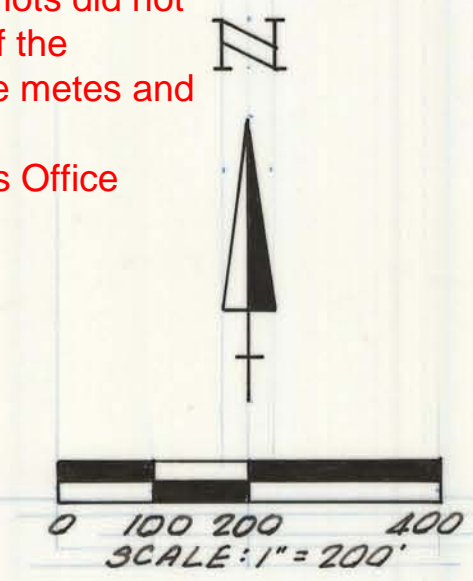
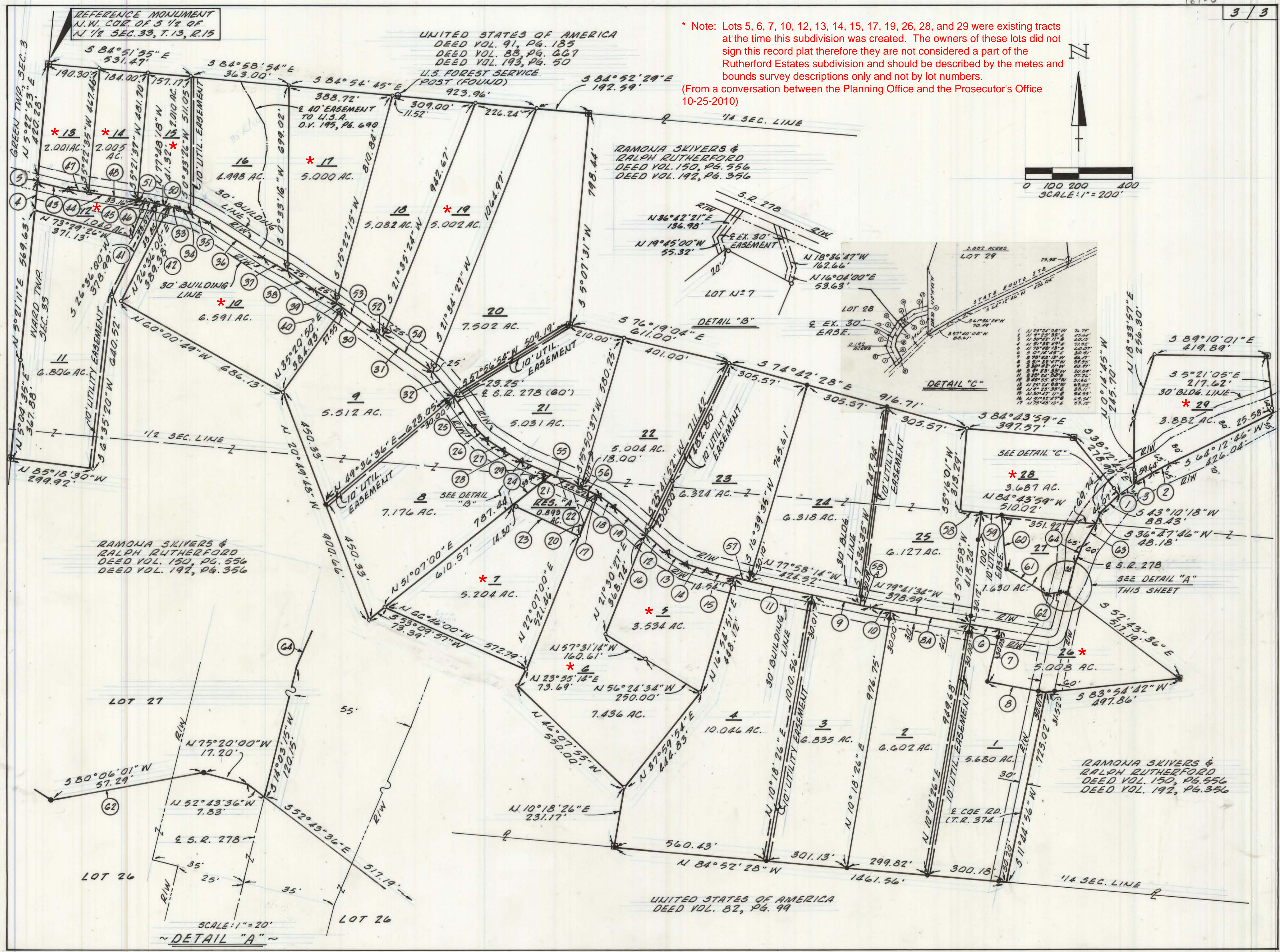


* Note: Lots 5, 6, 7, 10, 12, 13, 14, 15, 17, 19, 26, 28, and 29 were existing tracts at the time this subdivision was created. The owners of these lots did not sign this record plat therefore they are not considered a part of the Rutherford Estates subdivision and should be described by the metes and bounds survey descriptions only and not by lot numbers.
 (From a conversation between the Planning Office and the Prosecutor's Office 10-25-2010)



1	N 15° 01' 38" W	76.74'
2	N 4° 23' 38" E	55.44'
3	N 30° 41' 11" E	60.05'
4	N 78° 48' 13" E	31.92'
5	N 78° 48' 13" E	46.07'
6	N 80° 28' 41" W	64.97'
7	N 80° 28' 41" W	65.97'
8	N 89° 24' 58" W	30.54'
9	N 89° 24' 58" W	31.54'
10	N 89° 24' 58" W	32.54'
11	N 89° 24' 58" W	33.54'
12	N 89° 24' 58" W	34.54'
13	N 89° 24' 58" W	35.54'
14	N 89° 24' 58" W	36.54'
15	N 89° 24' 58" W	37.54'
16	N 89° 24' 58" W	38.54'
17	N 89° 24' 58" W	39.54'
18	N 89° 24' 58" W	40.54'
19	N 89° 24' 58" W	41.54'
20	N 89° 24' 58" W	42.54'
21	N 89° 24' 58" W	43.54'
22	N 89° 24' 58" W	44.54'
23	N 89° 24' 58" W	45.54'
24	N 89° 24' 58" W	46.54'
25	N 89° 24' 58" W	47.54'
26	N 89° 24' 58" W	48.54'
27	N 89° 24' 58" W	49.54'
28	N 89° 24' 58" W	50.54'
29	N 89° 24' 58" W	51.54'
30	N 89° 24' 58" W	52.54'
31	N 89° 24' 58" W	53.54'
32	N 89° 24' 58" W	54.54'
33	N 89° 24' 58" W	55.54'
34	N 89° 24' 58" W	56.54'
35	N 89° 24' 58" W	57.54'
36	N 89° 24' 58" W	58.54'
37	N 89° 24' 58" W	59.54'
38	N 89° 24' 58" W	60.54'
39	N 89° 24' 58" W	61.54'
40	N 89° 24' 58" W	62.54'
41	N 89° 24' 58" W	63.54'
42	N 89° 24' 58" W	64.54'
43	N 89° 24' 58" W	65.54'
44	N 89° 24' 58" W	66.54'
45	N 89° 24' 58" W	67.54'
46	N 89° 24' 58" W	68.54'
47	N 89° 24' 58" W	69.54'
48	N 89° 24' 58" W	70.54'
49	N 89° 24' 58" W	71.54'
50	N 89° 24' 58" W	72.54'
51	N 89° 24' 58" W	73.54'
52	N 89° 24' 58" W	74.54'
53	N 89° 24' 58" W	75.54'
54	N 89° 24' 58" W	76.54'
55	N 89° 24' 58" W	77.54'
56	N 89° 24' 58" W	78.54'
57	N 89° 24' 58" W	79.54'
58	N 89° 24' 58" W	80.54'
59	N 89° 24' 58" W	81.54'
60	N 89° 24' 58" W	82.54'
61	N 89° 24' 58" W	83.54'
62	N 89° 24' 58" W	84.54'