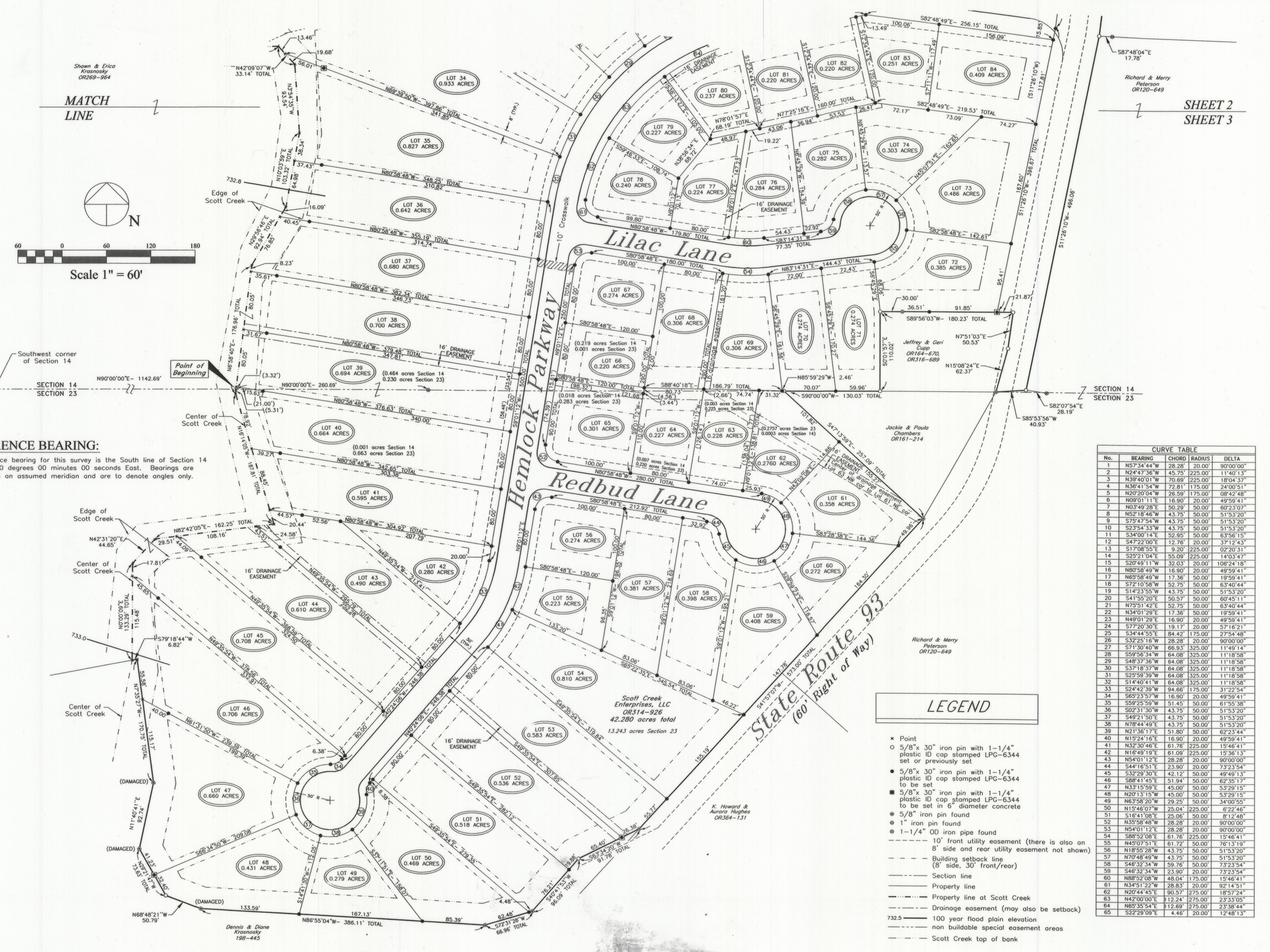


MATCH LINE

SHEET 2
SHEET 3

REFERENCE BEARING:
The reference bearing for this survey is the South line of Section 14 as North 90 degrees 00 minutes 00 seconds East. Bearings are based upon an assumed meridian and are to denote angles only.



No.	BEARING	CHORD	RADIUS	DELTA
1	N57°34'44\"	28.28'	20.00'	90°00'00\"
2	N24°47'36\"	45.75'	225.00'	11°40'13\"
3	N39°40'01\"	70.89'	225.00'	18°04'37\"
4	N36°41'54\"	72.81'	175.00'	24°00'51\"
5	N20°20'04\"	26.59'	175.00'	08°42'48\"
6	N09°01'11\"	16.90'	20.00'	49°59'41\"
7	N03°49'28\"	50.29'	50.00'	60°23'07\"
8	N52°18'46\"	43.75'	50.00'	51°53'20\"
9	S75°47'54\"	43.75'	50.00'	51°53'20\"
10	S23°54'33\"	43.75'	50.00'	51°53'20\"
11	S34°00'14\"	52.95'	50.00'	63°56'15\"
12	S47°22'00\"	12.76'	20.00'	37°12'43\"
13	S17°08'55\"	9.20'	225.00'	02°20'31\"
14	S25°21'04\"	55.09'	225.00'	14°03'47\"
15	S20°49'11\"	32.03'	20.00'	106°24'18\"
16	N80°58'49\"	16.90'	20.00'	49°59'41\"
17	N65°58'49\"	17.36'	50.00'	19°59'41\"
18	S72°10'58\"	52.75'	50.00'	63°40'44\"
19	S14°23'55\"	43.75'	50.00'	51°53'20\"
20	S41°55'20\"	50.57'	50.00'	60°45'11\"
21	N75°51'42\"	52.75'	50.00'	63°40'44\"
22	N34°01'29\"	17.36'	50.00'	19°59'41\"
23	N49°01'29\"	16.90'	20.00'	49°59'41\"
24	S77°20'30\"	19.17'	20.00'	57°16'21\"
25	S34°44'55\"	84.42'	175.00'	27°54'48\"
26	S32°25'16\"	28.28'	20.00'	90°00'00\"
27	S71°30'40\"	66.93'	325.00'	11°49'14\"
28	S59°56'34\"	64.08'	325.00'	11°18'58\"
29	S48°37'36\"	64.08'	325.00'	11°18'58\"
30	S37°18'37\"	64.08'	325.00'	11°18'58\"
31	S25°59'39\"	64.08'	325.00'	11°18'58\"
32	S14°40'41\"	64.08'	325.00'	11°18'58\"
33	S24°42'39\"	94.66'	175.00'	31°22'54\"
34	S65°23'57\"	16.90'	20.00'	49°59'41\"
35	S59°25'59\"	51.45'	50.00'	61°55'38\"
36	S02°31'30\"	43.75'	50.00'	51°53'20\"
37	S49°21'50\"	43.75'	50.00'	51°53'20\"
38	N78°44'49\"	43.75'	50.00'	51°53'20\"
39	N21°36'17\"	51.80'	50.00'	62°23'44\"
40	N15°24'16\"	16.90'	20.00'	49°59'41\"
41	N32°30'46\"	61.76'	225.00'	15°46'11\"
42	N16°49'19\"	61.09'	225.00'	15°36'13\"
43	N54°01'12\"	28.28'	20.00'	90°00'00\"
44	S44°16'51\"	23.90'	20.00'	73°23'54\"
45	S32°29'30\"	42.12'	50.00'	49°49'13\"
46	S88°41'45\"	51.94'	50.00'	62°35'17\"
47	N33°15'59\"	45.00'	50.00'	53°29'15\"
48	N20°13'15\"	45.00'	50.00'	53°29'15\"
49	N63°58'20\"	29.25'	50.00'	34°00'55\"
50	N15°46'07\"	25.04'	225.00'	6°22'46\"
51	S16°41'08\"	25.06'	50.00'	81°2'48\"
52	N35°58'48\"	28.28'	20.00'	90°00'00\"
53	N54°01'12\"	28.28'	20.00'	90°00'00\"
54	S88°52'08\"	61.76'	225.00'	15°46'41\"
55	N45°07'51\"	61.72'	50.00'	76°13'19\"
56	N18°55'28\"	43.75'	50.00'	51°53'20\"
57	N70°48'49\"	43.75'	50.00'	51°53'20\"
58	S48°32'34\"	59.76'	50.00'	73°23'54\"
59	S46°32'34\"	23.90'	20.00'	73°23'54\"
60	N88°52'08\"	48.04'	175.00'	15°46'41\"
61	N34°51'22\"	28.83'	20.00'	92°14'51\"
62	N20°44'45\"	90.57'	275.00'	18°57'24\"
63	N42°00'00\"	112.24'	275.00'	23°33'05\"
64	N65°35'54\"	112.69'	275.00'	23°38'44\"
65	S22°29'09\"	4.46'	20.00'	12°48'13\"

LEGEND

- Point
- 5/8" x 30" iron pin with 1-1/4" plastic ID cap stamped LPG-6344 set or previously set
- 5/8" x 30" iron pin with 1-1/4" plastic ID cap stamped LPG-6344 to be set
- 5/8" x 30" iron pin with 1-1/4" plastic ID cap stamped LPG-6344 to be set in 6" diameter concrete
- ⊙ 5/8" iron pin found
- ⊙ 1" iron pin found
- ⊙ 1-1/4" OD iron pipe found
- - - 10' front utility easement (there is also an 8' side and rear utility easement not shown)
- - - Building setback line (8' side, 30' front/rear)
- - - Section line
- - - Property line
- - - Property line at Scott Creek
- - - Drainage easement (may also be setback)
- - - 100 year flood plain elevation
- - - non buildable special easement areas
- - - Scott Creek top of bank

Larry P. Gerstner
Engineering & Surveying
9 East Second Street, Suite A, Logan, Ohio 43138
(740) 385-4260

SCOTT CREEK ESTATES
STATE ROUTE 93
LOGAN, OHIO
Plat of Survey - South

LARRY P. GERSTNER
S-6344
OH P.E. #39713

NO.	DATE	REVISIONS
06/20/05	08/28/06	
07/19/05		
04/10/06		
05/02/06		
08/01/06		

Scale: 1" = 60'

SHEET 3