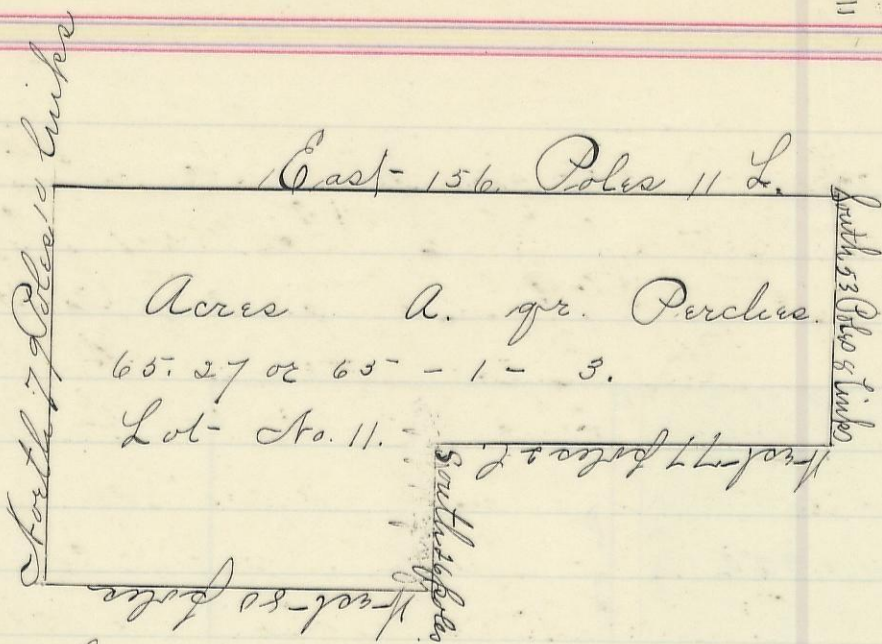


PERRY, No. 13, Range 19, Section No. 31, Sec. 21.

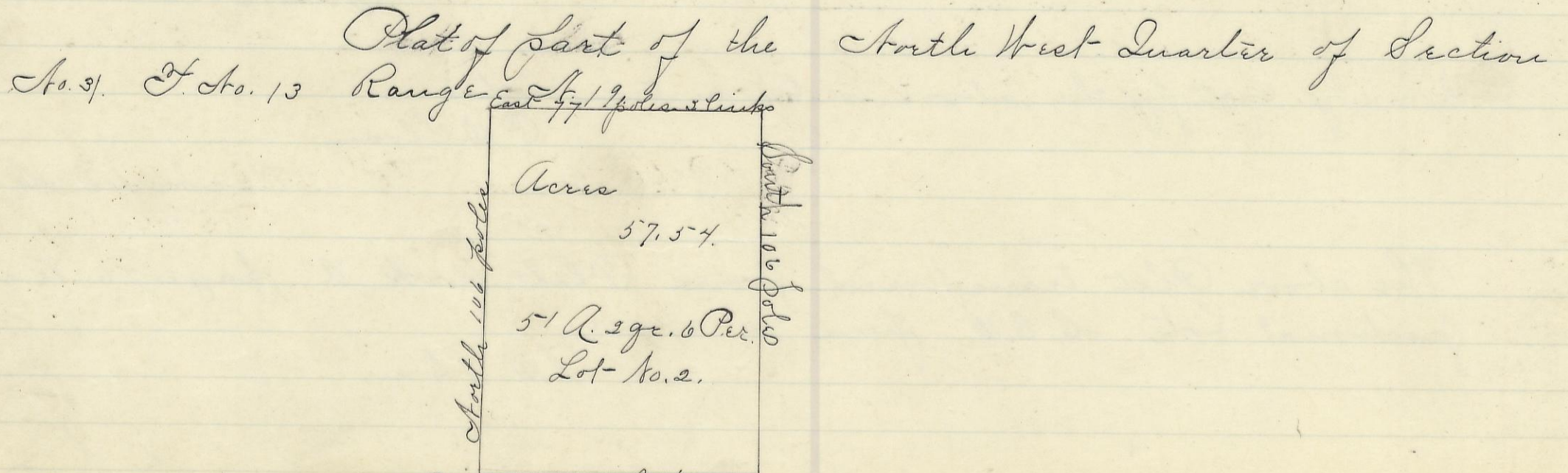


The Above Plat represents a part of the West-quarter of Section No. 31. T. No. 13 Range No. 19. Beginning at the N. West corner from which a Pin Oak 12 inches in diameter bears S. 76° E. 15 links distant Thence East- 156 Poles and 11 links to a stone from which a white oak 12 in in diameter bears N. 74° East- 28 links distant - & do. 11 inches bears N. 38° W. 33 links (Both original) Thence South 53 Poles and 8 links to a post from which a Pin Oak 6 in. in diameter bears S. 70° W. distant 53 links & a Poplar 20 in in diameter bears S. 25° W. distant 28 links; Thence West 77 Poles and 2 links to a stone from which a sugar tree 30 in. in diameter bears N. 13° E. distant 12 Poles 21 1/2 links Thence South 26 Poles to a post from which a gum 6 in in diameter bears S. 21° W. distant 4 Poles and 4 links and a Jack Oak 18 inches in diameter bears S. 35° E. distant 22 1/2 links Thence West- 80 poles to a post in the Range, Township and Section line from which a chestnut 12 in in diameter bears N. 8 1/2° E. distant 8 poles & 6 links and a sugar tree 18 in in diameter bears S. 59° E. 9 Poles 13 1/2 links thence North 79 Poles 10 links to the place of beginning containing 65 27/100 acres of land

Josiah Boyer }  
John Boyer } Chairman

Jan 30 1864.

A. Buzby Sur.



The Above Plat Represents part of the North West-quarter of