

TYPICAL STREET HALF SECTION
SCALE 1/2" = 1'-0"

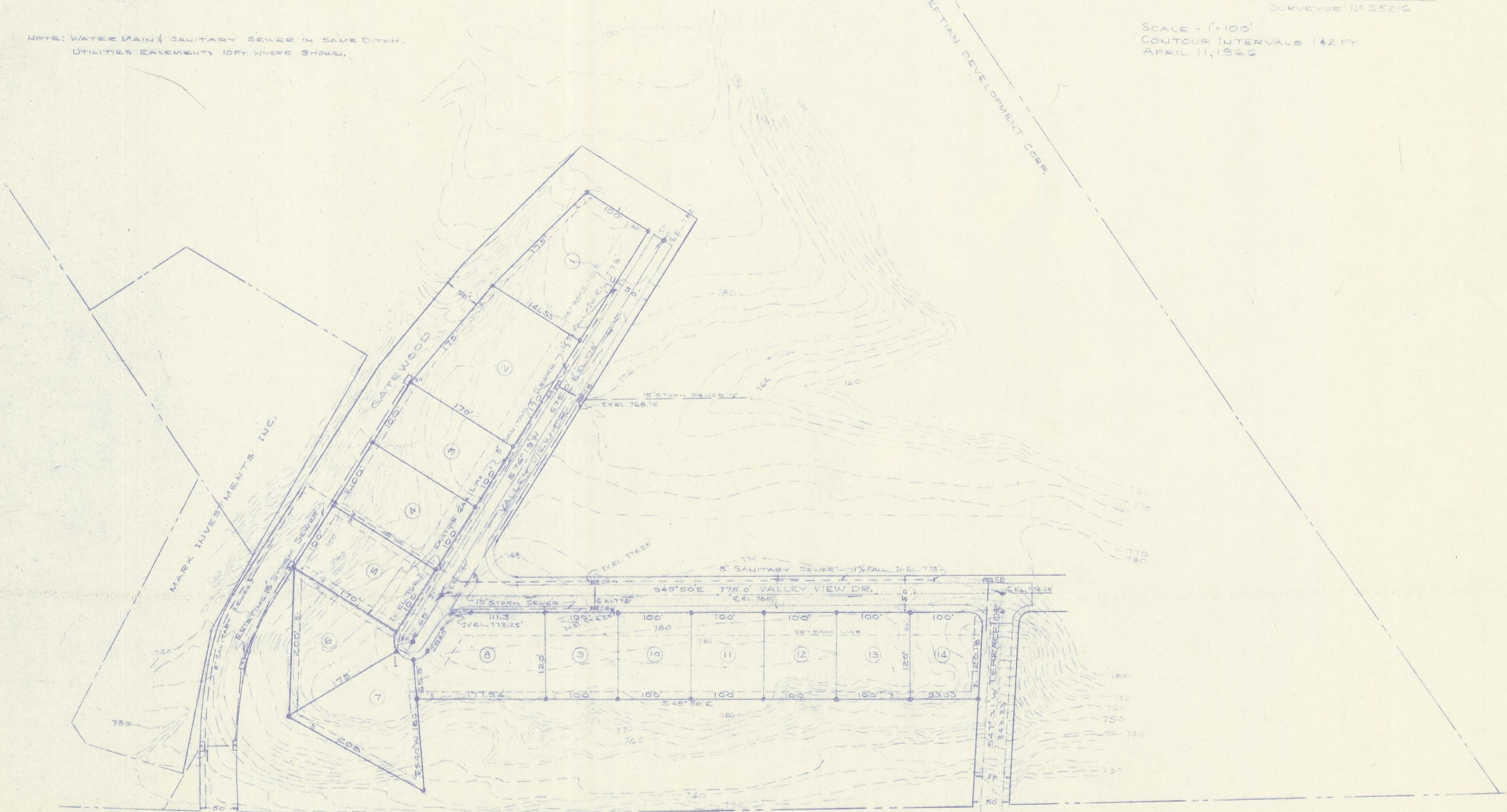
PRELIMINARY PLAT
OF
SECTION ONE
TERRACEVIEW HEIGHTS
CHIEFTIAN DEVELOPMENT CORP.
IN SECTION 34, GREEN TWP, HOCKING CO., OHIO

PREPARED BY: WILLIAM M. WATKINS
REGISTERED SURVEYOR
NEUBOURVILLE, OHIO

SURVEYOR NO. 35216

SCALE - 1" = 100'
CONTOUR INTERVALS 1/2 FT.
APRIL 11, 1966

NOTE: WATER MAIN & SANITARY SEWER IN SAME DITCH.
UTILITIES EASEMENTS 10 FT. WHERE SHOWN.



U.S. ROUTE 33

LOGAN CORPORATION LIMIT