



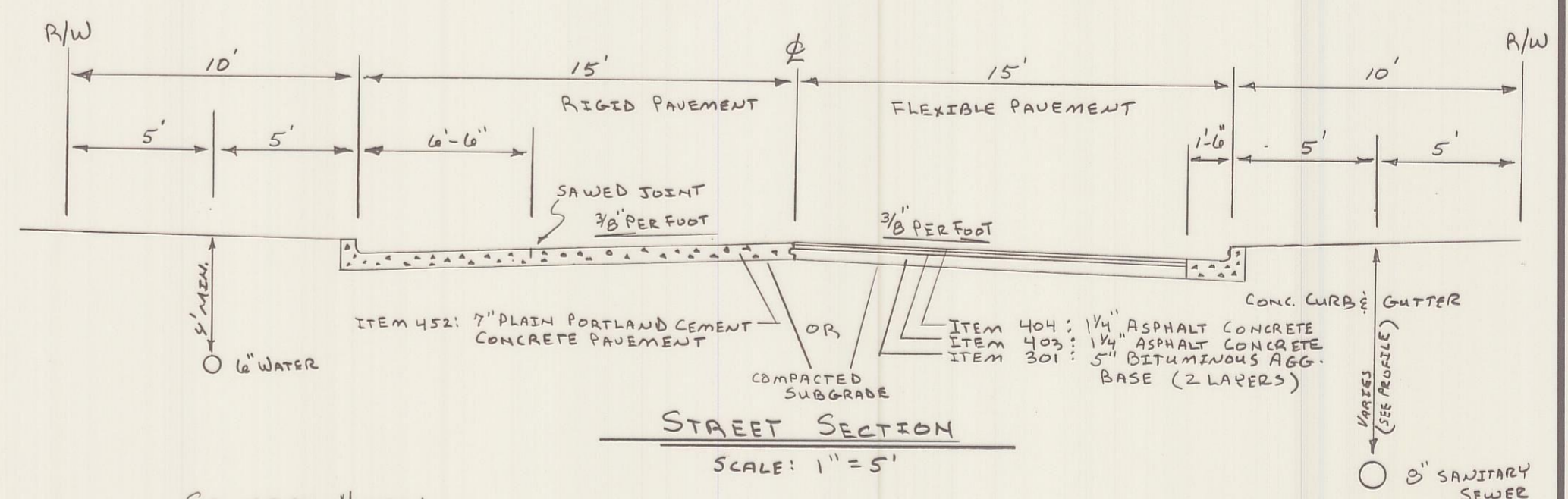
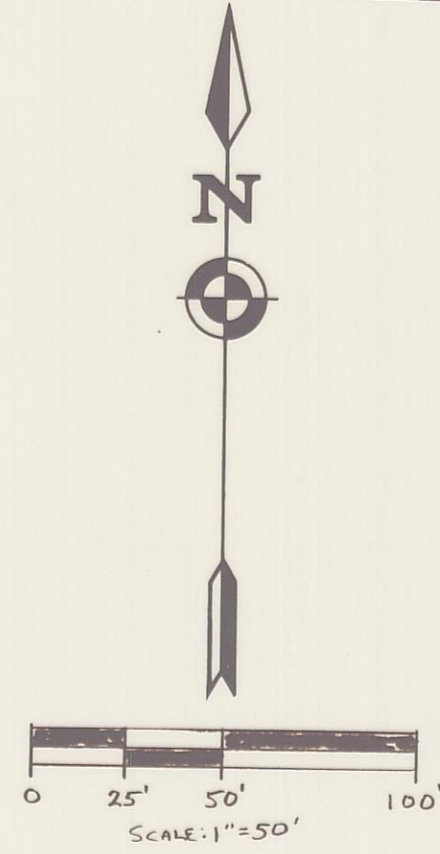
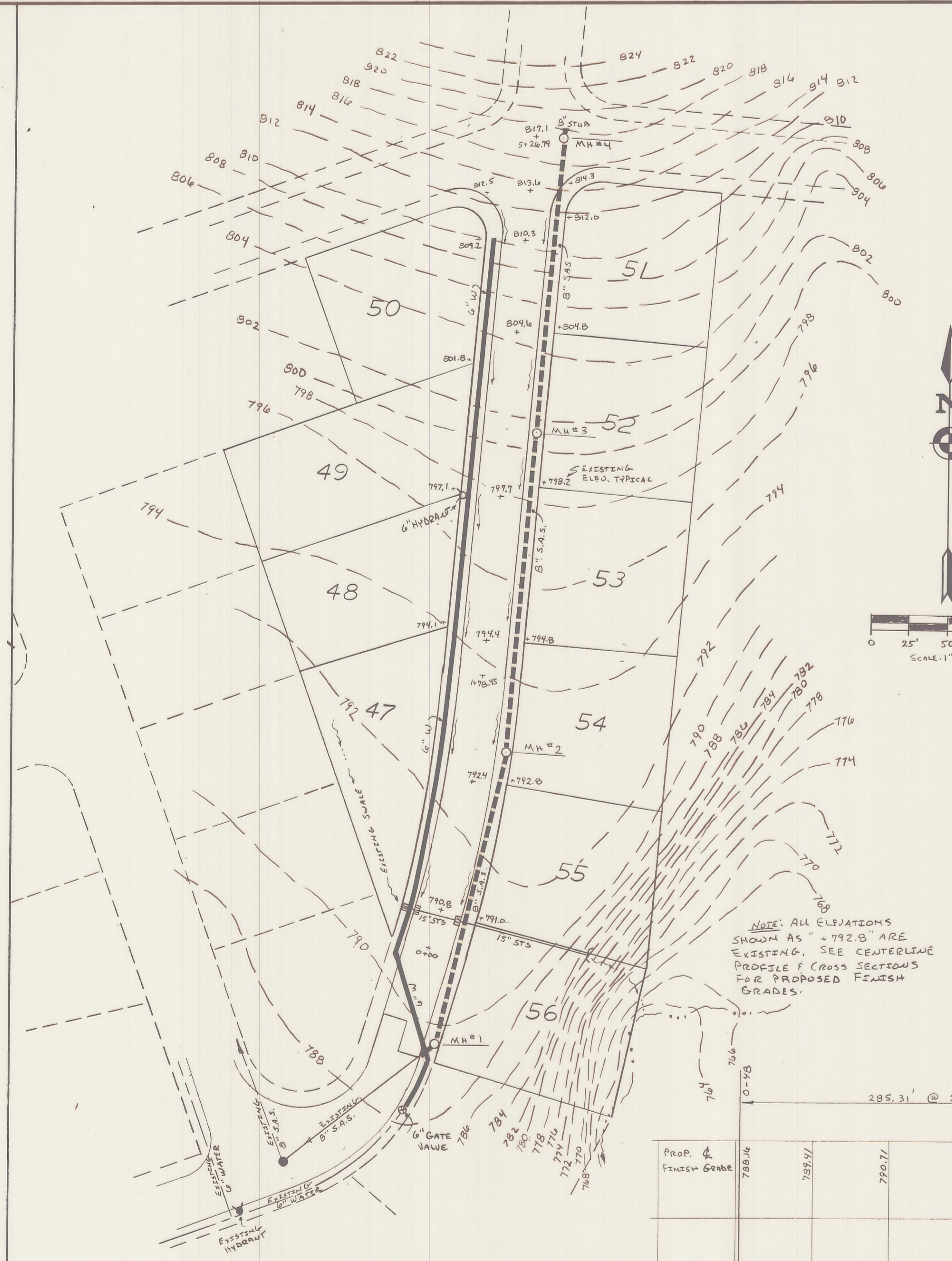
william r. shaw & assoc., inc.
 consulting engineers & surveyors
 (614) - 385 - 4349

63 west main Logan, Ohio 43138

**TERRACEVIEW HEIGHTS
 SECOND ADDITION**

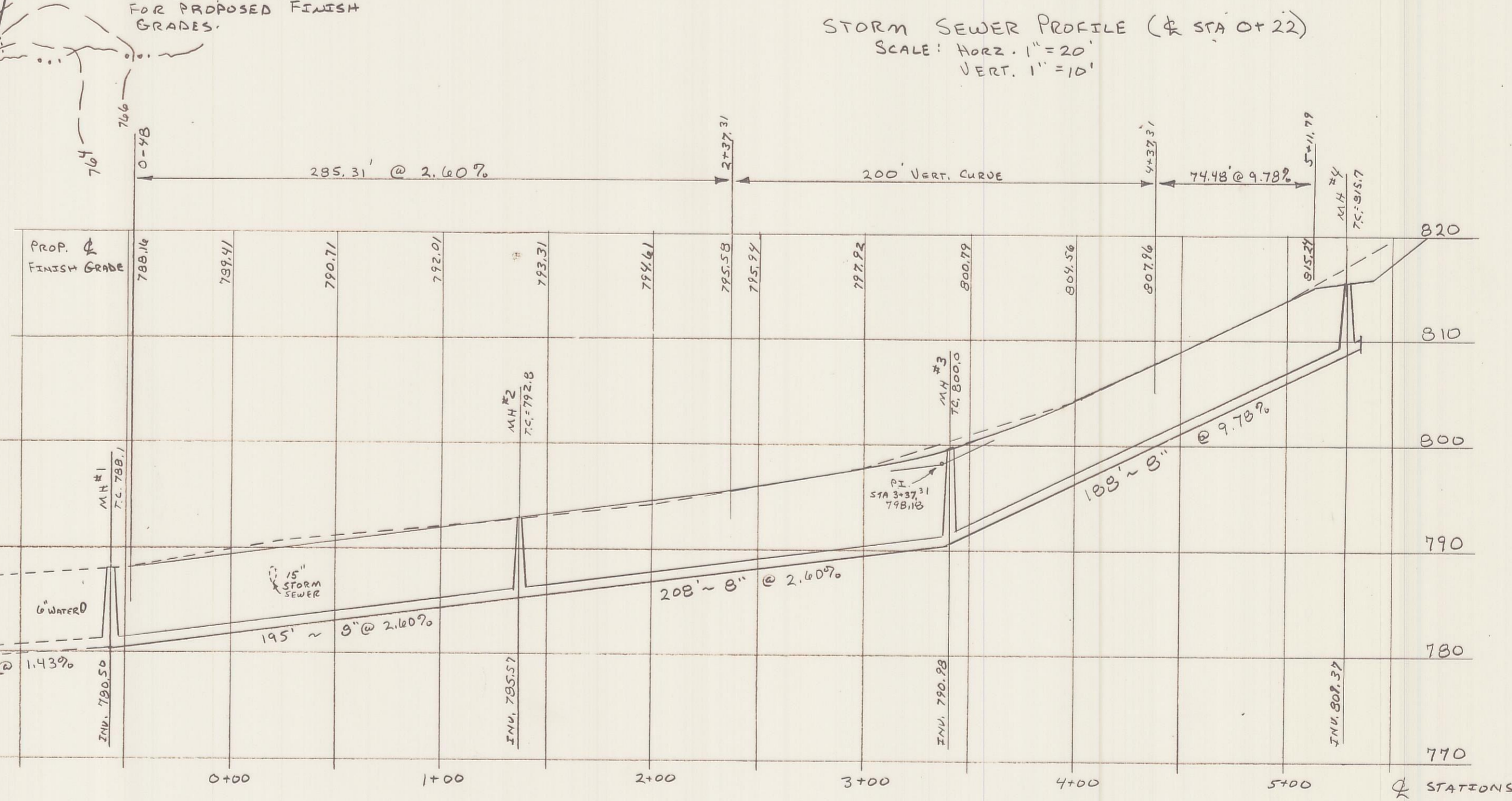
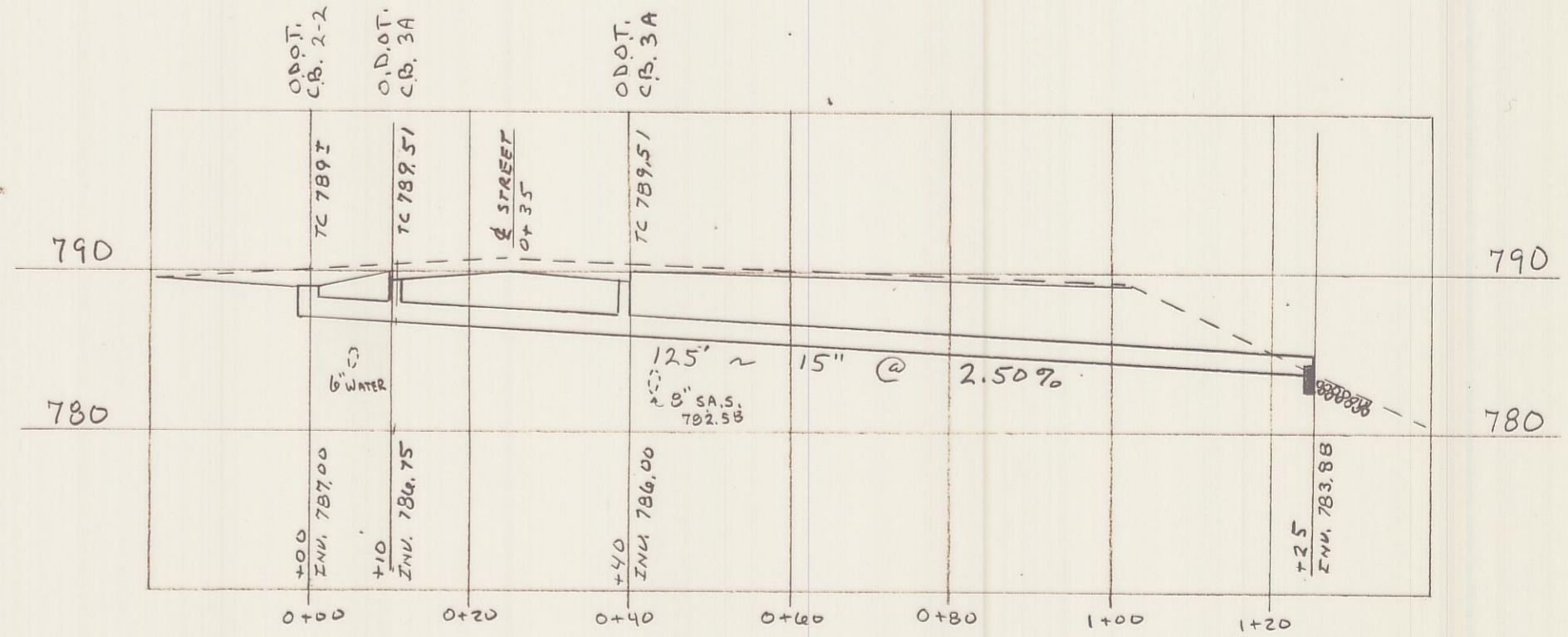
STREET AND UTILITIES

revisions	job
drawn	W.R.S.
date	10-5-87



GENERAL NOTES:

- 1) MATERIALS:
 SANITARY SEWER - VITRIFIED CLAY
 ASTM C-700 PIPE
 ASTM C-425 JOINTS
 ASTM C-478 MANHOLES
 WATER LINES - 6" PVC w/250 PSI RATING
 TO MEET CITY OF LOGAN SPECIFICATIONS
- 2) ROOF DRAINS, FOUNDATION DRAINS, AND OTHER CLEAN WATER CONNECTIONS TO THE SANITARY SEWER ARE PROHIBITED.
- 3) ALL MATERIALS SHALL CONFORM TO A.W.W.A.
- 4) MINIMUM OF 4' COVER ON ALL WATER LINES
- 5) PRESSURE TO BE TESTED AS PER A.W.W.A. C-600 OR C-603 UNDER DIRECTION OF A PROF. ENGINEER, NEW LINES SHALL BE DISINFECTED AS PER A.W.W.A. C-601.
- 6) CONTRACTOR SHALL MAINTAIN A VERTICAL SEPARATION OF 18" MIN. WHEN WATER LINES MUST CROSS THE SANITARY SEWER.



STREET CENTERLINE & SANITARY SEWER PROFILE
 SCALE: HORIZ. 1" = 50'
 VERT. 1" = 10'

NOT RECORDED

LEGEND:
 8" S.A.S. = 8" SANITARY SEWER & MANHOLE
 6" W.L. = 6" WATER LINE
 15" S.S. = 15" STORM SEWER & CATCH BASIN

PLANS PREPARED BY:
William R. Shaw
 OHIO PROFESSIONAL ENGINEER No. 43706