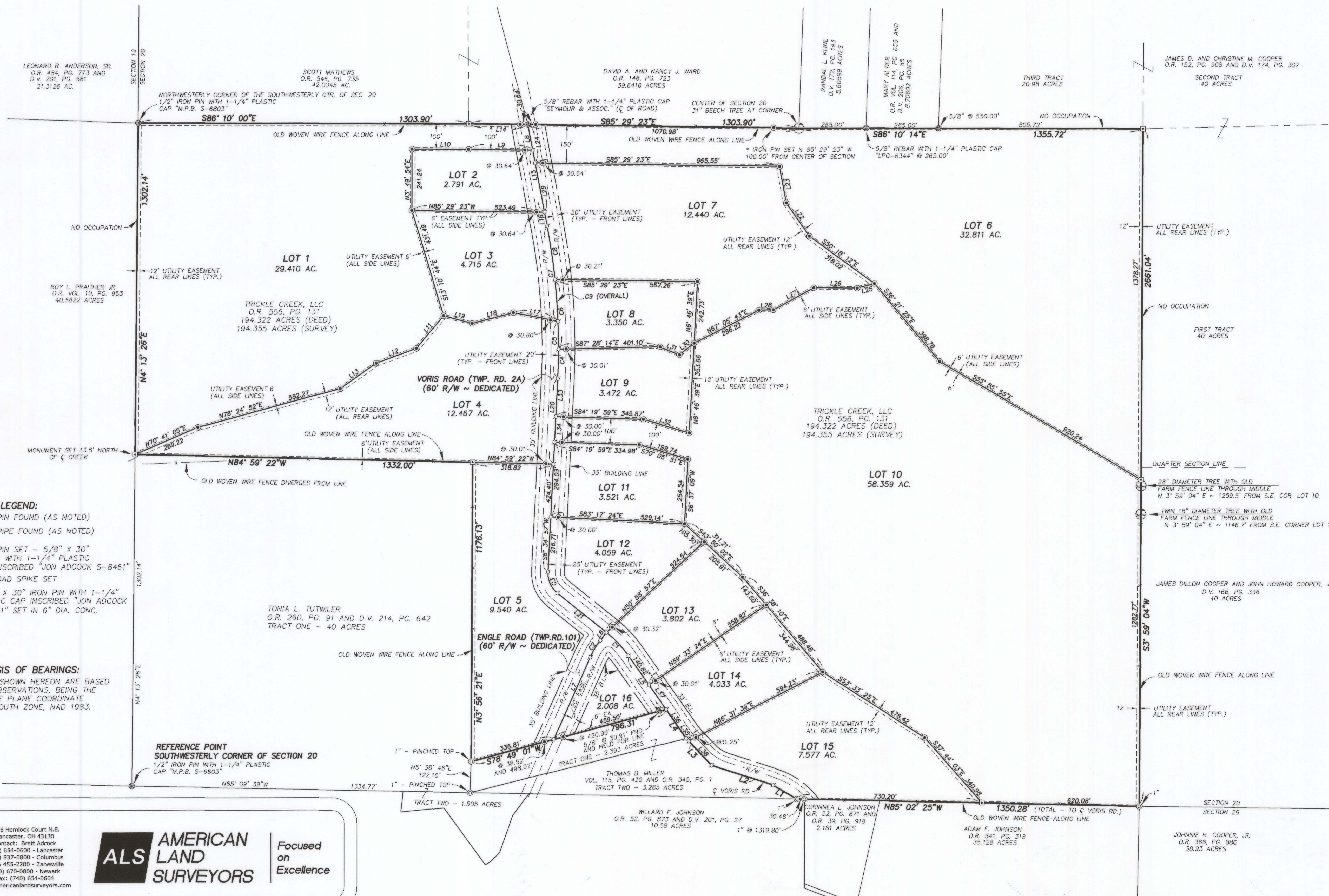
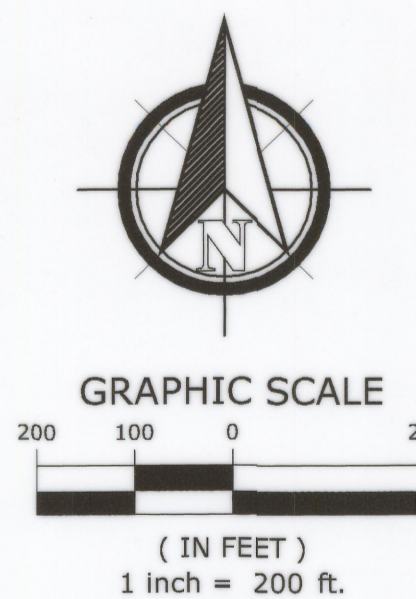


TRICKLE CREEK AT HOCKING HILLS

A LUXURY LOG CABIN DEVELOPMENT
BEING A SUBDIVISION OF 194.355 ACRES

SITUATED IN THE SOUTHERLY 1/2 OF SECTION 20, TOWNSHIP 15, RANGE 17, CONGRESS LANDS
MARION TOWNSHIP, HOCKING COUNTY, OHIO



Line #	Direction	Length
L1	N56° 26' 48"W	107.63'
L2	N68° 28' 28"W	255.35'
L3	N39° 45' 28"W	145.39'
L4	N31° 02' 26"W	139.26'
L5	N31° 37' 54"W	258.44'
L6	S42° 19' 29"W	39.77'
L7	S27° 39' 20"W	354.17'
L8	S7° 11' 36"E	102.12'
L9	N85° 29' 23"W	253.05'
L10	N86° 10' 00"W	222.80'
L11	S43° 23' 51"W	167.68'
L12	S73° 56' 08"W	168.87'
L13	S58° 17' 09"W	173.51'
L14	S85° 29' 23"E	232.92'
L15	S7° 11' 36"E	249.04'
L16	S7° 11' 36"E	54.97'
L17	N75° 34' 54"W	179.61'
L18	S79° 20' 22"W	167.57'
L19	N71° 13' 50"W	116.85'
L20	N6° 34' 57"E	336.96'
L21	S47° 40' 31"E	248.52'
L22	N31° 01' 37"W	159.55'
L23	S6° 45' 34"E	146.33'
L24	S7° 11' 36"E	153.18'
L25	S79° 21' 58"W	70.17'
L26	N85° 41' 35"W	171.48'
L27	S65° 02' 16"W	182.71'
L28	N87° 46' 01"W	56.36'
L29	N7° 11' 36"W	252.94'
L30	S55° 48' 49"W	73.94'
L31	N64° 27' 06"W	81.85'
L32	N70° 05' 51"W	188.91'
L33	N6° 34' 57"E	150.60'
L34	N6° 34' 57"E	100.01'
L35	N39° 45' 28"W	14.19'
L36	N31° 02' 26"W	139.26'
L37	N31° 37' 54"W	117.62'
L38	N39° 45' 28"W	131.20'

Curve #	Radius	Delta	Length	Chord Direction	Chord Length
C1	450.00'	16° 02' 37"	126.01'	N39° 39' 13"W	125.60'
C2	300.00'	14° 40' 08"	76.81'	S34° 59' 24"W	76.60'
C3	100.00'	54° 15' 28"	94.70'	N20° 32' 47"W	91.20'
C4	2500.00'	2° 38' 13"	115.06'	N5° 15' 50"E	115.05'
C5	2500.00'	5° 08' 44"	224.51'	N4° 00' 35"E	224.44'
C6	2500.00'	6° 16' 43"	273.96'	N0° 48' 22"E	273.82'
C7	2500.00'	8° 37' 49"	376.57'	N2° 52' 41"W	376.22'
C8	2500.00'	4° 51' 37"	212.06'	N4° 45' 48"W	212.00'
C9	2500.00'	13° 46' 33"	601.99'	N0° 18' 20"W	599.64'

- LEGEND:**
- IRON PIN FOUND (AS NOTED)
 - IRON PIPE FOUND (AS NOTED)
 - ⊙ IRON PIN SET - 5/8" X 30" REBAR WITH 1-1/4" PLASTIC CAP INSCRIBED "JON ADCOCK S-8461"
 - ⊕ RAILROAD SPIKE SET
 - ⊠ 5/8" X 30" IRON PIN WITH 1-1/4" PLASTIC CAP INSCRIBED "JON ADCOCK S-8461" SET IN 6" DIA. CONC.

BASIS OF BEARINGS:
BEARINGS SHOWN HEREON ARE BASED ON GPS OBSERVATIONS, BEING THE OHIO STATE PLANE COORDINATE SYSTEM, SOUTH ZONE, NAD 1983.

REFERENCE POINT
SOUTHWESTERLY CORNER OF SECTION 20
1/2" IRON PIN WITH 1-1/4" PLASTIC CAP "M.P.B. S-6803"

1346 Hemlock Court N.E.
Lancaster, OH 43130
Contact: Brett Adcock
(740) 654-0600 - Lancaster
(614) 837-0800 - Columbus
(740) 455-2200 - Zanesville
(740) 670-0800 - Newark
Fax: (740) 654-0604
www.americanlandsurveyors.com

ALS AMERICAN LAND SURVEYORS

Focused on Excellence

FIELD	DRAFT	CHECK
JBA	JBA	JBA
JOB NO.:		
DATE: AUGUST 5, 2015		
SCALE: 1"=200'		

2/2