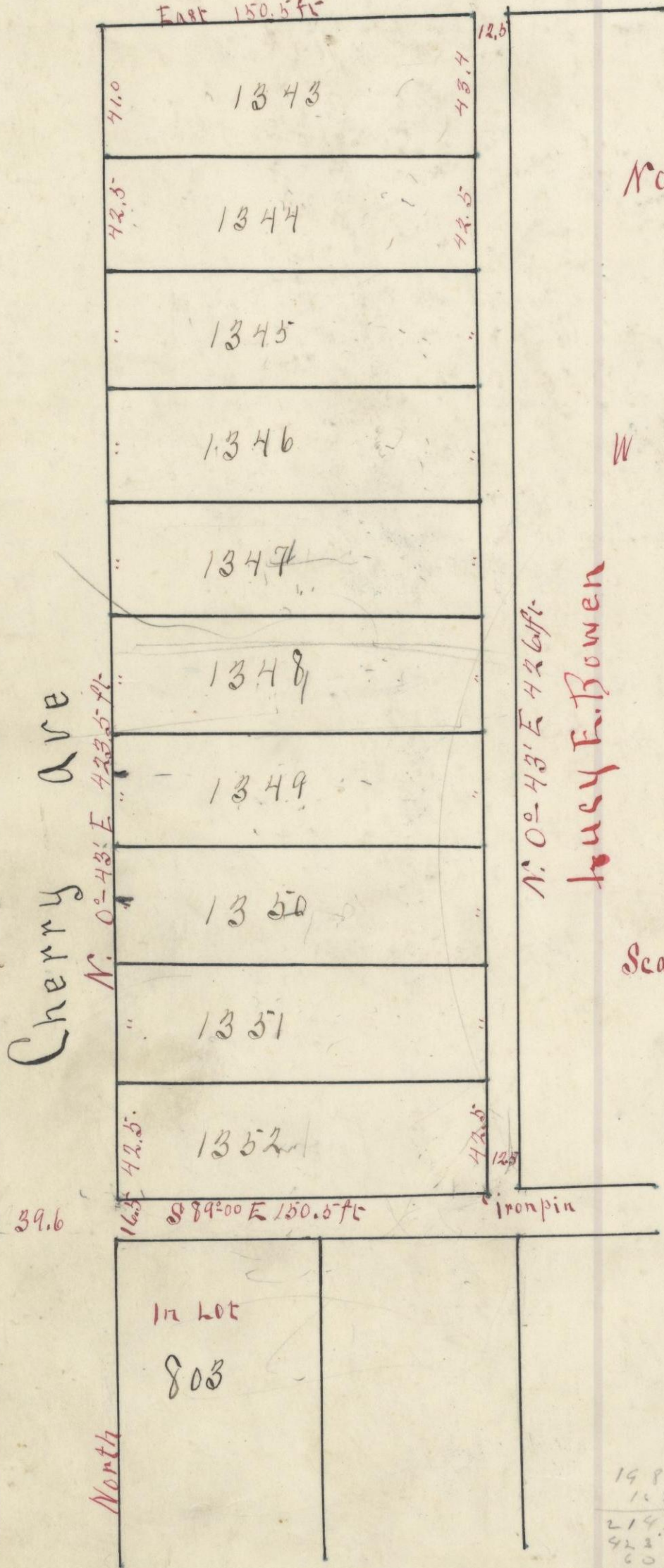


Plat of Tho's Shotwells Addition to Logan

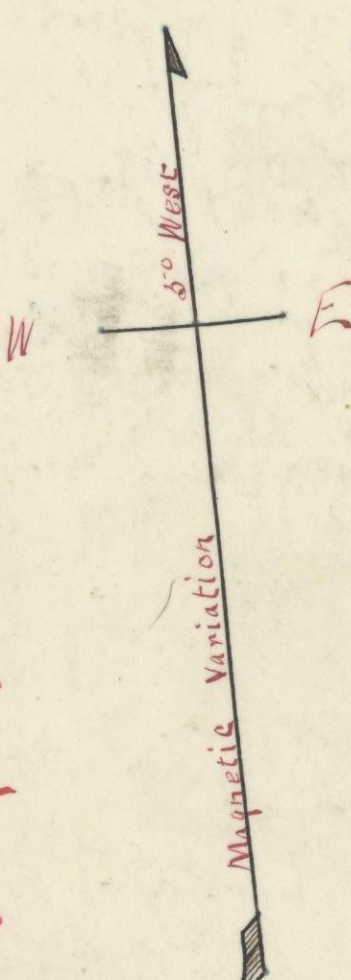
Oak Grove Cemetery

Cemetery St.

East 150.5 ft



North



Scale 50 ft to an inch

Plat of THO'S SHOTWELL'S ADDITION To LOGAN, Ohio August 5th 1909

I certify the attached is a correct plat of a subdivision of a part of Fraction Lot No. 9, Section No. 11, Township No. 14, Range No. 17 of Stocking County, Ohio as caused to be laid out by Thomas Shotwell as an addition to the Village of Logan, Ohio. All distances are given in feet units and the bearings are as marked on the plat.

Description:- Beginning at a stake in the East line of Cherry Avenue 16.5 ft. North of the North-west corner of in lot number 803; thence, with said line of Cherry Avenue, N. 0°-43' E. 423.5 ft. to a point in the South line of Cemetery Street, (formerly known as Cemetery Street); thence, with the South line of said Street, East 150.5 ft. to the East line of said Fraction Lot number 9; thence, with said lot line, S. 0°-43' W. 426.1 ft. to an iron pin in the North line of an alley; thence, with said alley line, N. 89°-00' W. 150.5 ft. to the place of beginning, containing 1¹⁷/₁₀₀ Acre.

H. H. Gaffney, Surveyor.