

PROFESSIONAL LAND SURVEYORS

SEYMOUR & ASSOCIATES

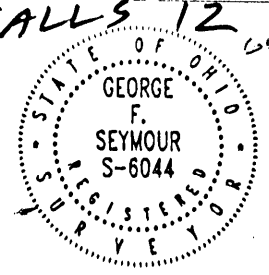
P.O. Box 624
830 W. Hunter St. (740) 385-4349
Logan, Ohio 43138

PLAT OF SURVEY

FALLS 12

Situated in Falls Township, Hocking County, Ohio;
Being a part of Fractional Lot 23 of Section 12,
T-14-N, R-17-W.

52.479 Ac



DATE:
8-09-00

DRAWN BY:
RAC

JOB #:
F12001

FOR: Seajay Development Ltd.

BASIS OF BEARINGS:

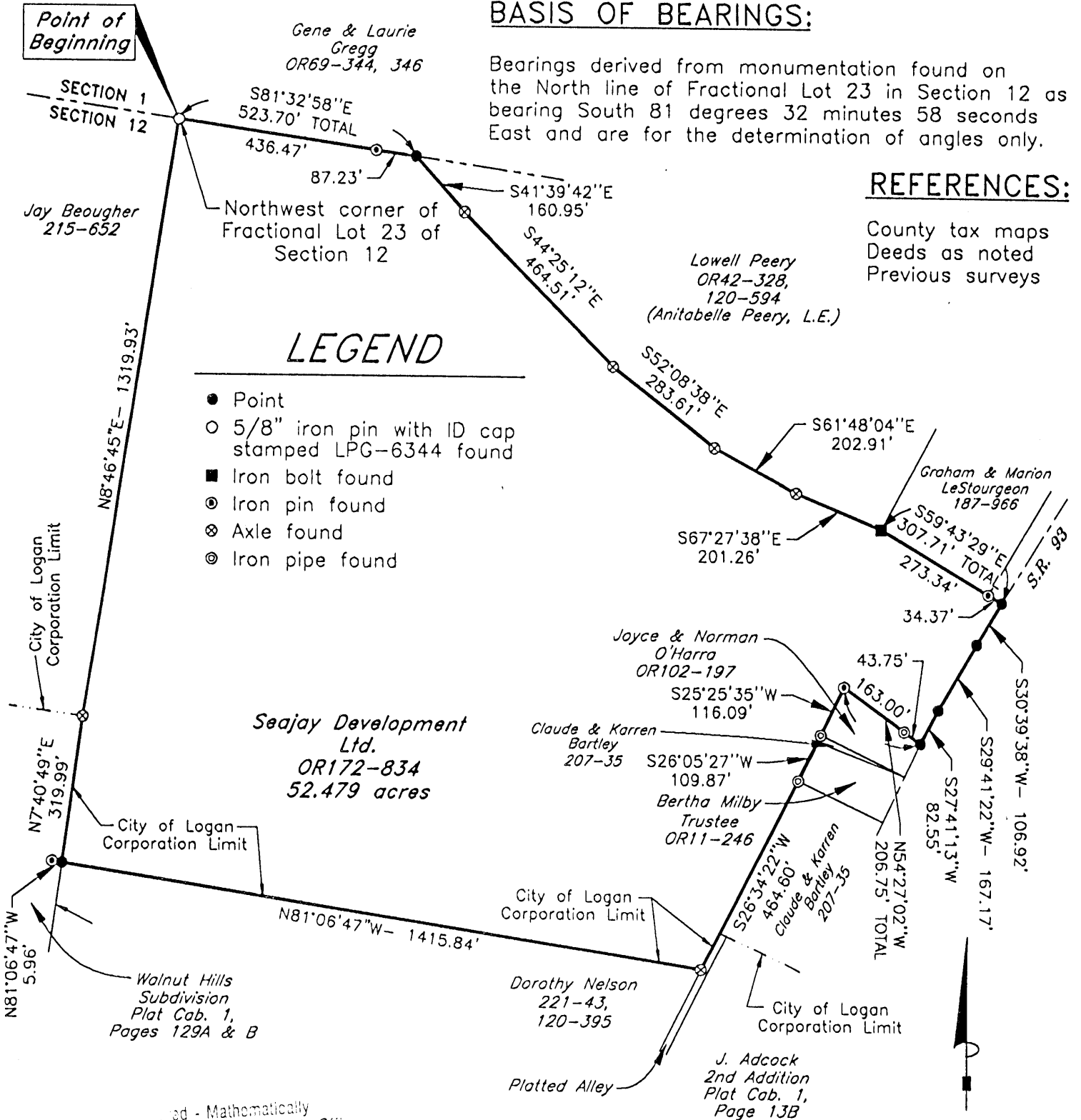
Bearings derived from monumentation found on the North line of Fractional Lot 23 in Section 12 as bearing South 81 degrees 32 minutes 58 seconds East and are for the determination of angles only.

REFERENCES:

County tax maps
Deeds as noted
Previous surveys

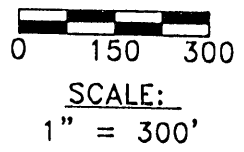
LEGEND

- Point
- 5/8" iron pin with ID cap stamped LPG-6344 found
- Iron bolt found
- ⊙ Iron pin found
- ⊗ Axle found
- ⊙ Iron pipe found



Checked - Mathematically
Logan County Engineer's Office

MAW 1-11-01



I HEREBY CERTIFY THAT THIS PLAT WAS PREPARED FROM AN ACTUAL FIELD SURVEY OF THE PREMISES IN NOVEMBER OF 1994 AND FROM EXISTING PUBLIC RECORDS AND THAT SAID PLAT CORRECTLY SHOWS THE LIMITS OF THE PARCEL TO BE CONVEYED.

THIS CERTIFICATION WAS MADE BY ME ON THIS 9 DAY OF AUGUST, 2000.

George F. Seymour
GEORGE F. SEYMOUR
OHIO PROFESSIONAL SURVEYOR NO. 6044

EXHIBIT "A"

Being all of the tract of land that is now or formerly in the name of Seajay Development Ltd., as recorded in Official Record 172 at page 834, Hocking County Recorder's Office, said tract being a part of Fractional Lot 23 in Section 12, T14N, R17W, Falls Township, Hocking County, State of Ohio, and being more particularly described as follows:

Beginning at an iron pin with a plastic identification cap stamped "L.P.G.- 6344" found on what is taken to be the Northwest corner of Fractional Lot 23 of Section 12, T14N, R17W, and the grantor's Northwest corner;

Thence along the grantor's North line, and the North line of Section 12, South 81 degrees 32 minutes 58 seconds East, passing through an iron pin found at 436.47 feet, going a total distance of 523.70 feet to a point being the Northwest corner of a tract as recorded in Official Record 42 at page 328, and Deed Book 120 at page 594;

Thence leaving the North line of Section 12, and continuing along the grantor's North line, and the South line of the tract as recorded in Official Record 42 at page 328, the following five courses:

1. South 41 degrees 39 minutes 42 seconds East a distance of 160.95 feet to an axle found;
2. South 44 degrees 25 minutes 12 seconds East a distance of 464.51 feet to an axle found;
3. South 52 degrees 08 minutes 38 seconds East a distance of 283.61 feet to an axle found;
4. South 61 degrees 48 minutes 04 seconds East a distance of 202.91 feet to an axle found, and;
5. South 67 degrees 27 minutes 38 seconds East a distance of 201.26 feet to an iron bolt found on the Southwest corner of the tract as recorded in Deed Book 187 at page 966;

Thence continuing along the grantor's North line, and the South line of the tract as recorded in Deed Book 187 at page 966, South 59 degrees 43 minutes 29 seconds East, passing through an iron pin found at 273.34 feet, going a total distance of 307.71 feet to a point in the center of State Route 93 and the grantor's Northeast corner;

Thence along the center of State Route 93, the following three courses:

1. South 30 degrees 39 minutes 38 seconds West a distance of 106.92 feet to a point;
2. South 29 degrees 41 minutes 22 seconds West a distance of 167.17 feet to a point, and;
3. South 27 degrees 41 minutes 13 seconds West a distance of 82.55 feet to a point being the Northeast corner of the tract as recorded in Official Record 102 at page 197;

Thence leaving the center of State Route 93, and along the North line of the tract as recorded in Official Record 102 at page 197, North 54 degrees 27 minutes 02 seconds West, passing through an iron pipe found at 43.75 feet, going a total distance of 206.75 feet to an iron pin found on the Northwest corner of the tract as recorded in Official Record 102 at page 197;

Thence along the West line of the tract as recorded in Official Record 102 at page 197, South 25 degrees 25 minutes 35 seconds West a distance of 116.09 feet to an iron pipe found;

Thence continuing along the grantor's east line, South 26 degrees 05 minutes 27 seconds West a distance of 109.87 feet to an iron pipe found on the Southwest corner of the tract as recorded in Official Record 11 at page 246;

Thence continuing along the grantor's east line, South 26 degrees 34 minutes 22 seconds West a distance of 464.60 feet to an axle found on the grantor's Southeast corner, and the existing corporation line of The City of Logan;



EXHIBIT "A"

Thence along the grantor's south line, and the corporation line of The City of Logan, North 81 degrees 06 minutes 47 seconds West a distance of 1,415.84 feet to a point from which an iron pin found bears, North 81 degrees 06 minutes 47 seconds West a distance of 5.96 feet;

Thence along the grantor's West line, and the corporation line of The City of Logan, North 07 degrees 40 minutes 49 seconds East a distance of 319.99 feet to an axle found;

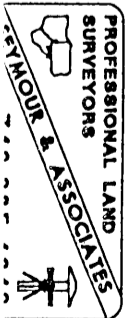
Thence leaving the corporation line of The City of Logan, and continuing along the grantor's West line, North 08 degrees 46 minutes 45 seconds East a distance of 1,319.93 feet to the point of beginning containing 52.479 acres, more or less, and subject to the right-of-way of State Route 93 and all easements of record.

The bearings used in the above described tract were based on monumentation found on the North line of Section 12 as bearing South 81 degrees 32 minutes 58 seconds East and are for the determination of angles only.

The above described tract was surveyed by George F. Seymour, Ohio Professional Surveyor No. 6044, in November of 1994.

Approved - Mathematically
Licking County Engineer's Office

G.F.S. DATE 01-99-01



PROFESSIONAL LAND SURVEYORS



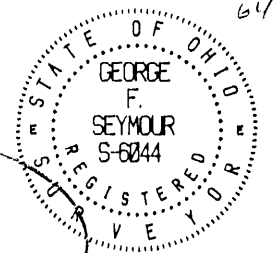
SEYMOUR & ASSOCIATES



P.O. Box 624
830 W. Hunter St.
Logan, Ohio 43138
(740) 385-4349

ANNEXATION PLAT

Situated in Falls Township, Hocking County, Ohio;
Being a part of Fractional Lot 23 of Section 12,
T-14-N, R-17-W.



52.194 Ac.
Proposed
Annexation
Approved 9-11-01

DATE:
8-09-00 - REV: 01.22.01 • 12.01

DRAWN BY:
RAC & GB

JOB #:
F2001 (Coord. File:40942L)

FOR: Sea Jay Development Ltd.

BASIS OF BEARINGS:

Bearings derived from monumentation found on the North line of Fractional Lot 23 in Section 12 as bearing South 81 degrees 32 minutes 58 seconds East and are for the determination of angles only.

REFERENCES:

County tax maps
Deeds as noted
Previous surveys

Point of Beginning

Gene & Louris
Gregg
OR69-344, 346

S81°32'58"E
523.70' TOTAL
436.47'

Northwest corner of
Fractional Lot 23 of
Section 12

Jay Beougher
215-652

LEGEND

- Point
- 5/8" iron pin with ID cap stamped LPG-6344 found
- Iron bolt found
- ⊙ Iron pin found
- ⊗ Axle found
- ⊙ Iron pipe found

ANNEXATION AREA =
52.194 Acres

Sea Jay Development
Ltd.

OR172-834

Total Area = 52.479 acres
(Area to be left in Falls Twp.
in S.R.93 R/W = 0.285 Acre)

City of Logan
Corporation Limit

N8°46'45"E - 1319.93'

N7°40'49"E
319.99'

City of Logan
Corporation Limit

Walnut Hills
Subdivision
Plat Cab. 1,
Pages 129A & B

N81°06'47"W
5.96'

N81°06'47"W - 1415.84'

City of Logan
Corporation Limit

Dorothy Nelson
221-43,
120-395

Platted Alley

J. Adcock
2nd Addition
Plat Cab. 1,
Page 13B

Claude & Korren
Bartley
207-35

S26°05'27"W
109.87'

Bertha Milby
Trustee
OR11-246

S26°34'22"W
464.60'

City of Logan
Corporation Limit

City of Logan
Corporation Limit

City of Logan
Corporation Limit

City of Logan
Corporation Limit

City of Logan
Corporation Limit

City of Logan
Corporation Limit

City of Logan
Corporation Limit

City of Logan
Corporation Limit

City of Logan
Corporation Limit

City of Logan
Corporation Limit

City of Logan
Corporation Limit

City of Logan
Corporation Limit

City of Logan
Corporation Limit

City of Logan
Corporation Limit

City of Logan
Corporation Limit

City of Logan
Corporation Limit

City of Logan
Corporation Limit

City of Logan
Corporation Limit

City of Logan
Corporation Limit

City of Logan
Corporation Limit

City of Logan
Corporation Limit

City of Logan
Corporation Limit

City of Logan
Corporation Limit

City of Logan
Corporation Limit

City of Logan
Corporation Limit

S67°27'38"E
201.26'

S61°48'04"E
202.91'

S52°08'38"E
283.61'

S59°43'29"E
307.71' TOTAL

S67°27'38"E
201.26'

S61°48'04"E
202.91'

S52°08'38"E
283.61'

S59°43'29"E
307.71' TOTAL

S67°27'38"E
201.26'

S61°48'04"E
202.91'

S52°08'38"E
283.61'

S59°43'29"E
307.71' TOTAL

S67°27'38"E
201.26'

S61°48'04"E
202.91'

S52°08'38"E
283.61'

S59°43'29"E
307.71' TOTAL

S67°27'38"E
201.26'

S61°48'04"E
202.91'

S52°08'38"E
283.61'

S59°43'29"E
307.71' TOTAL

S67°27'38"E
201.26'

S61°48'04"E
202.91'

S52°08'38"E
283.61'

S59°43'29"E
307.71' TOTAL

S67°27'38"E
201.26'

S61°48'04"E
202.91'

S52°08'38"E
283.61'

S59°43'29"E
307.71' TOTAL

S67°27'38"E
201.26'

S61°48'04"E
202.91'

S52°08'38"E
283.61'

Graham & Marion
LaStourgeon
187-966

S59°43'29"E
307.71' TOTAL

S67°27'38"E
201.26'

S61°48'04"E
202.91'

S52°08'38"E
283.61'

S59°43'29"E
307.71' TOTAL

S67°27'38"E
201.26'

S61°48'04"E
202.91'

S52°08'38"E
283.61'

S59°43'29"E
307.71' TOTAL

S67°27'38"E
201.26'

S61°48'04"E
202.91'

S52°08'38"E
283.61'

S59°43'29"E
307.71' TOTAL

S67°27'38"E
201.26'

S61°48'04"E
202.91'

S52°08'38"E
283.61'

S59°43'29"E
307.71' TOTAL

S67°27'38"E
201.26'

S61°48'04"E
202.91'

S52°08'38"E
283.61'

S59°43'29"E
307.71' TOTAL

S67°27'38"E
201.26'

S61°48'04"E
202.91'

Checked - Mathematically
Hocking County Engineer's Office

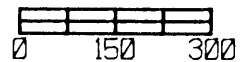
DATE 1-23-01

I HEREBY CERTIFY THAT THIS PLAT WAS PREPARED FROM AN ACTUAL FIELD SURVEY OF THE PREMISES IN NOVEMBER OF 1994 AND FROM EXISTING PUBLIC RECORDS AND THAT SAID PLAT CORRECTLY SHOWS THE LIMITS OF THE PARCEL TO BE CONVEYED.

THIS CERTIFICATION WAS MADE BY ME ON THIS 22 DAY OF JANUARY, 2001.

George F. Seymour

GEORGE F. SEYMOUR
OHIO PROFESSIONAL SURVEYOR NO. 6044



SCALE:
1" = 300'

EXHIBIT "A"

Being all of the tract of land that is now or formerly in the name of Seajay Development Ltd., as recorded in Official Record 172 at page 834, Hocking County Recorder's Office, said tract being a part of Fractional Lot 23 in Section 12, T14N, R17W, Falls Township, Hocking County, State of Ohio, and being more particularly described as follows:

Beginning at an iron pin with a plastic identification cap stamped "L.P.G.- 6344" found on what is taken to be the Northwest corner of Fractional Lot 23 of Section 12, T14N, R17W, and the grantor's Northwest corner;

Thence along the grantor's North line, and the North line of Section 12, South 81 degrees 32 minutes 58 seconds East, passing through an iron pin found at 436.47 feet, going a total distance of 523.70 feet to a point being the Northwest corner of a tract as recorded in Official Record 42 at page 328, and Deed Book 120 at page 594;

Thence leaving the North line of Section 12, and continuing along the grantor's North line, and the South line of the tract as recorded in Official Record 42 at page 328, the following five courses:

1. South 41 degrees 39 minutes 42 seconds East a distance of 160.95 feet to an axle found;
2. South 44 degrees 25 minutes 12 seconds East a distance of 464.51 feet to an axle found;
3. South 52 degrees 08 minutes 38 seconds East a distance of 283.61 feet to an axle found;
4. South 61 degrees 48 minutes 04 seconds East a distance of 202.91 feet to an axle found, and;
5. South 67 degrees 27 minutes 38 seconds East a distance of 201.26 feet to an iron bolt found on the Southwest corner of the tract as recorded in Deed Book 187 at page 966;

Thence continuing along the grantor's North line, and the South line of the tract as recorded in Deed Book 187 at page 966, South 59 degrees 43 minutes 29 seconds East a distance of 272.71 feet to a point on the right-of-way line of State Route 93 from which an iron pin found bears, South 59 degrees 43 minutes 29 seconds East a distance of 0.63 feet;

Thence along the right-of-way line of State Route 93, the following three courses:

1. South 30 degrees 39 minutes 38 seconds West a distance of 106.98 feet to a point;
2. South 29 degrees 41 minutes 22 seconds West a distance of 168.08 feet to a point, and;
3. South 27 degrees 41 minutes 13 seconds West a distance of 78.33 feet to a point;

Thence leaving the right-of-way line of State Route 93, and along the North line of the tract as recorded in Official Record 102 at page 197, North 54 degrees 27 minutes 02 seconds West, passing through an iron pipe found at 8.42 feet, going a total distance of 171.42 feet to an iron pin found on the Northwest corner of the tract as recorded in Official Record 102 at page 197;

Thence along the West line of the tract as recorded in Official Record 102 at page 197, South 25 degrees 25 minutes 35 seconds West a distance of 116.09 feet to an iron pipe found;

Thence continuing along the grantor's east line, South 26 degrees 05 minutes 27 seconds West a distance of 109.87 feet to an iron pipe found on the Southwest corner of the tract as recorded in Official Record 11 at page 246;

Thence continuing along the grantor's east line, South 26 degrees 34 minutes 22 seconds West a distance of 464.60 feet to an axle found on the grantor's Southeast corner, and the existing corporation line of The City of Logan;

... - Mathematically
... County Engineer's Office

MAW DATE 1-23-01

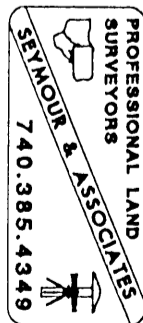


EXHIBIT "A"

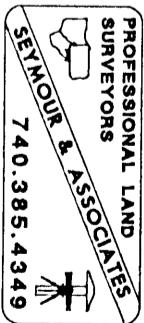
Thence along the grantor's south line, and the corporation line of The City of Logan, North 81 degrees 06 minutes 47 seconds West a distance of 1,415.84 feet to a point from which an iron pin found bears, North 81 degrees 06 minutes 47 seconds West a distance of 5.96 feet;

Thence along the grantor's West line, and the corporation line of The City of Logan, North 07 degrees 40 minutes 49 seconds East a distance of 319.99 feet to an axle found;

Thence leaving the corporation line of The City of Logan, and continuing along the grantor's West line, North 08 degrees 46 minutes 45 seconds East a distance of 1,319.93 feet to the point of beginning containing 52.194 acres, more or less, and subject to the right-of-way of State Route 93 and all easements of record.

The bearings used in the above described tract were based on monumentation found on the North line of Section 12 as bearing South 81 degrees 32 minutes 58 seconds East and are for the determination of angles only.

The above described tract was surveyed by George F. Seymour, Ohio Professional Surveyor No. 6044, in November of 1994.



FALLS 12
4002/L #40942L
 64

PROFESSIONAL LAND SURVEYORS

- OIL WELL PERMITTING
- LOTS & FARM SURVEYS
- SUB-DIVISIONS
- LAND PLANNING
- CONSTRUCTION

SEYMOUR & ASSOCIATES

69 S. MARKET ST.
 P.O. Box 624
 Logan, Ohio 43138
385-5954

PLAT OF SURVEY

BEGING PART OF FR. LOT 23 ~
 SECTION 12 ~ T. 14 N ~ R. 17 W ~
 FALLS TOWNSHIP ~
 HOCKING COUNTY ~
 STATE OF OHIO.

APPROVALS:

12-1-94

STATE OF OHIO
 REGISTERED SURVEYOR
 GEORGE F. SEYMOUR
 S-6044

DATE: 11/29/04

BY: *[Signature]*

PROJ. NO.: 4002/L #40942L (KITCHEN)

FOR: DOUGLAS E. & TERESA C. KITCHEN (GRANTEES)

I HEREBY CERTIFY THAT AN ACTUAL SURVEY WAS MADE UNDER MY DIRECT SUPERVISION ON THE PREMISES SHOWN HEREON ON THE 13TH DAY OF NOV. 2004 AND THAT THIS PLAT IS A CORRECT REPRESENTATION OF THE PREMISES AS FURNISHED BY SAID SURVEY. I FURTHER CERTIFY THAT THERE ARE NO ENCUMBRANCES TO THESE LANDS UNLESS SHOWN EXCEPT AS SHOWN HEREON.

George F. Seymour
 Professional Surveyor No. 60824

REFERENCES:

- DEEDS AS NOTED
- COUNTY TAX MAPS
- PREVIOUS SURVEYS
- EXISTING MONUMENTS

SCALE:
 1" = 200'

GRAPHIC SCALE: 0, 100, 200

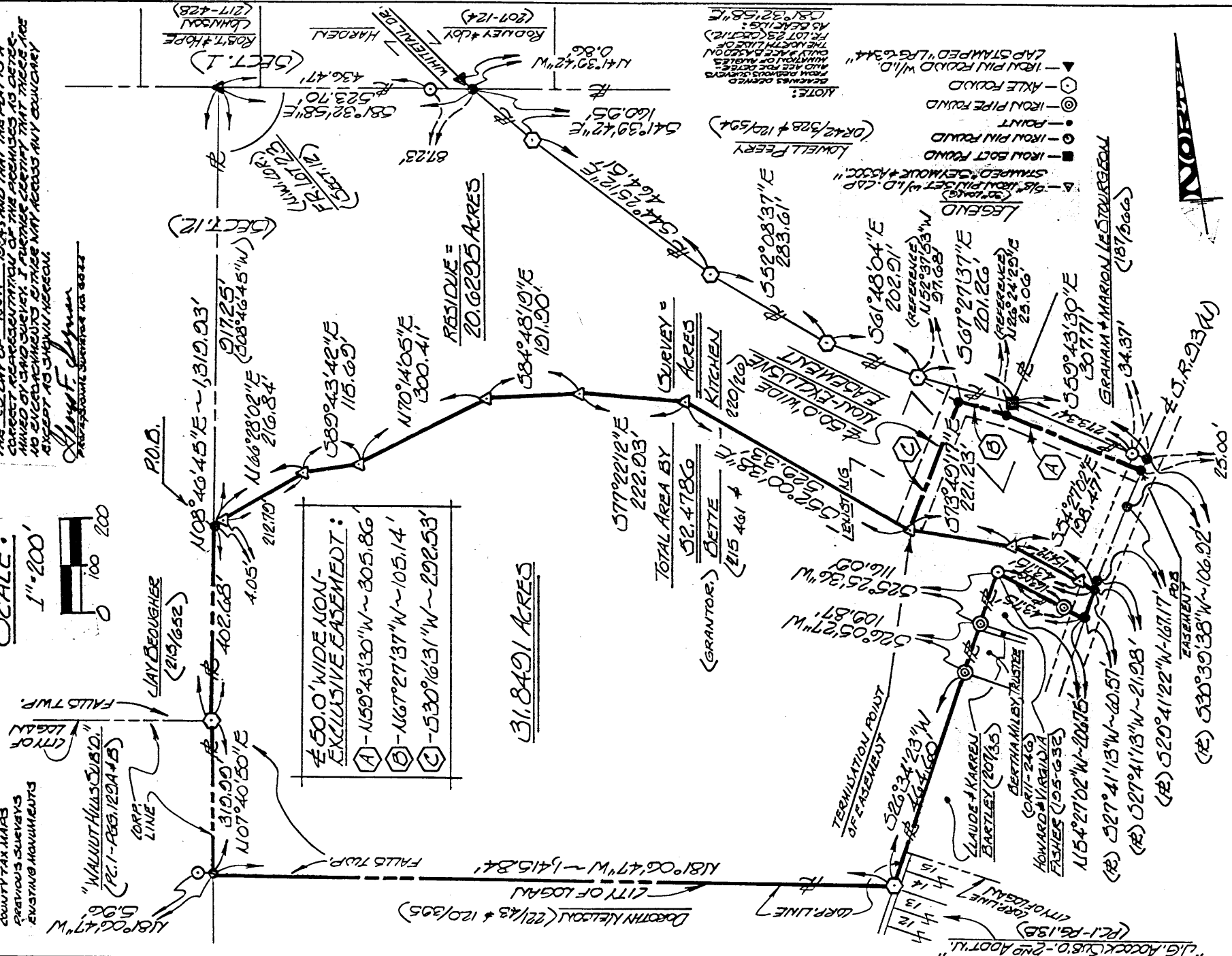


EXHIBIT "A"

Being a part of the tract of land that is now or formerly in the name of Bette Kitchen as recorded in Deed Book 215 at page 461 and Deed Book 220 at page 26, Hocking County Recorder's Office, said tract being part of Fractional Lot 23 in Section 12, T14N, R17W, Falls Township, Hocking County, State of Ohio and being more particularly described as follows:

Beginning at a point on the grantor's west line and the west line of Fractional Lot 23 from which an iron pin with an identification cap stamped "LPG 6344" found on the northwest corner of Fractional Lot 23 bears North 08 degrees 46 minutes 45 seconds East a distance of 917.25 feet;

Thence leaving the west line of Fractional Lot 23 and the grantor's west line and with a new line through the grantor's land the following eight courses:

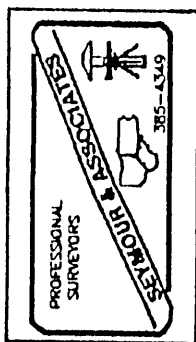
- [1] North 66 degrees 28 minutes 02 seconds East, passing through a 5/8" X 30" iron pin with a plastic identification cap set at 4.05 feet, going a total distance of 216.84 feet to a 5/8" X 30" iron pin with a plastic identification cap set;
- [2] South 89 degrees 43 minutes 42 seconds East a distance of 115.69 feet to a 5/8" X 30" iron pin with a plastic identification cap set;
- [3] North 70 degrees 14 minutes 05 seconds East a distance of 300.41 feet to a 5/8" X 30" iron pin with a plastic identification cap set;
- [4] South 84 degrees 48 minutes 19 seconds East a distance of 191.90 feet to a 5/8" X 30" iron pin with a plastic identification cap set;
- [5] South 77 degrees 22 minutes 12 seconds East a distance of 222.93 feet to a 5/8" X 30" iron pin with a plastic identification cap set;
- [6] South 52 degrees 00 minutes 38 seconds East a distance of 529.33 feet to a 5/8" X 30" iron pin with a plastic identification cap set;
- [7] South 73 degrees 49 minutes 17 seconds East a distance of 221.23 feet to a 5/8" X 30" iron pin with a plastic identification cap set, and;
- [8] South 54 degrees 27 minutes 02 seconds East, passing through a 5/8" X 30" iron pin with a plastic identification cap set at 154.72 feet, going a total distance of 198.47 feet to a point in the center of State Route 93;

Thence along the center of said road South 27 degrees 41 minutes 13 seconds West a distance of 60.57 feet to a point;

Thence leaving the center of said road North 54 degrees 27 minutes 02 seconds West, passing through an iron pipe found at 43.75 feet, going a total distance of 206.75 feet to an iron pin found;

Thence South 25 degrees 25 minutes 36 seconds West a distance of 116.09 feet to an iron pipe found;

Thence South 26 degrees 05 minutes 27 seconds West a distance of 109.87 feet to an iron pipe found;



[continued on page 2]

EXHIBIT "A"

Thence South 26 degrees 34 minutes 23 seconds West a distance of 464.60 feet to an axle found on the grantor's southeast corner and the City of Logan Corporation line;

Thence along said corporation line and the grantor's south line, North 81 degrees 06 minutes 47 seconds West a distance of 1415.84 feet to a point being the grantor's southwest corner, said point being referenced by an iron pin found which bears South 81 degrees 06 minutes 47 seconds East a distance of 5.96 feet;

Thence leaving the corporation line and along the grantor's west line the following two courses:

- [1] North 07 degrees 40 minutes 50 seconds East a distance of 319.99 feet to an axle found, and;
- [2] North 08 degrees 46 minutes 45 seconds East a distance of 402.68 feet to the place of beginning, containing 31.8491 acres, more or less, and subject to the right of way of State Route 93 and all easements of record.

Also included with the above described tract is a 50.0 foot wide non exclusive easement, the centerline being more particularly described as follows:

Beginning, for reference, at a point being the northeast corner of the above described tract and in the center of State Route 93;

Thence along the center of said road the following three courses:

- [1] North 27 degrees 41 minutes 13 seconds East a distance of 21.98 feet to a point;
- [2] North 29 degrees 41 minutes 22 seconds East a distance of 167.17 feet to a point, and;
- [3] North 30 degrees 39 minutes 38 seconds East a distance of 81.92 feet to a point being the principal place of beginning for the easement herein described;

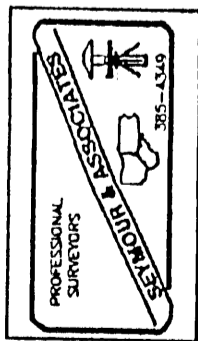
Thence leaving the center of said road and along the center of said easement the following three courses:

- [1] North 59 degrees 43 minutes 30 seconds West a distance of 305.86 feet to a point, said point being referenced by an iron bolt found which bears North 26 degrees 24 minutes 29 seconds East a distance of 25.06 feet;
- [2] North 67 degrees 27 minutes 37 seconds West a distance of 105.14 feet to a point, said point being referenced by an axle found which bears North 52 degrees 37 minutes 53 seconds West a distance of 97.68 feet, and;
- [3] South 30 degrees 16 minutes 31 seconds West a distance of 292.53 feet to a 5/8" X 30" iron pin with a plastic identification cap set on the north line of the above described tract, said iron pin being the termination point of the easement.

All 5/8" X 30" iron pins with plastic identification caps set are stamped "Seymour & Associates".

The bearings used in the above described tract were based on the north line of Fractional Lot 23 as bearing South 81 degrees 32 minutes 58 seconds East and are for the determination of angles only.

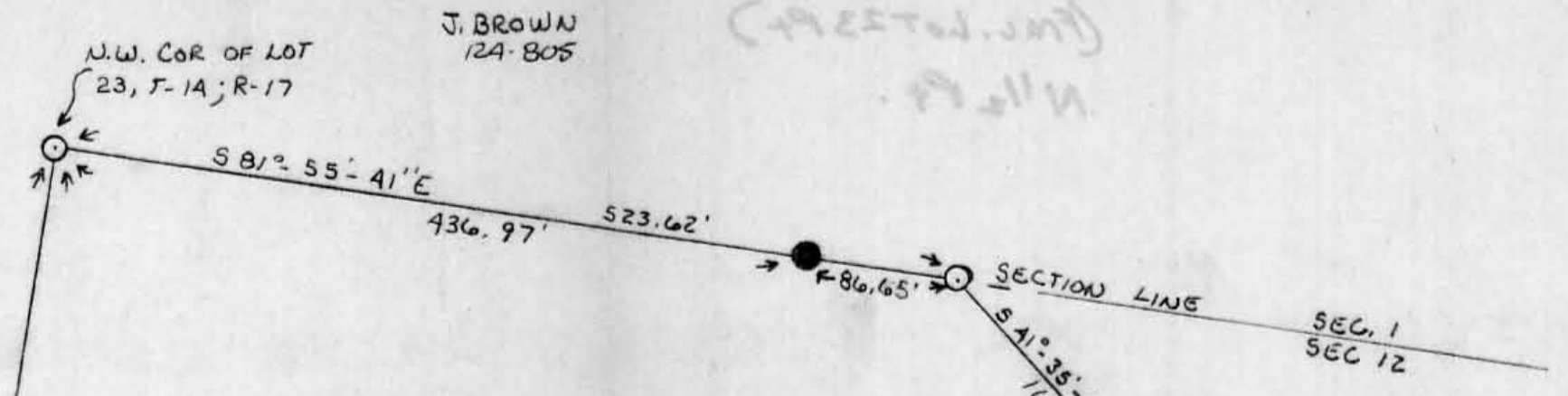
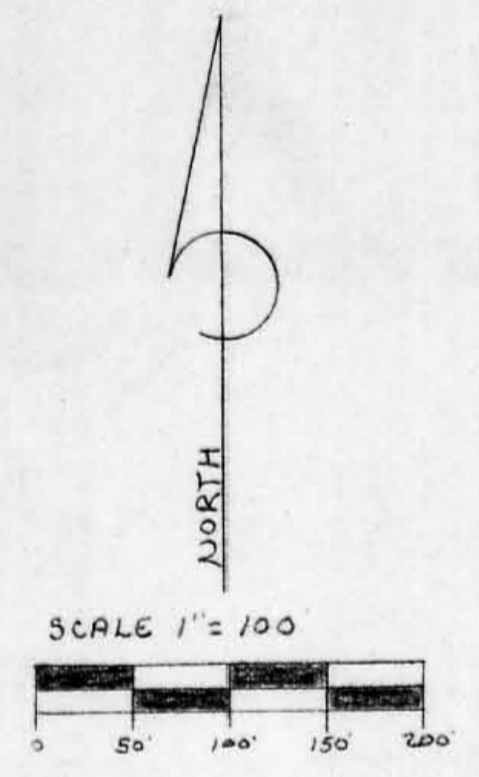
The above described tract was surveyed by George F. Seymour, Ohio Professional Surveyor No. 6044, November 29, 1994.



Approved - *[Signature]*
Hocking County Engineer's Office
Date 12-1-94

BEING A PART OF LOT NO. 23, T-14-N; R-17-W
SECTION 12, FALLS TOWNSHIP, HOCKING COUNTY
STATE OF OHIO.

Approved - Mathematically
Hocking County Auditor's Office
By _____ Date _____



L. G. A. PERRY
120-594

LARRY M. KITCHEN
176-668
± 52.6345 ACRES
LOT 23 PT.

G. G. M. LESTOURGEON
187-966

J. BROWN
117-407
124-805

U 8° 44' 52" E
LINE

WEST

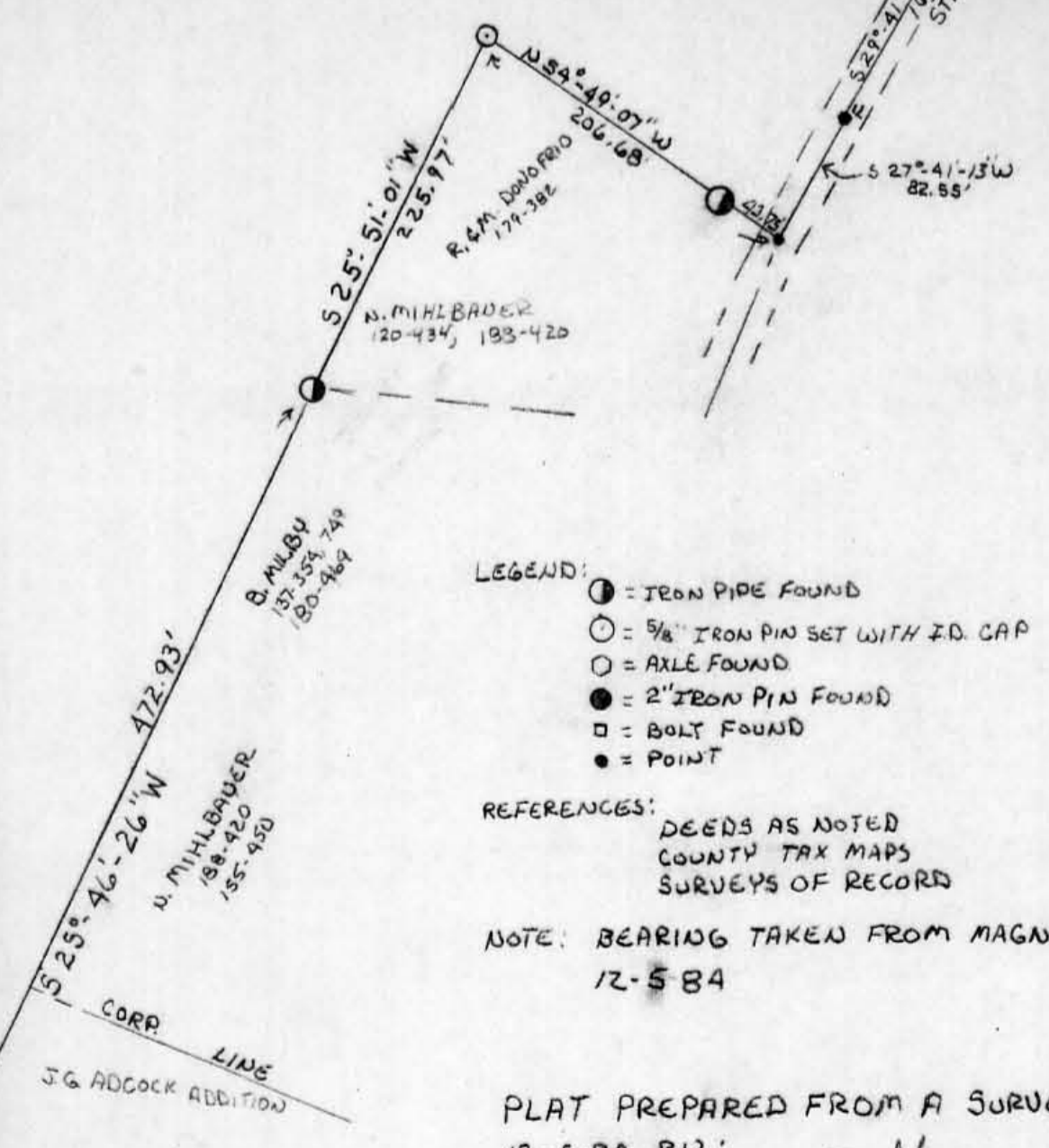
CORP LINE

WALNUT HILLS

CORP

CORP

E. & D. NELSON
120-395



- LEGEND:
- = IRON PIPE FOUND
 - = 5/8" IRON PIN SET WITH I.D. CAP
 - = AXLE FOUND
 - = 2" IRON PIN FOUND
 - = BOLT FOUND
 - = POINT
- REFERENCES:
DEEDS AS NOTED
COUNTY TAX MAPS
SURVEYS OF RECORD
- NOTE: BEARING TAKEN FROM MAGNETIC
12-5-84

DRG. 12-6-84 BY SB.W
WILLIAM R. SHAW & ASSOCIATES, INC.
Consulting Engineers & Surveyors
63 W. Main St. Logan, OH 43138
(614) 385-4349

PLAT PREPARED FROM A SURVEY MADE
12-5-84 BY:
William R. Shaw
OHIO REGISTERED SURVEYOR NO. 6650

William R. Shaw & Associates, Inc.

Consulting Engineers & Surveyors

WILLIAM R. SHAW, P.E., P.S.

PHONE
614-385-4349

63 WEST MAIN ST.
LOGAN, OHIO 43138

Description of Survey for Central Oil Supply

Being a part of the tract of land last transferred to Larry Kitchen as recorded in Deed Book 176 at page 668, Hocking County Recorder's Office, said tract being a part of Lot 23 in the west half of Section 12, T14N, R17W, Falls Township, Hocking County, State of Ohio, and being more particularly described as follows:

Beginning at a 5/8" iron pin with I.D. cap set at the northwest corner of Lot 23 in Section 12, T14N, R17W;

Thence with the north line of said section, South 81° 55' 41" East, passing a 2" iron pin found at 436.97 feet, going a total distance of 523.62 feet to a 5/8" iron pin with I.D. cap set at the northwest corner of a 12.64 acre tract recorded in Deed Book 120 at page 594;

Thence with the south line of said 12.64 acre tract, and leaving the north line of Section 12, the following five courses:

- (1) South 41° 35' 26" East a distance of 161.82 feet to an axle found,
- (2) South 44° 24' 01" East a distance of 464.45 feet to an axle found,
- (3) South 52° 07' 10" East a distance of 283.51 feet to an axle found,
- (4) South 61° 57' 19" East a distance of 202.06 feet to an axle found, and
- (5) South 65° 42' 10" East a distance of 199.15 feet to a bolt found at the southwest corner of a 0.616 acre tract recorded in Deed Book 187 at page 966;

Thence with the south line of said 0.616 acre tract, South 60° 57' 39" East, passing a 5/8" iron pin with I.D. cap set at 273.40 feet, going a total distance of 310.21 feet to a point in the centerline of State Route 93;

Thence with the centerline of said road, the following three courses:

- (1) South 30° 39' 38" West a distance of 106.69 feet to a point,
- (2) South 29° 41' 22" West a distance of 167.17 feet to a point, and
- (3) South 27° 41' 13" West a distance of 82.55 feet to a point at the northeast corner of a 0.52 acre tract recorded in Deed Book 179 at page 382;

Thence with the north line of said 0.52 acre tract, North 54° 49' 07" West, passing an iron pipe found at 43.75 feet, going a total distance of 206.68 feet to a 5/8" iron pin with I.D. cap set at the northwest corner of said 0.52 acre tract;

a distance of 225.97 feet

Thence South 25° 51' 01" West to an iron pipe found at the northwest corner of a 2.22 acre tract recorded in Deed Book 188 at page 420 and Deed Book 155 at page 450;

Thence along the west line of said 2.22 acre tract and along the west line of the J. G. Adcock 2nd Addition, South 25° 46' 26" West a distance of 472.93 feet to a 5/8" iron pin with I.D. cap set at the northeast corner of a 19.537 acre tract recorded in Deed Book 120 at page 395 on the corporation line of the City of Logan;

William R. Shaw & Associates, Inc.

Consulting Engineers & Surveyors

WILLIAM R. SHAW, P.E., P.S.

PHONE
614-385-4349

63 WEST MAIN ST.
LOGAN, OHIO 43138

Description of Survey for Central Oil Supply (continued)

Thence with the north line of said 19.537 acre tract and with the corporation line, North $80^{\circ} 40' 08''$ West a distance of 1424.69 feet to a $5/8''$ iron pin with I.D. cap set at the northwest corner of said 19.537 acre tract on the west line of Lot 23;

Thence with the west line of Lot 23, North $8^{\circ} 44' 52''$ East, passing an axle found at 319.90 feet, going a total distance of 1636.29 feet to the place of beginning, containing 52.6745 acres, more or less, subject to the right of way of State Route 93 and all easements of record.

The bearings used in the above description were derived from magnetic north taken on December 5, 1984, and are for the determination of angles only.

The above description was prepared from a survey made on December 5, 1984, by William R. Shaw, Ohio Registered Surveyor No. 6650.

Approved - Mathematically
Hocking County Auditor's Office
By JH Date 12-6-84

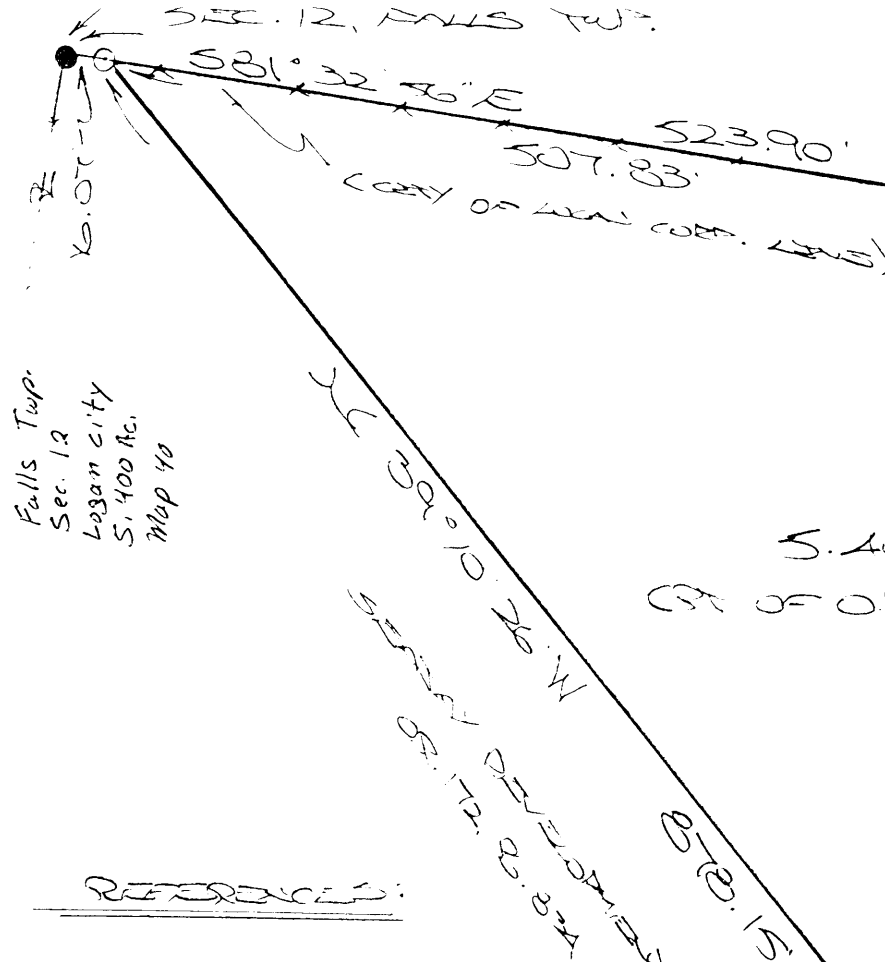
William R. Shaw

TOWNSHIP, T-4N, R-17W, CITY OF LOGAN, HOCKING CO., OHIO

NOTE: CORNER MARKINGS ARE BASED ON A RECONCILED SURVEY MAKING THE WEST LINE OF SEC. 12 RUN S81°32'56"E.

Approved - Mathematically
Hocking County Engineer's Office

BY W.B. DATE 11-04-03



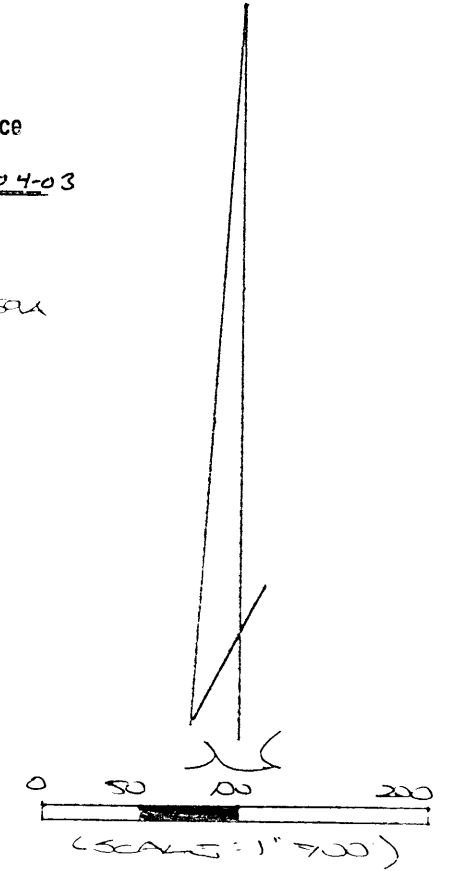
Falls Twp.
Sec. 12
Logan city
5.400 Ac.
Map 40

5.400 ACRES
(PT. OF O.R. VOL. 264, P. 324)

L. PERRY
O.R. 264, P. 324 VOL. 120, P. 594

REFERENCES:

- COUNTY TAX RATES
- SURVEYS OF RECORD
- 1880 PLAT RECORDS
- RECORDS (AS CORRECTED)



PLAT PREPARED FROM SURVEY MADE
OCTOBER 31, 2003, BY:

[Signature] (11-4-03)
OHIO REGISTERED SURVEYOR NO. 6803

**DESCRIPTION OF SURVEY FOR THE LOGAN METROPOLITAN
HOUSING AUTHORITY**

Being a part of the tract of land described in Vol. 264, Pg. 324, Hocking Co. Official Records, situated in Frac. Lot No. 23 of Sec. 12, Falls Twp., T-14N, R-17W, City of Logan, Hocking Co., Ohio, and being more particularly described as follows:

Beginning at an iron pin set on the north line of said Sec. 12 from which an iron pin found on the NW corner of Frac. Lot No. 23 bears N 81 degrees 32' 56" W a distance of 16.07 ft.;

Thence, with said north section line and along the City of Logan corporation line, S 81 degrees 32' 56" E a distance of 507.83 ft. to an iron pin set;

Thence with the easterly boundary of the tract of which this survey is a part and continuing with the City of Logan corporation line the following two (2) courses:

1) S 41 degrees 39' 42" E a distance of 160.95 ft. to an iron axle found;

2) S 44 degrees 24' 50" E a distance of 293.73 ft. to an iron pin set;

Thence, with a new line, S 43 degrees 17' 58" W a distance of 379.35 ft. to an iron pin set;

Thence, with the easterly line of the tract of which this survey is a part, N 39 degrees 10' 26" W a distance of 878.15 ft. to the place of beginning, containing 5.400 acres, more or less, and being subject to all valid easements.

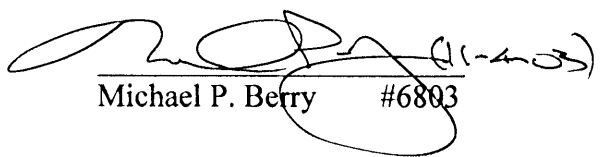
Cited bearings are based on a previous survey making the north line of Sec. 12 run S 81 degrees 32' 56" E.

All iron pins described as being set are 5/8" X 30" with an attached plastic identification cap.

The above description is the result of an actual survey made by Michael P. Berry, Ohio Registered Surveyor No. 6803, on October 31, 2003.

Approved - Mathematically
Hocking County Engineer's Office

BY WLB DATE 11-04-03


Michael P. Berry #6803

SURVEY PLAT OF A 1.341 ACRE ROAD EASEMENT FOR EARTH WORKS FALLS 12

Situated in Falls Township, Hocking County, Ohio; being part of Lot 23 in the West half of Section 12, Township 14, Range 17.

**EASEMENT
1.341 AC.**

NORTH



SCALE

1" = 200'

LEGEND

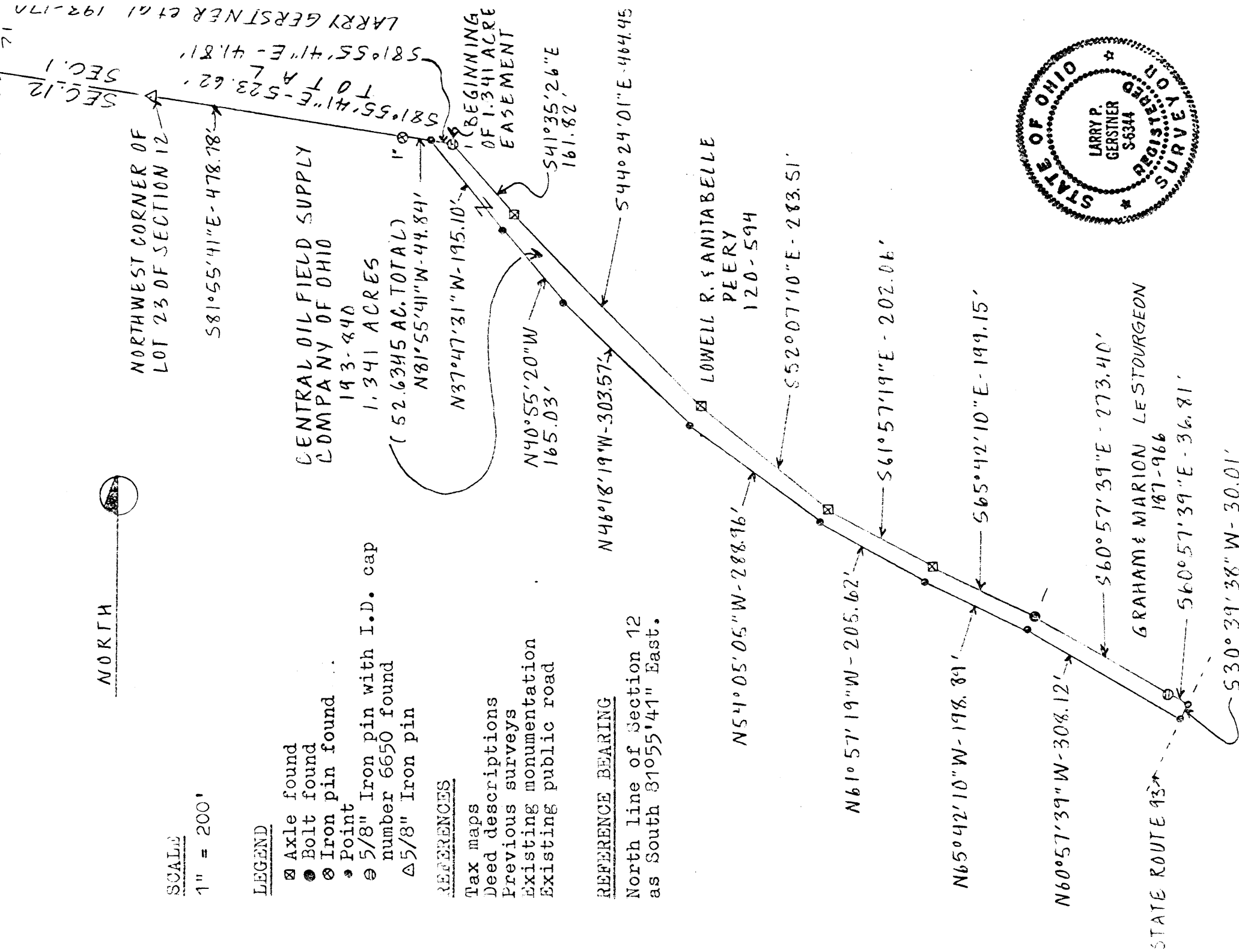
- ☒ Axle found
- Bolt found
- ⊗ Iron pin found
- Point
- ⊙ 5/8" Iron pin with I.D. cap number 6650 found
- △ 5/8" Iron pin

REFERENCES

- Tax maps
- Deed descriptions
- Previous surveys
- Existing monumentation
- Existing public road

REFERENCE BEARING

North line of Section 12 as South 81°55'41" East.



I hereby certify that an actual survey was made under my supervision of the premises shown hereon on the 8th day of November, 1985 and that the plat is a correct representation of the premises as described by said survey.

Larry P. Gerstner
Registered Surveyor No. 6344

Approved - Mathematically
Hocking County Engineer's Office.
By D-FN Date 11-12-85

SURVEY DESCRIPTION OF A 1.341 ACRE ROAD EASEMENT FOR EARTH WORKS

Situated in Falls Township, Hocking County, Ohio; being part of Lot 23 in the West half of Section 12, Township 14, Range 17; being a road easement of ingress and egress; and being more particularly described as follows:

Commencing for reference at a 5/8" iron pin at the Northwest corner of Lot 23 of Section 12; thence with the North line of said Section 12 South 81 degrees 55 minutes 41 seconds East a distance of 523.62 feet to a 5/8" iron pin with I.D. cap number 6650 found and being the point of Beginning of the surveyed road easement to be described; thence South 41 degrees 35 minutes 26 seconds East a distance of 161.82 feet to an axle found; thence South 44 degrees 24 minutes 01 seconds East a distance of 464.45 feet to an axle found; thence South 52 degrees 07 minutes 10 seconds East a distance of 283.51 feet to an axle found; thence South 61 degrees 57 minutes 19 seconds East a distance of 202.06 feet to an axle found; thence South 65 degrees 42 minutes 10 seconds East a distance of 193.15 feet to a bolt found; thence South 60 degrees 57 minutes 39 seconds East a distance of 310.21 feet to a point in the centerline of State Route 93 and passing a 5/8" iron pin with I.D. cap number 6650 found at a distance of 273.40 feet; thence with the centerline of said State Route 93 South 30 degrees 39 minutes 38 seconds West a distance of 30.01 feet to a point; thence leaving said State Route 93 North 60 degrees 57 minutes 39 seconds West a distance of 308.12 feet to a point; thence North 65 degrees 42 minutes 10 seconds West a distance of 198.89 feet to a point; thence North 61 degrees 57 minutes 19 seconds West a distance of 205.62 feet to a point; thence North 54 degrees 05 minutes 05 seconds West a distance of 288.96 feet to a point; thence North 46 degrees 18 minutes 19 seconds West a distance of 303.57 feet to a point; thence North 40 degrees 55 minutes 20 seconds West a distance of 165.03 feet to a point; thence North 37 degrees 47 minutes 31 seconds West a distance of 195.10 feet to a point from which a 1" iron pin found bears North 81 degrees 55 minutes 41 seconds West at a distance of 44.24 feet; thence South 81 degrees 55 minutes 41 seconds East a distance of 41.81 feet to the point of beginning containing 1.341 acres more or less, subject to other public and private easements of record.

The above 1.341 acre easement survey is intended to describe a roadway easement along the Northeast boundary and is part of a 52.6345 acre tract of land as deeded to Central Oil Field Supply Company of Logan, Deed reference Volume 193, Page 840, Hocking County Recorder's Office. This survey was based upon information obtained from tax maps, deed descriptions, previous surveys, existing monumentation, and an existing public road. The reference bearing for this survey is the North line of Section 12 as South 81 degrees 55 minutes 41 seconds East. No monumentation was set by this survey. The above described property was surveyed by Larry P. Gerstner, Ohio Registered Surveyor No. 6344, on November 8, 1985.

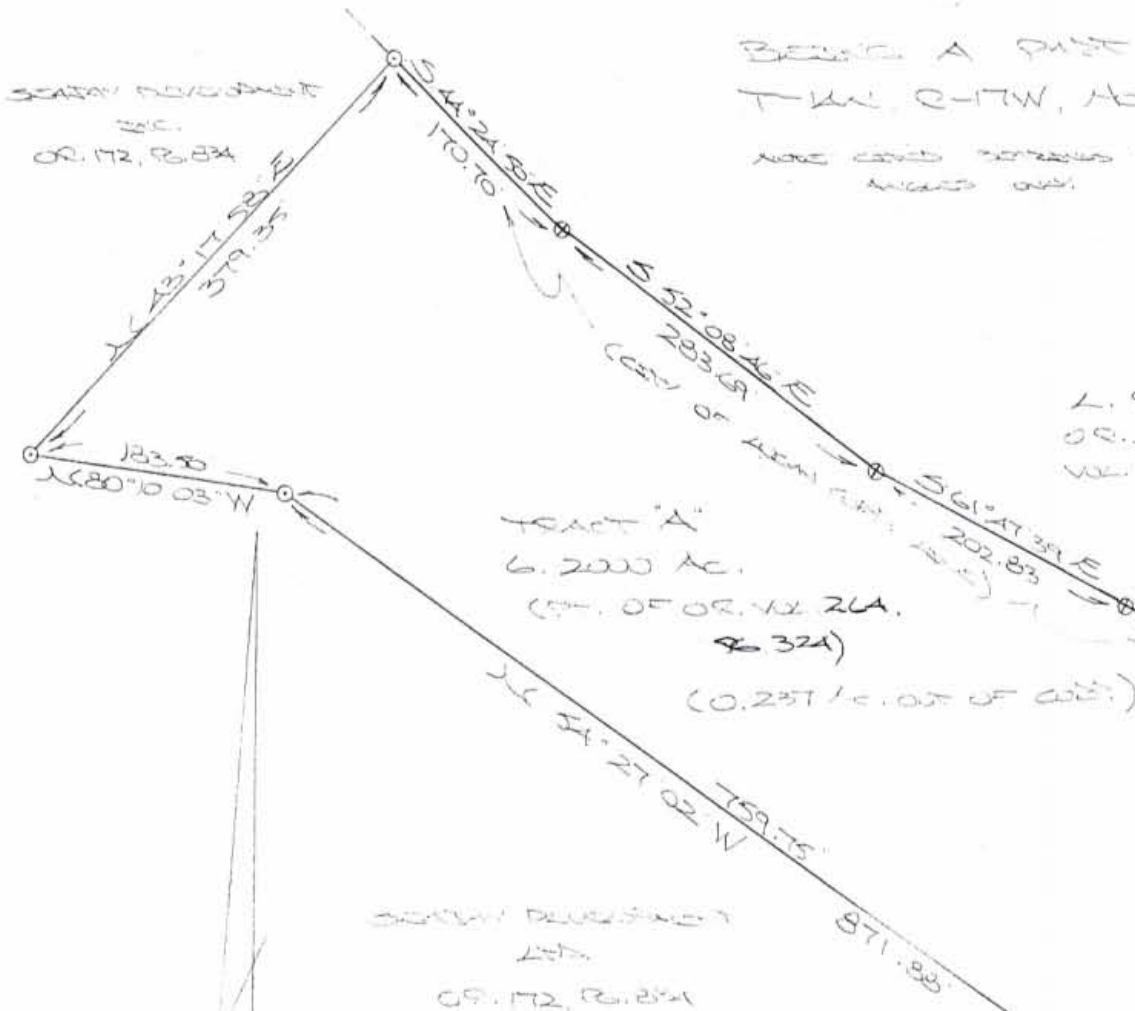


Approved - Mathematically
Hocking County Engineer's office
By D. EN Date 11-12-85

Larry Gerstner

Survey by:

EARTH WORKS - Surveying, Engineering, and Construction
119 West Main Street, Logan, Ohio 43138 385-4260



BEING A PART OF SEC. 40 & 23 OF TWP. 12, R. 17, W. 2, Hocking Co., OHIO

NOTE: CORNER MARKERS WERE ADDITIONALLY ASSIGNED AND ARE FOR THE DETERMINATION OF ANGLES ONLY.

REFERENCES:

- COUNTY TAX MAPS
- SUBDIVISION RECORDS
- 1880 PLAT RECORDS
- DOTS (AS NOTED)

L. POOREY
O.C. 42, P. 328
VOL. 120, P. 594

E. M. LIEBURGER
VOL. 157, P. 200

SEC. 40 & 23 12.24 AC. TRACT,
O.C. VOL. 42, P. 328

CORNER-NORTH CORNER OF
SEC. 40 & 23 12.24 AC. TRACT, O.C. VOL.
172, P. 834

330° 39' 38" W
106.92

529° 41' 22" W
167.17

527° 41' 13" W
82.55

TRACT A
6.2000 AC.
(PT. OF O.C. VOL. 26A,
P. 324)
(0.237 AC. OUT OF O.C. VOL. 26A)

TRACT B
2.000 AC.
(PT. OF O.C. VOL. 26A,
P. 324)
(0.048 AC. OUT OF O.C. VOL. 26A)

Approved - Mathematically
Hocking County Engineer's Office

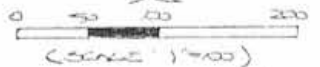
BY WB FIN DATE 01-14-02
Revised By: WB 11-14-03

CONDITIONAL APPROVAL/
TRANSFER Not to be used as
separate building site or
transferred as an independent
parcel in the future without
Planning Commission and/or
Health Department approval

PLAT PREPARED FROM SURVEY MADE
DEC 20, 2002 BY:

O.C. VOL. 102, P. 97
(REVISED 11-14-03)

- = 70' 00" IRON PIPE SET IN CONCRETE
- △ = 1" IRON PIPE SET IN CONCRETE
- = 1" IRON PIPE SET IN CONCRETE
- ⊕ = 1" IRON PIPE SET IN CONCRETE
- ⊙ = 1" IRON PIPE SET IN CONCRETE



**DESCRIPTION OF SURVEY FOR THE HOCKING
METROPOLITAN HOUSING AUTHORITY**

TRACT "A":

Being a part of the 52.479 Ac. tract described in Vol. 264, Pg. 324, Hocking Co. Official Records, situated in Frac. Lot No. 23 of Sec. 12, Falls Twp., T-14N, R-17W, City of Logan, Hocking Co., Ohio, and being more particularly described as follows:

Beginning at a point in the center of St. Rt. 93, said point being the eastern-most corner of the 53.479 Ac. tract described in O. R. Vol. 172, Pg. 834;

Thence, with the centerline of said St. Rt. 93, S 30 degrees 39' 38" W a distance of 60.00 ft. to a point;

Thence leaving St. Rt. 93 and with new lines the following five (5) courses:

1) N 59 degrees 43' 29" W, passing a point on the City of Logan corporation line at 35.00 ft. and an iron pin set at 45.00 ft., going a total distance of 303.24 ft. to an iron pin set;

2) S 32 degrees 13' 01" W a distance of 267.48 ft. to an iron pin set;

3) N 54 degrees 27' 02" W a distance of 759.75 ft. to an iron pin set;

4) N 80 degrees 10' 03" W a distance of 183.50 ft. to an iron pin set;

5) N 43 degrees 17' 58" E a distance of 379.35 ft. to an iron pin set on the northerly boundary of the tract of which this survey is a part;

Thence with the southwesterly boundary of the 12.64 Ac. tract described in O. R. Vol. 42, Pg. 328, and along the City of Logan corporation line the following five (5) courses:

1) S 44 degrees 24' 50" E a distance of 170.70 ft. to an iron axle found;

2) S 52 degrees 08' 46" E a distance of 283.69 ft. to an iron axle found;

3) S 61 degrees 47' 39" E a distance of 202.83 ft. to an iron axle found;

4) S 67 degrees 28' 43" E a distance of 201.28 ft. to an iron bolt found;

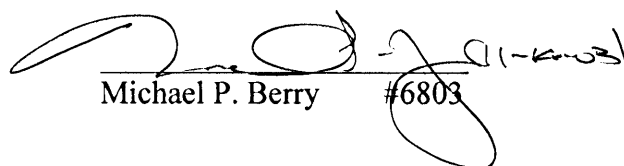
5) S 59 degrees 43' 29" E, passing the City of Logan corporation line at 272.71 ft. and passing an iron pin found at 273.34 ft., going a total distance of 307.71 ft. to the place of beginning, containing 6.200 acres, more or less, of which 0.048 acre is outside the City of Logan corporation lines, and being subject to the right-of-way of St. Rt. 93 and all valid easements.

Cited bearings were arbitrarily assigned and are for the determination of angles only.

All iron pins described as being set are 5/8" X 30" with an attached plastic identification cap.

The above description is the result of an actual survey made by Michael P. Berry, Ohio Registered Surveyor No. 6803, on Dec. 20, 2002.

CONDITIONAL APPROVAL/
TRANSFER Not to be used as
separate building site or
transferred as an independent
parcel in the future without
Planning Commission and/or
Health Department approval


Michael P. Berry #6803

Approved - Mathematically
Hocking County Engineer's Office

BY WB DATE 11-14-03

**DESCRIPTION OF SURVEY FOR THE HOCKING
METROPOLITAN HOUSING AUTHORITY**

TRACT "B":

Being a part of the 52.479 Ac. tract described in Vol. 264, Pg. 324, Hocking Co. Official Records, situated in Frac. Lot No. 23 of Sec. 12, Falls Twp., T-14N, R-17W, City of Logan, Hocking Co., Ohio, being more particularly described as follows:

Beginning, for reference, at a point in the center of St. Rt. 93, said point being the eastern-most corner of the 52.479 Ac. tract described in O. R. Vol. 172, Pg. 834;

Thence, with the centerline of said St. Rt. 93, S 30 degrees 39' 38" E a distance of 60.00 ft. to a point, said being the principal place of beginning for the tract herein described:

Thence with center of said state route the following three (3) courses:

- 1) S 30 degrees 39' 38" W a distance of 46.92 ft. to a point;
- 2) S 29 degrees 41' 22" W a distance of 167.17 ft. to a point;
- 3) S 27 degrees 41' 13" W a distance of 82.55 ft. to a point;

Thence, leaving St. Rt. 93 and with the northerly line of the 0.52 Ac. tract described in O. R. Vol. 102, Pg. 197, N 54 degrees 28' 25" W, passing a point on the City of Logan corporation line at 35.33 ft., and passing an iron pipe found at 43.75 ft., going a total distance of 206.64 ft. to an iron pin found;

Thence, N 54 degrees 27' 02" W a distance of 112.13 ft. to an iron pin set;

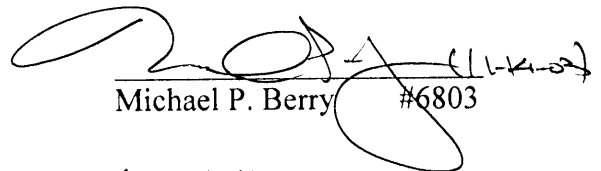
Thence with new lines the following two (2) courses:

- 1) N 32 degrees 13' 01" E a distance of 267.48 ft. to an iron pin set;
- 2) S 59 degrees 43' 29" E, passing an iron pin set at 258.24 ft., and passing the City of Logan corporation line at 268.24 ft, going a total distance of 303.24 ft. to the principal place of beginning, containing 2.000 acres, more or less, of which 0.237 Ac. is outside the City of Logan corporation lines and being subject to the right-of-way of St. Rt. 93 and all valid easements.

Cited bearings were arbitrarily assigned and are for the determinatin of angles only.

All iron pins described as being set are 5/8" X 30" with an attached plastic identification cap.

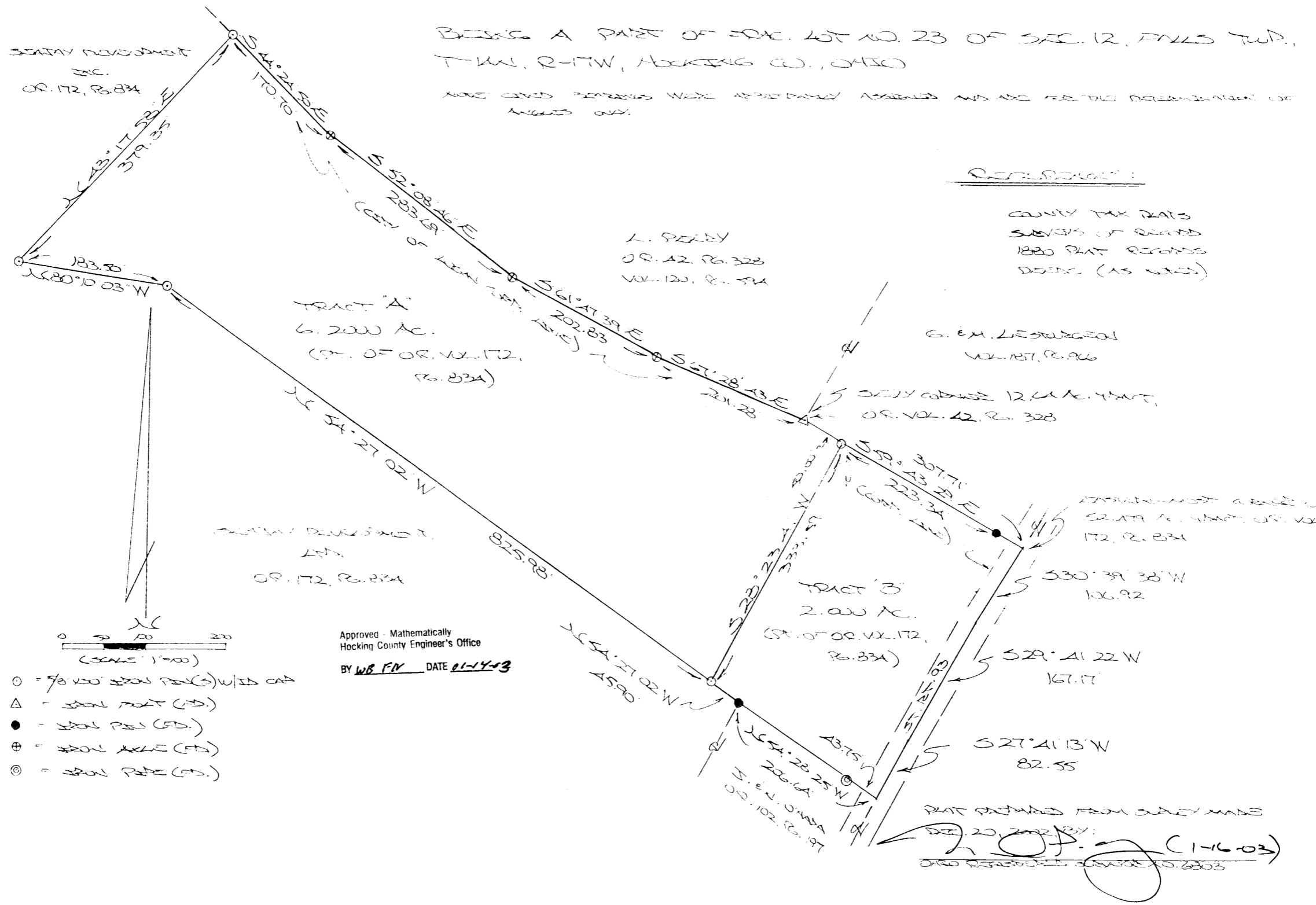
The above description is the result of an actual survey made by Michael P. Berry, Ohio Registered Surveyor No. 6803, on Dec. 20, 2002.


Michael P. Berry #6803

Approved - Mathematically
Hocking County Engineer's Office

BY W13 DATE 11-14-03

Falls Twp. Sec. 12
 6.2000 Ac.
 2.000 Ac.



BEING A PART OF PAC. LOT NO. 23 OF SEC. 12, FALLS TWP., T-W, R-17W, HOCKING CO., OHIO

NOTE: COPIED BEARINGS WERE APPROXIMATELY ASSIGNED AND ARE FOR THE DETERMINATION OF ANGLES ONLY.

REFERENCES:

COUNTY TAX MAPS
 SURVEYS OF RECORD
 1880 PLAT RECORDS
 DEEDS (AS NOTED)

L. PERDY
 OR. 42, PG. 328
 VOL. 120, P. 824

G. E. M. LINDBERG
 VOL. 187, P. 906

DEEDY CODED 12.4 AC. TRACT,
 OR. VOL. 42, PG. 328

APPROXIMATE AREA OF
 SECT. 16, TRACT OR. VOL.
 172, PG. 834

530° 39' 38" W
 106.92

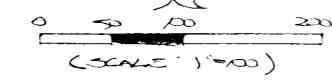
529° 41' 22" W
 167.17

527° 41' 13" W
 82.55

54° 27' 02" W
 45.90

SECT. 16 DEVELOPMENT
 SEC.
 OR. 172, PG. 834

SECT. 16 DEVELOPMENT
 LOTS
 OR. 172, PG. 834



- = 5/8" x 200' BRON PLATE (S) WITH ONE
- △ = IRON NAIL (S)
- = IRON PIN (S)
- ⊕ = IRON WIRE (S)
- ⊙ = IRON PIPE (S)

Approved - Mathematically
 Hocking County Engineer's Office
 BY WB FIN DATE 01-14-03

PLAT PREPARED FROM SURVEY MADE
 SEP. 20, 2002 BY:
[Signature] (1-16-03)
 DEED RECORDED IN VOLUME 10, PAGE 6303

DESCRIPTION OF SURVEY FOR SEAJAY DEVELOPMENT, LTD.

TRACT "A":

Being a part of the 52.479 Ac. tract described in Vol. 172, Pg. 834, Hocking Co. Official Records, situated in Frac. Lot No. 23 of Sec. 12, Falls Twp., T-14N, R-17W, City of Logan, Hocking Co., Ohio, and being more particularly described as follows:

Beginning at an iron bolt found on the southeasterly corner of the 12.64 Ac. tract described in O. R. Vol. 42, Pg. 328;

Thence, with part of the northerly boundary of said 52.479 Ac. parent tract, S 59 degrees 43' 29" E a distance of 50.00 ft. to an iron pin set;

Thence with new lines the following four (4) courses:

- 1) S 28 degrees 23' 41" W a distance of 333.59 ft. to an iron pin set;
- 2) N 54 degrees 27' 02" W a distance of 825.98 ft. to an iron pin set;
- 3) N 80 degrees 10' 03" W a distance of 183.50 ft. to an iron pin set;
- 4) N 43 degrees 17' 58" E a distance of 379.35 ft. to an iron pin set on the northerly

boundary of the tract of which this survey is a part;

Thence with said northerly boundary the following four (4) courses:

- 1) S 44 degrees 24' 50" E a distance of 170.70 ft. to an iron axle found;
- 2) S 52 degrees 03' 46" E a distance of 283.69 ft. to an iron axle found;
- 3) S 61 degrees 47' 39" E a distance of 202.83 ft. to an iron axle found;
- 4) S 67 degrees 28' 43" E a distance of 201.28 ft. to the place of beginning,

containing 6.2000 acres, more or less and being subject to all valid easements.

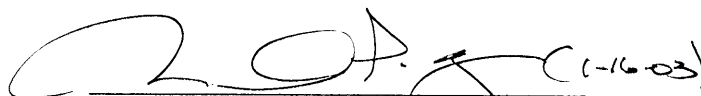
Cited bearings were arbitrarily assigned and are for the determination of angles only.

All iron pins described as being set are 5/8" X 30" with an attached plastic identification cap.

The above description is the result of an actual survey made by Michael P. Berry, Ohio Registered Surveyor No. 6803, on Dec. 20, 2002.

Approved - Mathematically
Hocking County Engineer's Office

BY J. W. B. DATE 1-16-03


Michael P. Berry #6803

DESCRIPTION OF SURVEY FOR SEAJAY DEVELOPMENT, LTD.

TRACT "B":

Being a part of the 52.479 Ac. tract described in Vol. 172, Pg. 834, Hocking Co. Official Records, situated in Frac. Lot No. 23 of Sec. 12, Falls Twp., T-14N, R-17W, City of Logan, Hocking Co., Ohio, and being more particularly described as follows:

Beginning at a point in the center of St. Rt. 93, said point being the eastern-most corner of the 52.479 Ac. tract described in O. R. Vol. 172, Pg. 834;

Thence with the center of said state route the following three (3) courses:

- 1) S 30 degrees 39' 38" W a distance of 106.92 ft. to a point;
- 2) S 29 degrees 41' 22" W a distance of 167.17 ft. to a point;
- 3) S 27 degrees 41' 13" W a distance of 82.55 ft. to a point;

Thence, leaving St. R. 93 and with the northerly line of the 0.52 Ac. tract described in O. R. Vol. 102, Pg. 197, N 54 degrees 28' 25" W, passing an iron pipe found at 43.75 ft., going a total distance of 206.64 ft. to an iron pin found;

Thence, N 54 degrees 27' 02" W a distance of 45.90 ft. to an iron pin set;

Thence, with a new line, N 28 degrees 23' 41" E a distance of 333.59 ft. to an iron pin set on the northerly boundary of the tract of which this survey is a part;

Thence, with said northerly line, S 59 degrees 43' 29" E, passing an iron pin found at 223.34 ft., going a total distance of 257.71 ft. to the place of beginning, containing 2.000 acres, more or less, and being subject to the right-of-way of St. Rt. 93 and all valid easements.


Cited bearings were arbitrarily assigned and are for the determination of angles only.

All iron pins described as being set are 5/8" X 30" with an attached plastic identification cap.

The above description is the result of an actual survey made by Michael P. Berry, Ohio Registered Surveyor No. 6803, on Dec. 20, 2002.

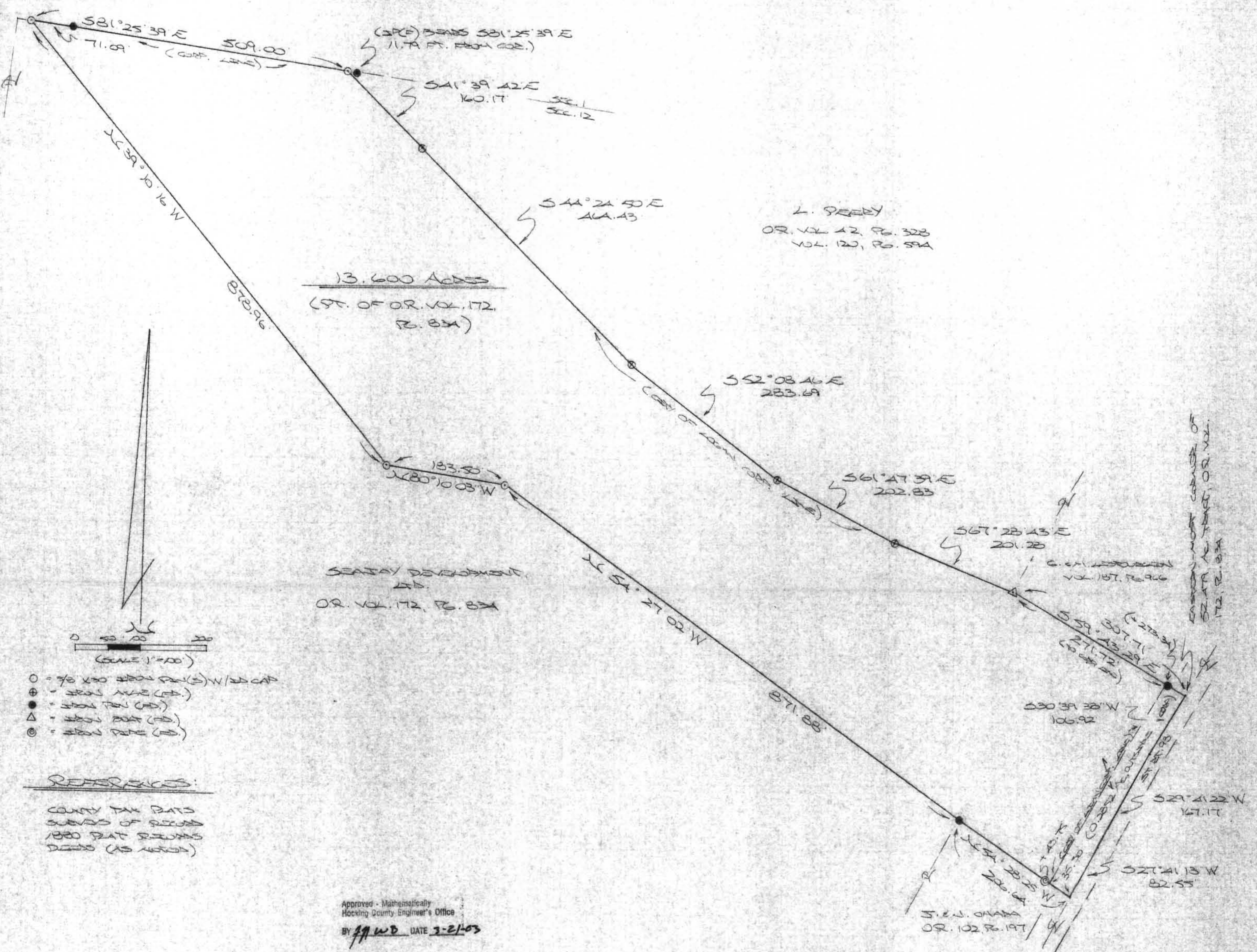
Approved - Mathematically
Hocking County Engineer's Office

BY WD FN DATE 01-14-03


Michael P. Berry #6803

BEING A PART OF FEAR. LOT NO. 23 OF SEC. 12, FALLS TWP., T-14N,
R-17W, CITY OF LOGAN, STATE OF OHIO

NOTE: GRID BEARINGS WERE ARBITRARILY ASSIGNED AND ARE FOR THE DETERMINATION OF ANGLES ONLY.



L. SEEBY
OR. VOL. 12, P. 328
VOL. 120, P. 594

13.600 Acres
(PT. OF OR. VOL. 172, P. 834)

SEASAY DEVELOPMENT, AD.
OR. VOL. 172, P. 834

EASTERN MOST CORNER OF
SEASAY DEVELOPMENT, OR. VOL.
172, P. 834

- = 7/8" x 30" IRON PIPE (S) W/ 25' CAP
- ⊕ = IRON PIPE (S)
- = IRON PIPE (S)
- △ = IRON PIPE (S)
- ⊙ = IRON PIPE (S)

REFERENCES:

COUNTY TAX RATES
SUBSIDY OF RECORD
1980 PLAT RECORDS
DEEDS (AS NOTED)

Approved - Mathematically
Hocking County Engineer's Office
BY J.P. W.D. DATE 3-21-03

PLAT PREPARED FROM SURVEY MADE DEC. 20,
2002 BY:
[Signature] (3-21-03)
OHIO REGISTERED SURVEYOR NO. 6803

DESCRIPTION OF SURVEY FOR SEAJAY DEVELOPMENT, LTD.

Being a part of the 52.479 Ac. tract described in Vol. 172, Pg. 834, Hocking Co. Official Records, situated in Frac. Lot No. 23 of Sec. 12, Falls Twp., T-14N, R-17W, City of Logan Hocking Co., Ohio, and being more particularly described as follows:

Beginning at a point in the center of St. Rt. 93, said point being the eastern-most corner of the 52.479 Ac. tract described in O. R. Vol. 172, Pg. 834;

Thence with the center of said state route the following three (3) courses:

- 1) S 30 degrees 39' 38" W a distance of 106.92 ft. to a point;
- 2) S 29 degrees 41' 22" W a distance of 167.17 ft. to a point;
- 3) S 27 degrees 41' 13" W a distance of 82.55 ft. to a point;

Thence, leaving St. Rt. 93 and with the northerly line of the 0.52 Ac. tract described in O. R. Vol. 102, Pg. 197, N 54 degrees 28' 25" W, passing the City of Logan corporation line at 35.30 ft. and passing an iron pipe found at 43.75 ft., going a total distance of 206.64 ft. to an iron pin found;

Thence with new lines the following three (3) courses:

- 1) N 54 degrees 27' 02" W a distance of 871.88 ft. to an iron pin set;
- 2) N 80 degrees 10' 03" W a distance of 183.50 ft. to an iron pin set;
- 3) N 39 degrees 10' 16" W a distance of 878.96 ft. to an iron pin set on the north line

of Sec. 12;

Thence with said north section line and the City of Logan corporation line, S 81 degrees 25' 39" E, passing an iron pin found at 71.09 ft., going a total distance of 509.00 ft. to an iron pin set, said pin being referenced by an iron pin found which bears S 81 degrees 25' 39" E a distance of 11.79 ft.;

Thence with the southwesterly boundary of the 12.64 Ac. tract described in O. R. Vol. 42, Pg. 328, and along the City of Logan corporation line the following six (6) courses:

- 1) S 41 degrees 39' 42" E a distance of 160.17 ft. to an iron axle found;
- 2) S 44 degrees 24' 50" E a distance of 464.43 ft. to an iron axle found;
- 3) S 52 degrees 08' 46" E a distance of 283.69 ft. to an iron axle found;
- 4) S 61 degrees 47' 39" E a distance of 202.83 ft. to an iron axle found;
- 5) S 67 degrees 28' 43" E a distance of 201.28 ft. to an iron bolt found;
- 6) S 59 degrees 43' 29" E, passing the City of Logan corporation line at 271.72 ft.

and passing an iron pin found at 273.34 ft., going a total distance of 307.71 ft. to the place of beginning, containing 13.600 acres, more or less, of which 0.2852 acre is outside the corporate limits of the City of Logan, and being subject to the right-of-way of St. Rt. 93 and all valid easements.

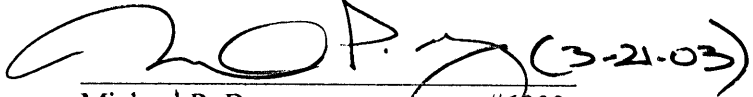
Cited bearings were arbitrarily assigned and are for the determination of angles only.

All iron pins described as being set are 5/8" X 30" with an attached plastic identification cap.

The above description is the result of an actual survey made by Michael P. Berry, Ohio Registered Surveyor No. 6803, on Dec. 20, 2002.

Approved - Mathematically
Hocking County Engineer's Office

BY MWB DATE 3-21-03


Michael P. Berry #6803