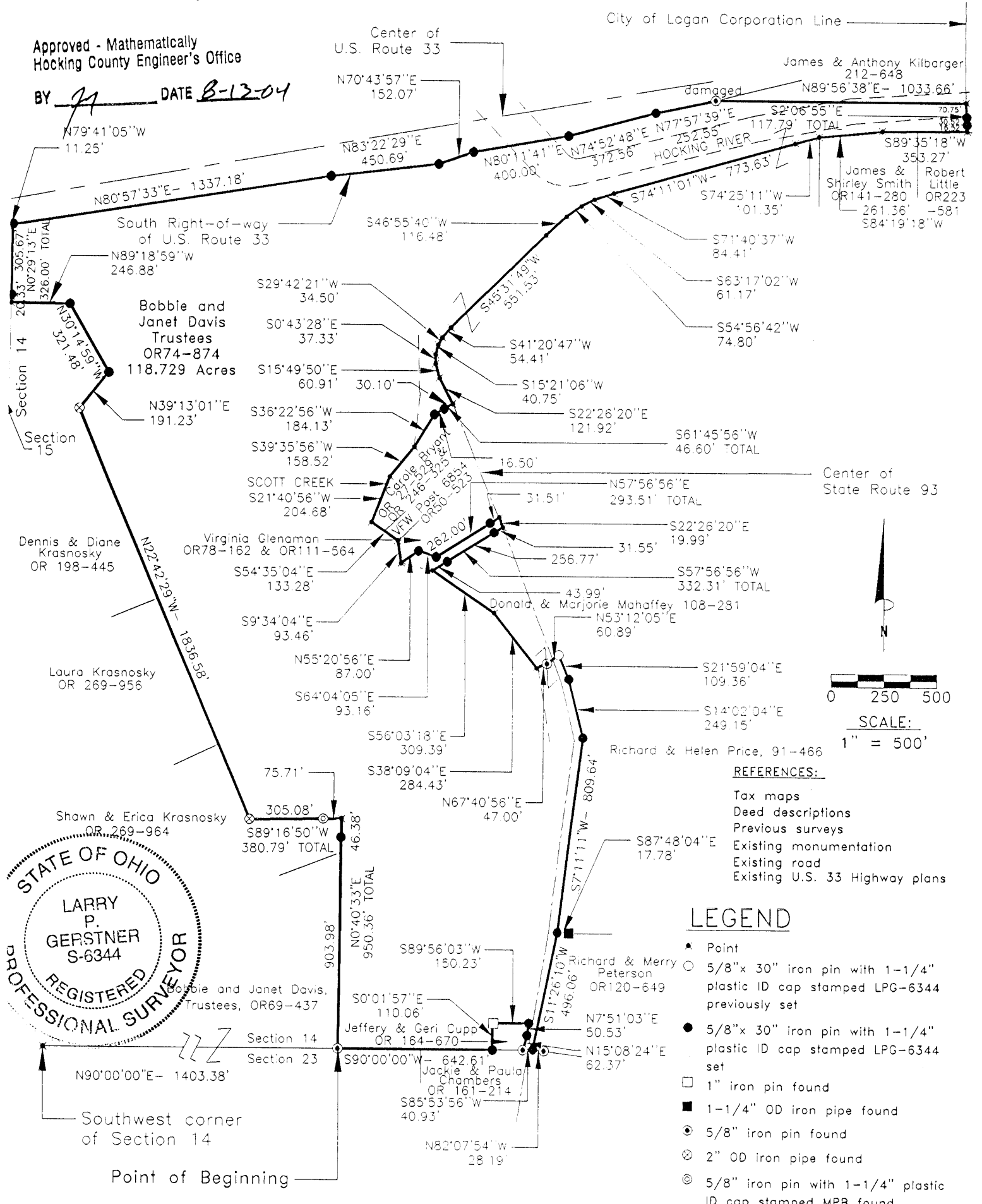


PLAT OF A 118.729 ACRE TRACT FOR SCOTT CREEK ENTERPRISES

Situated in Falls Township, Hocking County, Ohio; being part of Fractional Lot 1 of Section 14, Township 14, Range 17.



REFERENCE BEARING:

South line of Section 14 as North 90 degrees 00 minutes 00 seconds East. Bearings are based upon an assumed meridian and are to denote angles only.

CERTIFICATION:

I hereby certify that an actual survey was made under my supervision of the premises shown hereon on the 11th day of August, 2004 and that the plat is a correct representation of the premises as described by said survey.

Larry P. Gerstner
 Registered Surveyor No. 6344

Survey by: Larry P. Gerstner - Engineering and Surveying
 9 East Second Street, Suite A, Logan, Ohio 43138
 (740) 385-4260

SURVEY DESCRIPTION OF A 118.729 ACRE TRACT FOR SCOTT CREEK ENTERPRISES

Situated in Falls Township, Hocking County, Ohio; being part of Fractional Lot 1 of Section 14, Township 14, Range 17; and being more particularly described as follows:

Commencing for reference at a point at the Southwest corner of Section 14; thence with the South line of Section 14 North 90 degrees 00 minutes 00 seconds East a distance of 1403.38 feet to a 5/8" iron pin found and being the point of **Beginning** of the tract of land to be described;

thence leaving the South line of Section 14 North 0 degrees 40 minutes 33 seconds East a distance of 950.36 feet to a point and passing a 5/8" iron pin set at a distance of 903.98 feet;

thence South 89 degrees 16 minutes 50 seconds West a distance of 380.79 feet to a 2" OD iron pipe found and passing a 5/8" iron pin with 1-1/4" plastic ID cap stamped MPB found at a distance of 75.71 feet;

thence North 22 degrees 42 minutes 29 seconds West a distance of 1836.58 feet to a 2" OD iron pipe found;

thence North 39 degrees 13 minutes 01 second East a distance of 191.23 feet to a 5/8" iron pin set;

thence North 30 degrees 14 minutes 59 seconds West a distance of 321.48 feet to a 5/8" iron pin set;

thence North 89 degrees 18 minutes 59 seconds West a distance of 246.88 feet to a point on the West line of Section 14;

thence with the West line of Section 14 North 0 degrees 29 minutes 13 seconds East a distance of 326.00 feet to a 5/8" iron pin set on the South Right of Way of U. S. Route 33, passing a 5/8" iron pin set at a distance of 20.33 feet and from which a 5/8" iron pin previously set bears North 79 degrees 41 minutes 05 seconds West at a distance of 11.25 feet;

thence leaving the West line of Section 14 and with the South Right of Way of U. S. Route 33 the following six bearings and distances:

1) North 80 degrees 57 minutes 33 seconds East a distance of 1337.18 feet to a 5/8" iron pin set;

2) North 83 degrees 22 minutes 29 seconds East a distance of 450.69 feet to a 5/8" iron pin set;

3) North 70 degrees 43 minutes 57 seconds East a distance of 152.07 feet to a 5/8" iron pin set;

4) North 80 degrees 11 minutes 41 seconds East a distance of 400.00 feet to a 5/8" iron pin set;

5) North 74 degrees 52 minutes 48 seconds East a distance of 372.56 feet to a 5/8" iron pin set;

6) North 77 degrees 57 minutes 39 seconds East a distance of 252.55 feet to a damaged 5/8" iron pin found;

thence leaving the South Right of Way of U. S. Route 33 North 89 degrees 56 minutes 38 seconds East a distance of 1033.66 feet to a point in the Hocking River on the City of Logan Corporation line;

thence with the City of Logan Corporation line South 2 degrees 06 minutes 55 seconds East a distance of 117.79 feet to a point in the center of State Route 93 and passing 5/8" iron pins set at distances of 70.75 feet and 101.27 feet;

thence with the center of State Route 93 the following fifteen bearings and distances:

1) leaving the City of Logan Corporation line South 89 degrees 35 minutes 18 seconds West a distance of 353.27 feet to a point;

2) South 84 degrees 19 minutes 18 seconds West a distance of 261.36 feet to a point;

3) South 74 degrees 25 minutes 11 seconds West a distance of 101.35 feet to a point;

4) South 74 degrees 11 minutes 01 second West a distance of 773.63 feet to a point;

5) South 71 degrees 40 minutes 37 seconds West a distance of 84.41 feet to a point;

6) South 63 degrees 17 minutes 02 seconds West a distance of 61.17 feet to a point;

7) South 54 degrees 56 minutes 42 seconds West a distance of 74.80 feet to a point;

8) South 46 degrees 55 minutes 40 seconds West a distance of 116.48 feet to point;

9) South 45 degrees 31 minutes 49 seconds West a distance of 551.53 feet to a point;

10) South 41 degrees 20 minutes 47 seconds West a distance of 54.41 feet to a point;

11) South 29 degrees 42 minutes 21 seconds West a distance of 34.50 feet to a point;

12) South 15 degrees 21 minutes 06 seconds West a distance of 40.75 feet to a point;

13) South 0 degrees 43 minutes 28 seconds East a distance of 37.33 feet to a point;

14) South 15 degrees 49 minutes 50 seconds East a distance of 60.91 feet to a point;

15) South 22 degrees 26 minutes 20 seconds East a distance of 121.92 feet to a point;

thence leaving the center of State Route 93 South 61 degrees 45 minutes 56 seconds West a distance of 46.60 feet to a 5/8" iron pin set and passing a 5/8" iron pin set at a distance of 30.10 feet;

thence South 36 degrees 22 minutes 56 seconds West a distance of 184.13 feet to a point in Scott Creek;

thence with Scott Creek the following four bearings and distances:

1) South 39 degrees 35 minutes 56 seconds West a distance of 158.52 feet to a point;

2) South 21 degrees 40 minutes 56 seconds West a distance of 204.68 feet to a point;

3) South 54 degrees 35 minutes 04 seconds East a distance of 133.28 feet to a point;

4) South 9 degrees 34 minutes 04 seconds East a distance of 93.46 feet to a point;

thence leaving Scott Creek North 55 degrees 20 minutes 56 seconds East a distance of 87.00 feet to a 5/8" iron pin set;

thence South 64 degrees 04 minutes 05 seconds East a distance of 93.16 feet to a 5/8" iron pin set;

thence North 57 degrees 56 minutes 56 seconds East a distance of 293.51 feet to a point in the center of State Route 93 and passing a 5/8" iron pin set at a distance of 262.00 feet;

thence with the center of State Route 93 South 22 degrees 26 minutes 20 seconds East a distance of 19.99 feet to a point;

thence leaving the center of State Route 93 South 57 degrees 56 minutes 56 seconds West a distance of 332.31 feet to a point in the center of Scott Creek and passing 5/8" iron pins set at distances of 31.55 feet and 288.32 feet;

thence with Scott Creek the following two bearings and distances:

1) South 56 degrees 03 minutes 18 seconds East a distance of 309.39 feet to a point;

2) South 38 degrees 09 minutes 04 seconds East a distance of 284.43 feet to a point;

thence leaving Scott Creek North 67 degrees 40 minutes 56 seconds East a distance of 47.00 feet to a 5/8" iron pin found;

thence crossing State Route 93 North 53 degrees 12 minutes 05 seconds East a distance of 60.89 feet to a 5/8" iron pin previously set;

thence South 21 degrees 59 minutes 04 seconds East a distance of 109.36 feet to a 5/8" iron pin set;

thence South 14 degrees 02 minutes 04 seconds East a distance of 249.15 feet to a 5/8" iron pin set;

thence South 7 degrees 11 minutes 11 seconds West a distance of 809.64 feet to a 5/8" iron pin set from which a 1-1/4" OD iron pipe found bears South 87 degrees 48 minutes 04 seconds East at a distance of 17.78 feet;

thence South 11 degrees 26 minutes 10 seconds West a distance of 496.06 feet to a 5/8" iron pin set, from which a 5/8" iron pin found bears South 82 degrees 07 minutes 54 seconds East at a distance of 28.19 feet;

thence crossing back across State Route 93 South 85 degrees 53 minutes 56 seconds West a distance of 40.93 feet to a 5/8" iron pin found on the South line of Section 14;

thence leaving the South line of Section 14 North 15 degrees 08 minutes 24 seconds East a distance of 62.37 feet to a 5/8" iron pin set;

thence North 7 degrees 51 minutes 03 seconds East a distance of 50.53 feet to a 5/8" iron pin set;

thence South 89 degrees 56 minutes 03 seconds West a distance of 150.23 feet to a 1" iron pin found;

thence South 0 degrees 01 minute 57 seconds East a distance of 110.06 feet to a 5/8" iron pin set on the South line of Section 14;

thence with the South line of Section 14 South 90 degrees 00 minutes 00 seconds West a distance of 642.61 feet to the point of beginning, containing 118.729 acres more or less, and subject to the public easement of State Route 93 and any other public or private easements of record.

The above 118.729 acre survey is intended to describe part of the 264.377 acre surveyed tract as deeded to Bobbie and Janet Davis, Trustees, deed reference Volume OR74, Page 874, Hocking County Recorder's Office. This survey was based upon information obtained from tax maps, deed descriptions, previous surveys, existing monumentation, U. S. 33 Highway plans, and an existing road. The reference bearing for this survey is the South line of Section 14 as North 90 degrees 00 minutes 00 seconds East. Bearings are based upon an assumed meridian and are to denote angles only. All iron pins set by this survey or previously set are 5/8" by 30" and are capped by a 1-1/4" plastic identification cap stamped LPG-6344. The above described property was surveyed by Larry P. Gerstner, Ohio Registered Surveyor No. 6344, on August 11, 2004.

Approved - Mathematically
Hocking County Engineer's Office

BY 14 DATE 8-13-04





Survey by:

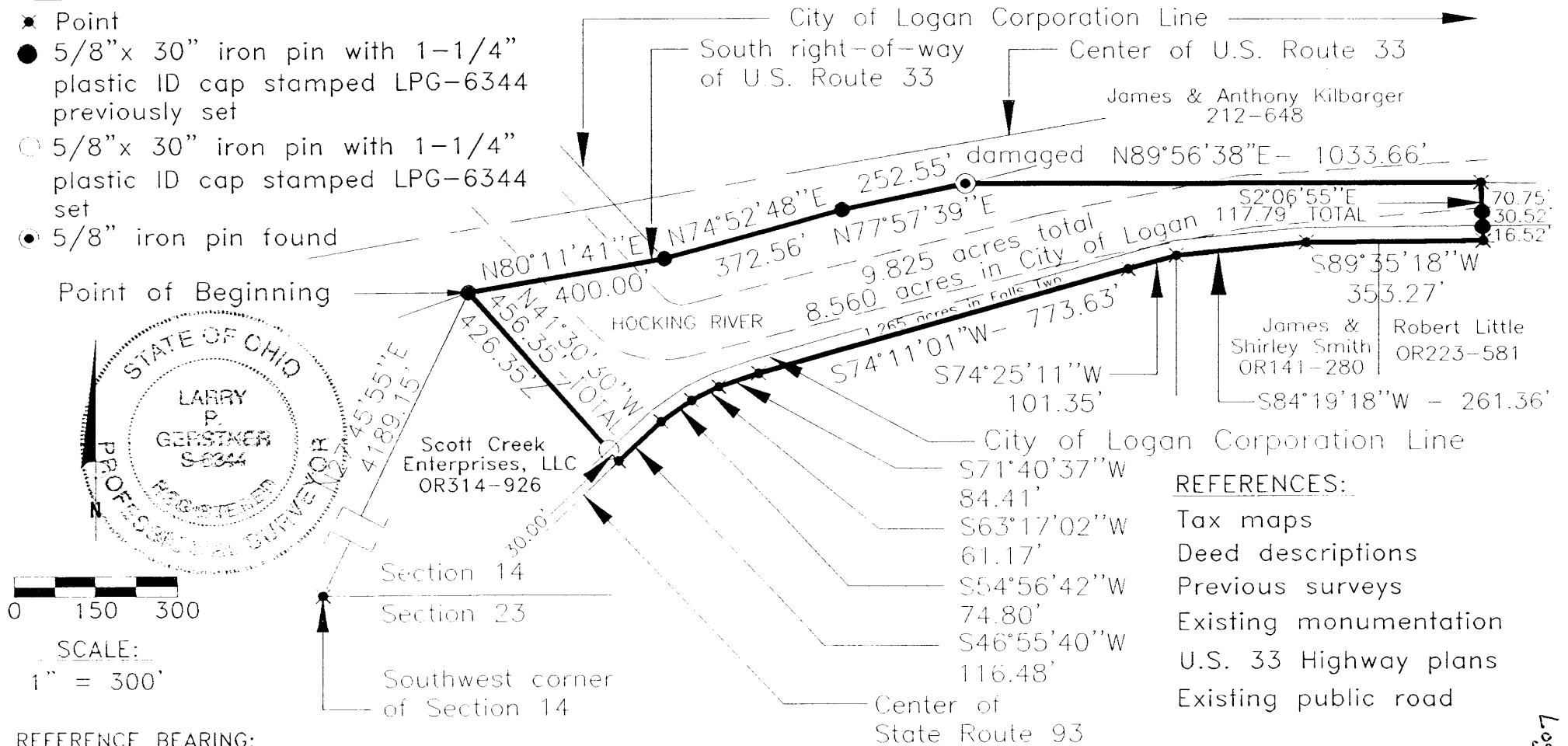
Larry P. Gerstner - Engineering and Surveying
9 East Second Street, Suite A, Logan, Ohio 43138 740-385-4260

PLAT OF A 9.825 ACRE TRACT FOR SCOTT CREEK ENTERPRISES, LLC

Situated in Falls Township, Hocking County, Ohio; being part in the City of Logan; being part of Fractional Lot 1 of Section 14, Township 14, Range 17.

LEGEND

- ✱ Point
- 5/8" x 30" iron pin with 1-1/4" plastic ID cap stamped LPG-6344 previously set
- 5/8" x 30" iron pin with 1-1/4" plastic ID cap stamped LPG-6344 set
- ⦿ 5/8" iron pin found



REFERENCE BEARING:

South line of Section 14 as North 90 degrees 00 minutes 00 seconds East. Bearings are based upon an assumed meridian and are to denote angles only.

CERTIFICATION:

I hereby certify that actual surveys were made under my supervision of the premises shown hereon on the 11th day of August, 2004 and the 4th day of December, 2006 and that the plat is a correct representation of the premises as described by said surveys.

Approved - Mathematically
Hocking County Engineer's Office

EYWB DATE 12-06-06

Survey by: Larry P. Gerstner - Engineering and Surveying
9 East Second Street, Suite A, Logan, Ohio 43138 (740) 385-4260

Larry P. Gerstner
Registered Surveyor No. 6344

Logan City Falls Twp.
Map 67 / Sec. 14
9.560 Ac.

SURVEY DESCRIPTION OF A 9.825 ACRE TRACT FOR SCOTT CREEK ENTERPRISES, LLC.

Situated in Falls Township, Hocking County, Ohio; being part in the City of Logan: being part of Fractional Lot 1 of Section 14, Township 14, Range 17; and being more particularly described as follows:

Commencing for reference at a point at the Southwest corner of Section 14; thence North 27 degrees 45 minutes 55 seconds East a distance of 4189.15 feet to a 5/8" iron pin previously set on the South right of way of U.S. Route 33 and being the point of **Beginning** of the tract of land to be described;

thence with the South right of way of U. S. Route 33 three following three bearings and distances:

1) North 80 degrees 11 minutes 41 seconds East a distance of 400.00 feet to a 5/8" iron pin previously set on the City of Logan Corporation Line;

2) thence with the City of Logan Corporation line North 74 degrees 52 minutes 48 seconds East a distance of 372.56 feet to a 5/8" iron pin previously set;

3) thence continuing with the City of Logan Corporation Line North 77 degrees 57 minutes 39 seconds East a distance of 252.55 feet to a damaged 5/8" iron pin found;

thence leaving the South Right of Way of U. S. Route 33 and continuing with the City of Logan Corporation Line North 89 degrees 56 minutes 38 seconds East a distance of 1033.66 feet to a point in the Hocking River;

thence South 2 degrees 06 minutes 55 seconds East a distance of 117.79 feet to a point in the center of State Route 93 outside of the City of Logan Corporation Line and passing a 5/8" iron pin previously set at a distance of 70.75 feet and a 5/8" iron pin previously set at the City of Logan Corporation Line at a distance of 101.27 feet;

thence with the center of State Route 93 the following eight bearings and distances:

1) South 89 degrees 35 minutes 18 seconds West a distance of 353.27 feet to a point;

2) South 84 degrees 19 minutes 18 seconds West a distance of 261.36 feet to a point;

3) South 74 degrees 25 minutes 11 seconds West a distance of 101.35 feet to a point;

4) South 74 degrees 11 minutes 01 second West a distance of 773.63 feet to a point;

5) South 71 degrees 40 minutes 37 seconds West a distance of 84.41 feet to a point;

6) South 63 degrees 17 minutes 02 seconds West a distance of 61.17 feet to a point;

7) South 54 degrees 56 minutes 42 seconds West a distance of 74.80 feet to a point;

8) South 46 degrees 55 minutes 40 seconds West a distance of 116.48 feet to point;

thence leaving the center of State Route 93 North 41 degrees 30 minutes 30 seconds West a distance of 456.35 feet to the point of beginning, passing a 5/8" iron pin set at a distance of 30.00 feet, containing 9.825 acres more or less, with 8.560 acres being in the City of Logan and 1.265 acres being outside the City of Logan, and subject to the public easement of State Route 93 and any other public or private easements of record.

The above 9.825 acre survey is intended to describe part of the 118.729 acre surveyed tract as deeded to Scott Creek Enterprises, LLC, deed reference Volume OR314, Page 926, Hocking County Recorder's Office. This survey was based upon information obtained from tax maps, deed descriptions, previous surveys, existing monumentation, U. S. 33 Highway plans, and an existing public road. The reference bearing for this survey is the South line of Section 14 as North 90 degrees 00 minutes 00 seconds East. Bearings are based upon an assumed meridian and are to denote angles only. All iron pins set by this survey or previously set are 5/8" by 30" and are capped by a 1-1/4" plastic identification cap stamped LPG-6344. The above described property was surveyed by Larry P. Gerstner, Ohio Registered Surveyor No. 6344, on August 11, 2004 and December 4, 2006.

Approved - Mathematically
Hocking County Engineer's Office

BY LPG DATE 12-06-06



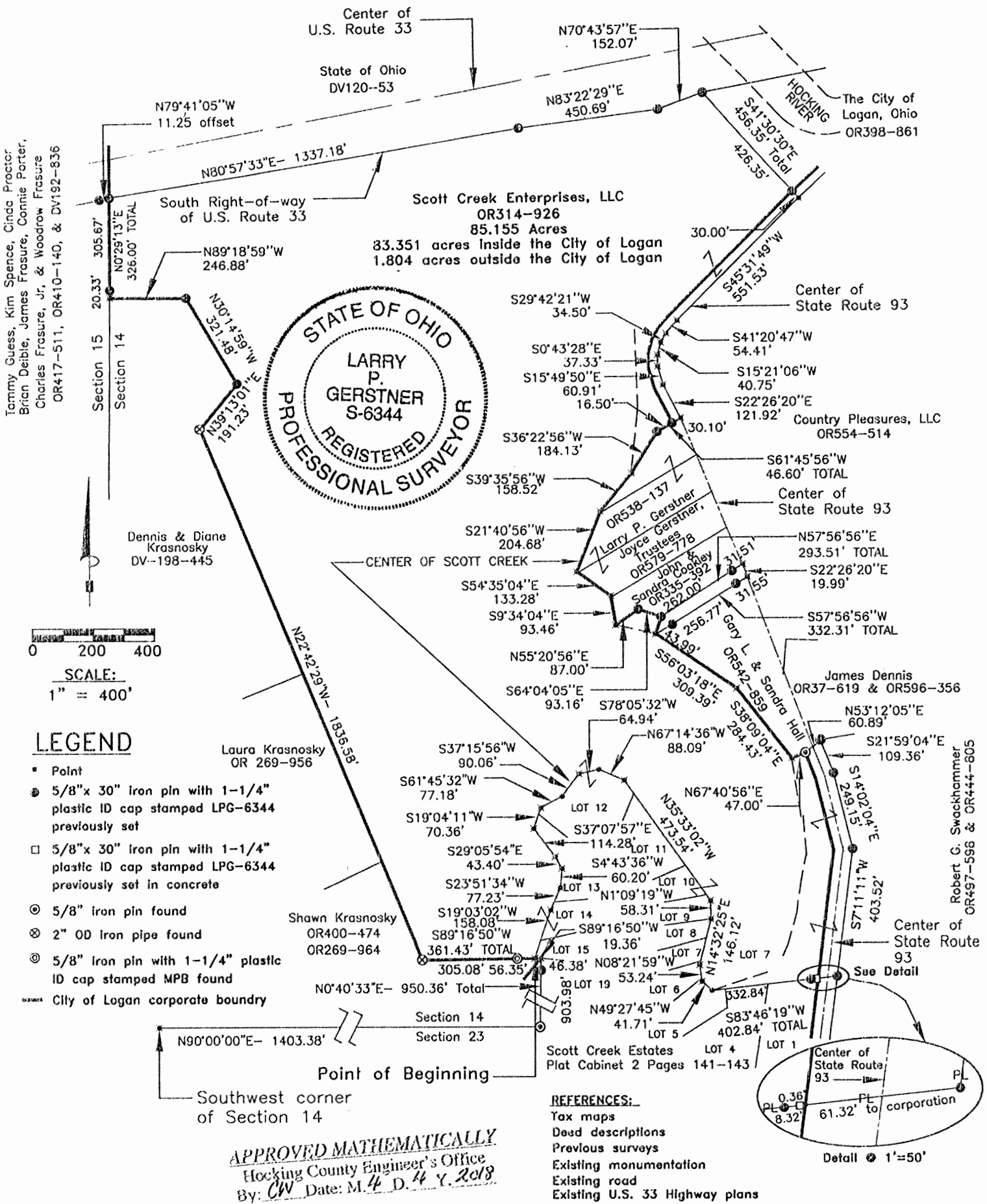
Larry P. Gerstner

Survey by:

Larry P. Gerstner - Engineering and Surveying
9 East Second Street, Suite A, Logan, Ohio 43138 740-385-4260

PLAT OF AN 85.155 ACRE TRACT FOR SCOTT CREEK ENTERPRISES

Situated in Falls Township, Hocking County, Ohio; being part of Fractional Lot 1 of Section 14, Township 14, Range 17; and being partially in the City of Logan.



LEGEND

- Point
- ⊙ 5/8" x 30" Iron pin with 1-1/4" plastic ID cap stamped LPG-6344 previously set
- ⊠ 5/8" x 30" Iron pin with 1-1/4" plastic ID cap stamped LPG-6344 previously set in concrete
- ⊙ 5/8" Iron pin found
- ⊗ 2" OD Iron pipe found
- ⊙ 5/8" Iron pin with 1-1/4" plastic ID cap stamped MPB found
- City of Logan corporate boundary

- REFERENCES:**
- Tax maps
 - Deed descriptions
 - Previous surveys
 - Existing monumentation
 - Existing road
 - Existing U.S. 33 Highway plans

REFERENCE BEARING:

South line of Section 14 as North 90 degrees 00 minutes 00 seconds East. Bearings are based upon an assumed meridian and are to denote angles only.

CERTIFICATION:

I hereby certify that an office survey was made under my supervision of the premises shown hereon on the 26th day March 2018 from actual field surveys completed 11th day of August, 2004 and April 6th, 2006, and that the plat is a correct representation of the premises as described by said surveys.

Larry P. Gerstner
Registered Surveyor No. 6344

Survey by:

Larry P. Gerstner - Engineering and Surveying
11200 State Route 374, Rockbridge, Ohio 43149Z
(740) 385-4260

SURVEY DESCRIPTION OF A 85.155 ACRE TRACT FOR SCOTT CREEK ENTERPRISES

Situated in Falls Township, Hocking County, Ohio; being part of Fractional Lot 1 of Section 14, Township 14, Range 17; being partially in the City of Logan; and being more particularly described as follows:

Commencing for reference at a point at the Southwest corner of Section 14; thence with the South line of Section 14 North 90 degrees 00 minutes 00 seconds East a distance of 1403.38 feet to a 5/8" iron pin found;

thence leaving the South line of Section 14 North 0 degrees 40 minutes 33 seconds East a distance of 950.36 feet to a point in Scott Creek on the corporation boundary of the City of Logan and passing a 5/8" iron pin previously set at a distance of 903.98 feet;

thence with the corporation boundary of the City of Logan South 89 degrees 16 minutes 50 seconds West a distance of 19.36 feet to a point in Scott Creek and being the point of **Beginning** of the tract of land to be described;

thence leaving Scott Creek, with the corporation boundary of the City of Logan and continuing South 89 degrees 16 minutes 50 seconds West a distance of 361.43 feet to a 2" OD iron pipe found and passing a 5/8" iron pin with 1-1/4" plastic ID cap stamped MPB found at a distance of 56.35 feet;

thence North 22 degrees 42 minutes 29 seconds West a distance of 1836.58 feet to a 2" OD iron pipe found;

thence North 39 degrees 13 minutes 01 second East a distance of 191.23 feet to a 5/8" iron pin previously set;

thence North 30 degrees 14 minutes 59 seconds West a distance of 321.48 feet to a 5/8" iron pin previously set;

thence North 89 degrees 18 minutes 59 seconds West a distance of 246.88 feet to a point on the West line of Section 14;

thence with the West line of Section 14 North 0 degrees 29 minutes 13 seconds East a distance of 326.00 feet to a 5/8" iron pin previously set on the South Right of Way of U. S. Route 33, passing a 5/8" iron pin previously set at a distance of 20.33 feet and from which a 5/8" iron pin previously set bears North 79 degrees 41 minutes 05 seconds West at a distance of 11.25 feet;

thence leaving the West line of Section 14 and going into the City of Logan with the South Right of Way of U. S. Route 33 the following three bearings and distances:

1) North 80 degrees 57 minutes 33 seconds East a distance of 1337.18 feet to a 5/8" iron pin previously set;

2) North 83 degrees 22 minutes 29 seconds East a distance of 450.69 feet to a 5/8" iron pin previously set;

3) North 70 degrees 43 minutes 57 seconds East a distance of 152.07 feet to a 5/8" iron pin previously set;

thence leaving the South Right of Way of U. S. Route 33 South 41 degrees 30 minutes 30 seconds East a distance of 456.35 feet to a point in the center of State Route 93 and passing a 5/8" iron pin previously set at the corporation boundary of the City of Logan at a distance of 426.35 feet;

thence with the center of State Route 93 paralleling 30.00 feet outside the City of Logan corporation line the following seven bearings and distances:

1) South 45 degrees 31 minutes 49 seconds West a distance of 551.53 feet to a point;

2) South 41 degrees 20 minutes 47 seconds West a distance of 54.41 feet to a point;

3) South 29 degrees 42 minutes 21 seconds West a distance of 34.50 feet to a point;
4) South 15 degrees 21 minutes 06 seconds West a distance of 40.75 feet to a point;
5) South 0 degrees 43 minutes 28 seconds East a distance of 37.33 feet to a point;
6) South 15 degrees 49 minutes 50 seconds East a distance of 60.91 feet to a point;
7) South 22 degrees 26 minutes 20 seconds East a distance of 121.92 feet to a point;
thence leaving the center of State Route 93 South 61 degrees 45 minutes 56 seconds West a distance of 46.60 feet to a 5/8" iron pin previously set and passing a 5/8" iron pin previously set on the corporation boundary of the City of Logan at a distance of 30.10 feet;

thence with the corporation boundary of the City of Logan South 36 degrees 22 minutes 56 seconds West a distance of 184.13 feet to a point in Scott Creek;

thence with Scott Creek the following four bearings and distances:

1) South 39 degrees 35 minutes 56 seconds West a distance of 158.52 feet to a point;

2) South 21 degrees 40 minutes 56 seconds West a distance of 204.68 feet to a point;

3) South 54 degrees 35 minutes 04 seconds East a distance of 133.28 feet to a point;

4) South 9 degrees 34 minutes 04 seconds East a distance of 93.46 feet to a point;

thence leaving Scott Creek North 55 degrees 20 minutes 56 seconds East a distance of 87.00 feet to a 5/8" iron pin previously set;

thence South 64 degrees 04 minutes 05 seconds East a distance of 93.16 feet to a 5/8" iron pin previously set on the corporation boundary of the City of Logan;

thence leaving the corporation boundary of the City of Logan North 57 degrees 56 minutes 56 seconds East a distance of 293.51 feet to a point in the center of State Route 93 and passing a 5/8" iron pin previously set at a distance of 262.00 feet;

thence with the center of State Route 93 South 22 degrees 26 minutes 20 seconds East a distance of 19.99 feet to a point;

thence leaving the center of State Route 93 South 57 degrees 56 minutes 56 seconds West a distance of 332.31 feet to a point in the center of Scott Creek on the corporation boundary of the City of Logan and passing 5/8" iron pins previously set at distances of 31.55 feet and 288.32 feet;

thence with Scott Creek and the corporation boundary of the City of Logan the following two bearings and distances:

1) South 56 degrees 03 minutes 18 seconds East a distance of 309.39 feet to a point;

2) South 38 degrees 09 minutes 04 seconds East a distance of 284.43 feet to a point;

thence leaving Scott Creek North 67 degrees 40 minutes 56 seconds East a distance of 47.00 feet to a 5/8" iron pin found on the corporation boundary of the City of Logan;

thence leaving the corporation boundary of the City of Logan and crossing State Route 93 North 53 degrees 12 minutes 05 seconds East a distance of 60.89 feet to a 5/8" iron pin previously set;

thence with the East right of way of State Route 93 South paralleling 60.00 feet outside the City of Logan corporation line the following three bearings and distances:

1) South 21 degrees 59 minutes 04 seconds East a distance of 109.36 feet to a 5/8" iron pin previously set;

2) South 14 degrees 02 minutes 04 seconds East a distance of 249.15 feet to a 5/8" iron pin previously set;

3) South 7 degrees 11 minutes 11 seconds West a distance of 403.52 feet to a 5/8" iron pin previously set;

thence leaving the East right of way of State Route 93 South 83 degrees 46 minutes 19 seconds West a distance of 402.84 feet to a point in Scott Creek, passing the corporation line of

the City at a distance of 61.32 feet and going into the City of Logan, passing a 5/8" iron pin previously set in concrete at a distance of 61.68 feet, and passing a 5/8" iron pin previously set at a distances of 70.00 feet;

thence with the center of Scott Creek the following fifteen bearings and distances:

- 1) North 49 degrees 27 minutes 45 seconds West a distance of 41.71 feet to a point;
- 2) North 8 degrees 21 minutes 59 seconds West a distance of 53.24 feet to a point;
- 3) North 14 degrees 32 minutes 25 seconds East a distance of 146.12 feet to a point;
- 4) North 1 degree 09 minutes 19 seconds West a distance of 58.31 feet to a point;
- 5) North 35 degrees 33 minutes 02 seconds West a distance of 473.54 feet to a point;
- 6) North 67 degrees 14 minutes 36 seconds West a distance of 88.09 feet to a point;
- 7) South 78 degrees 05 minutes 32 seconds West a distance of 64.94 feet to a point;
- 8) South 37 degrees 15 minutes 56 seconds West a distance of 90.06 feet to a point;
- 9) South 61 degrees 45 minutes 32 seconds West a distance of 77.18 feet to a point;
- 10) South 19 degrees 04 minutes 11 seconds West a distance of 70.36 feet to a point;
- 11) South 37 degrees 07 minutes 57 seconds East a distance of 114.28 feet to a point;
- 12) South 29 degrees 05 minutes 54 seconds East a distance of 43.40 feet to a point;
- 13) South 4 degrees 43 minutes 36 seconds West a distance of 60.20 feet to a point;
- 14) South 23 degrees 51 minutes 34 seconds West a distance of 77.23 feet to a point;
- 15) South 19 degrees 03 minutes 02 seconds West a distance of 158.08 feet to the point of

beginning, containing 85.155 acres more or less, with 1.804 acres being outside the City of Logan corporation limits and 83.351 acres being inside the City of Logan corporation limits, and subject to the public easement of State Route 93 and any other public or private easements of record.

The above 85.155 acre survey is intended to all the remaining parts of a 118.729 acre survey deeded to Scott Creek Enterprises, LLC, deed reference Volume OR314, Page 926, Hocking County Recorder's Office. This survey was based upon information obtained from tax maps, deed descriptions, previous surveys, existing monumentation, U. S. 33 Highway plans, and an existing road. The reference bearing for this survey is the South line of Section 14 as North 90 degrees 00 minutes 00 seconds East. Bearings are based upon an assumed meridian and are to denote angles only. All iron pins previously set are 5/8" by 30" and are capped by a 1-1/4" plastic identification cap stamped LPG-6344. The above described property was office surveyed by Larry P. Gerstner, Ohio Registered Surveyor No. 6344, on March 26, 2018 from previous actual field surveys completed August 11, 2004 and April 6, 2006.



A handwritten signature in black ink that reads "Larry P. Gerstner".

Survey by:

Larry P. Gerstner - Engineering and Surveying

11200 State Route 374, Rockbridge, Ohio 43149 740-385-4260

APPROVED MATHEMATICALLY
Hocking County Engineer's Office
By: CW Date: M. 4. D. 4. Y. 2018