

RECEIVED IN HOCKING COUNTY, OHIO
 at 9:57 O'CLOCK 9 M
 RECORDED 19
 RECORD LHM VOL. 1 PAGE 1018

50672

WARD 30
 (On County Line)



MAR 18 1982

Donna R. Leach
 RECORDER - HOCKING COUNTY
 LOGAN, OHIO 43138

R9 - 7100-86 (4-4-73) GPO 802-755

CERTIFIED LAND CORNER RESTORATION

State of Ohio }
 County of ... Hocking ... } ss.

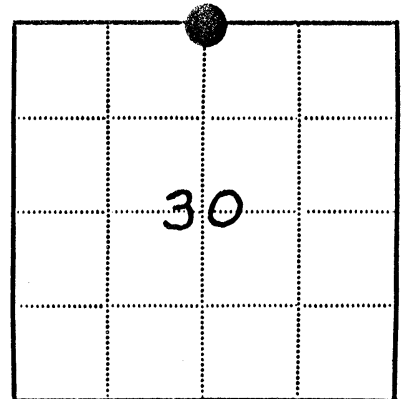
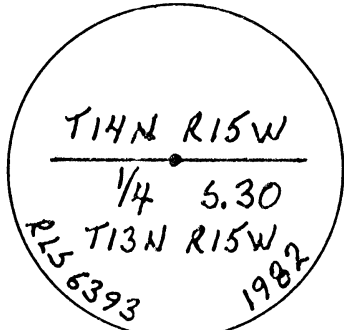
I, Mitchell W. Cosler, do hereby certify that on the 3rd day of March, 1982, I found evidence of the 1/4 Section corner of Section 30 Township 13 North, Range 15 West, Levi Davis, ~~Ohio River~~ Survey, as described hereon; and that from this evidence I established a new monument and accessories as described hereon to perpetuate the ~~original~~ location of this corner:

Description of original monument and accessories and subsequent restorations:
 The original monument and accessories as established by the Levi Davis Survey (Hocking County) in 1869, are unknown. A plat of the survey is filed at the Hocking County Recorder's Office, Book A-4, Page 423. Reference is made to Book 1, Page 275 Hocking County Surveys, filed at the Hocking County Engineer's Office. This survey indicates a tile monument and the following bearing tree stump:
 Hickory Stump
 24"
 East
 3 Feet

Description of corner evidence found:
 In 1981 the U.S.F.S. found a broken tile set at ground level 40 feet west of road at ridgetop and a stump depression 3 feet east of tile.

Description of monument and accessories I established to perpetuate the original location of this corner:
 A 2 1/2" Dia. x 30" concrete filled aluminum pipe, with an aluminum cap stamped as shown below, was set for the corner monument. The corner point was determined by single proportionate measurements from Section Corner for Sections 36 and 30 and from Section Corner for Sections 24 and 30. The following scribed bearing trees and object were established:

Sugar Maple	Chestnut Oak	Broken Tile
10"	5"	4"
S71E	S12W	S38E
13.2 Feet	15.5 Feet	5.3 Feet



● - Corner monument restored
 □ -

Resident witnesses..... J. Graham Snyder

Dated at Dayton, Ohio, this 21st day of July, 1982.

Signature *Mitchell W. Cosler* Title Registered Land Surveyor
 (County Surveyor, Registered Land Surveyor, or other duly authorized official)

Surveyors Registration No. S-6393

Office of.....County of.....
 I hereby certify that the within instrument was filed in this office for record on the.....day of.....19....., and was filed in Book No.....Page No.....of County Records.

Signature.....Title.....

Township 13 North, Range 15 West, Section 30, Index No. A-7, Page No.....

RECEIVED IN HOCKING COUNTY, C
at 10:02 O'CLOCK A.M.
RECORDED 19 1023
RECORD 642 VOL 1 PAGE 1023

50677

WARD 30

MAR 18 1983

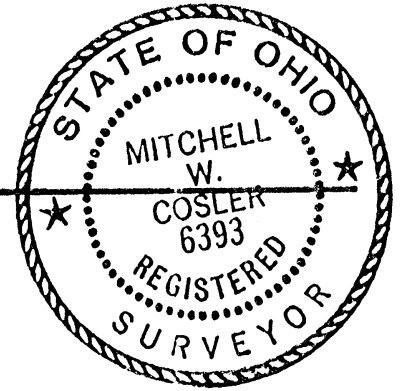
Donna R. Leach

R9-7100-86 (4-4-73)

GPO 802-755

RECORDER - HOCKING COUNTY
LOGAN, OHIO 43138

CERTIFIED LAND CORNER RESTORATION



State of Ohio }
County of Hocking } ss.

I, Mitchell W. Cosler, do hereby certify that on the 3rd day of March, 1982, I found evidence of the C-N 1/16 corner of Section 30 Township 13 North, Range 15 West, Levi Davis Survey, as described hereon; and that from this evidence I established a new monument and accessories as described hereon to perpetuate the original location of this corner:

Description of original monument and accessories and subsequent restorations:
Original monument and accessories, as established by Levi Davis Survey (Hocking County) in 1870, are unknown. A plat of the Levi Davis Survey is filed at the Hocking County Recorder's Office, Book A-4, Page 423.

Subsequent restoration is recorded in Book 1, Pages 274 and 275, Hocking County Surveys, filed at Hocking County Engineer's Office. This 1913 survey notes an iron pipe being present at or near the corner.

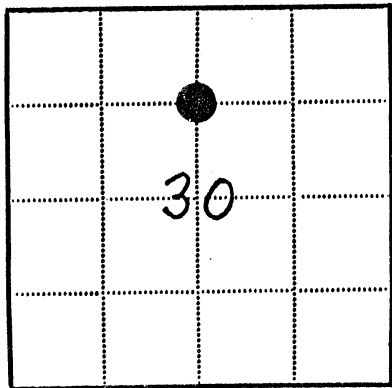
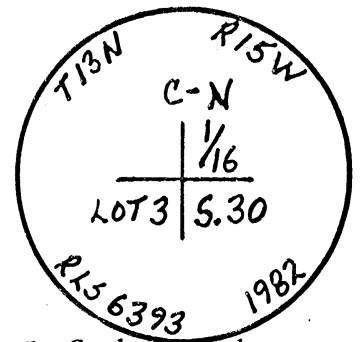
Description of corner evidence found:

Recovered iron pin in 1982. Pin is 1 1/2" in diameter and is 6" above ground level.

Description of monument and accessories I established to perpetuate the original location of this corner:

A 2 1/2" x 30" concrete filled aluminum pipe with an aluminum cap was set for the corner monument. The cap was stamped as shown below. The corner point was determined by single proportionate measurements from the center 1/4 corner and the N1/4 corner. Established the following scribed bearing trees and object.

W. Oak	Chestnut Oak	Iron Pin
9"	9"	1 1/2"
N58W	S8E	S31W
10.7 Ft.	20.9 Ft.	4.5 Ft.



● - Corner monument restored
□ -

Resident witnesses..... J. Graham Snyder

Dated at Dayton Ohio, this 21st day of July, 1982.

Signature Mitchell W. Cosler Title Registered Land Surveyor
(County Surveyor, Registered Land Surveyor, or other duly authorized official)

Surveyors Registration No. S-6393

Office of..... County of.....
I hereby certify that the within instrument was filed in this office for record on the..... day of..... 19....., and was filed in Book No..... Page No..... of County Records.

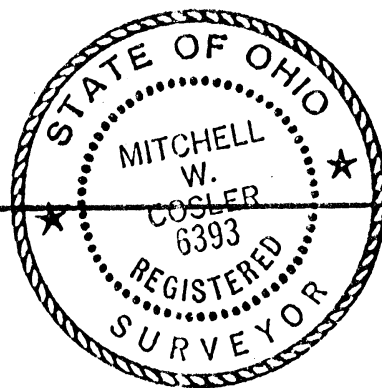
Signature..... Title.....

Township 13 North, Range 15 West, Section 30, Index No. B-7, Page No.....

RECEIVED IN HOCKING COUNTY, OHIO at 10:04 O'CLOCK A M RECORDED 19 7025 RECORD 644 VOL. 1 PAGE

MAR 18 1983

R9-7100-86 (4-4-73) GPO 802-785



Donna R. Leach

RECORDER - HOCKING COUNTY State of Ohio 43138

CERTIFIED LAND CORNER RESTORATION

County of Hocking ss.

I, Mitchell W. Cosler, do hereby certify that on the 3rd day of March, 1982, I found evidence of the Center 1/4 corner of Section 30 Township 13 North, Range 15 West, Levi Davis Survey, as described hereon; and that from this evidence I established a new monument and accessories as described hereon to perpetuate the original location of this corner:

Description of original monument and accessories and subsequent restorations:

Original monument and accessories, as established by Levi Davis Survey (Hocking County) in 1870, are unknown. A plat of the Levi Davis Survey is filed at the Hocking County Recorder's Office, Book A-4, Page 423.

Subsequent restoration is recorded in Book 1, Pages 274 and 275, Hocking County Surveys, filed at Hocking County Engineer's Office. This 1913 Survey notes a stone corner monument being present.

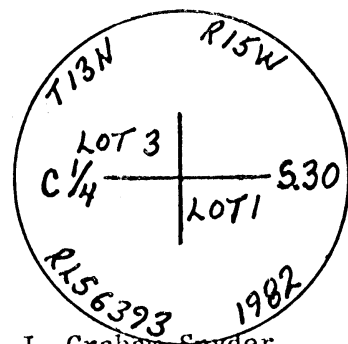
Description of corner evidence found:

Recovered corner stone laying loose on ground a few feet east of fence corner, old fences running east and south.

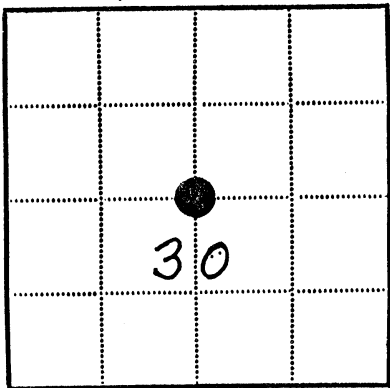
Description of monument and accessories I established to perpetuate the original location of this corner:

A 2 1/2" x 30" aluminum pipe filled with concrete with an aluminum cap was set for the corner monument. The cap was stamped as shown below. Corner point was determined by intersection of lines from opposing quarter corners. The stone was buried beside the corner monument. Established the following bearing trees:

Table with 3 columns: Tree Type, Diameter, Distance. Rows: Beech (20", 27.0 Ft.), Black Cherry (18", 9.0 Ft. (Unscribed)), Ironwood (4", 20.6 Ft.).



Corner is four feet west of drainage bottom.



Legend: ● - Corner monument restored, □ -

Resident witnesses J. Graham Snyder

Dated at Dayton Ohio, this 21st day of July, 1982

Signature Mitchell W. Cosler Title Registered Land Surveyor (County Surveyor, Registered Land Surveyor, or other duly authorized official)

Surveyors Registration No. S-6393

Office of County of

I hereby certify that the within instrument was filed in this office for record on the day of 19, and was filed in Book No. Page No. of County Records.

Signature Title

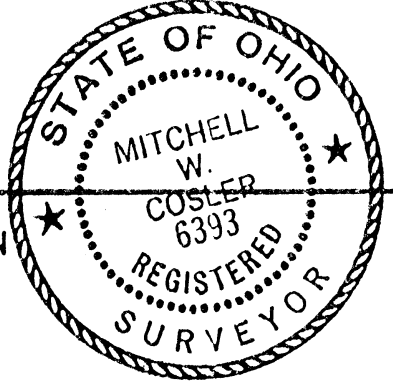
Township 13 North, Range 15 West, Section 30, Index No. C-7, Page No.

WARD 23, 24
29 & 30

RECEIVED IN HOCKING COUNTY, OHIO
9:36 O'CLOCK A.M.
RECORDED 19
RECORD 6393 VOL 1 PAGE 1017

50672

MAR 18 1982



Donna R. Leach
RECORDER - HOCKING COUNTY
LOGAN, OHIO 43138

R9-7100-86 (4-4-73) GPO 802-755

CERTIFIED LAND CORNER RESTORATION

State of Ohio }
County of Hocking } ss.

I, Mitchell W. Cosler, do hereby certify that on the 3rd day of March, 1982, I found evidence of the Section corner of Sections 23, 24, 29 & 30 Township 13 North, Range 15 West, Levi Davis, ~~ONYX RIVER~~ Survey, as described hereon; and that from this evidence I established a new monument and accessories as described hereon to perpetuate the original location of this corner:

Description of original monument and accessories and subsequent restorations:

The original monument and accessories, as established by the Levi Davis Survey (Hocking County) in 1870 are unknown. Plats of the Levi Davis Surveys are filed at the Hocking County Recorder's Office, Book A-4, Pages 422 and 423.

Subsequent Restorations -

1. Sunday Creek Coal Company, Hocking County. Book 1, Page 57, 1923, Stone Monument, 5 bearing trees, and reference pin 153.6 feet west of monument.
2. Numerous U.S. Forest Service acquisition and CCC notes referencing the corner from 1936 and 1937. Stone monument with a wood post beside it and bearing trees were called for. All notes are on file at District Ranger's Office, Athens, Ohio.

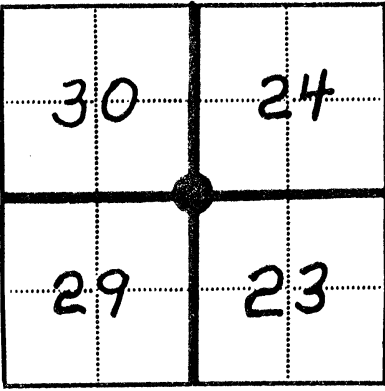
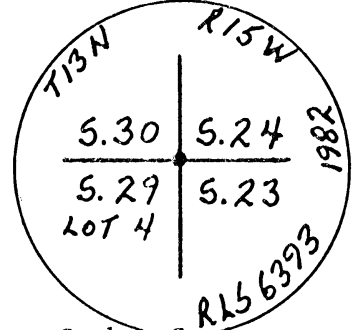
Description of corner evidence found:

The corner position was found to be buried under stripmined talus slope. Recovered the iron pin set by Sunday Creek Coal Company in 1923. Measured distances to the roads north and west and to the creek east are consistent with the USFS notes from 1936 and 1937.

Description of monument and accessories I established to perpetuate the original location of this corner:

A 2 1/2" dia. x 30" concrete filled aluminum pipe with an aluminum cap stamped as shown below was set for the corner monument. The corner position was determined by using the record distance from the iron pin set by Sunday Creek Coal Company in 1923 and the bearing being consistent with the south line of Section 30. The following scribed bearing trees were established:

Sweet Gum	Black Locust	Soft Maple	Tulip Poplar
5"	6"	5"	5"
S80°W	N14°E	S19°E	S85°E
19.9 Feet	9.7 Feet	8.4 Feet	17 Feet



● - Corner monument restored
□ -

Resident witnesses..... J. Graham Snyder

Dated at Dayton Ohio, this 21st day of July, 1982

Signature Mitchell W. Cosler Title Registered Land Surveyor
(County Surveyor, Registered Land Surveyor, or other duly authorized official)

Surveyors Registration No. S-6393

Office of.....County of.....
I hereby certify that the within instrument was filed in this office for record on the.....day of.....19....., and was filed in Book No.....Page No.....of County Records.

Signature.....Title.....

Township 13 North, Range 15 West, Section 23, 24, 29 & 30, Index No. E-9, Page No.....

RECEIVED IN HOCKING COUNTY, OH
 at 9:58 O'CLOCK A.M.
 RECORDED 19
 RECORD 47 VOL. 1 PAGE 1019

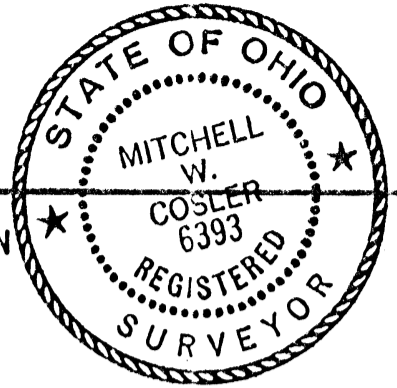
50673

WARD 30+24

MAR 18 1982

Donna R. Leach

R9-7100-86 (4-4-73) GPO 802-758



RECORDER - HOCKING COUNTY
 LOGAN, OHIO 43138

CERTIFIED LAND CORNER RESTORATION

State of Ohio }
 County of Hocking } ss.

I, Mitchell W. Cosler, do hereby certify that on the 3rd day of March, 1982, I found evidence of the 1/4 Section corner of Sections 30 and 24 Township 13 North, Range 15 West, Levi Davis, ~~XXXXXX~~ Survey, as described hereon; and that from this evidence I established a new monument and accessories as described hereon to perpetuate the original location of this corner:

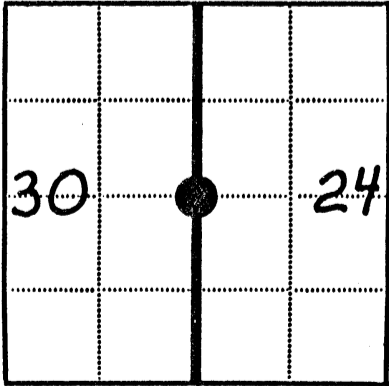
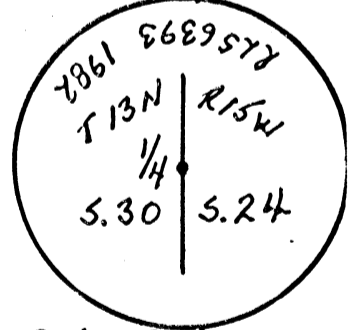
Description of original monument and accessories and subsequent restorations:
 Original monument and accessories, as established by Levi Davis Survey (Hocking County) in 1870 are unknown. A plat of the Levi Davis Survey is filed at the Hocking County Recorder's Office. Book A-4, Page 423.

Description of corner evidence found:
 No corner evidence was found. The corner point is in an old strip mine area and any corner evidence was probably destroyed during the mining activities.

Description of monument and accessories I established to perpetuate the original location of this corner:
 a 2 1/2" Dia. x 30" concrete filled aluminum pipe, with an aluminum cap stamped as shown below, was set for the corner monument. The corner position was determined by single proportionate measurements from section corner of Sections 30 and 24 to Section Corner Sections 23, 24, 29 and 30.

The following scribed bearing trees were established:

Hackberry	Locust	Red Maple
6"	8"	2"
N74°E	N2°E	S74°E
1.6 Feet	13.5 Feet	23.2 Feet
		(Unscribed)



● - Corner monument restored
 □ -

Resident witnesses..... J. Graham Snyder

Dated at Dayton Ohio, this 21st day of July, 1982.

Signature *Mitchell W. Cosler* Title Registered Land Surveyor
 (County Surveyor, Registered Land Surveyor, or other duly authorized official)

Surveyors Registration No. S-6393

Office of.....County of.....
 I hereby certify that the within instrument was filed in this office for record on the.....day of.....19....., and was filed in Book No.....Page No.....of County Records.

Signature.....Title.....

RECEIVED IN HOC. COUNTY, OHIO at 10:00 O'CLOCK A M RECORDED 19 RECORD 642 VOL 1 PAGE 1021

MAR 18 1983

R9-7100-86 (4-4-73)

GPO 802-755

Donna R. Leach

RECORDER - HOCKING COUNTY LOGAN, OHIO 43138

CERTIFIED LAND CORNER RESTORATION



State of Ohio

County of Hocking

ss.

I Mitchell W. Cosler, do hereby certify that on the 3rd day of March, 1982, I found evidence of the N 1/16 corner of Sections 30 and 36 Township 13 North, Range 15 West, Levi Davis, XXXXXXX Survey, as described hereon; and that from this evidence I established a new monument and accessories as described hereon to perpetuate the location of this corner:

Description of original monument and accessories and subsequent restorations:

Original monument and accessories, as established by Levi Davis Survey (Hocking County) in 1869 and 1870, are unknown. Plats of the Levi Davis Surveys are filed at the Hocking County Recorder's Office. Book A-4, Page 423 and Page 428.

Description of corner evidence found:

No evidence of the corner was found other than the intersection of old fence lines from the north, south and west.

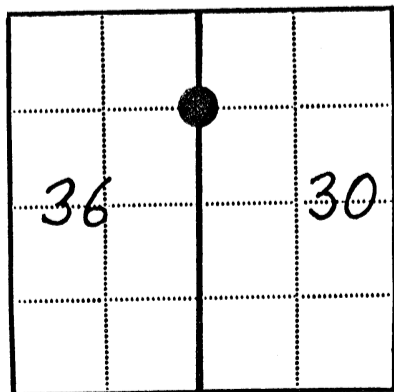
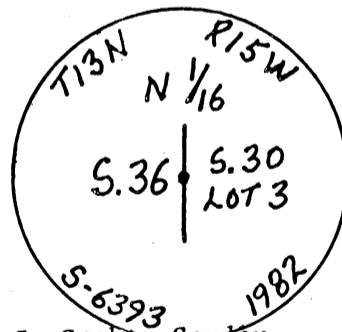
Description of monument and accessories I established to perpetuate the original location of this corner:

A 2 1/2" x 30" aluminum pipe filled with concrete, with an aluminum cap was set for the corner monument. The cap was stamped as shown below. The corner point was determined by single proportionate measurements from corner monuments north and south.

Established the following new bearing tree:

Table with 3 columns: Tree Type, Diameter, Bearing, Distance. Sugar Maple 6" N39W 8.1 Ft., Hackberry 8" S77E 19.2 Ft., Beech 5" S9W 21.4 Ft.

The centerline of a stream is 72 feet east.



Legend: ● - Corner monument restored, □ -

Resident witnesses J. Graham Snyder

Dated at Dayton Ohio, this 21st day of July, 1982

Signature Mitchell W. Cosler Title Registered Land Surveyor (County Surveyor, Registered Land Surveyor, or other duly authorized official)

Surveyors Registration No. S-6393

Office of County of

I hereby certify that the within instrument was filed in this office for record on the day of 19, and was filed in Book No. Page No. of County Records.

Signature Title

Township 13 North, Range 15 West, Section 30 & 36, Index No. B-5, Page No.

RECEIVED IN HOCK COUNTY,
at 10:01 O'CLOCK A M
RECORDED 19
RECORD L 4 M VOL 1 PAGE 1022

MAR 18 1983

Donna R. Leach
RECORDER - HOCKING COUNTY
LOGAN, OHIO 43138

R9 - 7100-86 (4-4-73)

GPO 802-755



CERTIFIED LAND CORNER RESTORATION

State of Ohio }
County of Hocking } ss.

I, Mitchell W. Cosler, do hereby certify that on the 3rd day of March, 1982, I found evidence of the Section corner of Sections 29, 30, 35 and 36 Township 13 North, Range 15 West, Levi Davis, Ohio River Survey, as described hereon; and that from this evidence I established a new monument and accessories as described hereon to perpetuate the original location of this corner:

Description of original monument and accessories and subsequent restorations:

Original monument and accessories, as established by Levi Davis Survey (Hocking County) in 1869 and 1870, are as follows: Monument set - unknown.

Accessories - Plats of the Levi Davis Surveys are filed in the Hocking County Recorder's Office, Book A-4, Pages 422, 423, 427 and 428.
Hickory 20" Hickory 20"
S71W N71E
4 Links 25 Links
Subsequent restoration is recorded in Book 1, Pages 274 and 277 Hocking County Surveys, filed at Hocking County Engineer's Office. The 1913 Survey records a stone corner monument and bearing to Elm, 15", N-W, 16.5 feet.

Description of corner evidence found:

In 1937 the U.S. Forest Service recovered a stone monument, and established the following BT's -
Elm 14" N21W 21 Links
Sassafras 6" S83W 43 Links
Hickory 6" N25E 18 Links

In 1982 the U.S. Forest Service again recovered the corner stone and also the Elm and Hickory bearing trees. The Elm is dead and laying on the ground and is believed to be the Elm called for in 1913.

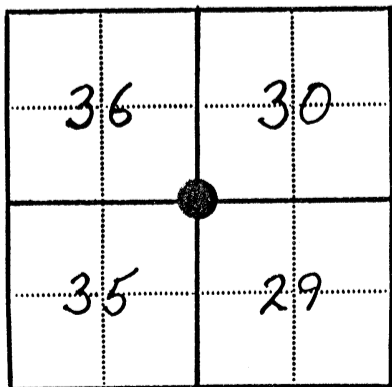
Corner stone is 2" 8" on top with definite +, and 2" above ground level. There are faint st remains three feet W-SW of stone.

Description of monument and accessories I established to perpetuate the original location of this corner:

The stone corner monument was left in place and the following bearing trees were established:

Shagbark	Hickory	Sugar Maple	Sugar Maple (Unscribed)
Hickory 3"	5"	4"	2"
N79E	N30E	N27W	N87W
6.1 Ft.	11.6 Ft.	12.3 Ft.	8.5 Ft.

This corner is eight feet west of a stripmined highwall (20 feet high).



● - Corner monument restored
□ -

Resident witnesses..... J. Graham Snyder

Dated at Dayton, Ohio, this 21st day of July, 1982.

Signature *Mitchell W. Cosler* Title Registered Land Surveyor
(County Surveyor, Registered Land Surveyor, or other duly authorized official)

Surveyors Registration No. S-6393

Office of..... County of.....
I hereby certify that the within instrument was filed in this office for record on the..... day of..... 19....., and was filed in Book No..... Page No..... of County Records.

Signature..... Title.....

Township 13 North, Range 15 West, Section 29, 30, 35 & 36, Index No. E-5, Page No.....

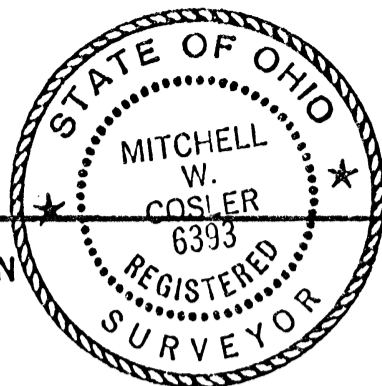
50682

WARD 30436
(On County Line)

RECEIVED IN HOCKING COUNTY, OHIO
at 10:09 O'CLOCK P M
RECORDED 19
RECORD 44 VOL 1 PAGE 1028

MAR 18 1983

R9-7100-86 (4-4-73) GPO 802-785



Donna R. Beach
RECORDER - HOCKING COUNTY
LOGAN, OHIO 43138

CERTIFIED LAND CORNER RESTORATION

State of Ohio }
County of Hocking } ss.

I, Mitchell W. Cosler, do hereby certify that on the 3rd day of March, 1982, I found evidence of the Section corner of Sections 30 and 36 Township 13 North, Range 15 West, Levi Davis, Ohio River Survey, as described hereon; and that from this evidence I established a new monument and accessories as described hereon to perpetuate the original location of this corner:

Description of original monument and accessories and subsequent restorations:

The original monument, as established by the Levi Davis Survey (Hocking County) in 1869, is unknown. A plat of the survey is filed at the Hocking County Recorder's Office, Book A-4, Page 428. The following bearing trees were established:

Hickory	W. Oak
24"	36"
S18W	S5E
37 Links	46 Links

Subsequent restoration, Book 1, Page 275, Hocking County Surveys, filed at Hocking County Engineer's Office. This survey indicates an iron rail monument was present in 1913. The following bearing trees were established:

Chestnut Oak	Ash	Hickory
20"	9"	12"
N80W	N39E	S53W
32 Feet	7.2 Feet	11.6 Feet

Description of corner evidence found:

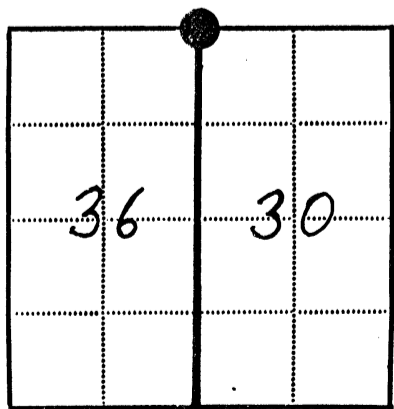
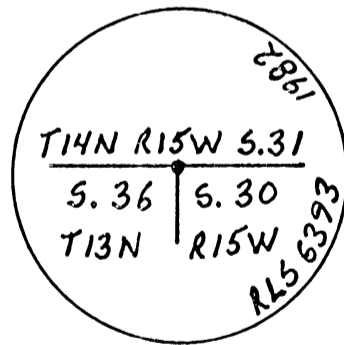
A CCC Survey in 1937 recovered an iron rail monument and a 1913 bearing tree: Hickory 12" S50W 19 Links. In 1981 the USFS recovered the iron rail, old fences running east, west and south and the following bearing trees:

Hickory w/wire	Stump Hole	Large Rotten Stump w/wire
16"	N39E	N80W
S53W	7 Feet	29.8 Feet
11.6 Feet		

Description of monument and accessories I established to perpetuate the original location of this corner:

The iron rail monument was replaced with a 2 1/2" dia. x 30" concrete filled aluminum pipe with an aluminum cap stamped as shown below. The iron rail (24" long) was buried beside the pipe. The following scribed bearing trees were established:

W. Oak	B. Oak	Shagbark Hickory
19"	4"	9"
N59W	S38W	S35E
14.8 Feet	21.2 Feet	15.7 Feet



● - Corner monument restored
□ -

Resident witnesses..... I, Graham Snyder.....

Dated at Dayton Ohio, this 21st day of July, 1982.....

Signature Mitchell W. Cosler Title Registered Land Surveyor
(County Surveyor, Registered Land Surveyor, or other duly authorized official)

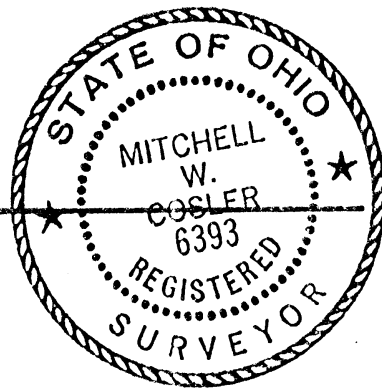
Surveyors Registration No. S-6393.....

Office of..... County of.....
I hereby certify that the within instrument was filed in this office for record on the..... day of..... 19....., and was filed in Book No..... Page No..... of County Records.

Signature..... Title.....

Township 13 North, Range 15 West, Section 30 & 36, Index No. A-5, Page No.....

RECEIVED IN HOCKING COUNTY
at 10:05 AM
RECORDED 1983
RECORD VOL. 1 PAGE 1026



MAR 18 1982

R9-7100-86 (4-4-73) GPO 802-755

Donna R. Cash
RECORDER - HOCKING COUNTY
STATE OF OHIO

CERTIFIED LAND CORNER RESTORATION

County of Hocking } ss.

I, Mitchell W. Cosler, do hereby certify that on the 3rd day of March, 1982, I found evidence of the Lot 8 North Division corner of Section 29 Township 13 North, Range 15 West, Levi Davis Survey, as described hereon; and that from this evidence I established a new monument and accessories as described hereon to perpetuate the original location of this corner:

Description of original monument and accessories and subsequent restorations:

Original monument and accessories as established by Levi Davis Survey (Hocking County) in 1870, are unknown. A plat of the Levi Davis Survey is filed at the Hocking County Recorder's Office, Book A-4, Page 422.

Description of corner evidence found:

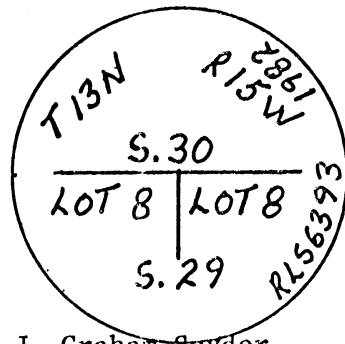
A two inch iron car axle was found in 1982 and adjacent to the axle was a wood post set by the U.S. Forest Service when the land was acquired by the government in 1942. Old fence lines run west and south from corner area.

Description of monument and accessories I established to perpetuate the original location of this corner:

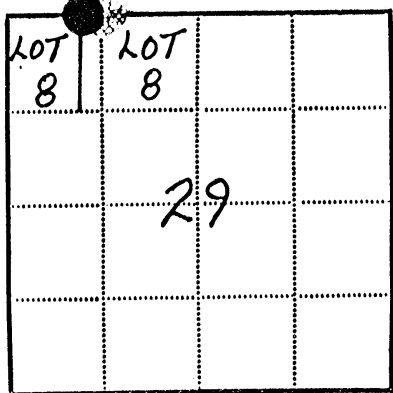
A 2 1/2" x 30" aluminum pipe filled with concrete with an aluminum cap was set for the corner monument. The cap was stamped as shown below. Corner point was determined by single proportionate measurements from section corner 29, 30, 35 and 36 and section corner 23, 24, 29 and 30. Established the following bearing trees:

Yellow Poplar	Buckeye
10"	4"
N30E	S68W
16.2 Ft.	22.4 Ft.

The corner is 60 feet south of a small stream.



WARD 30



● - Corner monument restored
□ -

Resident witnesses..... J. Graham Snyder

Dated at Dayton, Ohio, this 21st day of July, 1982

Signature Mitchell W. Cosler Title Registered Land Surveyor
(County Surveyor, Registered Land Surveyor, or other duly authorized official)

Surveyors Registration No. S-6369

Office of..... County of.....

I hereby certify that the within instrument was filed in this office for record on the..... day of..... 19....., and was filed in Book No..... Page No..... of County Records.

Signature..... Title.....

Township 13 North, Range 15 West, Section 29, Index No. E-5-6, Page No.....

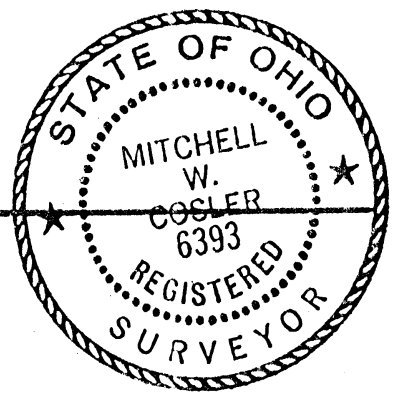
WARD 29 + (30)

50673

RECEIVED IN HOCKING COUNTY, OHIO at 10:03 O'CLOCK A M RECORDED 19 RECORD 641 VOL. 1 PAGE 1024

MAR 18 1983

R9-7100-86 (4-4-73) GPO 802-755



Donna R. Leach

CERTIFIED LAND CORNER RESTORATION

RECORDER - HOCKING COUNTY LOGAN, OHIO 43138 State of Ohio

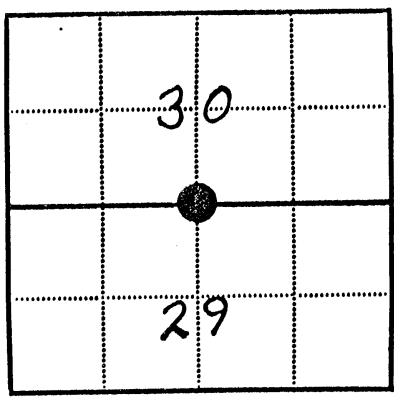
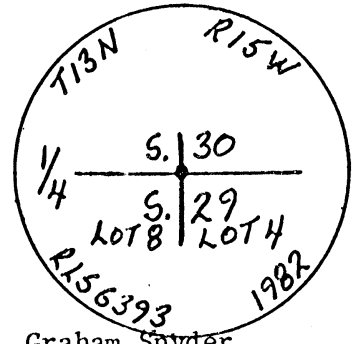
County of Hocking ss.

I, Mitchell W. Cosler, do hereby certify that on the 3rd day of March, 1982, I found evidence of the 1/4 Quarter Section corner of Sections 29 and 30 Township 13 North, Range 15 West, Levi Davis, Ohio River Survey, as described hereon; and that from this evidence I established a new monument and accessories as described hereon to perpetuate the original location of this corner:

Description of original monument and accessories and subsequent restorations: Original monument and accessories, as established by Levi Davis Survey (Hocking County) in 1870, are unknown. Plats of the Levi Davis Survey are filed at the Hocking County Recorder's Office, Book A-4, Pages 422 and 423.

Description of corner evidence found: No corner evidence was found. The corner point is in a reclaimed strip mined area and any corner evidence was likely destroyed during the mining activities.

Description of monument and accessories I established to perpetuate the original location of this corner: A 1/2" x 30" aluminum pipe filled with concrete with an aluminum cap was set for the corner monument. The cap was stamped as shown below. Corner point was determined by single proportionate measurements from section corner 23, 24, 29 and 30 to section corner 29, 30, 35 and 36. No bearing trees or objects were available for use within 100 feet of the corner.



Legend: ● - Corner monument restored □ -

Resident witnesses J. Graham Snyder

Dated at Dayton Ohio, this 21st day of July, 1982.

Signature Mitchell W. Cosler Title Registered Land Surveyor (County Surveyor, Registered Land Surveyor, or other duly authorized official)

Surveyors Registration No. S-6393

Office of County of I hereby certify that the within instrument was filed in this office for record on the day of 19, and was filed in Book No. Page No. of County Records.

Signature Title

Township 13 North, Range 15 West, Section 29 & 30, Index No. E-7, Page No.

RECEIVED IN HOCKING COUNTY, O.
at 9:59 O'CLOCK A M
RECORDED 19
RECORD 441 VOL. 1 PAGE 1020

50674

WARD 30 + 36

MAR 18 1982

Donna R. Leach

R9-7100-86 (4-4-73) GPO 802-755

RECORDER - HOCKING COUNTY
LOGAN, OHIO 43138

CERTIFIED LAND CORNER RESTORATION



State of Ohio }
County of Hocking } ss.

I, Mitchell W. Cosler, do hereby certify that on the 3rd day of March, 1982, I found evidence of the 1/4 Section corner of Sections 30 and 36 Township 13 North, Range 15 West, Levi Davis, Ohio River Survey, as described hereon; and that from this evidence I established a new monument and accessories as described hereon to perpetuate the original location of this corner:

Description of original monument and accessories and subsequent restorations:

Original monument and accessories, as established by Levi Davis Survey (Hocking County) in 1869 and 1870, are as follows:

Monument set - unknown
Accessories -
W. Oak 24"
S83E 10 Lks.
W. Oak 24"
S37 1/2 W 33 Lks.
Plats of the Levi Davis Surveys are filed in the Hocking County Recorder's Office, Book A-4, Page 423 and Page 428.
Reference is made to Book 1, Hocking County Surveys, filed at Hocking County Engineer's Office, Pages 274 and 275. This survey indicates a corner stone monument was present in 1913.

Description of corner evidence found:

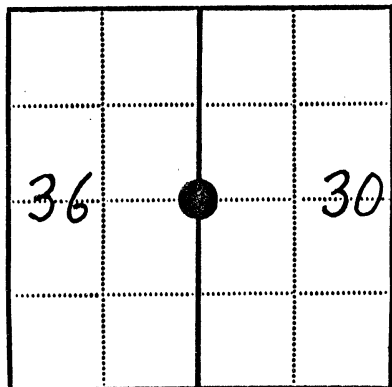
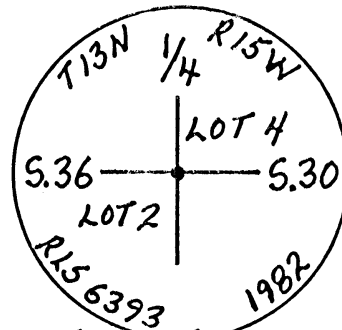
No evidence of the corner stone or bearing trees were found. The corner point is on an old railroad grade and near coal mining activities. Old fence lines run north and south from vicinity of the corner.

Description of monument and accessories I established to perpetuate the original location of this corner:

A 2 1/2" x 30" aluminum pipe filled with concrete with an aluminum cap was set for the corner monument. The cap was stamped as shown below. Corner point was determined by single proportionate measurements from section corners approximately one-half mile northerly and southerly. Established the following scribed bearing trees and objects:

Utility Pole	Sycamore	W.Pine	W.Pine
-	4"	11"	10"
S78E	S22E	N27W	N51W
138.3 Ft.	59.8 Ft.	59.4 Ft.	111.4 Ft.

Centerline of gravel road - south 37 feet
Centerline of stream - west 138 feet



● - Corner monument restored
□ -

Resident witnesses..... J. Graham Snyder

Dated at Dayton, Ohio, this 21st day of July, 1982

Signature *Mitchell W. Cosler* Title Registered Land Surveyor
(County Surveyor, Registered Land Surveyor, or other duly authorized official)

Surveyors Registration No. S-6393

Office of..... County of.....

I hereby certify that the within instrument was filed in this office for record on the..... day of..... 19....., and was filed in Book No..... Page No..... of County Records.

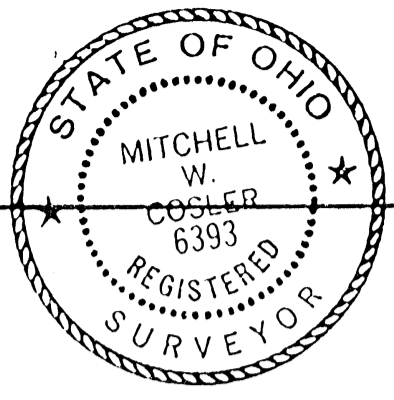
Signature..... Title.....

Township 13 North, Range 15 West, Section 30 & 36, Index No. C-5, Page No.....

Ward 24#30

55238

R9 - 7100-86 (4-4-73) GPO 802-755



CERTIFIED LAND CORNER RESTORATION

State of Ohio }
County of Hocking } ss.

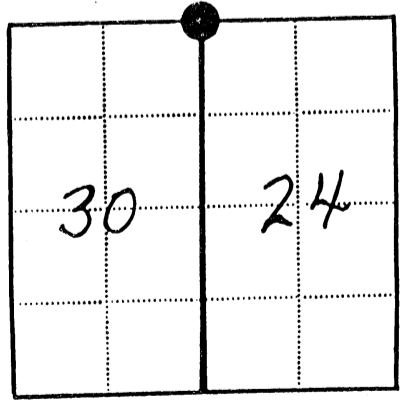
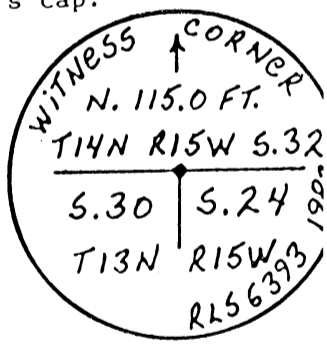
I, Mitchell W. Cosler, do hereby certify that on the 3rd day of March, 1982, I found evidence of the Section corner of Sections 30 and 24 Township 13 North Range 15 West Levi Davis Survey, as described hereon: and that from this evidence I established a new monument and accessories as described hereon to perpetuate the original location of this corner:

Description of original monument and accessories and subsequent restorations:
Original monument and accessories, as established by Levi Davis Survey (Hocking County) in 1870 are unknown. A plat of the Levi Davis Survey is filed at the Hocking County Recorder's Office, Book A-4, Page 423. Reference is made to Book 1, Hocking County Surveys, filed at the Hocking County Engineer's Office, Page 275. This survey indicates a corner stone and a tile monument were present in 1913.

Description of corner evidence found:
Corner point is under water in a strip mine/Beaver Pond, therefore, no corner evidence was recovered. Corner point is supported by U.S. Forest Service acquisition field notes from 1936 and 1937 which call for a stone monument in place. The notes call for tile monuments on the line at 562.32 feet east and 1049.40 feet west. Both tiles were recovered in 1982 at 563.14 and 1045.09 feet respectively.

Description of monument and accessories I established to perpetuate the original location of this corner:
A witness corner was set on the Section Line between Sections 30 and 24. It is a 2 1/2" Dia. 30" concrete filled aluminum pipe with an aluminum cap. The pipe is set 24" into the ground with a few rocks piled around the cap and is 16 feet south and 8 feet east of a high wall on the easterly side of the pond. There is a magnet under the monument's cap. The following bearing trees were established:

Shagbark Hickory	American Elm
2 1/2"	3"
S 32 W	S 42 W
10.7 Ft.	6.7 Ft.



● - Corner monument restored
□ -

Resident witnesses..... J. Graham Snyder
Dated at Dayton Ohio, this 21st day of July, 1982.
Signature Mitchell W. Cosler Title Registered Land Surveyor
(County Surveyor, Registered Land Surveyor, or other duly authorized official)
Surveyors Registration No. S-6393
Office of No Recorder County of Hocking
I hereby certify that the within instrument was filed in this office for record on the 4th day of June, 1984, and was filed in Book No. 2 Page No. 359 of County Records.

Signature..... Title.....

Township 13 North Range 15 West Section 24 & 30 Index No. A-9 Page No.....

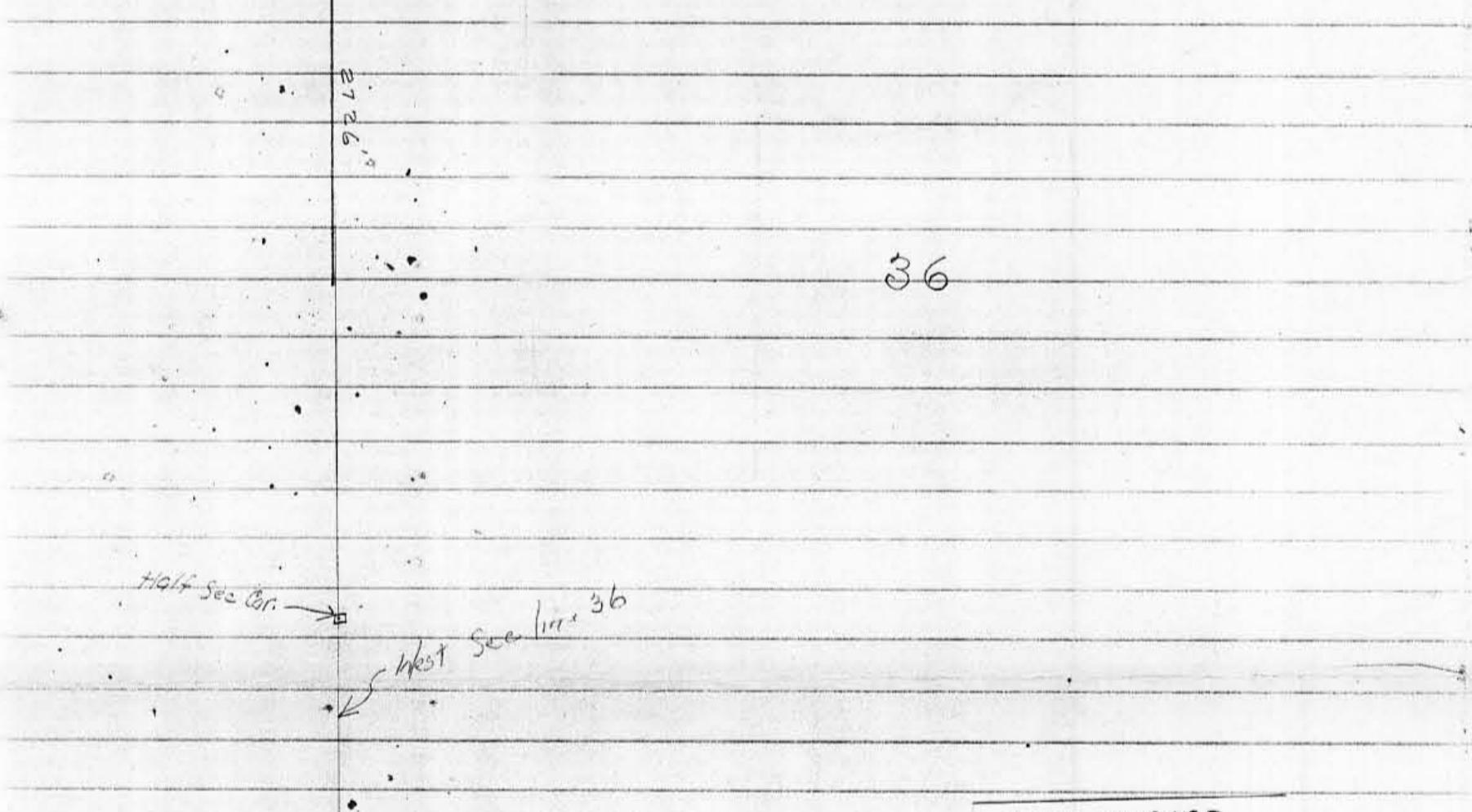
Mag. 1909.
 15' Elm S73°W 8'
 12' " Stump N26°E 12.2' } orig witness
 12' Hickory S85°W 15.5'
 8' Walnut N27°E 19.3'
 13' Mulberry N1/2°E 25.7' } New Witness

Mag. 1914
 12' Elm S88°E 12.5'

Mag. 1914
 12' Elm S85°E 12.5'

Stone 8578
 Stone 2829

Ward T.P.



36

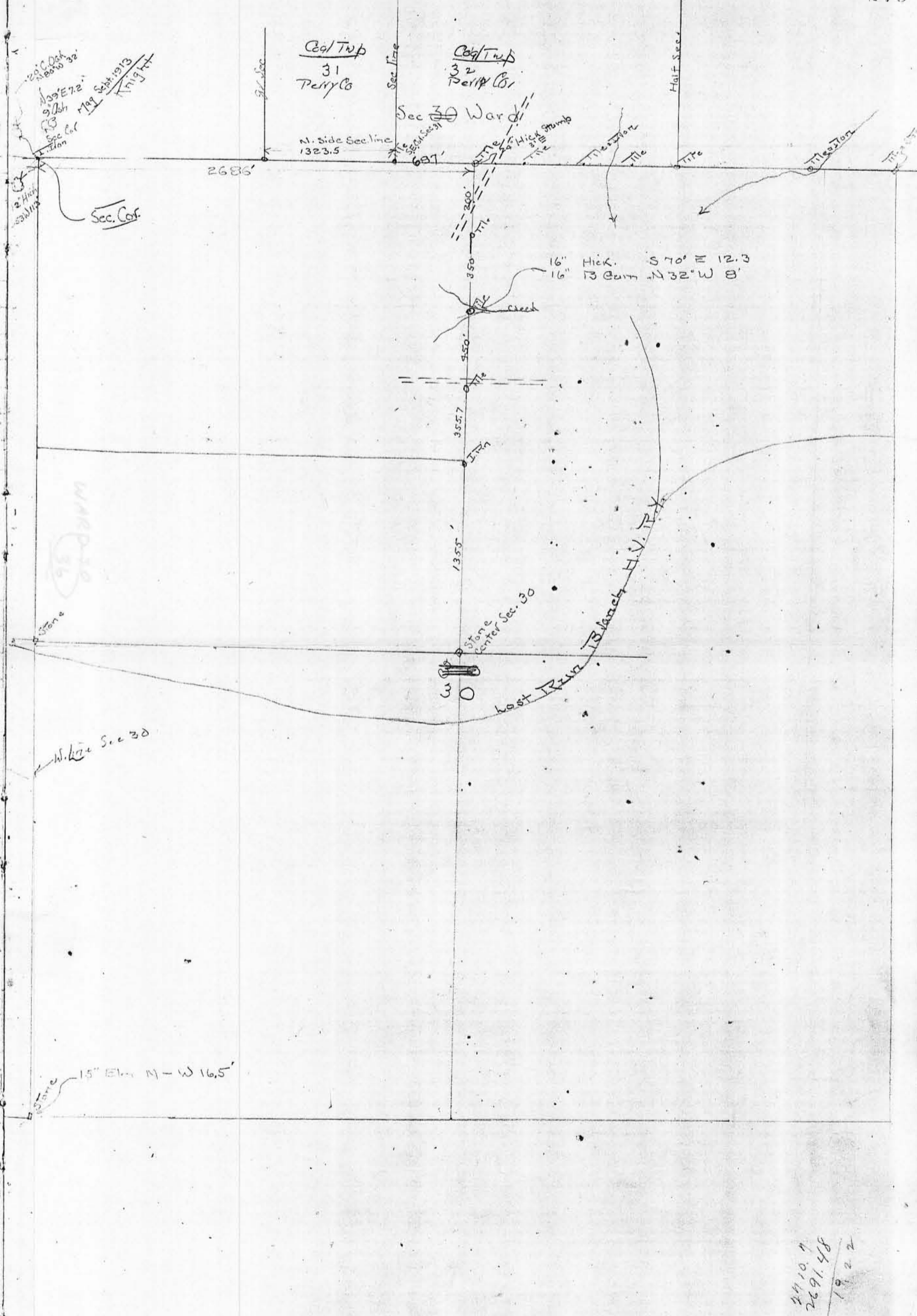
FROM RECORD
 OF SURVEYS BOOK
 #1 PAGE 274+275
 HOCKING COUNTY
 ENGINEERS
 OFFICE

Witness
 15' Mulberry
 N22°W 6.2'
 12' Maple
 S25°W 11.5'

Stone 1164
 Stone 6493

Sec. Cor.
 1110 Stone

90'



2410.7
 2691.48
 1922

WD30-014
ACQUISITION

Oakley, R.V.

H.V. 1138e

DEPARTMENT OF AGRICULTURE
FOREST SERVICE
FIELD MAP SHEET

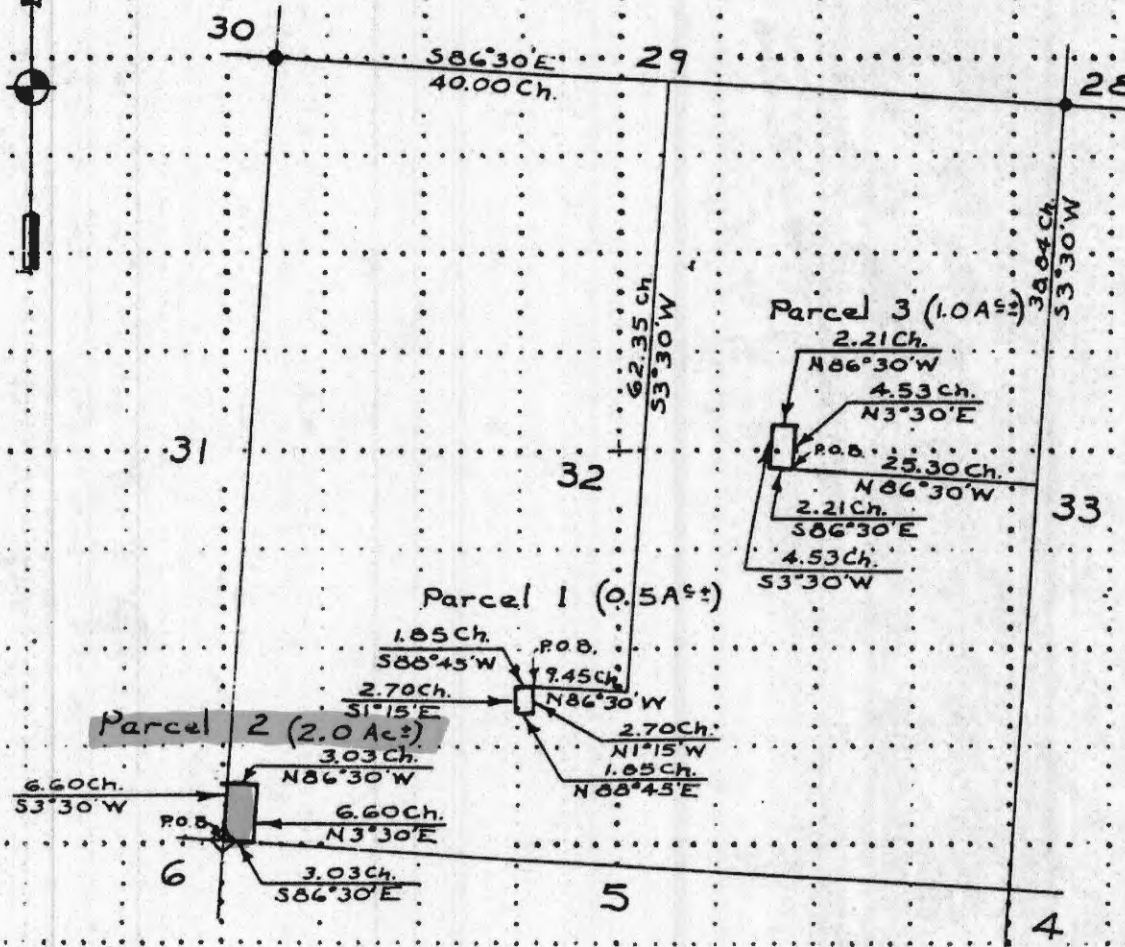
Perry County

Scale 4 inches = 1 mi

2.0 Ac.

T. 14N. R. 15W. Sec. 32

Unit Wayne-Hoosier (Perry Co.) Mag. Dec. 2°00'W Acres 3.5



Legend

- P.O.B. Point of Beginning
- Iron Pin
- ◇ Tile Monument

Printed From Perry County Web Site 2018

Work by WM. GRAF

Date 6-4-36

Platted by Moore, R.S.

ks

pr

NTM

19

Approved