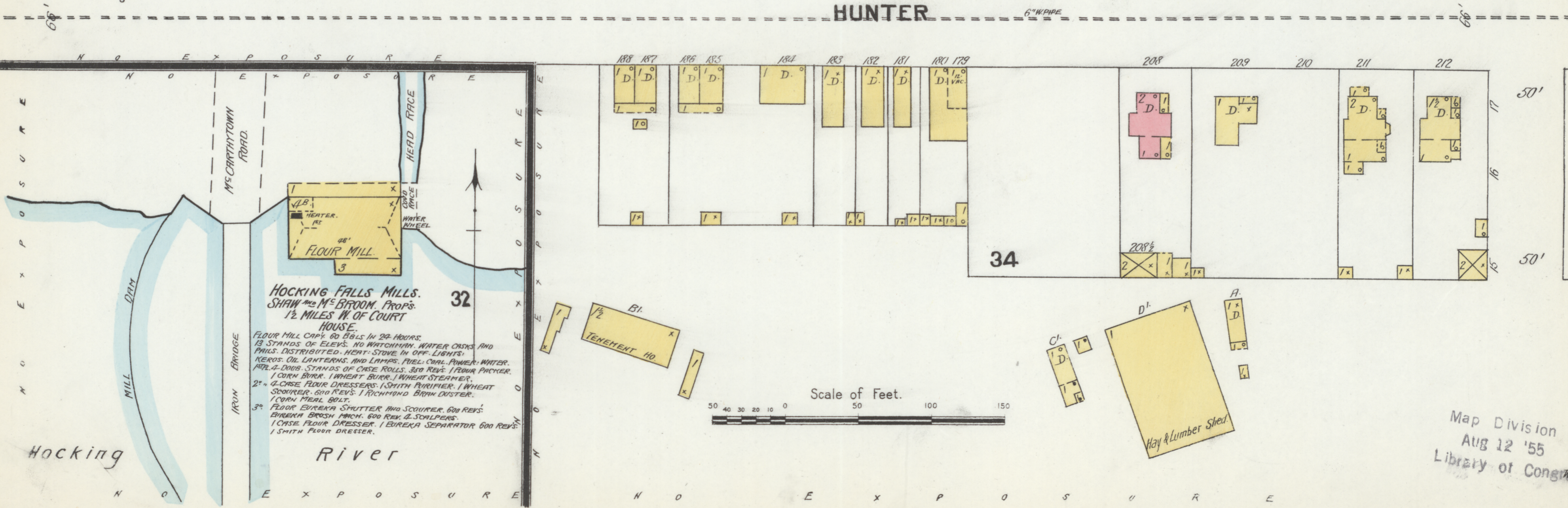
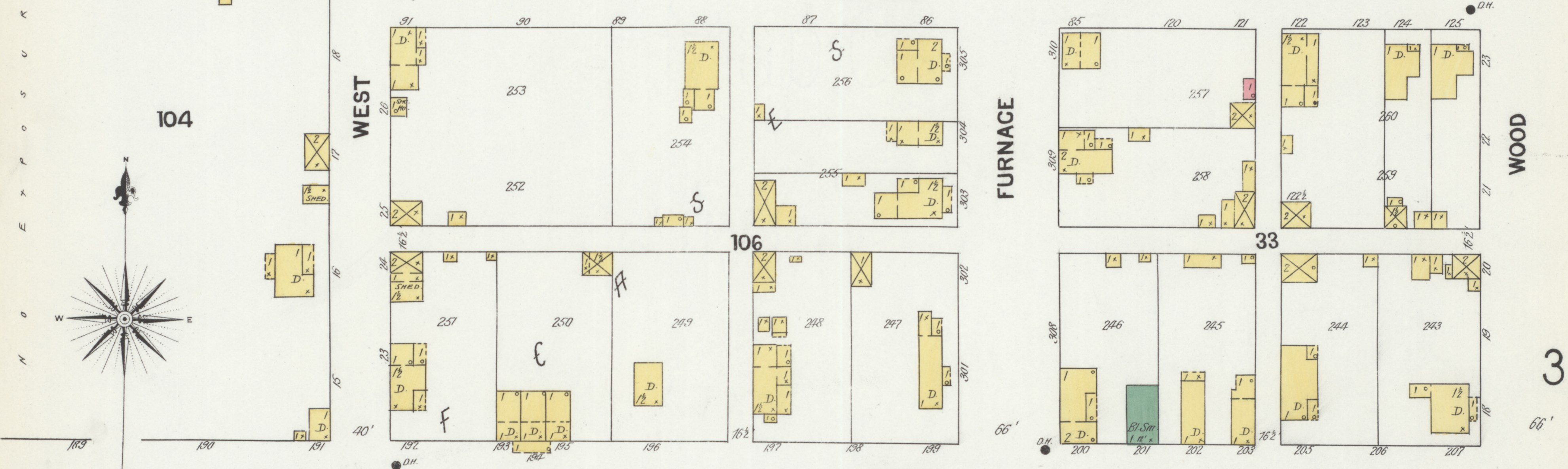
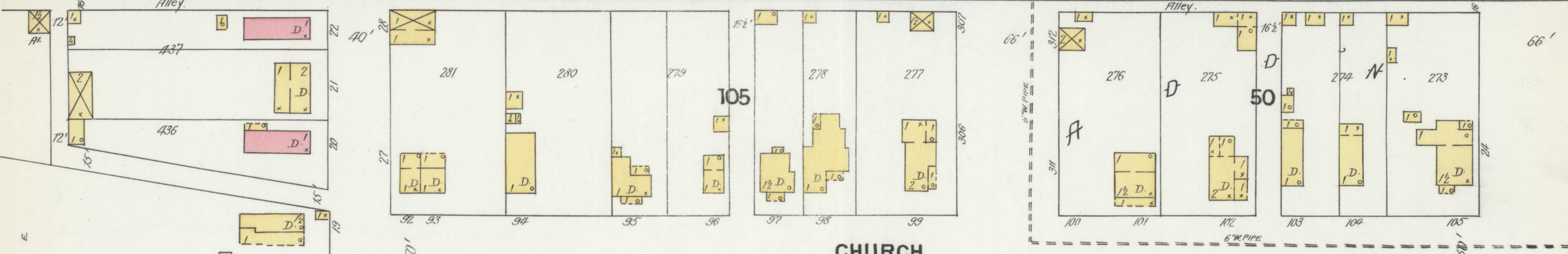
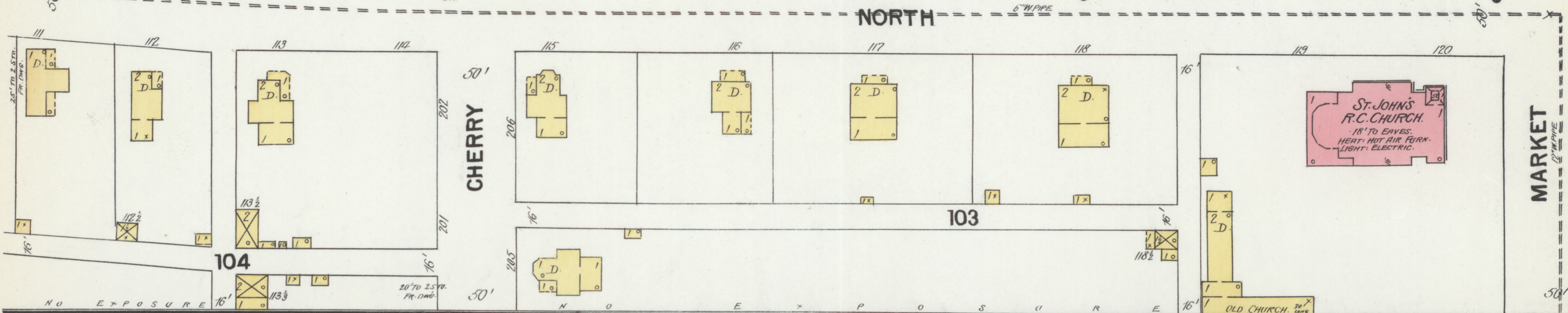
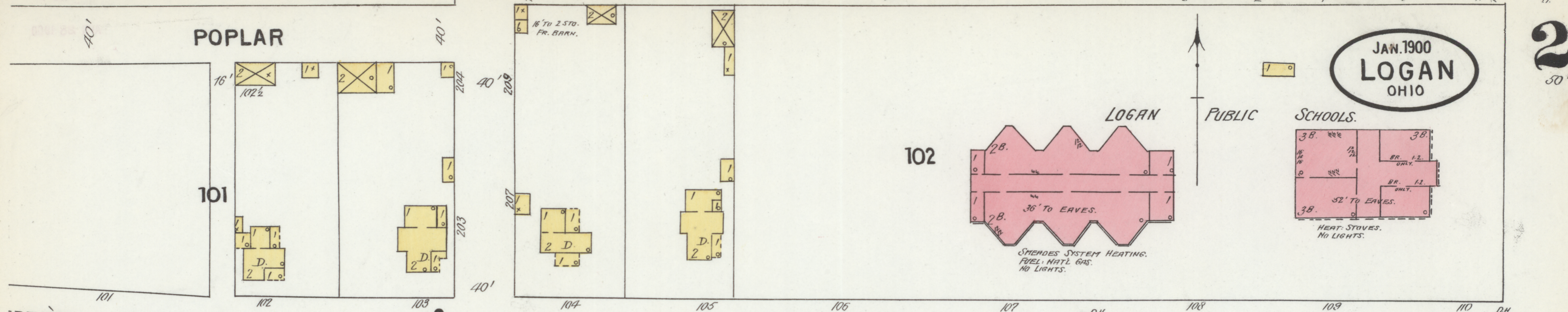


JAN. 1900
LOGAN
OHIO

2
50'



HOCKING FALLS MILLS.
SHAW & M^{rs} BROOM. Prop's.
1/2 MILES W. OF COURT
HOUSE.

FLOUR MILL CAP'Y 60 BLS. IN 24 HOURS.
13 STANDS OF ELEV'S. NO WATCHMAN. WATER CRDS. AND
PRGS. DISTRIBUTED. HEAT- STOVE IN OFF. LIGHTS.
KESOS. OIL. LANTERNS. AND LAMP. FUEL. OIL. POWER. WATER.
MIL & DRY. STANDS OF CASE ROLLS. 300 REVS. 1 FEEDER. PAPER.
1 CORN BRKR. 1 WHEAT BRKR. 1 WHEAT STEAMER.
2" G. CASE. FIVE CRUSERS. 1 SMTH. BRUIER. 1 WHEAT
SCOURER. 300 REVS. 1 RICHMOND. BRAN DUSTER.
1 CORN MEAL GR. 1
FLOUR. 2 BUREKA SCRUTTER AND SCOURER. 300 REVS.
BUREKA BRUSH MACH. 600 REVS. 2 SCALPERS.
1 CASE. FLOUR DRESSER. 1 BUREKA SEPARATOR 600 REVS.
1 SMTH. FLOUR DRESSER.

Scale of Feet.
0 10 20 30 40 50 60 70 80 90 100 110 120 130 140 150

Map Division
AUG 12 '55
Library of Congress