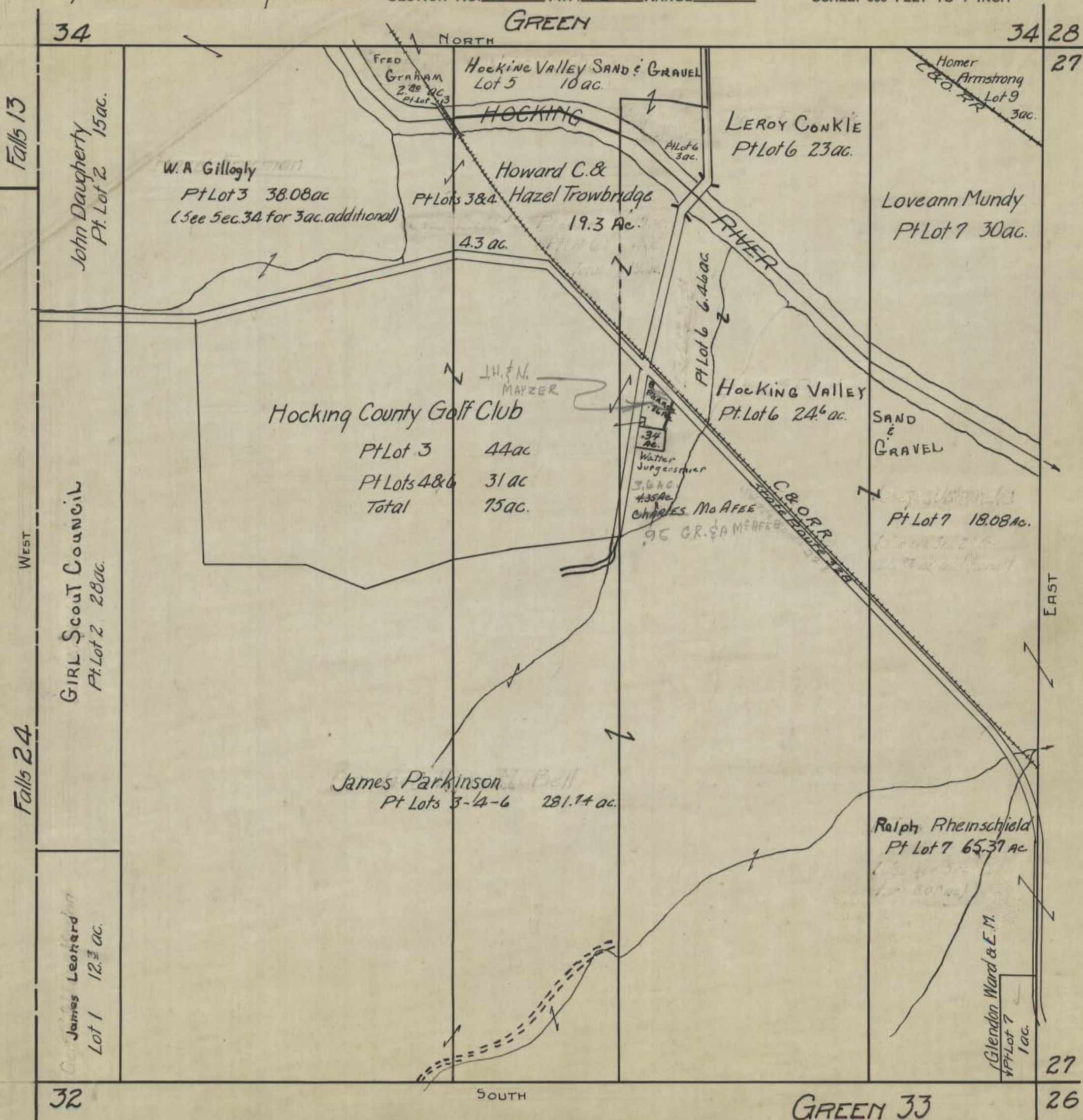


Prepared from Air Photo Aug 1942 AWS.

HOCKING COUNTY STATE OHIO
SECTION No. 33 TWP. 13 RANGE 16

SCALE: 500 FEET TO 1 INCH



34

34 28

Falls 13

27

John Daugherty
Pt. Lot 2 15ac.

W.A Gillogly
Pt Lot 3 38.08ac
(See Sec. 34 for 3ac. additional)

Hocking Valley Sand & Gravel
Lot 5 10ac.

LEROY CONKIE
Pt Lot 6 23ac.

Homer
Armstrong
C&O RR Lot 9
3ac.

Howard C. &
Hazel Trowbridge
Pt Lots 3 & 4
19.3 Ac.

Loveann Mundy
Pt Lot 7 30ac.

Hocking County Golf Club

Pt Lot 3	44ac
Pt Lots 4 & 6	31ac
Total	75ac.

HOCKING VALLEY
Pt. Lot 6 24.6 ac.

SAND & GRAVEL

GIRL SCOUT COUNCIL
Pt. Lot 2 28ac.

Walter
Jurgenshauer
3.6 ac
4.35 ac
CHARLES MO A FEE
95 GR. & A M A FEE

Pt Lot 7 18.08 ac.

WEST

EAST

Falls 24

James Parkinson
Pt Lots 3-4-6 281.74 ac.

Ralph Rheinschield
Pt Lot 7 65.37 ac

James Leonard
Lot 1 12.3 ac.

Glendon Ward & E.M.
Pt Lot 7
1 ac.

32

SOUTH

GREEN 33

27

26