

A.W.S. Original Feb 13 1939

HOCKING COUNTY STATE OHIO

SECTION No. 5 TWP. 12 RANGE 19

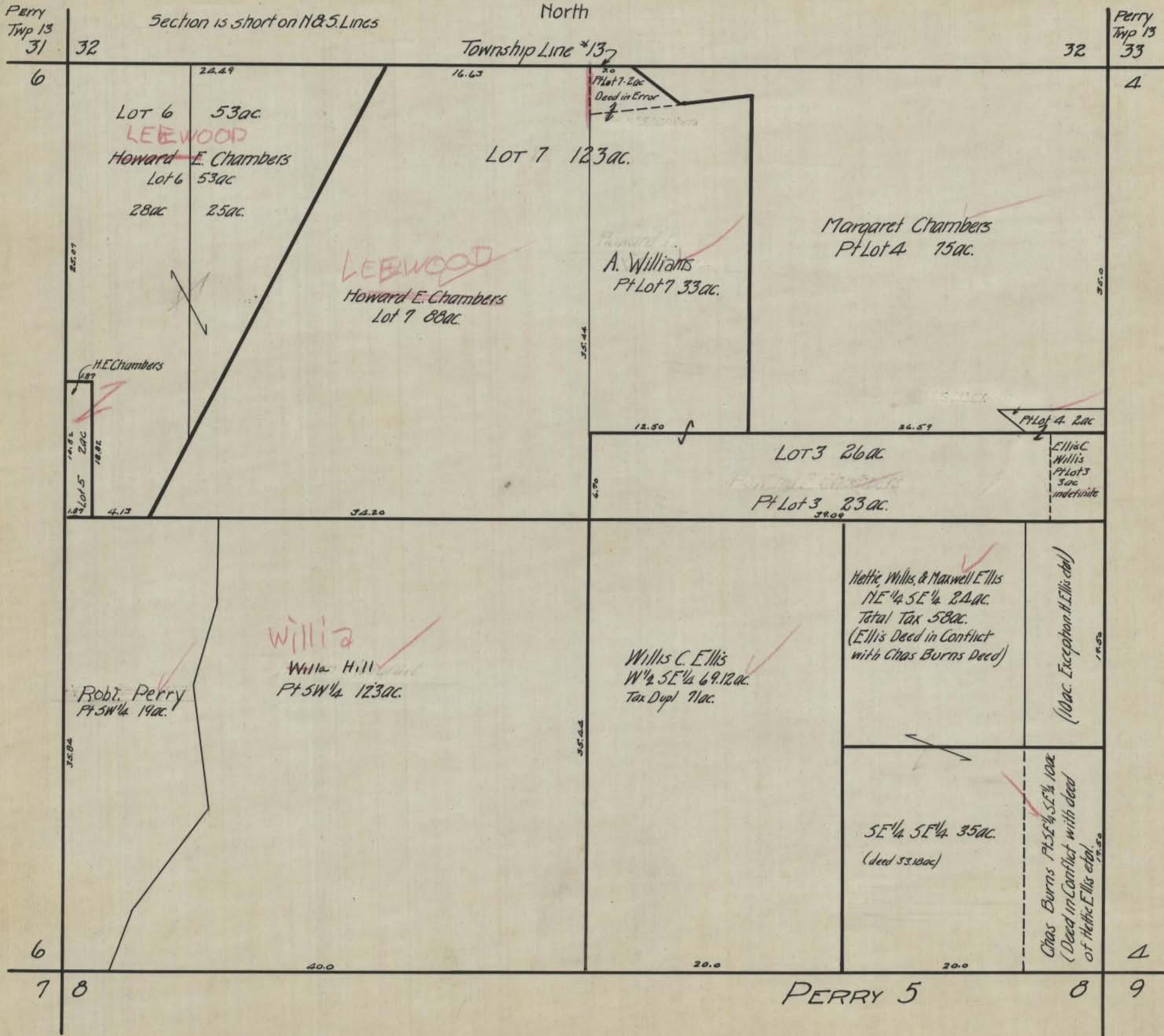
SCALE: 500 FEET TO 1 INCH

PERRY

North

Section is short on N&S Lines

Township Line \*137



6

32

32

Perry Twp 13 33

4

LOT 6 53ac.  
LEEWOOD  
Howard E. Chambers  
Lot 6 53ac

LOT 7 123ac.

Margaret Chambers  
Pt Lot 4 15ac.

LEEWOOD  
Howard E. Chambers  
Lot 7 88ac.

A. Williams  
Pt Lot 7 33ac.

LOT 3 26ac

Pt Lot 3 23ac.

Ellis C. Willis  
Pt Lot 3  
3ac  
indefinite

H.E. Chambers

18.82  
18.82  
18.82  
18.82  
18.82

Willia  
Willia Hill  
Pt SW 1/4 123ac.

Robt. Perry  
Pt SW 1/4 19ac.

Willis C. Ellis  
W 1/2 SE 1/4 69.12ac.  
Tax Dupl 71ac.

Hettie Willis & Maxwell Ellis  
NE 1/4 SE 1/4 24ac.  
Total Tax 58ac.  
(Ellis Deed in Conflict  
with Chas Burns Deed)

(10ac. Exception H. Ellis et al)

SE 1/4 SE 1/4 35ac.  
(Deed 53.10ac)

Chas Burns Pt SE 1/4 SE 1/4 10ac  
(Deed in Conflict with deed  
of Hettie Ellis et al.)

6

8

8

Perry Twp 13 33

4

PERRY 5

7

9