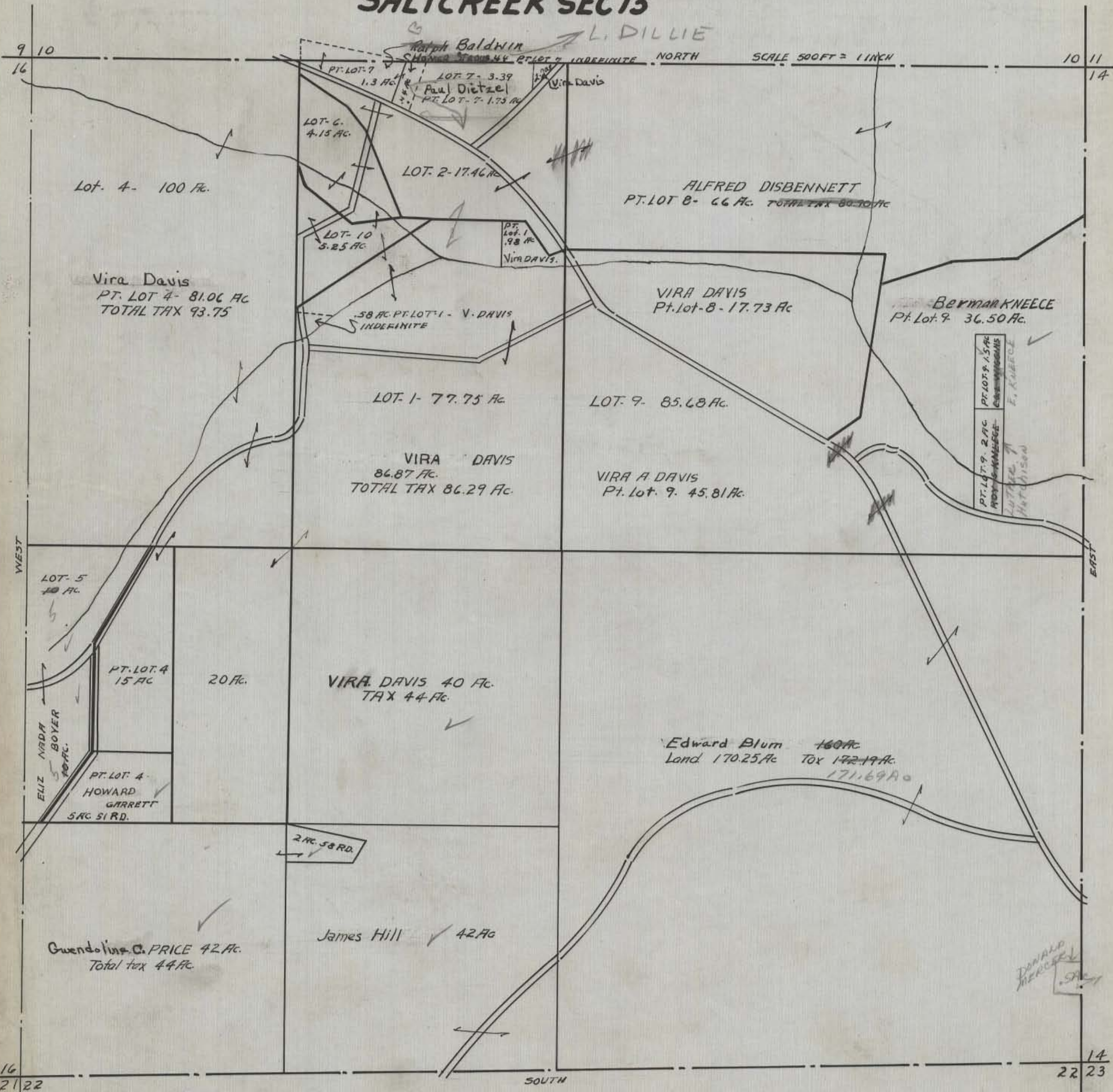


HOCKING COUNTY STATE OHIO

SEC 15 TWP. 11 RANGE 19

SALTCREEK SEC 15



SCALE 500 FT = 1 INCH

ALFRED DISBENNETT
PT. LOT 8 - 66 AC. TOTAL TAX 80.10 AC

Lot. 4 - 100 AC.

Vira Davis
PT. LOT 4 - 81.06 AC
TOTAL TAX 93.75

VIRA DAVIS
84.87 AC.
TOTAL TAX 86.29 AC.

VIRA A DAVIS
Pt. Lot. 9. 45.81 AC.

Bermark KNEECE
Pt. Lot. 9. 36.50 AC.

Edward Blum 160 AC
Land 170.25 AC Tax 172.19 AC
171.69 AC

James Hill 42 AC

Guendolina C. PRICE 42 AC.
Total tax 44 AC.