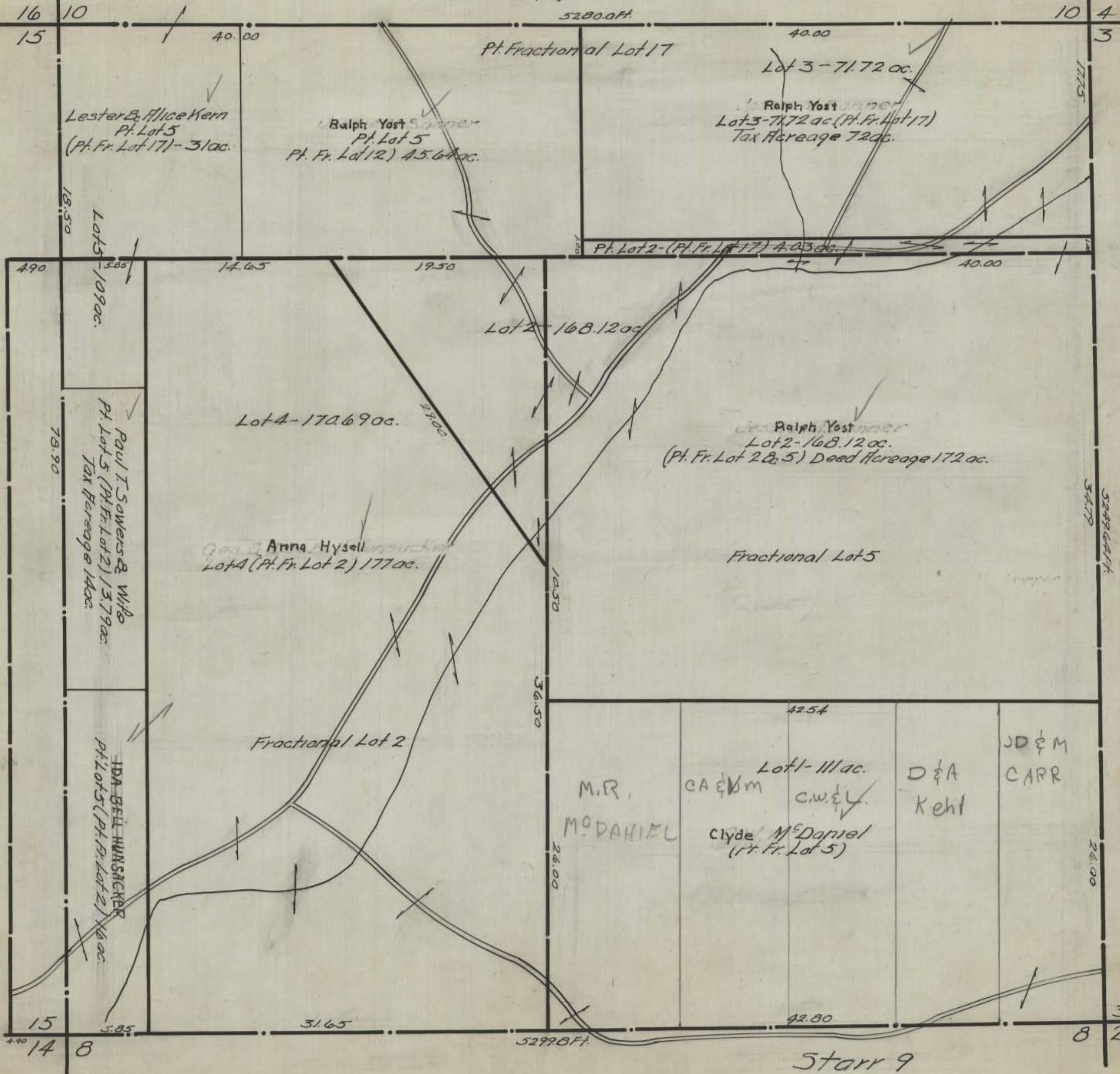


HOCKING COUNTY STATE OHIO  
SECTION 9 TWP. 12 RANGE 16

Orig. 1943

Starr 9



Lester & Alice Kern  
Pt. Lot 5  
(Pt. Fr. Lot 17) - 3.1 ac.

Ralph Yost  
Pt. Lot 5  
Pt. Fr. Lot 12) 45.6 ac.

Ralph Yost  
Lot 3 - 71.72 ac.  
Tax Acreage 72 ac.

Pt. Lot 2 - (Pt. Fr. Lot 17) 4.03 ac.

Lot 2 - 168.12 ac.

Lot 4 - 170.69 ac.

Ralph Yost  
Lot 2 - 168.12 ac.  
(Pt. Fr. Lot 2 & 5) Deed Acreage 172 ac.

Anna Hysell  
Lot A (Pt. Fr. Lot 2) 177 ac.

Fractional Lot 5

Fractional Lot 2

M.R.  
MODANIEL

CA & M  
Clyde McDaniel  
(Pt. Fr. Lot 5)

D & A  
Kehl

JD & M  
CARR

Starr 9