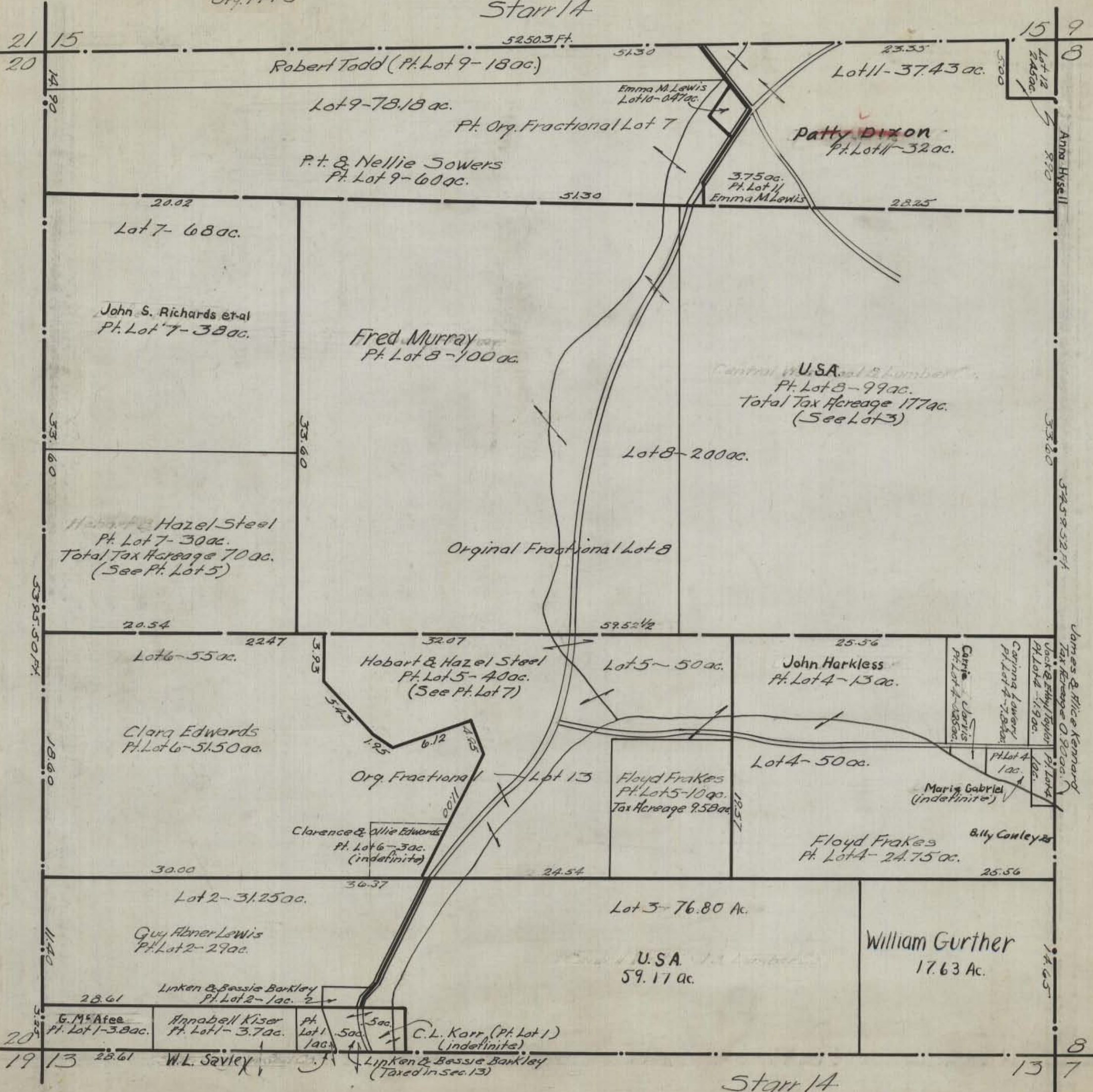


HOCKING COUNTY STATE OHIO  
SECTION 14 TWP. 12 RANGE 16

Orig. 1943

Starr 1A



21 15  
20

15 9  
8

20  
19 13

13 7

Starr 1A

Anna Hysell

5459.52 ft

James & Alice Kemard  
Tax Hereage 0.90 ac.

14.05

20.02  
Lot 7-68 ac.

John S. Richards et al  
Pt. Lot 7-38 ac.

Fred Murray  
Pt. Lot 8-100 ac.

Hazel Steel  
Pt. Lot 7-30 ac.  
Total Tax Hereage 70 ac.  
(See Pt. Lot 5)

Original Fractional Lot 8

Lot 8-200 ac.

U.S.A.  
Pt. Lot 8-99 ac.  
Total Tax Hereage 177 ac.  
(See Lot 3)

20.54  
Lot 6-55 ac.

Clara Edwards  
Pt. Lot 6-51.50 ac.

Hobart & Hazel Steel  
Pt. Lot 5-40 ac.  
(See Pt. Lot 7)

Lot 5-50 ac.

John Harkless  
Pt. Lot 4-13 ac.

Org. Fractional Lot 13

Floyd Frakes  
Pt. Lot 5-10 ac.  
Tax Hereage 9.58 ac.

Lot 4-50 ac.

Mary Gabriel  
(Indefinite)

30.00  
Lot 2-31.25 ac.

Guy Abner Lewis  
Pt. Lot 2-29 ac.

Lot 3-76.80 ac.

U.S.A.  
59.17 ac.

William Gurther  
17.63 ac.

Linken & Bassie Barkley  
Pt. Lot 2-1 ac. 2

G.M. Afee  
Pt. Lot 1-3.8 ac.

Annabell Kiser  
Pt. Lot 1-3.7 ac.

Pt. Lot 1-1 ac.

C.L. Karr (Pt. Lot 1)  
(Indefinite)

W.L. Savley

Linken & Bassie Barkley  
(Taxed in Sec. 13)