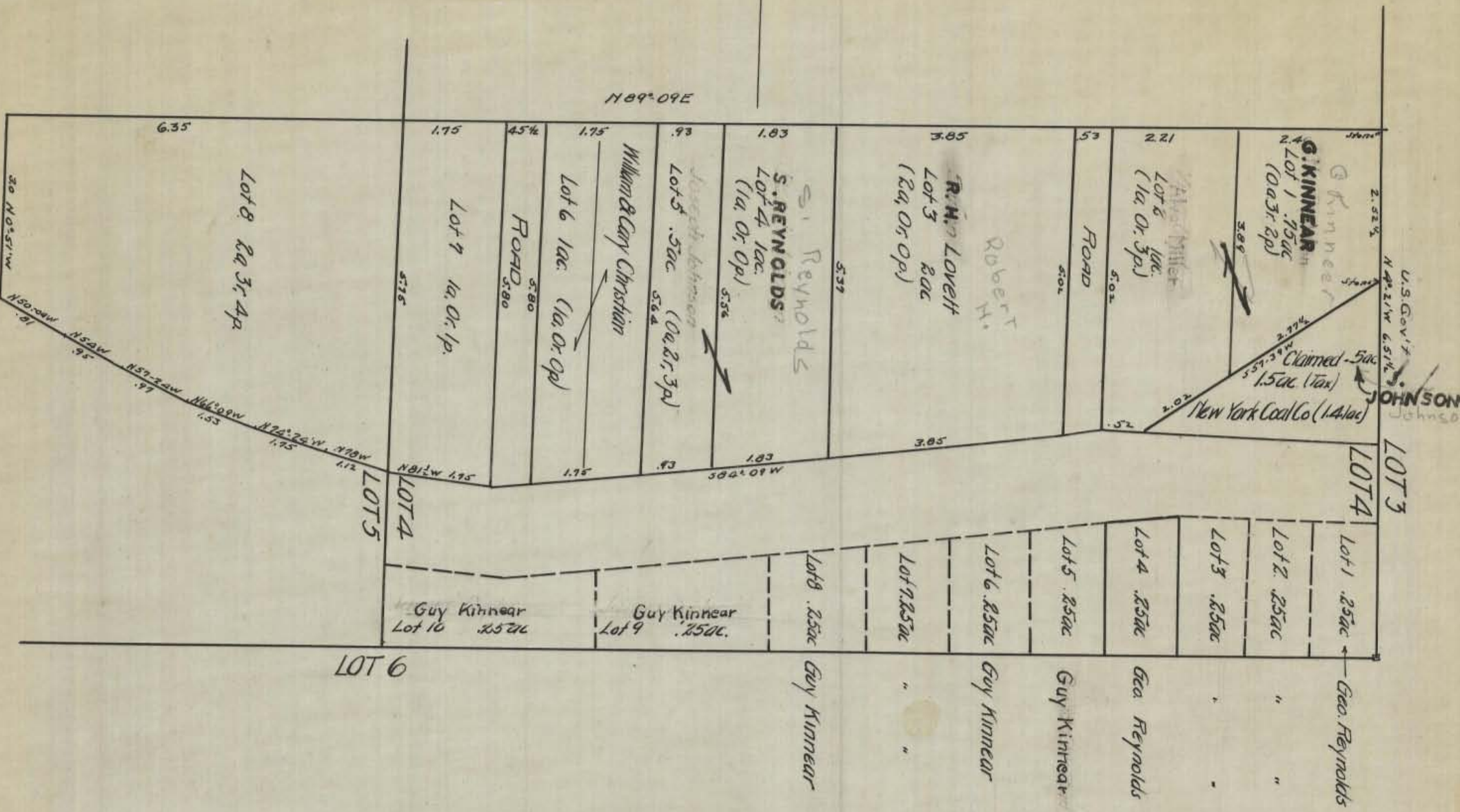


Original A.W.S. Sept 24, 1938.



SUBDIVISION PART LOT 4
Sec. 14, Ward Twp.

See Pg 456 Bk A (orig) or Pg 406 Bk A (Copy) Recorder's Office
Note (An unrecorded subdivision is shown in dash lines. (Diagrammatic))

WARD 14 Special "A"