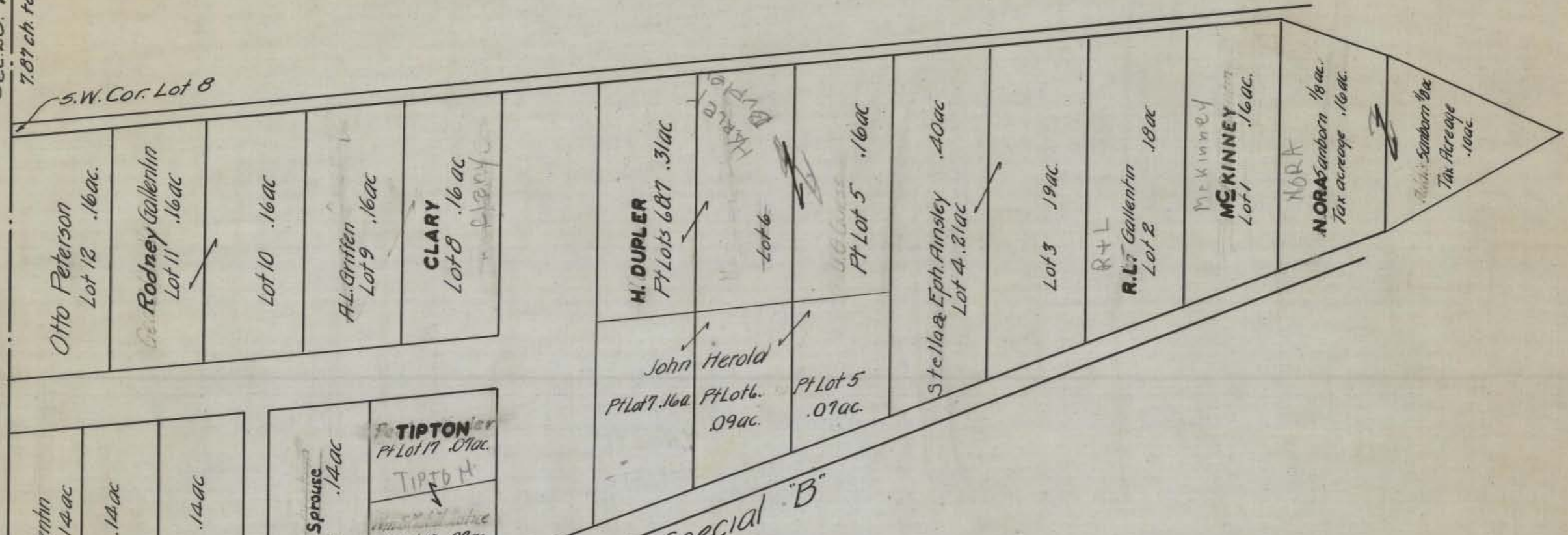


Sec. 20. Ward.
787 ch. to NW Cor. Sec. 14 Ward.

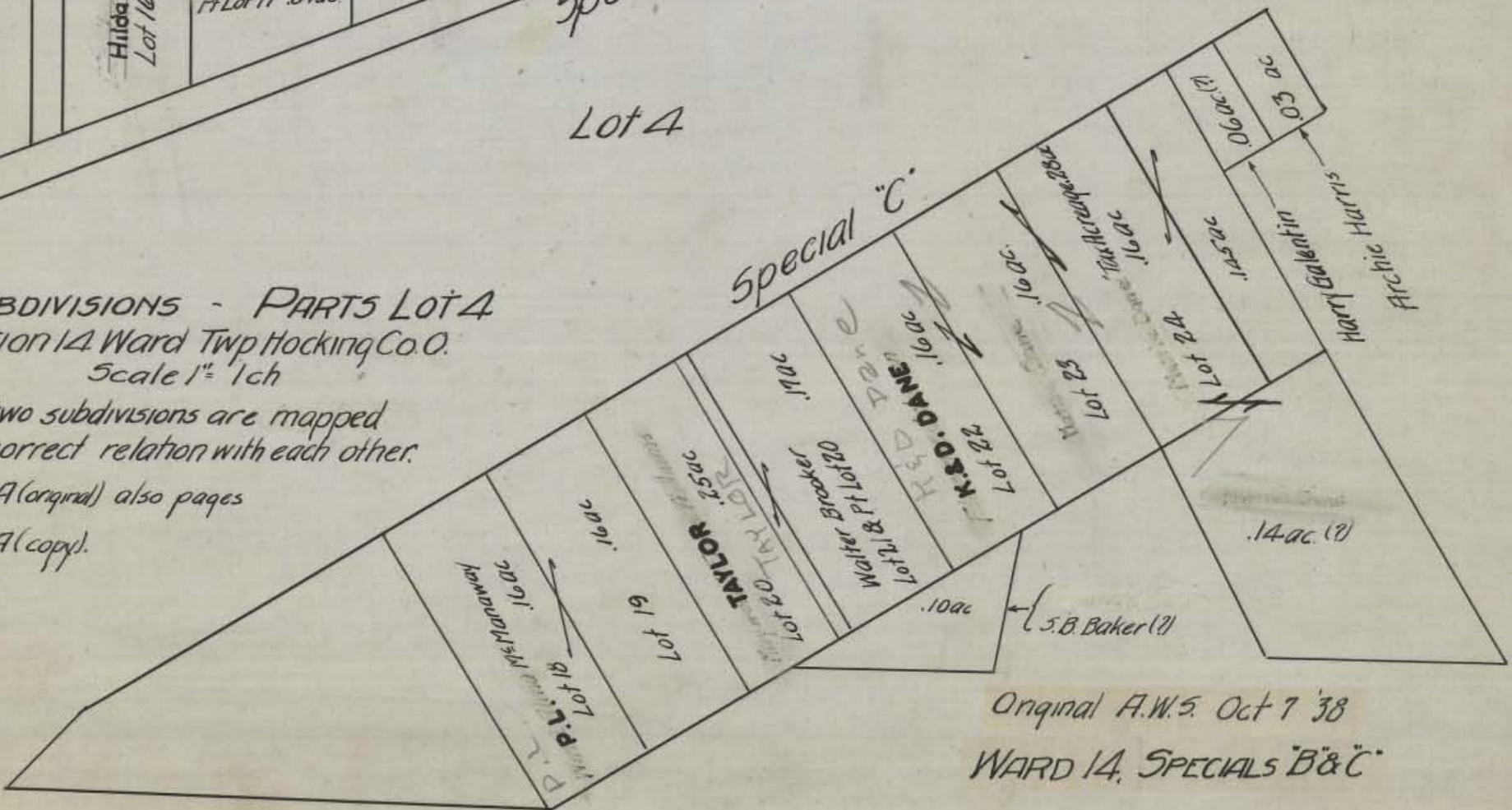


Special "B"

Lot 4

Two SUBDIVISIONS - PARTS LOT 4
Section 14 Ward Twp Hocking Co. O.
Scale 1" = 1ch

Note - These two subdivisions are mapped in their correct relation with each other.
See Page 259 Bk A (original) also pages 405-431 Bk A (copy).



Original A.W.S. Oct 7 '38
WARD 14, SPECIALS "B" & "C"