

Orig. A.W. 5 Nov 5 1938

WARD  
NORTH

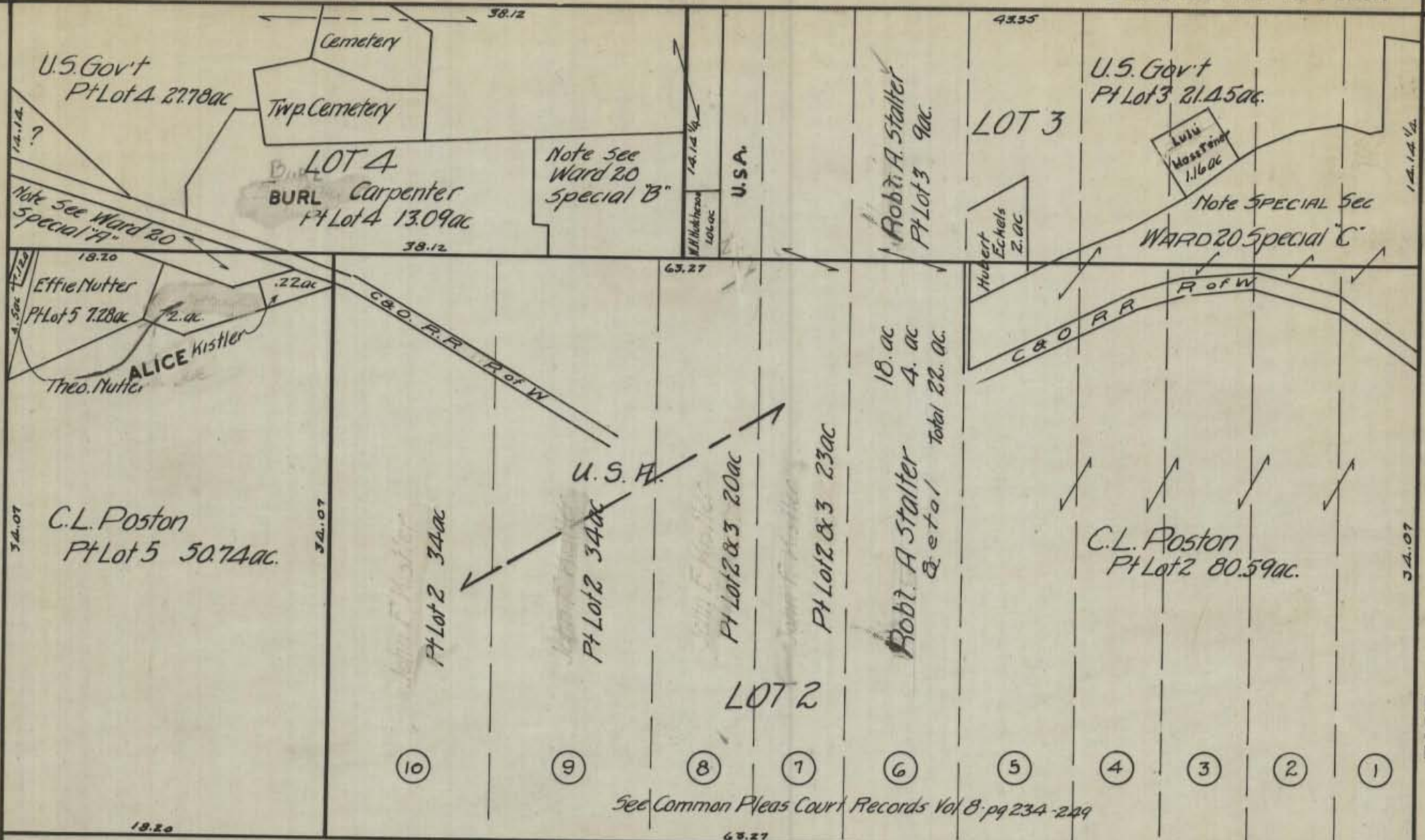
SCALE: 500 FEET TO 1 INCH

27 21

21 15

26

14



WEST

EAST

- ⑩
- ⑨
- ⑧
- ⑦
- ⑥
- ⑤
- ④
- ③
- ②
- ①

See Common Pleas Court Records Vol 8 pg 234-249

U.S. America  
Lot 1 275.04ac.

26

14

25 19

SOUTH

WARD 20  
See Special A-B-C  
19 13