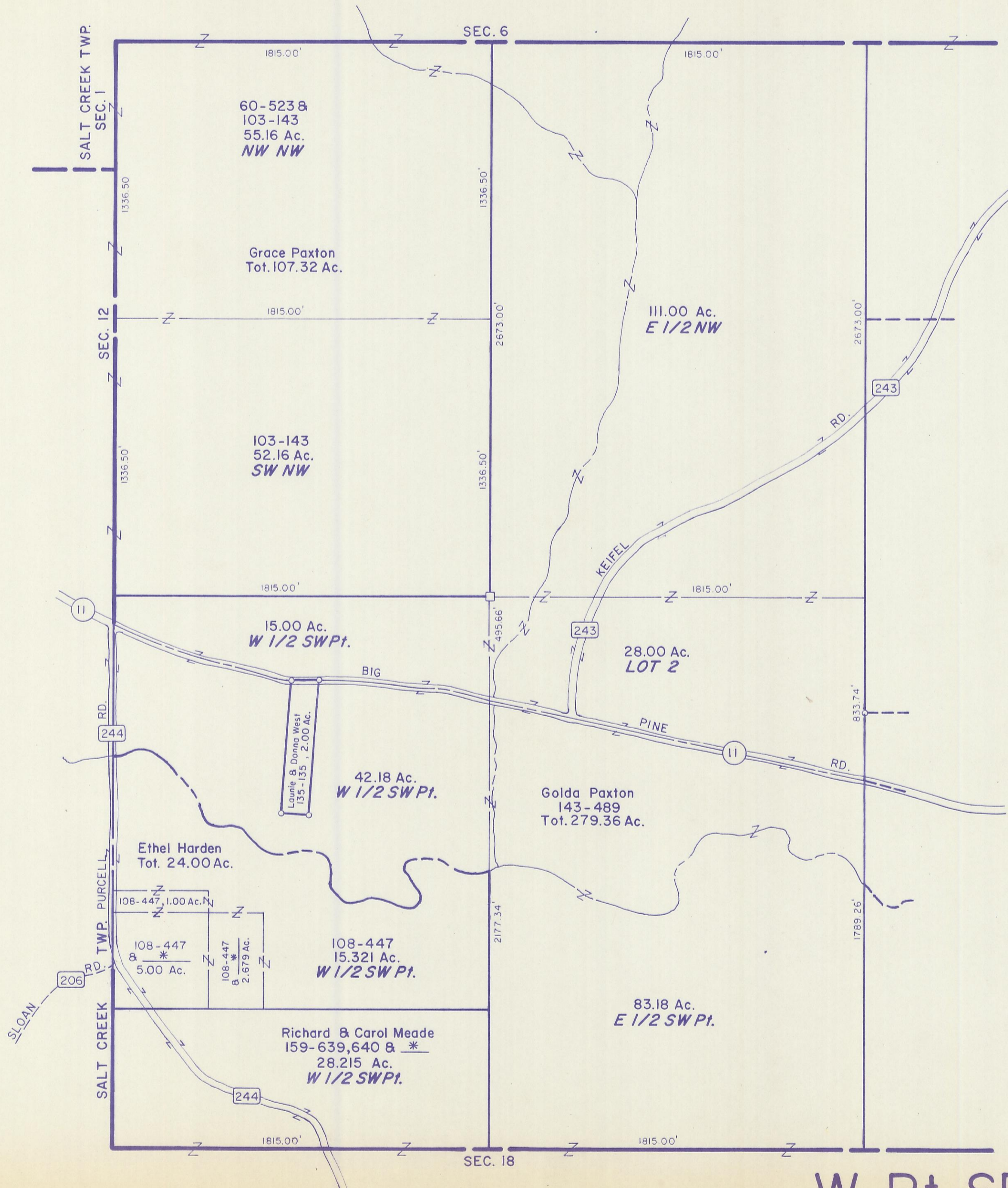


HOCKING COUNTY

BENTON TWP.

W Pt. SEC. 7 T11 R18

Scale 1"=400'



SALT CREEK TWP.
SEC. 1

SEC. 6

SEC. 12

SEC. 18

SLOAN RD.

SALT CREEK TWP. PURCELL RD.

60-5238
103-143
55.16 Ac.
NW NW

Grace Paxton
Tot. 107.32 Ac.

103-143
52.16 Ac.
SW NW

15.00 Ac.
W 1/2 SW Pt.

Laurie & Donna West
135-135, 2.00 Ac.

42.18 Ac.
W 1/2 SW Pt.

Ethel Harden
Tot. 24.00 Ac.

108-447, 1.00 Ac. N

108-447
& *
5.00 Ac.

108-447
& *
2.679 Ac.

108-447
15.321 Ac.
W 1/2 SW Pt.

Richard & Carol Meade
159-639, 640 & *
28.215 Ac.
W 1/2 SW Pt.

111.00 Ac.
E 1/2 NW

28.00 Ac.
LOT 2

Golda Paxton
143-489
Tot. 279.36 Ac.

83.18 Ac.
E 1/2 SW Pt.

W Pt. SEC. 7