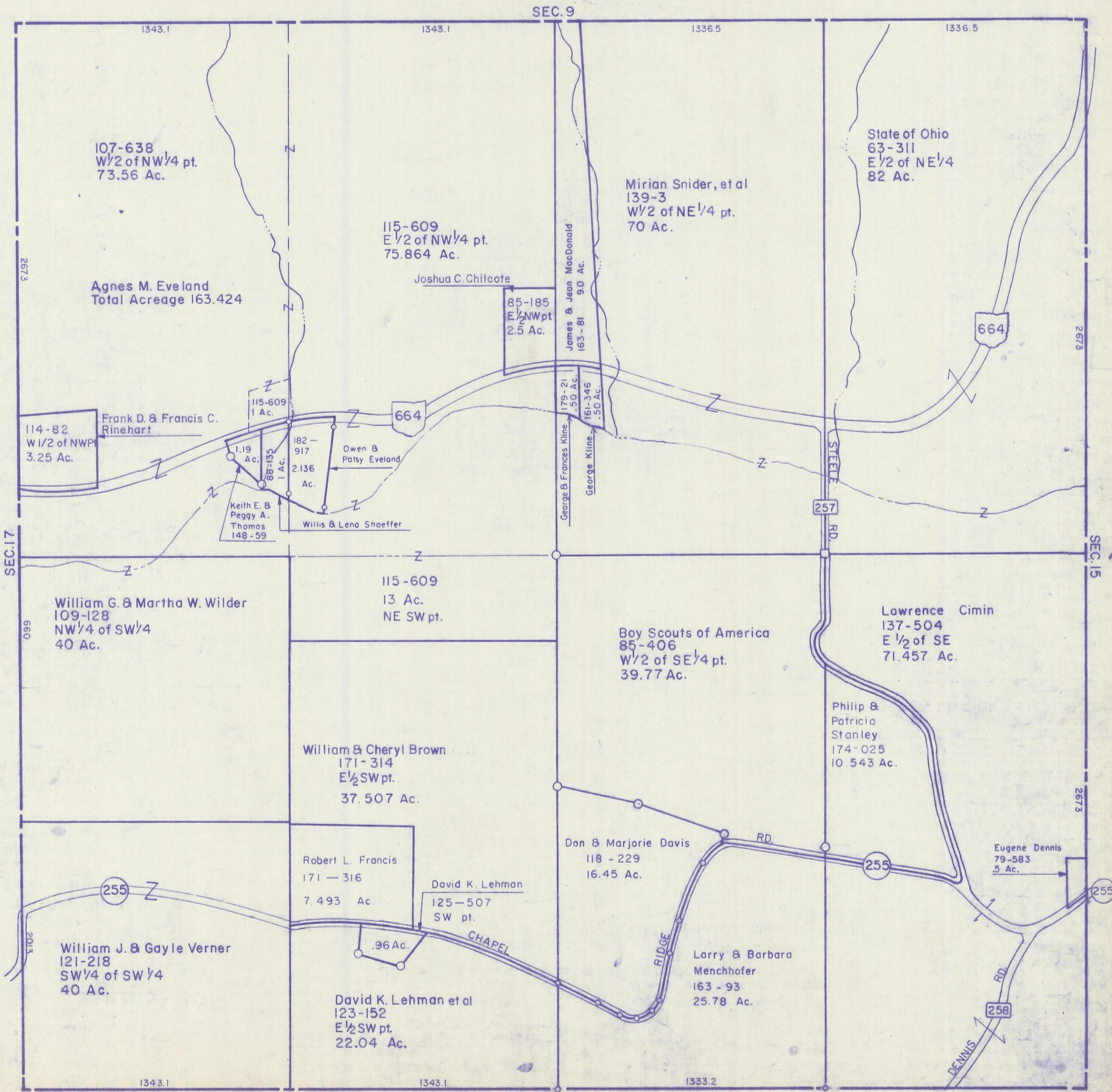


HOCKING COUNTY

Sec. 16 T11 R18

BENTON TWP.

Scale: 1"=400'



107-638
W 1/2 of NW 1/4 pt.
73.56 Ac.

Agnes M. Eveland
Total Acreage 163.424

115-609
E 1/2 of NW 1/4 pt.
75.864 Ac.

Joshua C. Chilcote

Mirian Snider, et al
139-3
W 1/2 of NE 1/4 pt.
70 Ac.

State of Ohio
63-311
E 1/2 of NE 1/4
82 Ac.

85-185
E 1/2 NW pt
2.5 Ac.

James & Jean MacDonald
163-81
.90 Ac.

114-82
W 1/2 of NW 1/4
3.25 Ac.

Frank D. & Francis C.
Rinehart

115-609
1 Ac.

1.19
Ac.

88-135
1 Ac.

Keith E. &
Peggy A.
Thomas
148-59

182-
917
2.136
Ac.

Owen &
Patsy Eveland

Willis & Lena Shaeffer

115-609
13 Ac.
NE SW pt.

William G. & Martha W. Wilder
109-128
NW 1/4 of SW 1/4
40 Ac.

Boy Scouts of America
85-406
W 1/2 of SE 1/4 pt.
39.77 Ac.

Lawrence Cimin
137-504
E 1/2 of SE
71.457 Ac.

William & Cheryl Brown
171-314
E 1/2 SW pt.
37.507 Ac.

Philip &
Patricia
Stanley
174-025
10.543 Ac.

Robert L. Francis
171-316
7.493 Ac.

David K. Lehman
125-507
SW pt.
.96 Ac.

Don & Marjorie Davis
118-229
16.45 Ac.

Eugene Dennis
79-583
.5 Ac.

William J. & Gayle Verner
121-218
SW 1/4 of SW 1/4
40 Ac.

David K. Lehman et al
123-152
E 1/2 SW pt.
22.04 Ac.

Larry & Barbara
Menchofer
163-93
25.78 Ac.

SEC. 16