

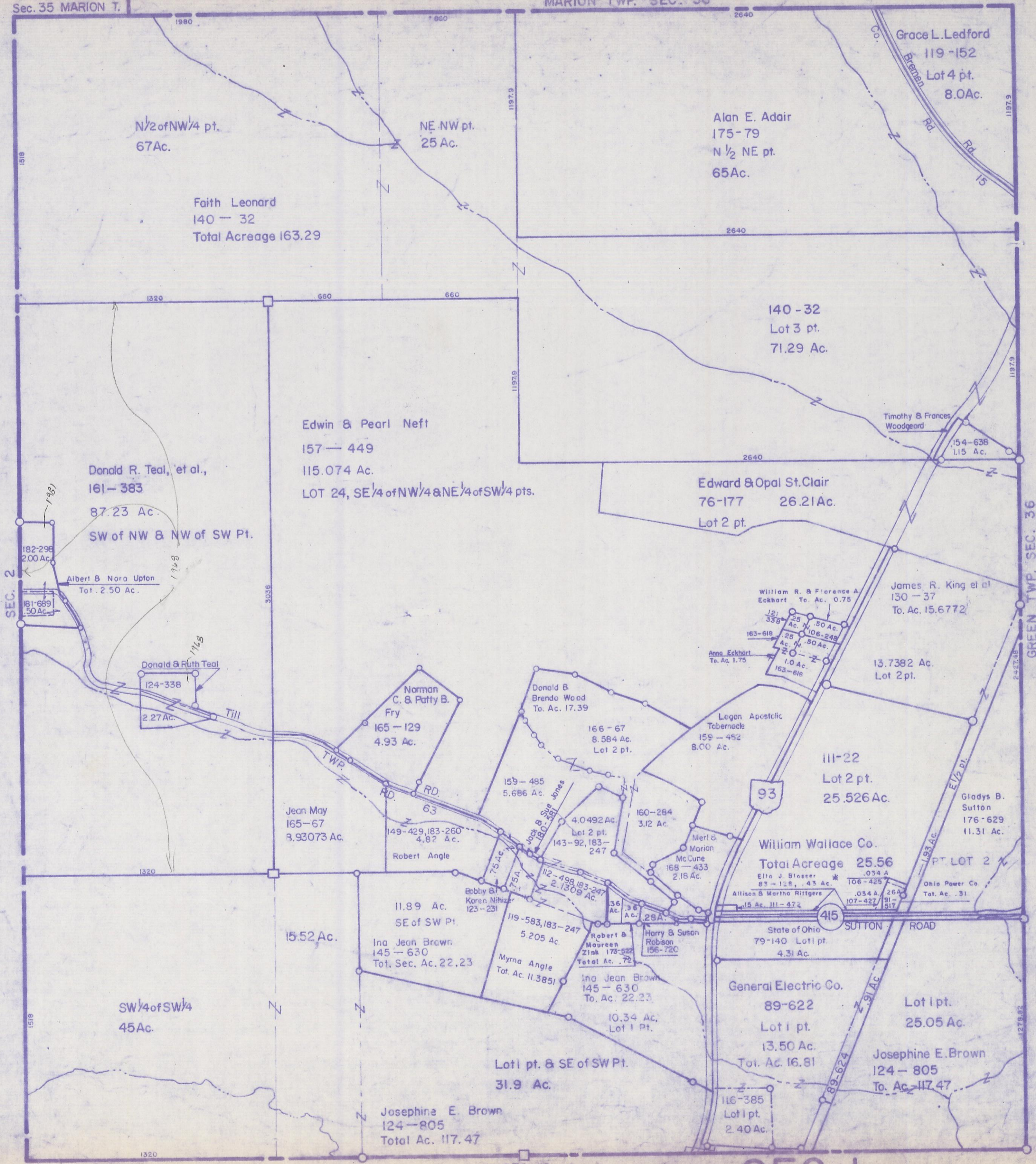
SCALE: 1" = 400'

HOCKING COUNTY

FALLS TWP. SEC. 1 T14 R17

Sec. 35 MARION T.

MARION TWP. SEC. 36



N 1/2 of NW 1/4 pt.
67Ac.

NE NW pt.
25 Ac.

Alan E. Adair
175-79
N 1/2 NE pt.
65Ac.

Grace L. Ledford
119-152
Lot 4 pt.
8.0Ac.

Faith Leonard
140-32
Total Acreage 163.29

140-32
Lot 3 pt.
71.29 Ac.

Edwin & Pearl Neft
157-449
115.074 Ac.
LOT 24, SE 1/4 of NW 1/4 & NE 1/4 of SW 1/4 pts.

Edward & Opal St. Clair
76-177 26.21Ac.
Lot 2 pt.

Donald R. Teal, et al.,
161-383
87.23 Ac.
SW of NW & NW of SW Pt.

Albert & Nora Upton
Tot. 2.50 Ac.

Donald & Ruth Teal
124-338
2.27 Ac.

Jean May
165-67
8.93073 Ac.

Norman C. & Patty B. Fry
165-129
4.93 Ac.

Donald & Brendo Wood
To. Ac. 17.39

166-67
8.584 Ac.
Lot 2 pt.

Logon Apostolic
Tabernacle
159-452
8.00 Ac.

111-22
Lot 2 pt.
25.526 Ac.

James R. King et al
130-37
To. Ac. 15.6772

Gladys B. Sutton
176-629
11.31 Ac.

15.52 Ac.

11.89 Ac.
SE of SW Pt.
Ina Jean Brown
145-630
Tot. Sec. Ac. 22.23

Myrna Angle
Tot. Ac. 11.3851

10.34 Ac.
Lot 1 pt.

Lot 1 pt. & SE of SW Pt.
31.9 Ac.

Josephina E. Brown
124-805
Total Ac. 117.47

William Wallace Co.
Total Acreage 25.56
Elio J. Blosser .034 A
83-128 .43 Ac.
Allison & Martha Rittgers
15 Ac. 111-472

State of Ohio
79-140 Lot 1 pt.
4.31 Ac.

General Electric Co.
89-622
Lot 1 pt.
13.50 Ac.
Tot. Ac. 16.81

Lot 1 pt.
25.05 Ac.

Josephine E. Brown
124-805
To. Ac. 117.47

116-385
Lot 1 pt.
2.40 Ac.

SEC. 12

SEC. 1

GREEN TWP. SEC. 36