

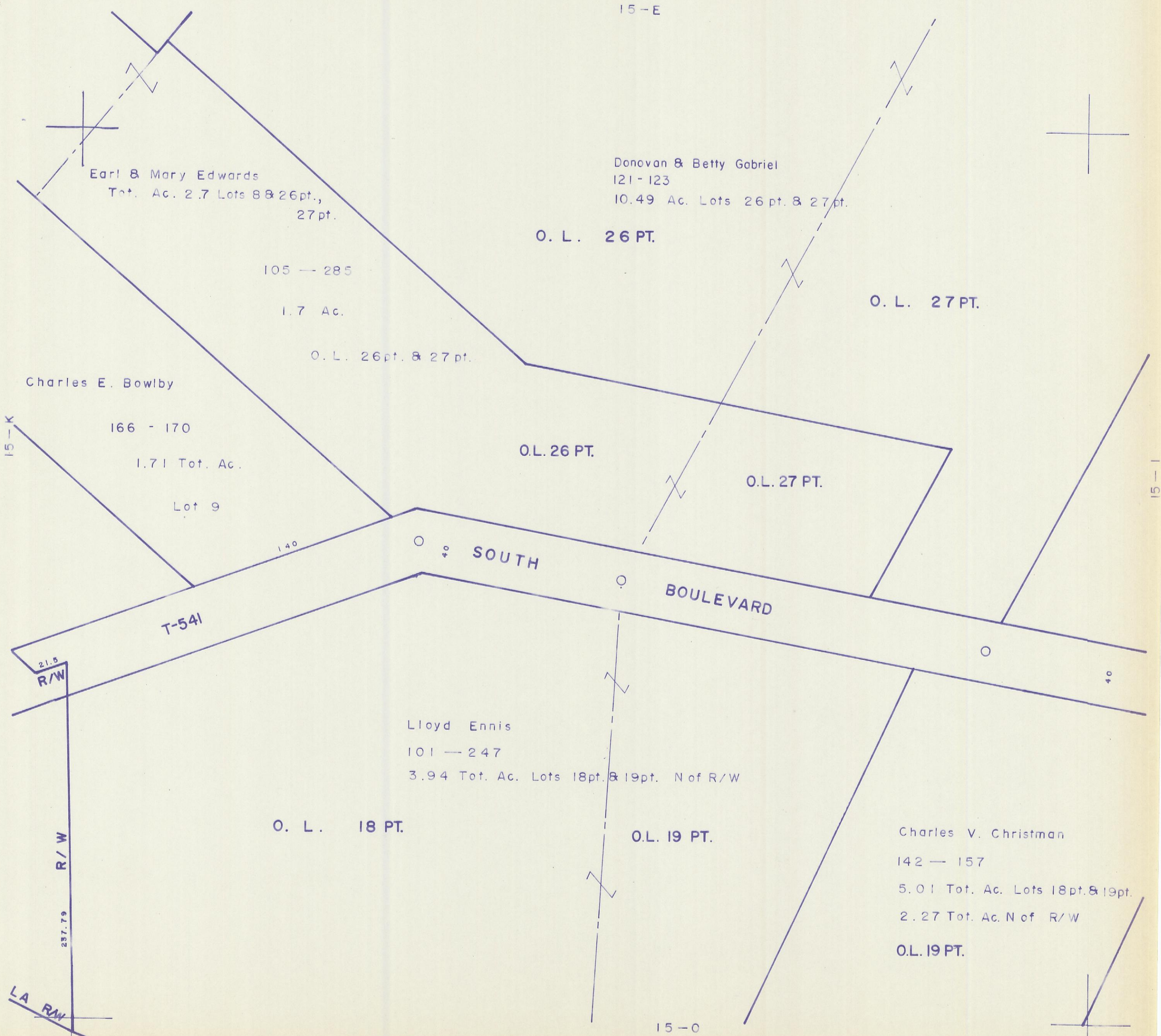
HOCKING COUNTY

Sec. 15 T14 R17

FALLS TWP.

Scale 1" = 50'

15-J



Earl & Mary Edwards
 Tot. Ac. 2.7 Lots 8 & 26pt.,
 27pt.

Donovan & Betty Gabriel
 121-123
 10.49 Ac. Lots 26pt. & 27pt.

105 — 285
 1.7 Ac.

O. L. 27 PT.

O. L. 26 PT.

O. L. 26pt. & 27pt.

Charles E. Bowlby

166 - 170
 1.71 Tot. Ac.
 Lot 9

O.L. 26 PT.

O.L. 27 PT.

SOUTH

BOULEVARD

T-541

21.5
 R/W

R/W

237.79

LA RAW

Lloyd Ennis
 101 — 247
 3.94 Tot. Ac. Lots 18pt. & 19pt. N of R/W

O. L. 18 PT.

O.L. 19 PT.

Charles V. Christman
 142 — 157
 5.01 Tot. Ac. Lots 18pt. & 19pt.
 2.27 Tot. Ac. N of R/W

O.L. 19 PT.

15-O

SPRING HILL ALL. 15-J