

HOCKING COUNTY

Sec. 18 T. 14 R. 17

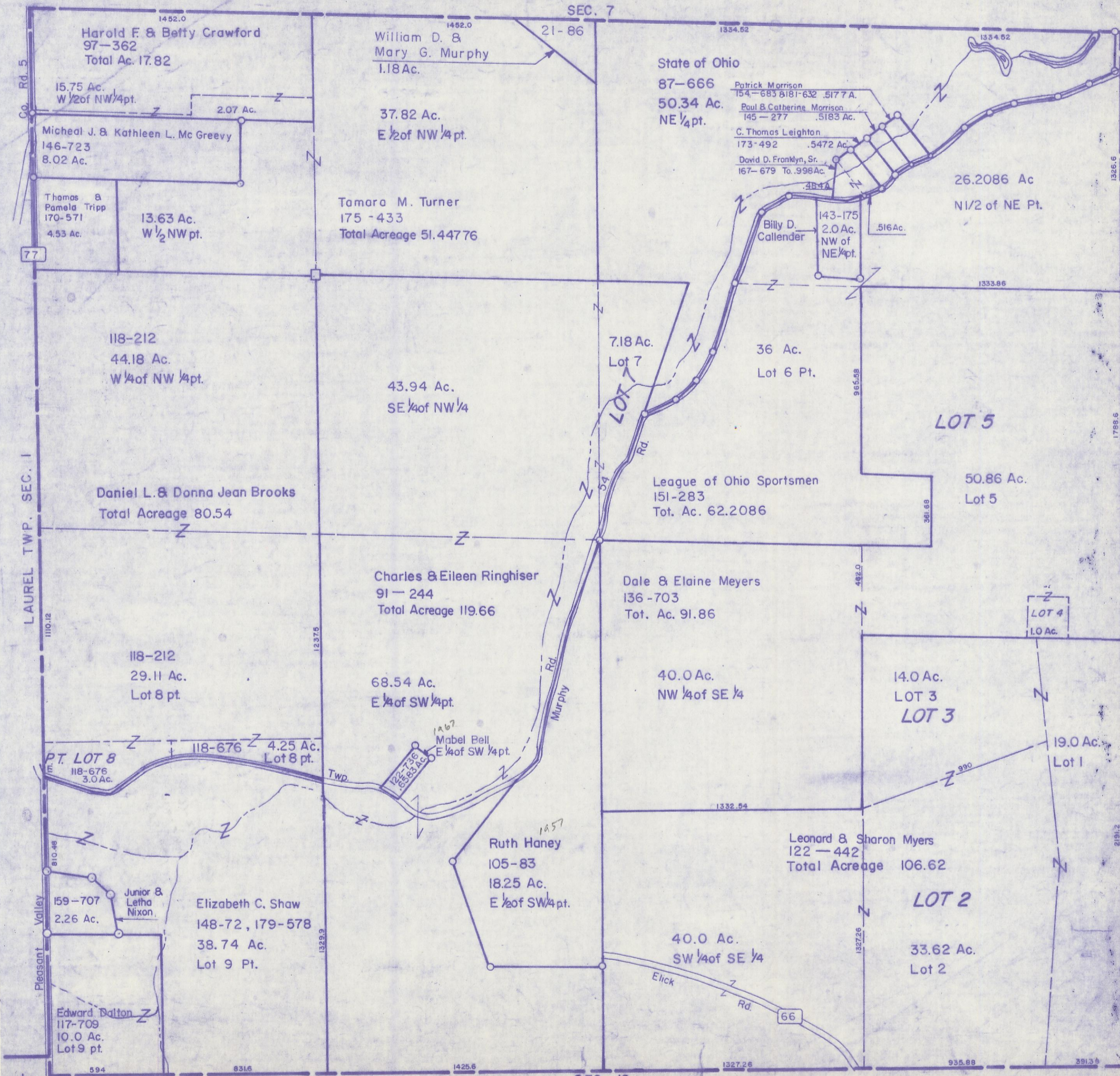
FALLS TWP.

Scale 1"=400'

SEC. 7

SEC. 19

SEC. 18



Harold F. & Betty Crawford  
97-362  
Total Ac. 17.82

William D. & Mary G. Murphy  
1.18 Ac.

State of Ohio  
87-666  
50.34 Ac.  
NE 1/4 pt.

Patrick Morrison  
154-683 & 181-632 .5177 A.  
Paul & Catherine Morrison  
145-277 .5183 Ac.  
C. Thomas Leighton  
173-492 .5472 Ac.  
David D. Franklyn, Sr.  
167-679 To .998 Ac.

Michael J. & Kathleen L. Mc Greevy  
146-723  
8.02 Ac.

Thomas & Pamela Tripp  
170-571  
4.53 Ac.

13.63 Ac.  
W 1/2 NW pt.

37.82 Ac.  
E 1/2 of NW 1/4 pt.

Tamara M. Turner  
175-433  
Total Acreage 51.44776

26.2086 Ac  
N 1/2 of NE Pt.

77

118-212  
44.18 Ac.  
W 1/4 of NW 1/4 pt.

43.94 Ac.  
SE 1/4 of NW 1/4

7.18 Ac.  
Lot 7

36 Ac.  
Lot 6 Pt.

League of Ohio Sportsmen  
151-283  
Tot. Ac. 62.2086

50.86 Ac.  
Lot 5

LOT 5

Daniel L. & Donna Jean Brooks  
Total Acreage 80.54

Charles & Eileen Ringhiser  
91-244  
Total Acreage 119.66

Dale & Elaine Meyers  
136-703  
Tot. Ac. 91.86

40.0 Ac.  
NW 1/4 of SE 1/4

14.0 Ac.  
LOT 3  
LOT 3

19.0 Ac.  
Lot 1

68.54 Ac.  
E 1/4 of SW 1/4 pt.

Mabel Bell  
122-736  
1.67  
E 1/4 of SW 1/4 pt.

Ruth Haney  
105-83  
18.25 Ac.  
E 1/2 of SW 1/4 pt.

Leonard & Sharon Myers  
122-442  
Total Acreage 106.62

LOT 2

33.62 Ac.  
Lot 2

PT. LOT 8  
118-676  
3.0 Ac.

4.25 Ac.  
Lot 8 pt.

118-212  
29.11 Ac.  
Lot 8 pt.

159-707  
2.26 Ac.

Junior & Letha Nixon

Elizabeth C. Shaw  
148-72, 179-578  
38.74 Ac.  
Lot 9 Pt.

Edward Dalton  
117-709  
10.0 Ac.  
Lot 9 pt.

Valley Pleasant

Elick Rd.

66