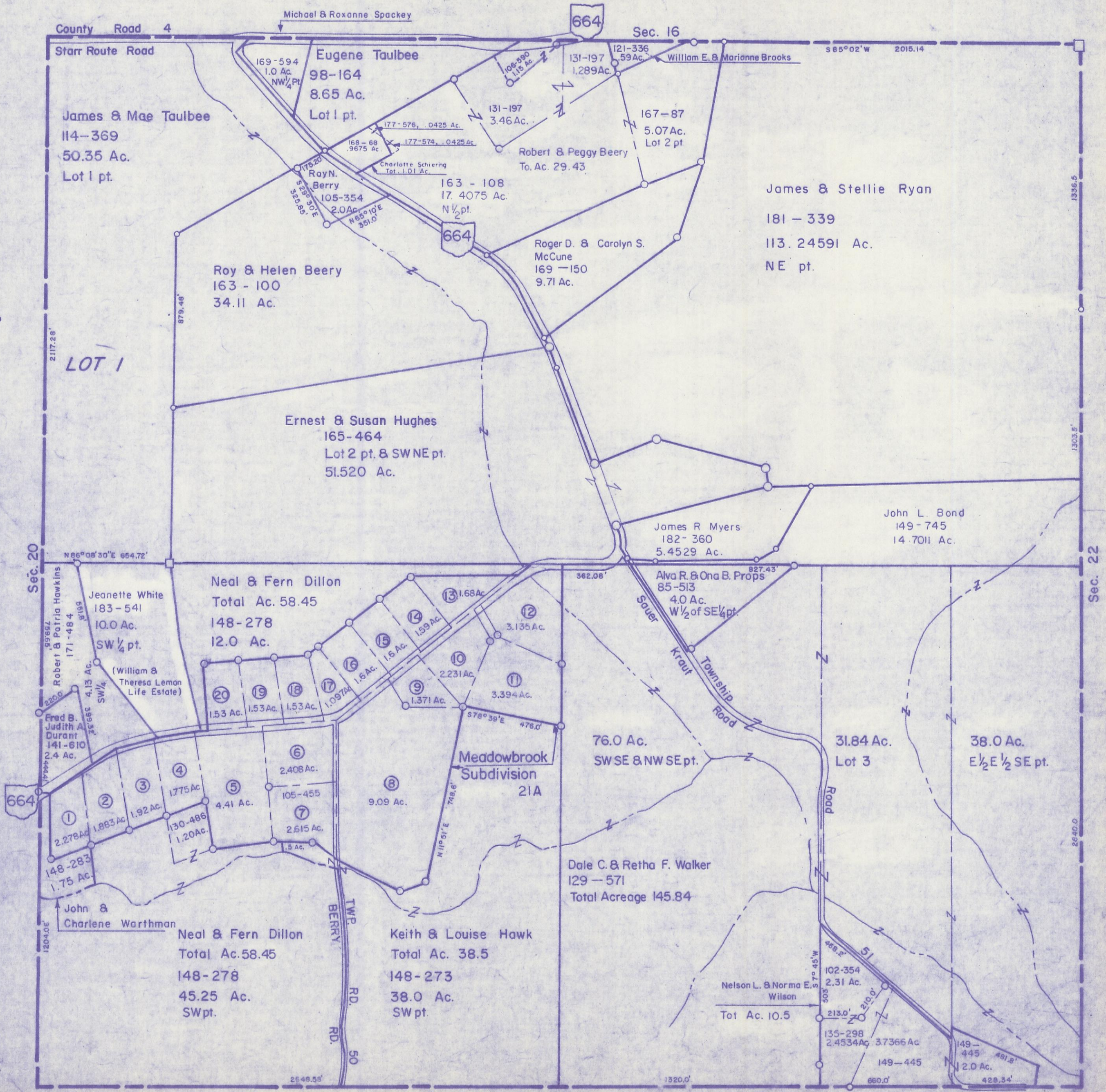


# HOCKING COUNTY

Sec. 21 T14 R17

FALLS TWP.

Scale 1" = 400'



County Road 4

Michael & Roxanne Spackey

664

Sec. 16

S 85° 02' W 2015.14

Starr Route Road

Eugene Taulbee  
98-164  
8.65 Ac.  
Lot 1 pt.

131-197  
1,289 Ac.

121-336  
59 Ac.

James & Mae Taulbee  
114-369  
50.35 Ac.  
Lot 1 pt.

177-576, 0425 Ac.  
177-574, 0425 Ac.  
Charlotte Schiering  
Tot. 1.01 Ac.

131-197  
3.46 Ac.

167-87  
5.07 Ac.  
Lot 2 pt.

Robert & Peggy Beery  
To. Ac. 29.43

163-108  
17.4075 Ac.  
N 1/2 pt.

James & Stellie Ryan  
181-339  
113.24591 Ac.  
NE pt.

Roy & Helen Beery  
163-100  
34.11 Ac.

Roger D. & Carolyn S.  
McCune  
169-150  
9.71 Ac.

LOT 1

Ernest & Susan Hughes  
165-464  
Lot 2 pt. & SWNE pt.  
51.520 Ac.

James R Myers  
182-360  
5.4529 Ac.

John L. Bond  
149-745  
14.7011 Ac.

Sec. 20

N 66° 08' 30" E 654.72'

Neal & Fern Dillon  
Total Ac. 58.45  
148-278  
12.0 Ac.

Alva R. & Ona B. Props  
85-513  
4.0 Ac.  
W 1/2 of SE 1/4 pt.

Jeanette White  
183-541  
10.0 Ac.  
SW 1/4 pt.

Robert & Patricia Hawkins  
171-484

Fred B. Judith A. Duran  
141-610  
2.4 Ac.

(William & Theresa Lemon  
Life Estate)

15.3 Ac. 1.53 Ac. 1.53 Ac. 1.0974

1.6 Ac. 1.6 Ac. 1.6 Ac. 1.6 Ac.

2.231 Ac. 3.394 Ac.

76.0 Ac.  
SWSE & NWSE pt.

31.84 Ac.  
Lot 3

38.0 Ac.  
E 1/2 E 1/2 SE pt.

664

1.75 Ac. 1.883 Ac. 1.92 Ac. 1.775 Ac. 4.41 Ac. 2.408 Ac.

130-486  
1.20 Ac. 2.615 Ac. 1.5 Ac.

9.09 Ac. 2.231 Ac. 3.394 Ac.

Meadowbrook  
Subdivision  
21A

Dale C. & Retha F. Walker  
129-571  
Total Acreage 145.84

John & Charlene Warthman

Neal & Fern Dillon  
Total Ac. 58.45  
148-278  
45.25 Ac.  
SW pt.

Keith & Louise Hawk  
Total Ac. 38.5  
148-273  
38.0 Ac.  
SW pt.

Nelson L. & Norma E. Wilson  
102-354  
2.31 Ac.  
Tot. Ac. 10.5

135-298  
2.4534 Ac. 3.7366 Ac.

149-445  
2.0 Ac.

1204.0'

BERRY TWP. RD. 50

2649.55'

Sec. 28

1320.0'

660.0'

# SEC. 21