

SEE SHEET 14

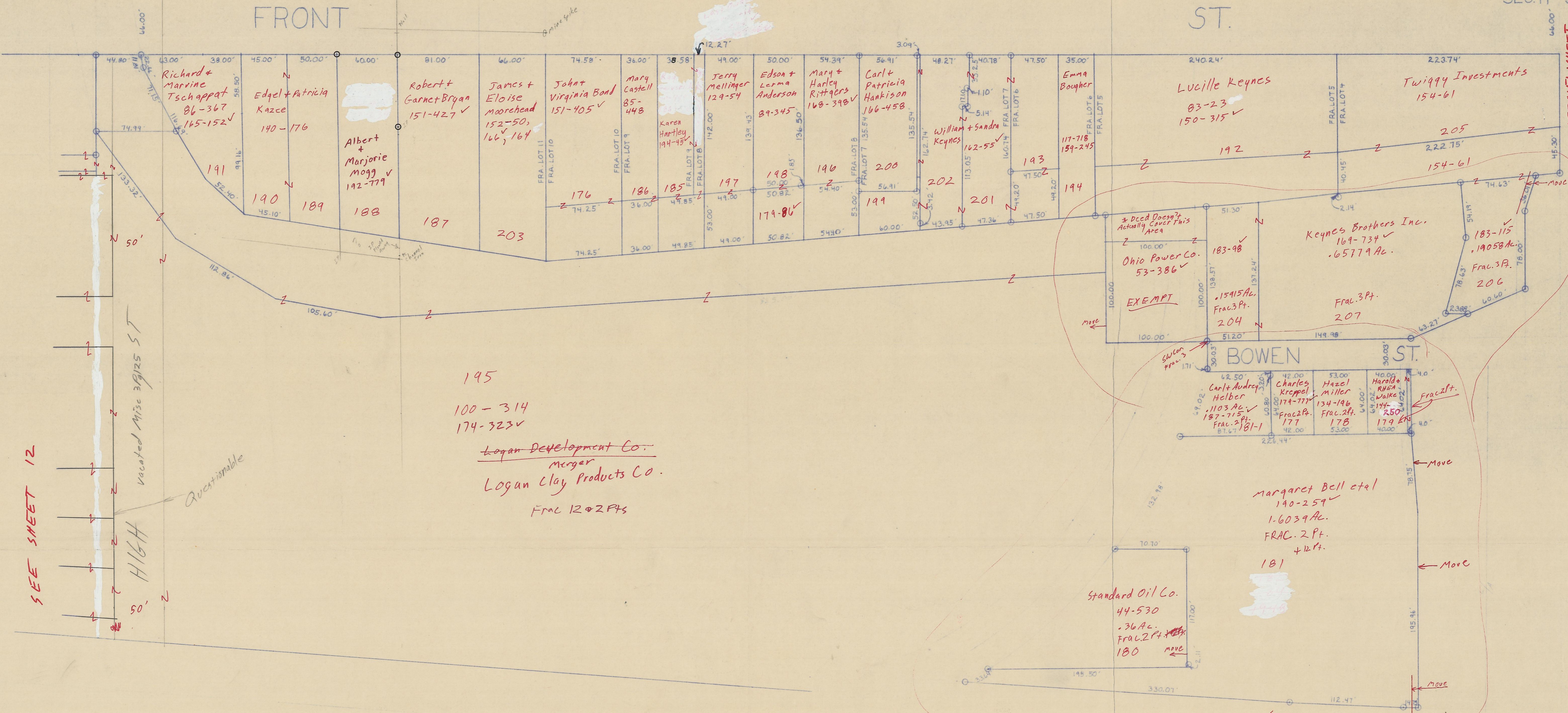
SEE SHEET 18

SEC. 11 SEC. 12
SEC. 14 SEC. 13

FRONT

ST.

SEENEW SHEET.
Names, U.P.'s, & Card #s have
been checked to Ink
Ready To Ink
Card # 176-181 Incl.
185-207 Incl.
183 Building Only



SEE SHEET 12

VACATED MISC 3/12/5 ST

Questionable

195
100-314
174-323
Logan Development Co.
merger
Logan Clay Products Co.
Frac 12 & 2 Pts

MULBERRY AKA State Route 93

SEE SHEET 19
TO DATE 6-1-85

Names, U.P.'s, & Card #s have
been checked Ready To Ink

Card # 176-181 Incl.
185-207 Incl.
(183 Building Only)