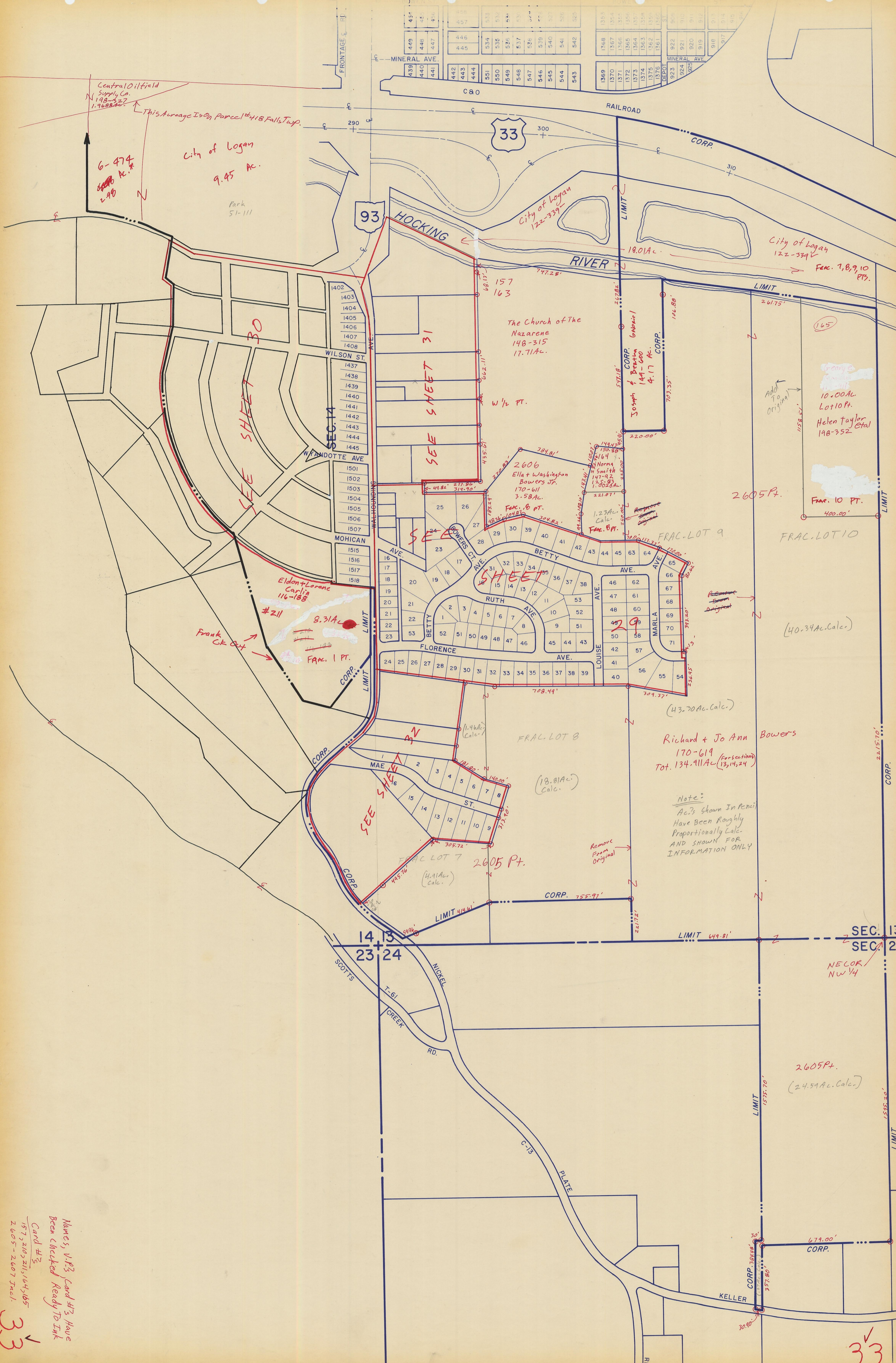


Central Oilfield Supply Co. 198-327 1.9688 Ac.
 This Average Is On Parcel #18 Falls Twp.

6-474
 2.98 Ac.
 2.98

City of Logan
 9.45 Ac.
 Park 51-111

439	440	441	442	443	444	445	446	447	448	449	537	538	539	540	541	542	543	544	545	546	547	548	549	550	551	552	553	554	555	556	557	558	559	560	561	562	563	564	565	566	567	568	569	570	571	572	573	574	575	576	577	578	579	580	581	582	583	584	585	586	587	588	589	590	591	592	593	594	595	596	597	598	599	600
-----	-----	-----	-----	-----	-----	-----	-----	-----	-----	-----	-----	-----	-----	-----	-----	-----	-----	-----	-----	-----	-----	-----	-----	-----	-----	-----	-----	-----	-----	-----	-----	-----	-----	-----	-----	-----	-----	-----	-----	-----	-----	-----	-----	-----	-----	-----	-----	-----	-----	-----	-----	-----	-----	-----	-----	-----	-----	-----	-----	-----	-----	-----	-----	-----	-----	-----	-----	-----	-----	-----	-----	-----	-----	-----



SEE SHEET 30

SEE SHEET 31

SEE SHEET 29

SEE SHEET 32

SEE SHEET 33

Eldon + Lorenz Carlin
 116-183
 #211
 8.31 Ac.
 Frac. 1 Pt.
 Frank Ck. Out

The Church of the Nazarene
 148-315
 17.71 Ac.

2606
 Ella + Washington Bowers Jr.
 170-611
 3.58 Ac.
 Frac. 10 Pt.

2605 Pt.

FRAC. LOT 8
 (18.81 Ac. Calc.)

Joseph + Beatrice GABRIEL
 149-600
 4.17 Ac.
 CORP.

2605 Pt.

FRAC. LOT 9
 (43.70 Ac. Calc.)

Richard + Jo Ann Bowers
 170-619 (for sections)
 Tot. 134.911 Ac. (13, 14, 24)

Note:
 Ac.'s shown in pencil
 have been roughly
 proportionally calc.
 and shown for
 information only

City of Logan
 122-339
 18.01 Ac.

City of Logan
 122-339
 10.00 Ac.
 Lot 10 Pt.
 Helen Taylor et al
 198-352

FRAC. LOT 10
 (40.34 Ac. Calc.)

2605 Pt.
 (24.59 Ac. Calc.)

Names, V.P.'s Land #3's have
 been checked ready to ink
 Card #3
 157, 210, 211, 164, 165
 2605-2607 incl.
 33

33