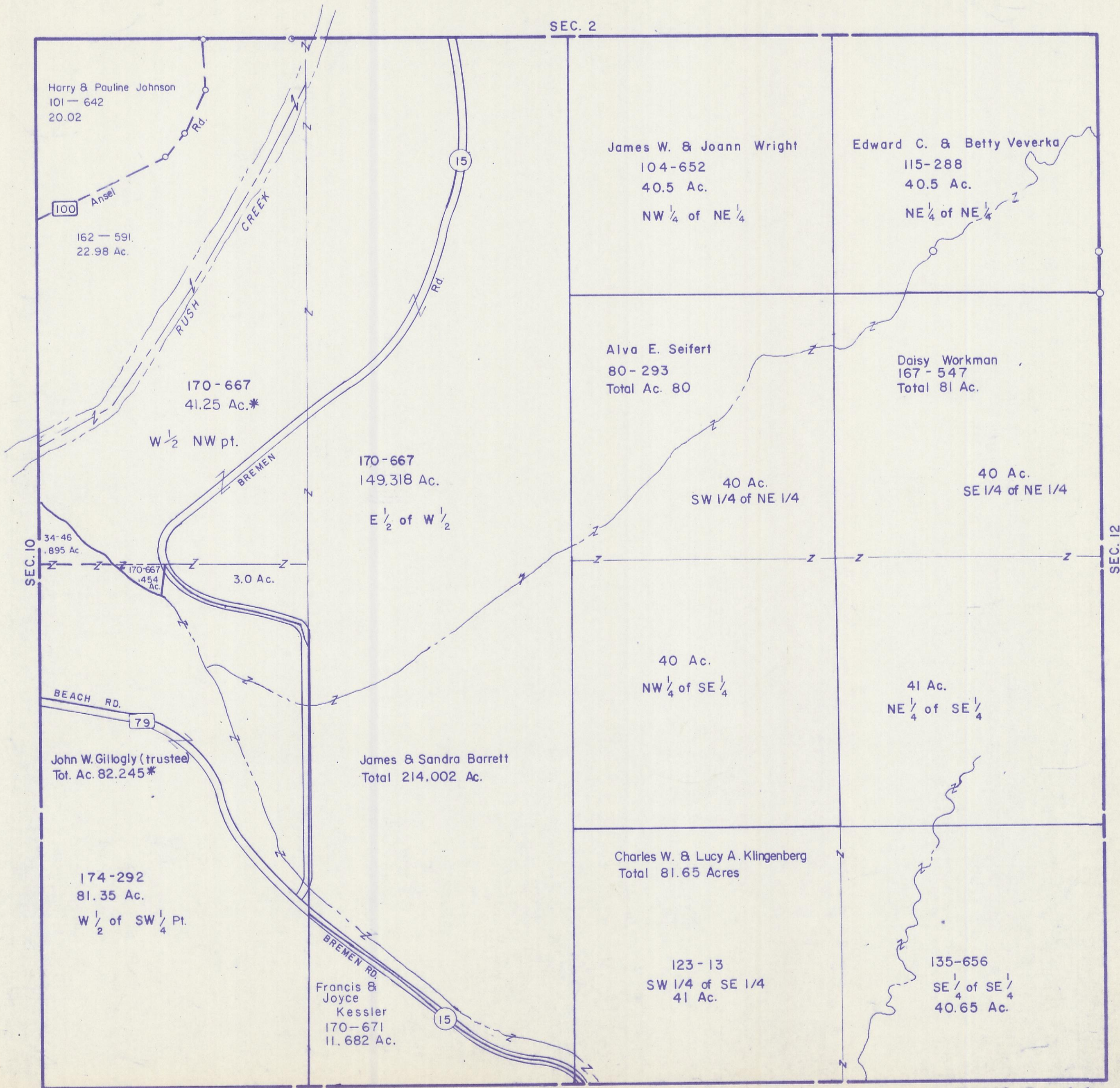


HOCKING COUNTY

SEC. II T. 15 R. 17

MARION TWP.

Scale 1"=400'



Harry & Pauline Johnson
101-642
20.02

100 Ansel
162-591
22.98 Ac.

170-667
41.25 Ac.*

W 1/2 NW pt.

170-667
149.318 Ac.
E 1/2 of W 1/2

34-46
.895 Ac.

170-667
.454 Ac.
3.0 Ac.

BEACH RD.
79

John W. Gillogly (trustee)
Tot. Ac. 82.245*

174-292
81.35 Ac.
W 1/2 of SW 1/4 Pt.

BREMEN RD.
Francis & Joyce Kessler
170-671
11.682 Ac.

James W. & Joann Wright
104-652
40.5 Ac.
NW 1/4 of NE 1/4

Edward C. & Betty Veverka
115-288
40.5 Ac.
NE 1/4 of NE 1/4

Alva E. Seifert
80-293
Total Ac. 80

Daisy Workman
167-547
Total 81 Ac.

40 Ac.
SW 1/4 of NE 1/4

40 Ac.
SE 1/4 of NE 1/4

40 Ac.
NW 1/4 of SE 1/4

41 Ac.
NE 1/4 of SE 1/4

James & Sandra Barrett
Total 214.002 Ac.

Charles W. & Lucy A. Klingenberg
Total 81.65 Acres

123-13
SW 1/4 of SE 1/4
41 Ac.

135-656
SE 1/4 of SE 1/4
40.65 Ac.

SEC. 2

SEC. 10

SEC. 12

SEC. 14

SEC II