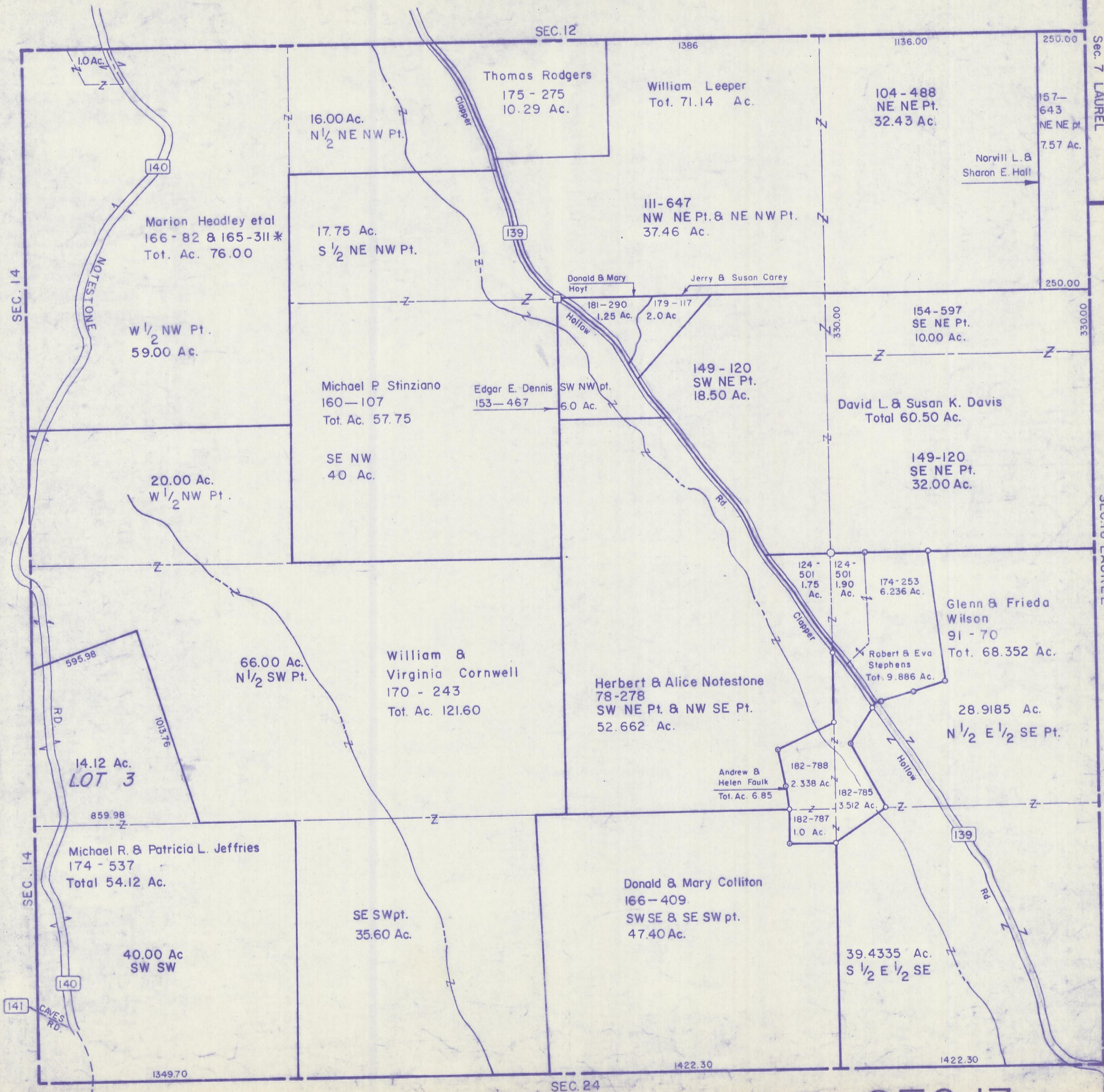


HOCKING COUNTY

Sec. 13 T12 R19

PERRY TWP.

Scale: 1" = 400'



SEC. 13

Sec. 7 LAUREL

SEC. 18 LAUREL

SEC. 14

SEC. 14

SEC. 12

SEC. 24

1.0 Ac.

140

NOTESTONE

Marion Headley et al  
166-82 & 165-311\*  
Tot. Ac. 76.00

W 1/2 NW Pt.  
59.00 Ac.

20.00 Ac.  
W 1/2 NW Pt.

595.98

14.12 Ac.  
LOT 3

859.98

Michael R. & Patricia L. Jeffries  
174-537  
Total 54.12 Ac.

40.00 Ac  
SW SW

140

141  
CAVES RD.

1349.70

16.00 Ac.  
N 1/2 NE NW Pt.

17.75 Ac.  
S 1/2 NE NW Pt.

Michael P. Stinziano  
160-107  
Tot. Ac. 57.75

SE NW  
40 Ac.

66.00 Ac.  
N 1/2 SW Pt.

William &  
Virginia Cornwell  
170-243  
Tot. Ac. 121.60

SE SWpt.  
35.60 Ac.

SEC. 12

Thomas Rodgers  
175-275  
10.29 Ac.

William Leeper  
Tot. 71.14 Ac.

III-647  
NW NE Pt. & NE NW Pt.  
37.46 Ac.

Donald & Mary  
Hoyt

181-290  
1.25 Ac.

Jerry & Susan Carey

179-117  
2.0 Ac.

Edgar E. Dennis  
153-467  
6.0 Ac.

149-120  
SW NE Pt.  
18.50 Ac.

330.00

154-597  
SE NE Pt.  
10.00 Ac.

David L. & Susan K. Davis  
Total 60.50 Ac.

149-120  
SE NE Pt.  
32.00 Ac.

124-501  
1.75 Ac.

124-501  
1.90 Ac.

174-253  
6.236 Ac.

Glenn & Frieda  
Wilson  
91-70  
Tot. 68.352 Ac.

Robert & Eva  
Stephens  
Tot. 9.886 Ac.

28.9185 Ac.  
N 1/2 E 1/2 SE Pt.

Andrew &  
Helen Faulk  
Tot. Ac. 6.85

182-788  
2.338 Ac.

182-785  
3.512 Ac.

182-787  
1.0 Ac.

Donald & Mary Colliton  
166-409.  
SW SE & SE SW pt.  
47.40 Ac.

39.4335 Ac.  
S 1/2 E 1/2 SE

1422.30

1422.30

250.00

157-643  
NE NE pt.  
7.57 Ac.

Norvill L. &  
Sharon E. Hall

250.00

330.00

330.00

330.00

1422.30