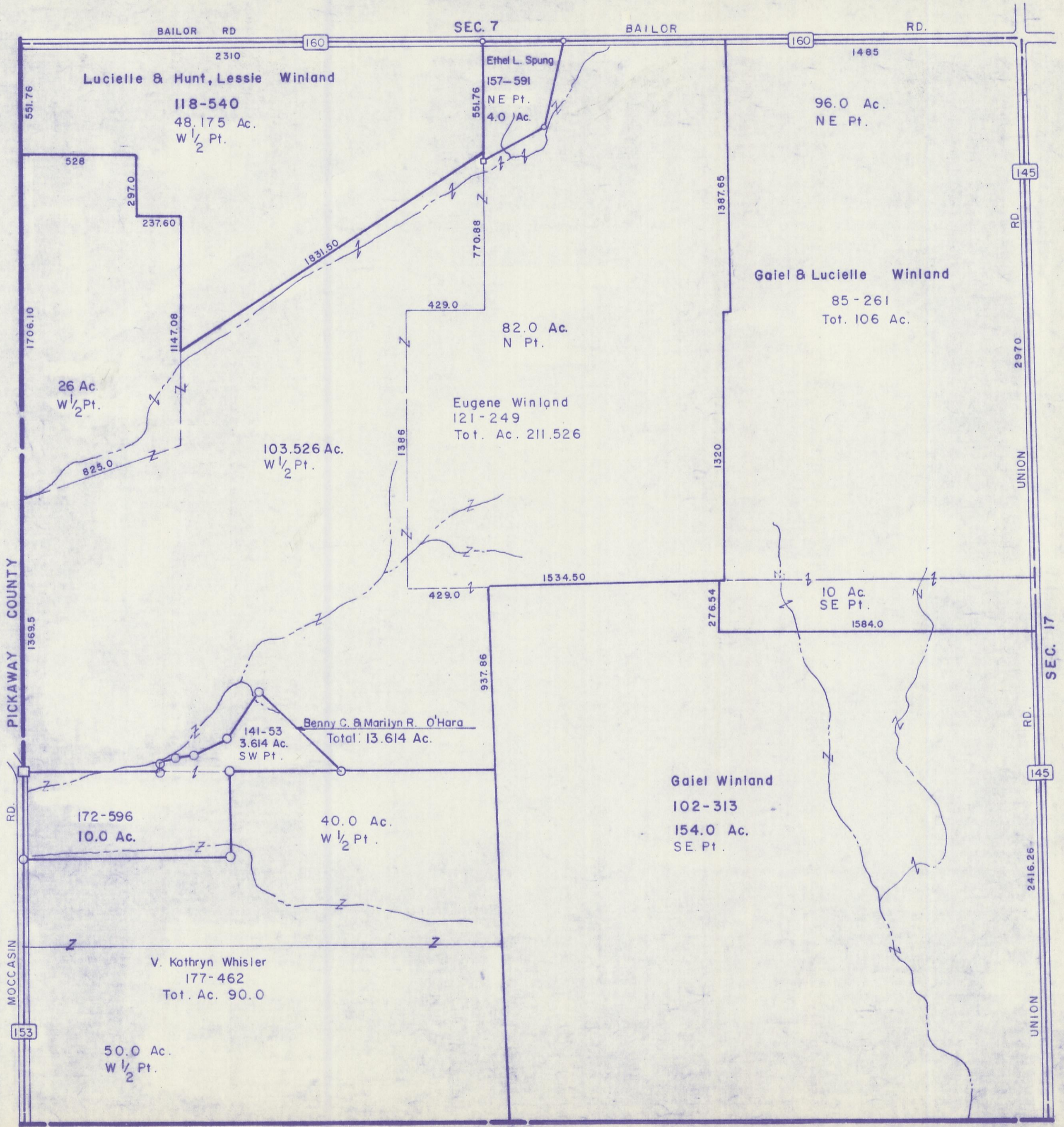


HOCKING COUNTY

SEC. 18 T.12 R.19

PERRY TWP.

Scale 1"=400'



BAILOR RD. 2310 160 1485 BAILOR RD. 160

Lucielle & Hunt, Lessie Winland
118-540
48.175 Ac.
W 1/2 Pt.

Ethel L. Spung
157-591
NE Pt.
4.0 Ac.

96.0 Ac.
NE Pt.

Gael & Lucielle Winland
85-261
Tot. 106 Ac.

82.0 Ac.
N Pt.

Eugene Winland
121-249
Tot. Ac. 211.526

103.526 Ac.
W 1/2 Pt.

10 Ac.
SE Pt.

Benny C. & Marilyn R. O'Hara
141-53
3.614 Ac.
SW Pt.
Total: 13.614 Ac.

Gael Winland
102-313
154.0 Ac.
SE Pt.

V. Kathryn Whisler
177-462
Tot. Ac. 90.0

50.0 Ac.
W 1/2 Pt.

PICKAWAY COUNTY 1369.5 145 RD. 2970 UNION RD. 145 2416.26 UNION

MOCCASIN RD. 153

SEC. 19

SEC 18