

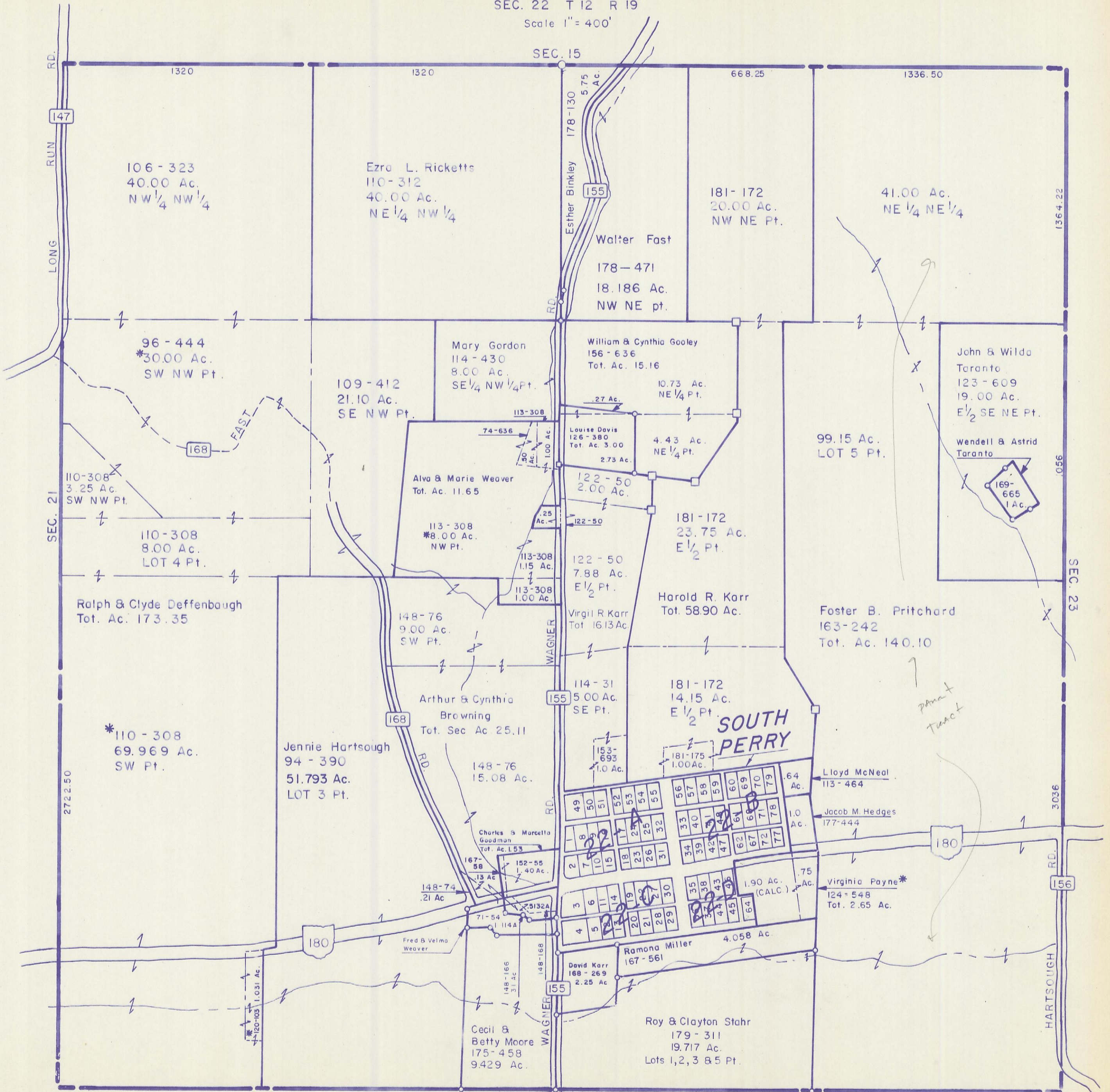
HOCKING COUNTY

PERRY TWP.

SEC. 22 T 12 R 19

Scale 1" = 400'

SEC. 15



106 - 323
40.00 Ac.
NW 1/4 NW 1/4

Ezra L. Ricketts
110-312
40.00 Ac.
NE 1/4 NW 1/4

181-172
20.00 Ac.
NW NE Pt.

41.00 Ac.
NE 1/4 NE 1/4

96 - 444
*30.00 Ac.
SW NW Pt.

109-412
21.10 Ac.
SE NW Pt.

Mary Gordon
114-430
8.00 Ac.
SE 1/4 NW 1/4 Pt.

William & Cynthia Gooley
156-636
Tot. Ac. 15.16

John & Wilda
Taranto
123-609
19.00 Ac.
E 1/2 SE NE Pt.

110-308
3.25 Ac.
SW NW Pt.

110-308
8.00 Ac.
LOT 4 Pt.

Alva & Marie Weaver
Tot. Ac. 11.65

Louise Davis
126-380
Tot. Ac. 3.00

99.15 Ac.
LOT 5 Pt.

Wendell & Astrid
Taranto

Ralph & Clyde Deffenbaugh
Tot. Ac. 173.35

113-308
*8.00 Ac.
NW Pt.

122-50
2.00 Ac.

181-172
23.75 Ac.
E 1/2 Pt.

169-665
1 Ac.

*110-308
69.969 Ac.
SW Pt.

Jennie Hartsough
94-390
51.793 Ac.
LOT 3 Pt.

148-76
9.00 Ac.
SW Pt.

122-50
7.88 Ac.
E 1/2 Pt.

Harold R. Karr
Tot. 58.90 Ac.

Foster B. Pritchard
163-242
Tot. Ac. 140.10

Arthur & Cynthia
Browning
Tot. Sec. Ac. 25.11

114-31
5.00 Ac.
SE Pt.

181-172
14.15 Ac.
E 1/2 Pt.

SOUTH PERRY

148-76
15.08 Ac.

153-693
1.0 Ac.

181-175
1.00 Ac.

Lloyd McNeal
113-464

Charles & Marcella
Goodman
Tot. Ac. 1.53



Jacob M. Hedges
177-444

148-74
.21 Ac.

71-54
1.14 Ac.

152-55
1.40 Ac.

1.90 Ac.
(CALC.)

Virginia Payne*
124-548
Tot. 2.65 Ac.

Fred & Velma
Weaver

David Karr
168-269
2.25 Ac.

Ramona Miller
167-561

4.058 Ac.

Cecil & Betty Moore
175-458
9.429 Ac.

Roy & Clayton Stahr
179-311
19.717 Ac.
Lots 1, 2, 3 & 5 Pt.

SEC. 27

SEC. 22