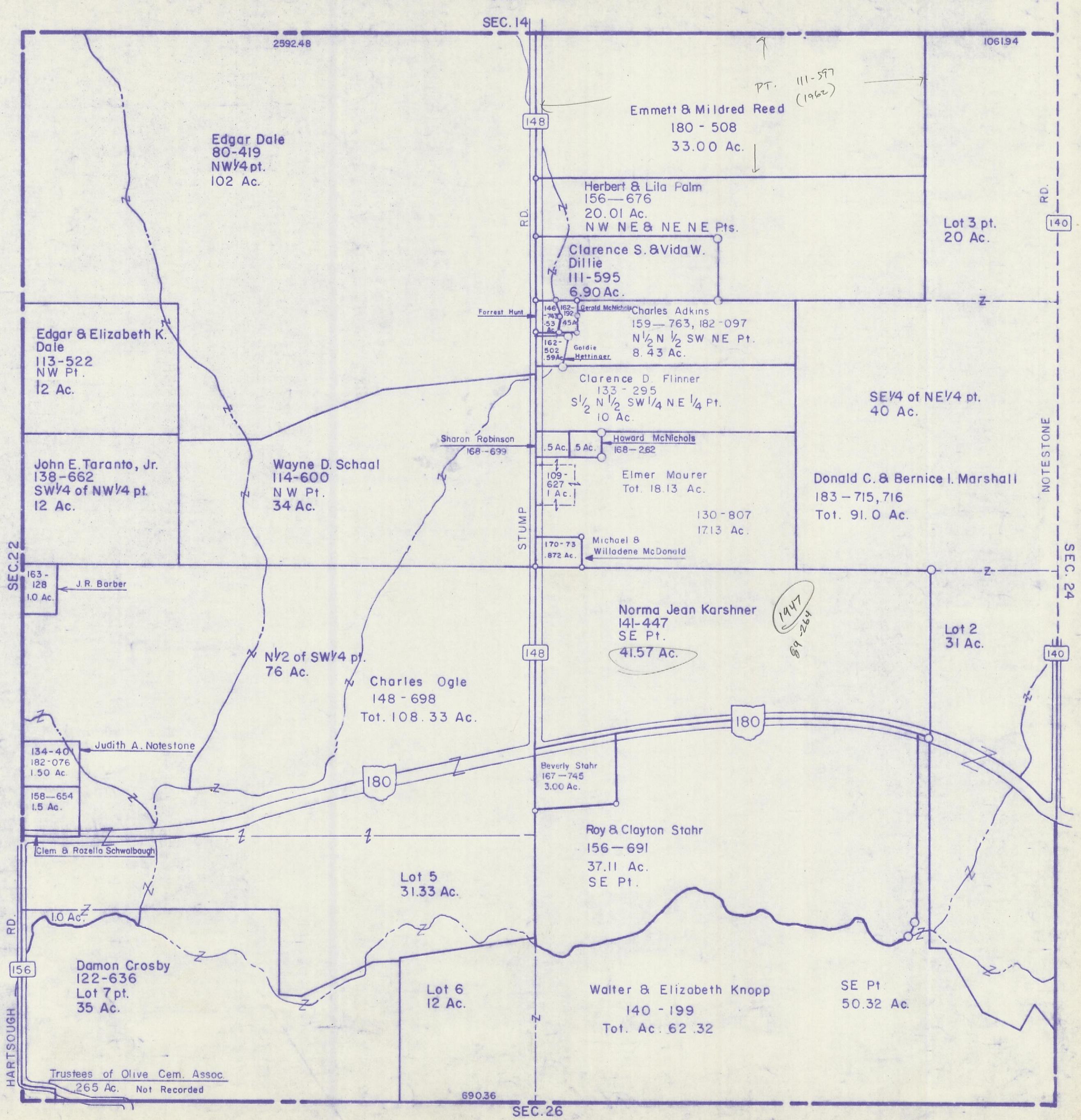


HOCKING COUNTY

Sec.23 T12 R19

PERRY TWP.

Scale: 1"=400'



Edgar Dale
80-419
NW 1/4 pt.
102 Ac.

Emmett & Mildred Reed
180 - 508
33.00 Ac.

Herbert & Lila Palm
156-676
20.01 Ac.
NW NE & NE NE Pts.

Clarence S. & Vida W.
Dillie
111-595
6.90 Ac.

Charles Adkins
159-763, 182-097
N 1/2 N 1/2 SW NE Pt.
8.43 Ac.

Clarence D. Flinger
133-295
S 1/2 N 1/2 SW 1/4 NE 1/4 Pt.
10 Ac.

Howard McNichols
168-262
5 Ac.

Elmer Maurer
Tot. 18.13 Ac.

Michael & Willadene McDonald
170-73
872 Ac.

Donald C. & Bernice I. Marshall
183-715, 716
Tot. 91.0 Ac.

Edgar & Elizabeth K.
Dale
113-522
NW Pt.
12 Ac.

John E. Taranto, Jr.
138-662
SW 1/4 of NW 1/4 pt.
12 Ac.

Wayne D. Schaaf
114-600
NW Pt.
34 Ac.

J.R. Barber
163-128
1.0 Ac.

N 1/2 of SW 1/4 pt.
76 Ac.

Charles Ogle
148-698
Tot. 108.33 Ac.

Judith A. Notestone
134-40
182-076
1.50 Ac.

158-654
1.5 Ac.

Clem & Rozella Schwalbaugh
1.0 Ac.

Lot 5
31.33 Ac.

Damon Crosby
122-636
Lot 7 pt.
35 Ac.

Lot 6
12 Ac.

Roy & Clayton Stahr
156-691
37.11 Ac.
SE Pt.

Walter & Elizabeth Knopp
140-199
Tot. Ac. 62.32

SE Pt
50.32 Ac.

Trustees of Olive Cem. Assoc.
265 Ac. Not Recorded

SEC. 23