

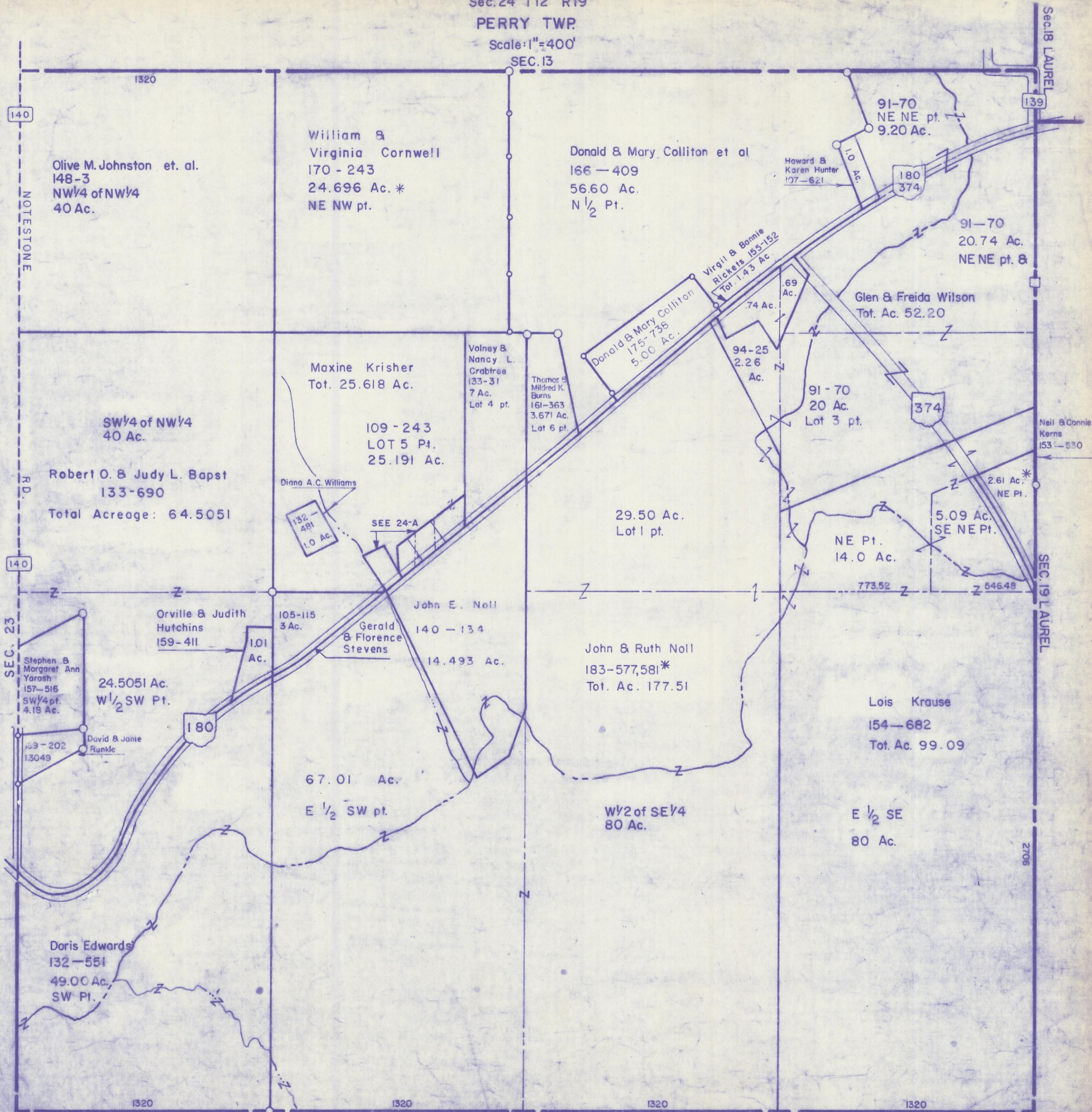
HOCKING COUNTY

Sec. 24 T12 R19

PERRY TWP.

Scale: 1"=400'

SEC. 13



Olive M. Johnston et. al.
148-3
NW 1/4 of NW 1/4
40 Ac.

William &
Virginia Cornwell
170 - 243
24.696 Ac. *
NE NW pt.

Donald & Mary Colliton et al
166 - 409
56.60 Ac.
N 1/2 Pt.

91-70
NE NE pt.
9.20 Ac.

Howard &
Karen Hunter
107-621
1.0 Ac.

180
374

91-70
20.74 Ac.
NE NE pt. &

Glen & Freida Wilson
Tot. Ac. 52.20

Maxine Krisher
Tot. 25.618 Ac.

Volney &
Nancy L.
Crabtree
133-31
7 Ac.
Lot 4 pt.

Thomas &
Mildred K.
Burns
161-363
3.671 Ac.
Lot 6 pt.

Donald & Mary Colliton
175-738
5.00 Ac.

Virgil & Bonnie
Ricketts 155-152
Tot. 1.43 Ac.

.69
Ac.

.74 Ac.

94-25
2.26
Ac.

91-70
20 Ac.
Lot 3 pt.

Neil & Connie
Kerns
153-530

SW 1/4 of NW 1/4
40 Ac.

109-243
LOT 5 Pt.
25.191 Ac.

Robert O. & Judy L. Bapst
133-690
Total Acreage: 64.5051

Diana A.C. Williams
132-481
1.0 Ac.

SEE 24-A

29.50 Ac.
Lot 1 pt.

5.09 Ac.
SE NE Pt.

NE Pt.
14.0 Ac.

2.61 Ac.*
NE Pt.

RD.

SEC. 23

Orville & Judith
Hutchins
159-411
1.01
Ac.

105-115
3 Ac.

Gerald
& Florence
Stevens

John E. Noll
140 - 134
14.493 Ac.

John & Ruth Noll
183-577,581*
Tot. Ac. 177.51

Stephen &
Margaret Ann
Yarosh
157-516
SW 1/4 pt.
4.18 Ac.

24.5051 Ac.
W 1/2 SW Pt.

169-202
13049

David & Janie
Runkle

Lois Krause
154-682
Tot. Ac. 99.09

67.01 Ac.
E 1/2 SW pt.

W 1/2 of SE 1/4
80 Ac.

E 1/2 SE
80 Ac.

Doris Edwards
132-551
49.00 Ac.
SW Pt.

2706

1320

1320

1320

1320

SEC. 25

SEC. 24