

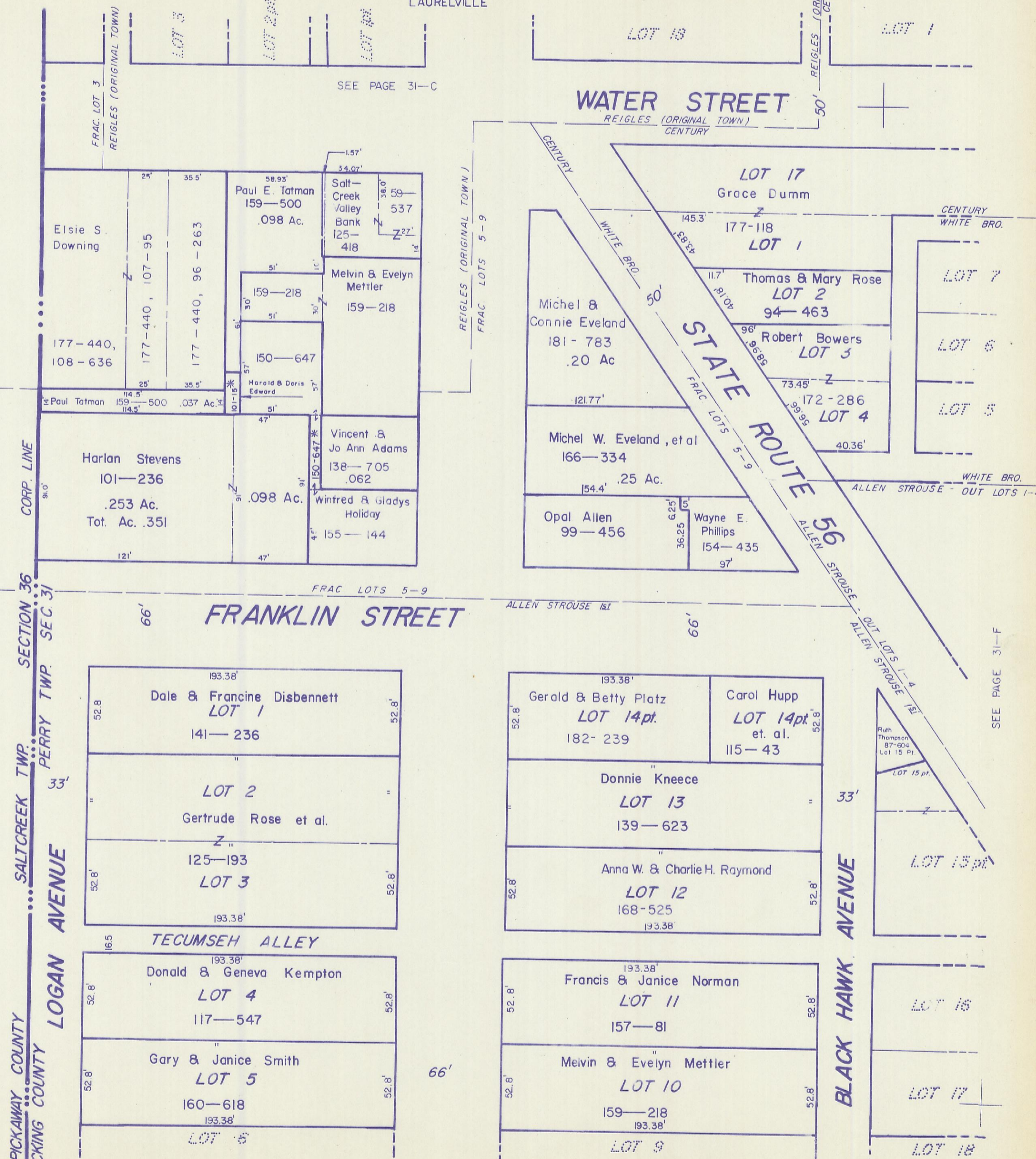
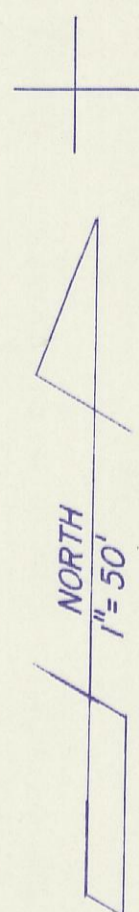
HOCKING COUNTY

PERRY TWP.

SEC. 31 T 12 R 19

LAURELVILLE

31-E



SEE PAGE 31-C

SEE PAGE 31-F

PICKAWAY COUNTY  
HOCKING COUNTY  
SALT CREEK TWP.  
PERRY TWP.  
SECTION 36  
SECTION 31

SEE PAGE 31-G

LAURELVILLE 31-E

CENTURY PT., REIGLES, ALLEN STROUSE 1ST PT.