

HOCKING COUNTY

PERRY TWP.

SEC. 31 T 12 R 19

31-1

ALLEN STROUSE 2nd
ASA STROUSE 1st

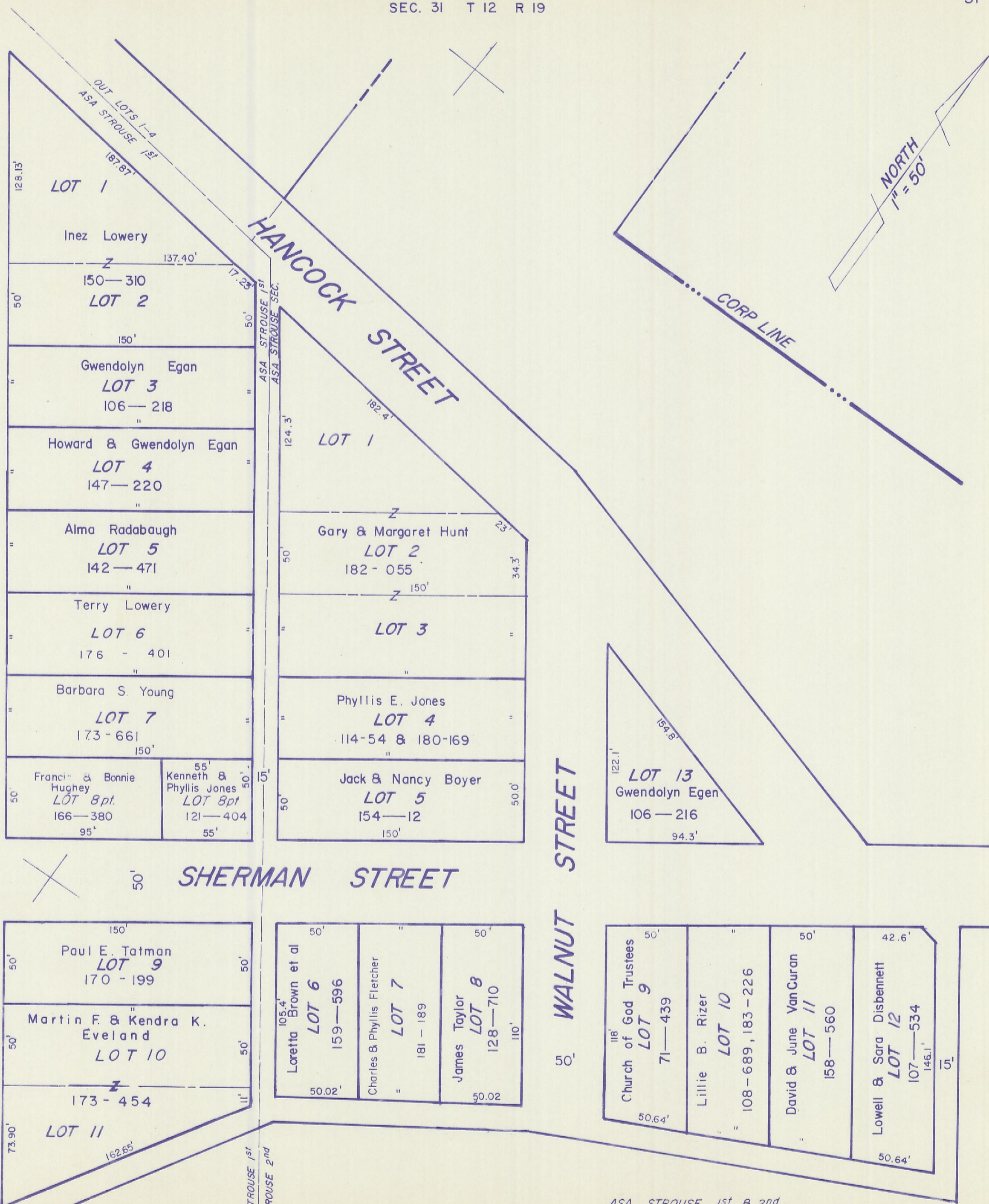
SEE PAGE 31-H

STATE ROUTE 56

ALLEN STROUSE 2nd
ASA STROUSE 1st

SEE PAGE 31-K

ASA STROUSE 1st
ASA STROUSE 2nd



NORTH
1" = 50'

CORP LINE

SHERMAN STREET

WALNUT STREET

HANCOCK STREET

ASA STROUSE 1st, & 2nd

LAURELVILLE 31-1