

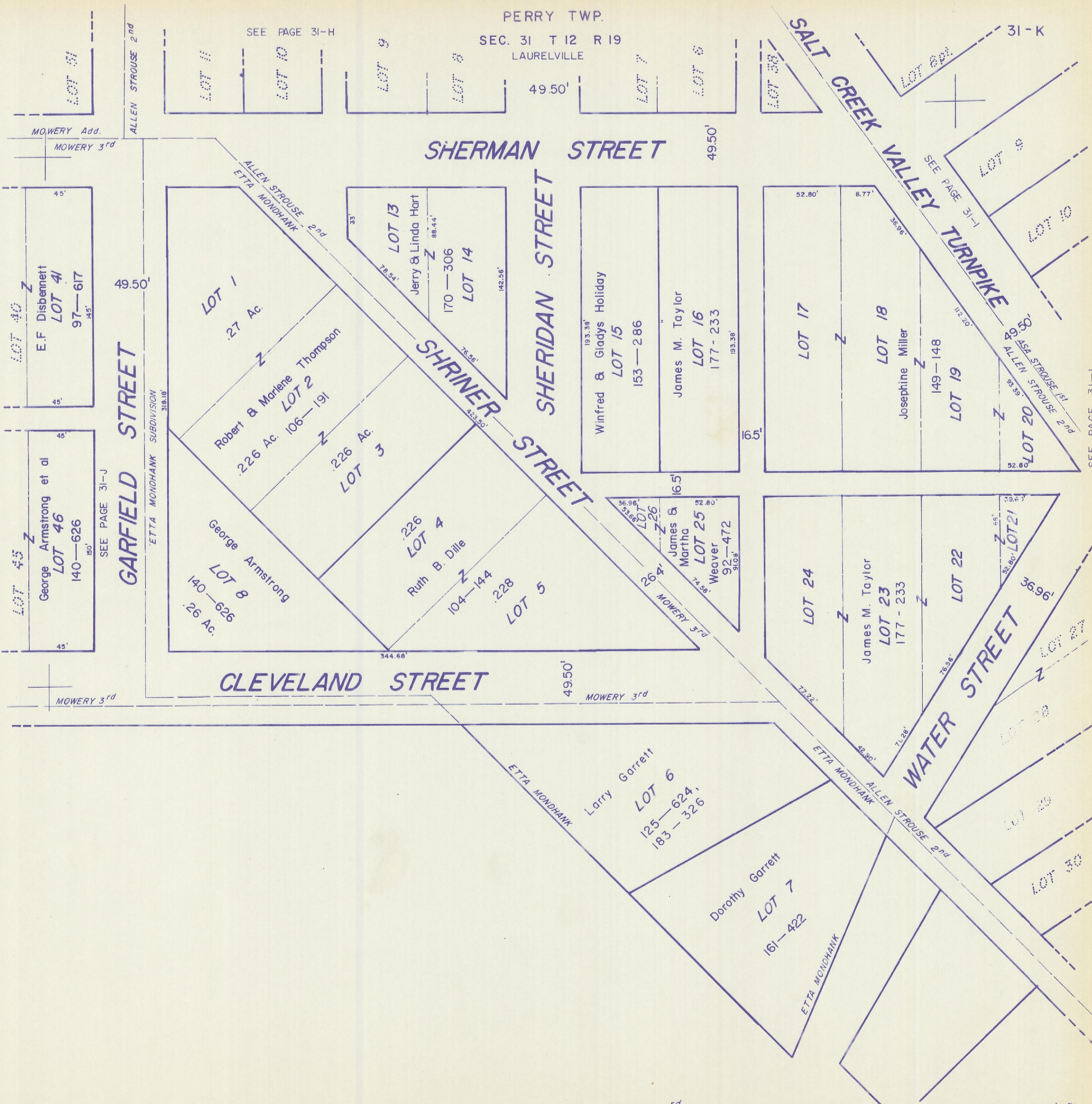
HOCKING COUNTY

PERRY TWP.

SEC. 31 T 12 R 19  
LAURELVILLE

SEE PAGE 31-H

31-K



MOWERY 3<sup>rd</sup> Pt., ETTA MONDHANK SUB.,

ALLEN STROUSE 2<sup>nd</sup> Pt.

LAURELVILLE 31-K