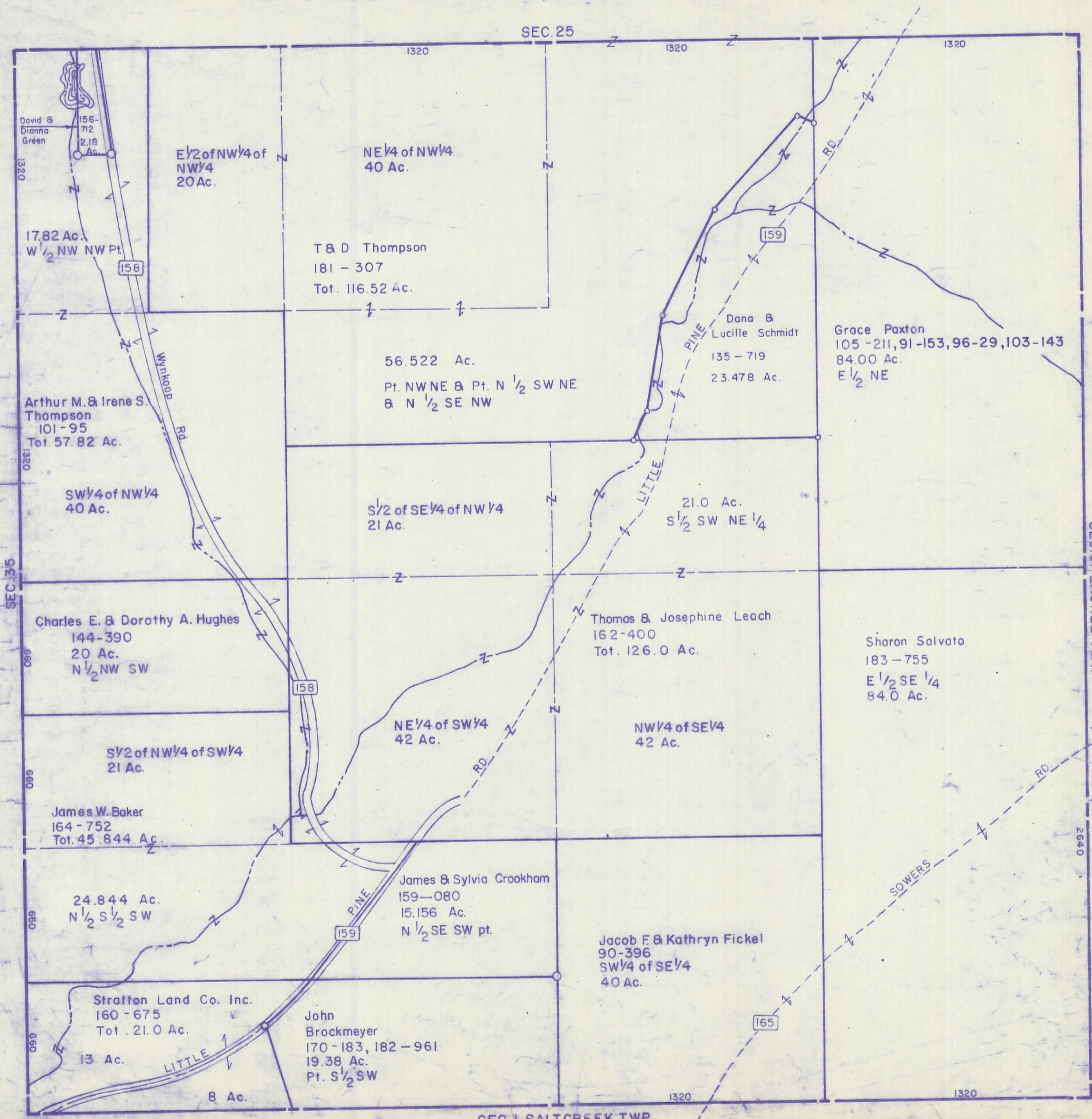


HOCKING COUNTY

Sec. 36 T12 R19

PERRY TWP.

Scale: 1" = 400'



SEC. 25

1320

1320

1320

David & Dianna Green  
156-712  
2.18 Ac.

E 1/2 of NW 1/4 of NW 1/4  
20 Ac.

NE 1/4 of NW 1/4  
40 Ac.

T & D Thompson  
181 - 307  
Tot. 116.52 Ac.

17.82 Ac.  
W 1/2 NW NW Pt.

159

Dana & Lucille Schmidt  
135 - 719  
23.478 Ac.

Grace Paxton  
105 - 211, 91 - 153, 96 - 29, 103 - 143  
84.00 Ac.  
E 1/2 NE

Arthur M. & Irene S. Thompson  
101 - 95  
Tot. 57.82 Ac.

56.522 Ac.  
Pt. NWNE & Pt. N 1/2 SW NE  
& N 1/2 SE NW

SW 1/4 of NW 1/4  
40 Ac.

S 1/2 of SE 1/4 of NW 1/4  
21 Ac.

21.0 Ac.  
S 1/2 SW NE 1/4

SEC. 35

Charles E. & Dorothy A. Hughes  
144 - 390  
20 Ac.  
N 1/2 NW SW

Thomas & Josephine Leach  
162 - 400  
Tot. 126.0 Ac.

Sharon Salvato  
183 - 755  
E 1/2 SE 1/4  
84.0 Ac.

S 1/2 of NW 1/4 of SW 1/4  
21 Ac.

NE 1/4 of SW 1/4  
42 Ac.

NW 1/4 of SE 1/4  
42 Ac.

James W. Baker  
164 - 752  
Tot. 45.844 Ac.

24.844 Ac.  
N 1/2 S 1/2 SW

James & Sylvia Crookham  
159 - 080  
15.156 Ac.  
N 1/2 SE SW pt.

Jacob F. & Kathryn Fickel  
90 - 396  
SW 1/4 of SE 1/4  
40 Ac.

Stratton Land Co. Inc.  
160 - 675  
Tot. 21.0 Ac.

John Brockmeyer  
170 - 183, 182 - 961  
19.38 Ac.  
Pt. S 1/2 SW

13 Ac.

8 Ac.

165

SEC. 1 SALT CREEK TWP.

SEC. 36 (BOTTOM TIER)

SEC. 31 LAUREL TWP.

2640

1320

1320