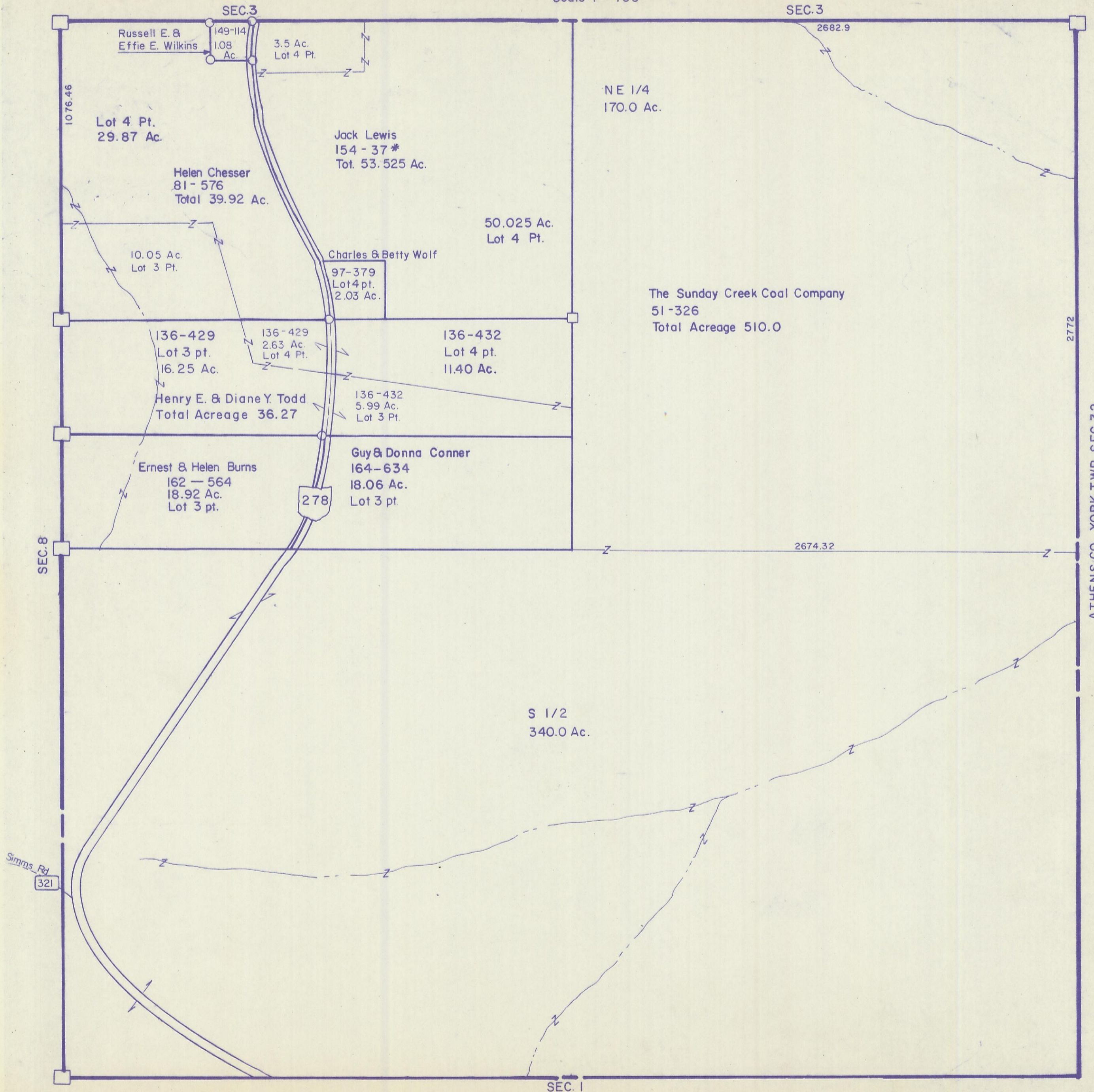


HOCKING COUNTY

Sec.2 T12 R16

STARR TWP.

Scale: 1"=400'



Russell E. & Effie E. Wilkins
149-114
1.08 Ac.
3.5 Ac. Lot 4 Pt.

Lot 4 Pt.
29.87 Ac.

Helen Chesser
81-576
Total 39.92 Ac.

10.05 Ac.
Lot 3 Pt.

136-429
Lot 3 pt.
16.25 Ac.

Henry E. & Diane Y. Todd
Total Acreage 36.27

Ernest & Helen Burns
162-564
18.92 Ac.
Lot 3 pt.

Jack Lewis
154-37*
Tot. 53.525 Ac.

50.025 Ac.
Lot 4 Pt.

Charles & Betty Wolf
97-379
Lot 4 pt.
2.03 Ac.

136-429
2.63 Ac.
Lot 4 Pt.

136-432
Lot 4 pt.
11.40 Ac.

136-432
5.99 Ac.
Lot 3 Pt.

Guy & Donna Conner
164-634
18.06 Ac.
Lot 3 pt.

NE 1/4
170.0 Ac.

The Sunday Creek Coal Company
51-326
Total Acreage 510.0

S 1/2
340.0 Ac.

Simms Rd
321

278

SEC. 8

SEC. 3

SEC. 3

SEC. 1

SEC. 2

2772

ATHENS CO. YORK TWP. SEC. 32