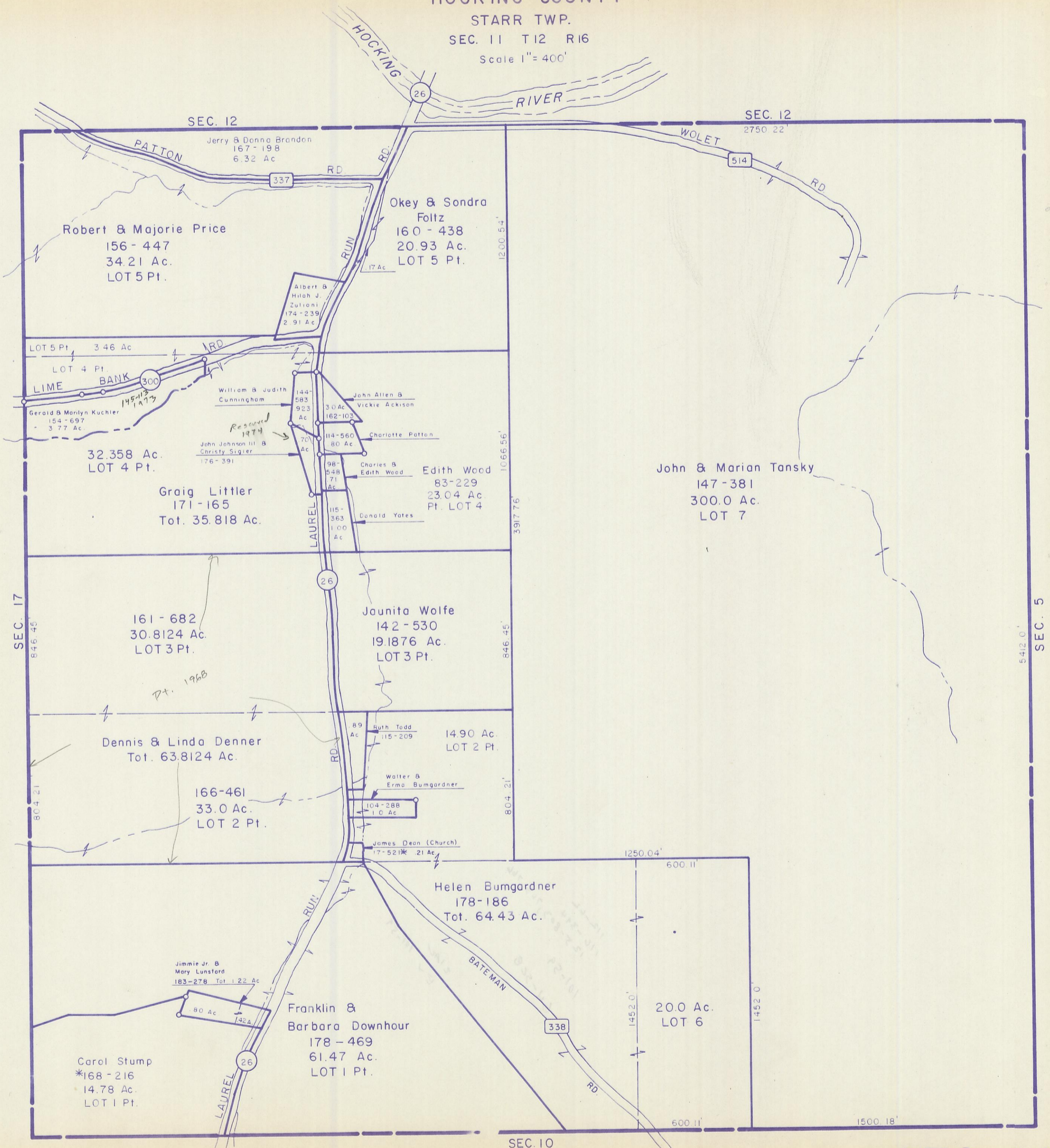


HOCKING COUNTY

STARR TWP.

SEC. 11 T12 R16

Scale 1" = 400'



SEC. 12
 Jerry & Donna Brandon
 167-198
 6.32 Ac.

Robert & Majorie Price
 156-447
 34.21 Ac.
 LOT 5 Pt.

Okey & Sondra
 Foltz
 160-438
 20.93 Ac.
 LOT 5 Pt.

LOT 5 Pt. 3.46 Ac.
 LOT 4 Pt.
 LIME BANK
 Gerald & Marilyn Kuchler
 154-697
 3.77 Ac.

William & Judith
 Cunningham
 144-583
 923
 Ac.

John Allen &
 Vickie Ackison
 30 Ac.
 162-103

John Johnson III &
 Christy Sigler
 176-391

Charlotte Patton
 114-560
 80 Ac.

32.358 Ac.
 LOT 4 Pt.

Graig Littler
 171-165
 Tot. 35.818 Ac.

Charles &
 Edith Wood
 98-548
 71
 Ac.

Edith Wood
 83-229
 23.04 Ac.
 Pt. LOT 4

John & Marian Tansky
 147-381
 300.0 Ac.
 LOT 7

Conrad Yates
 115-363
 1.00
 Ac.

161-682
 30.8124 Ac.
 LOT 3 Pt.

Jaunita Wolfe
 142-530
 19.1876 Ac.
 LOT 3 Pt.

Dennis & Linda Denner
 Tot. 63.8124 Ac.

Ruth Todd
 115-209
 14.90 Ac.
 LOT 2 Pt.

166-461
 33.0 Ac.
 LOT 2 Pt.

Walter &
 Erma Bumgardner
 104-288
 1.0 Ac.

James Dean (Church)
 17-521* 21 Ac.

Helen Bumgardner
 178-186
 Tot. 64.43 Ac.

Jimmie Jr. &
 Mary Lunsford
 183-278 Tot. 1.22 Ac.

Franklin &
 Barbara Downhour
 178-469
 61.47 Ac.
 LOT 1 Pt.

Carol Stump
 *168-216
 14.78 Ac.
 LOT 1 Pt.

20.0 Ac.
 LOT 6

SEC. 11