

HOCKING COUNTY

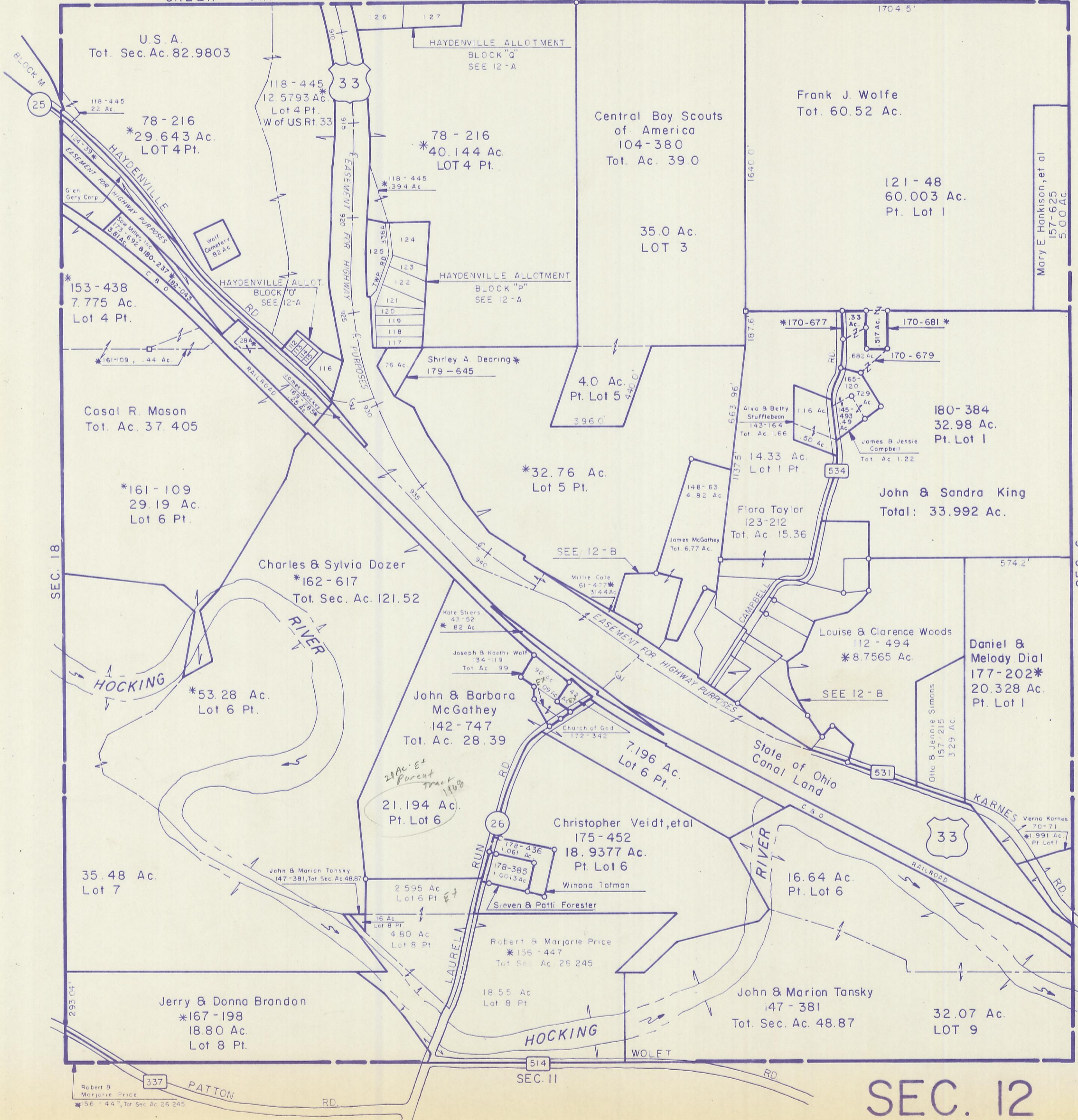
STARR TWP.

SEC. 12 T12 R16

Scale 1" = 400'

GREEN TWP.

SEC. 7



U.S.A.
Tot. Sec. Ac. 82.9803

HAYDENVILLE ALLOTMENT
BLOCK "Q"
SEE 12-A

Frank J. Wolfe
Tot. 60.52 Ac.

78-216
*29.643 Ac.
LOT 4 Pt.

78-216
*40.144 Ac.
LOT 4 Pt.

Central Boy Scouts
of America
104-380
Tot. Ac. 39.0

121-48
60.003 Ac.
Pt. Lot 1

Mary E. Hankison, et al
157-625
5.00 Ac.

*153-438
7.775 Ac.
Lot 4 Pt.

HAYDENVILLE ALLOTMENT
BLOCK "P"
SEE 12-A

35.0 Ac.
LOT 3

Casal R. Mason
Tot. Ac. 37.405

Shirley A. Dearing *
179-645
76 Ac.

4.0 Ac.
Pt. Lot 5

*170-677
*170-681 *
*170-679

180-384
32.98 Ac.
Pt. Lot 1

*161-109
29.19 Ac.
Lot 6 Pt.

*32.76 Ac.
Lot 5 Pt.

Alva & Betty
Stufflebean
143-164
Tot. Ac. 1.66

John & Sandra King
Total: 33.992 Ac.

Charles & Sylvia Dozer
*162-617
Tot. Sec. Ac. 121.52

SEE 12-B

Flora Taylor
123-212
Tot. Ac. 15.36

*53.28 Ac.
Lot 6 Pt.

Kate Striers
43-52
*82 Ac.

Louise & Clarence Woods
112-494
*8.7565 Ac.

Daniel &
Melody Dial
177-202*
20.328 Ac.
Pt. Lot 1

John & Barbara
McGathey
142-747
Tot. Ac. 28.39

7.196 Ac.
Lot 6 Pt.

State of Ohio
Canal Land

35.48 Ac.
Lot 7

21.194 Ac.
Pt. Lot 6

Christopher Veidt, et al
175-452
18.9377 Ac.
Pt. Lot 6

16.64 Ac.
Pt. Lot 6

Jerry & Donna Brandon
*167-198
18.80 Ac.
Lot 8 Pt.

2.595 Ac.
Lot 6 Pt.

Robert & Marjorie Price
*156-447
Tot. Sec. Ac. 26.245

John & Marion Tansky
147-381
Tot. Sec. Ac. 48.87

32.07 Ac.
LOT 9

Robert & Marjorie Price
*156-447, Tot. Sec. Ac. 26.245

SEC. 12