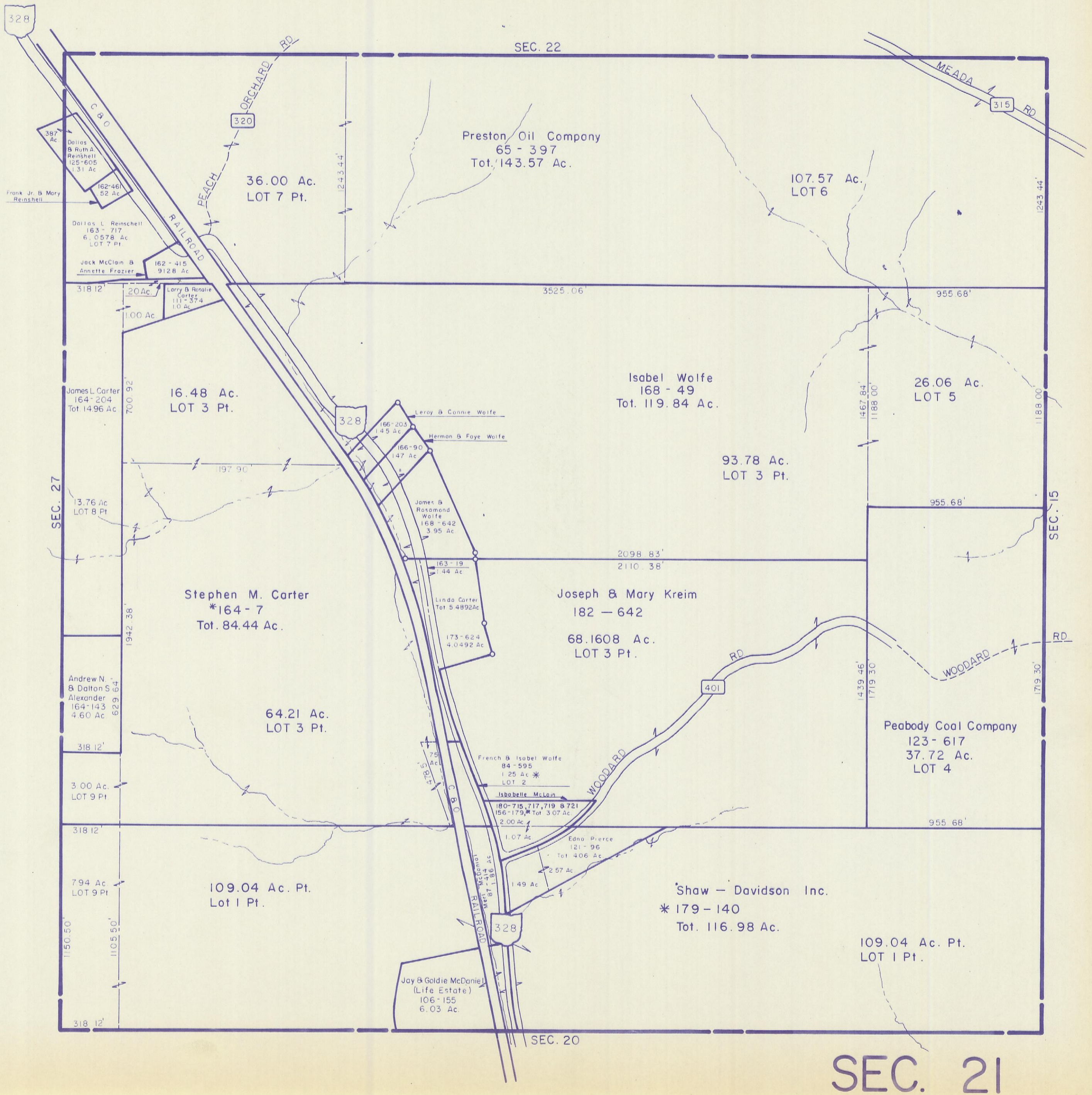


HOCKING COUNTY

STARR TWP.

SEC. 21 T12 R16

Scale 1"=400'



SEC. 22

Preston Oil Company
65 - 397
Tot. 143.57 Ac.

107.57 Ac.
LOT 6

Isabel Wolfe
168 - 49
Tot. 119.84 Ac.

26.06 Ac.
LOT 5

93.78 Ac.
LOT 3 Pt.

Stephen M. Carter
*164 - 7
Tot. 84.44 Ac.

Joseph & Mary Kreim
182 - 642
68.1608 Ac.
LOT 3 Pt.

Peabody Coal Company
123 - 617
37.72 Ac.
LOT 4

Shaw - Davidson Inc.
* 179 - 140
Tot. 116.98 Ac.

109.04 Ac. Pt.
LOT 1 Pt.

109.04 Ac. Pt.
Lot 1 Pt.

36.00 Ac.
LOT 7 Pt.

16.48 Ac.
LOT 3 Pt.

64.21 Ac.
LOT 3 Pt.

Jay & Goldie McDaniel
(Life Estate)
106 - 155
6.03 Ac.

SEC. 20

SEC. 21

SEC. 27

SEC. 15

328

320

315

328

328

401