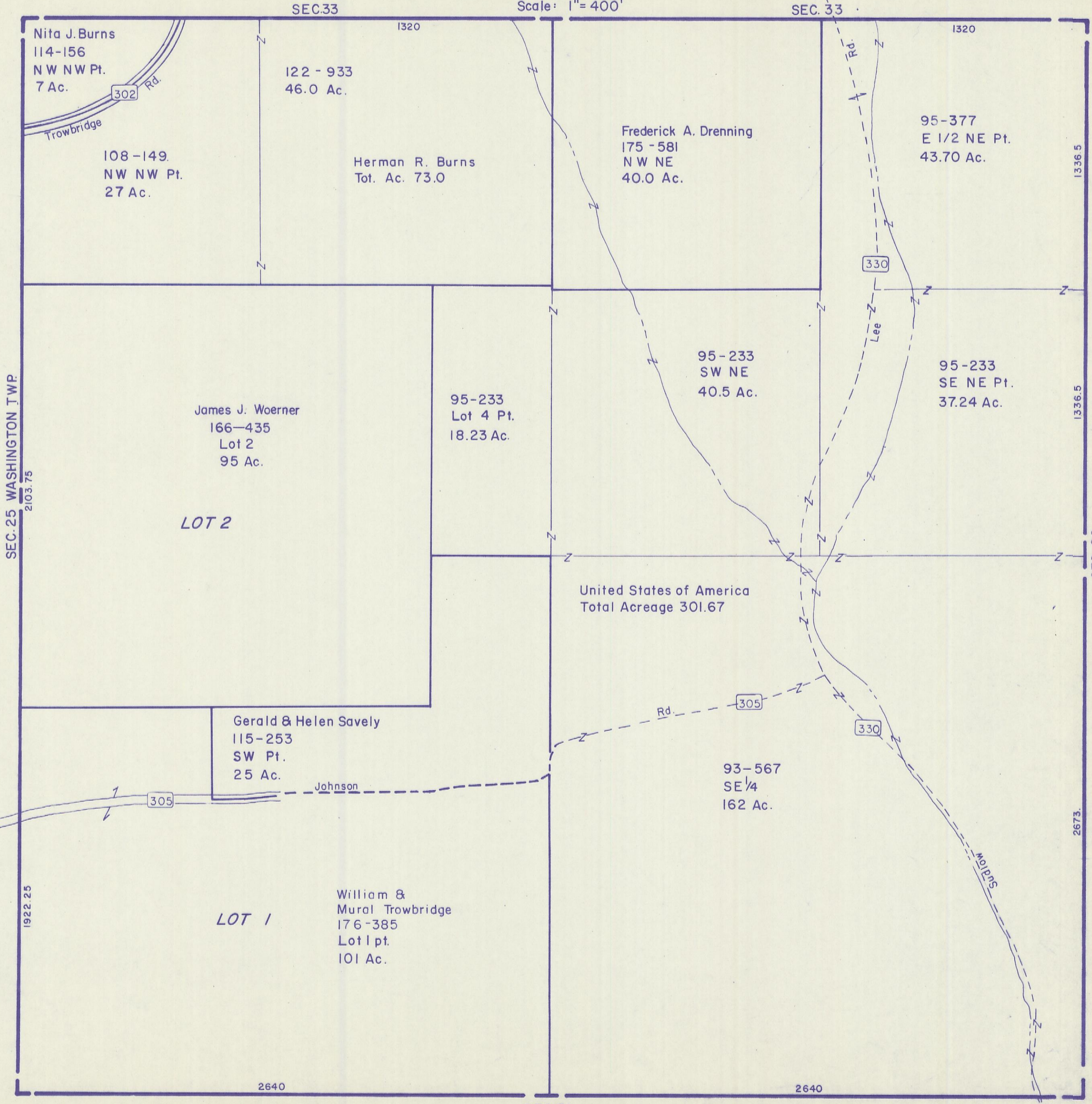


HOCKING COUNTY

Sec. 32 T 12 R 16

STARR TWP.

Scale: 1" = 400'



Nita J. Burns  
114-156  
NW NW Pt.  
7 Ac.

108-149  
NW NW Pt.  
27 Ac.

122-933  
46.0 Ac.

Herman R. Burns  
Tot. Ac. 73.0

Frederick A. Drenning  
175-581  
NW NE  
40.0 Ac.

95-377  
E 1/2 NE Pt.  
43.70 Ac.

James J. Woerner  
166-435  
Lot 2  
95 Ac.

LOT 2

95-233  
Lot 4 Pt.  
18.23 Ac.

95-233  
SW NE  
40.5 Ac.

95-233  
SE NE Pt.  
37.24 Ac.

United States of America  
Total Acreage 301.67

Gerald & Helen Savely  
115-253  
SW Pt.  
25 Ac.

93-567  
SE 1/4  
162 Ac.

LOT 1

William &  
Mural Trowbridge  
176-385  
Lot 1 pt.  
101 Ac.

SEC. 32