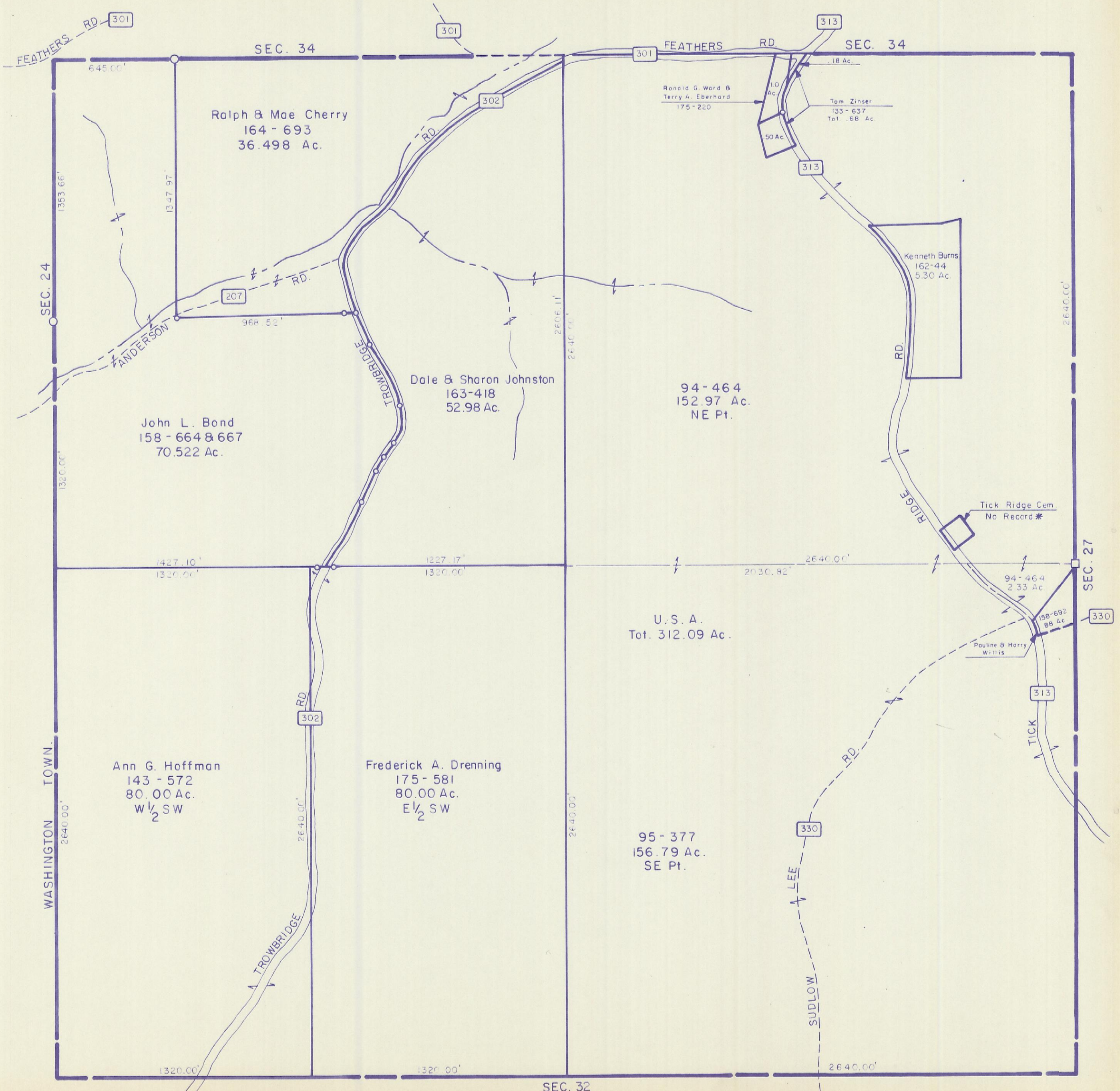


HOCKING COUNTY

STARR TWP.

SEC. 33 T12 R16

Scale 1" = 400'



Ralph & Mae Cherry
164 - 693
36.498 Ac.

John L. Bond
158 - 664 & 667
70.522 Ac.

Ann G. Hoffman
143 - 572
80.00 Ac.
W 1/2 SW

Frederick A. Drenning
175 - 581
80.00 Ac.
E 1/2 SW

Dale & Sharon Johnston
163-418
52.98 Ac.

U.S. A.
Tot. 312.09 Ac.

95 - 377
156.79 Ac.
SE Pt.

94-464
152.97 Ac.
NE Pt.

Kenneth Burns
162-44
5.30 Ac.

Ronald G. Ward &
Terry A. Eberhard
175 - 220

Tom Zinser
133 - 637
Tot. .68 Ac.

Tick Ridge Cem
No Record *

94-464
2.33 Ac.

Pauline & Harry
Willis

158-692
88 Ac.

SEC. 33