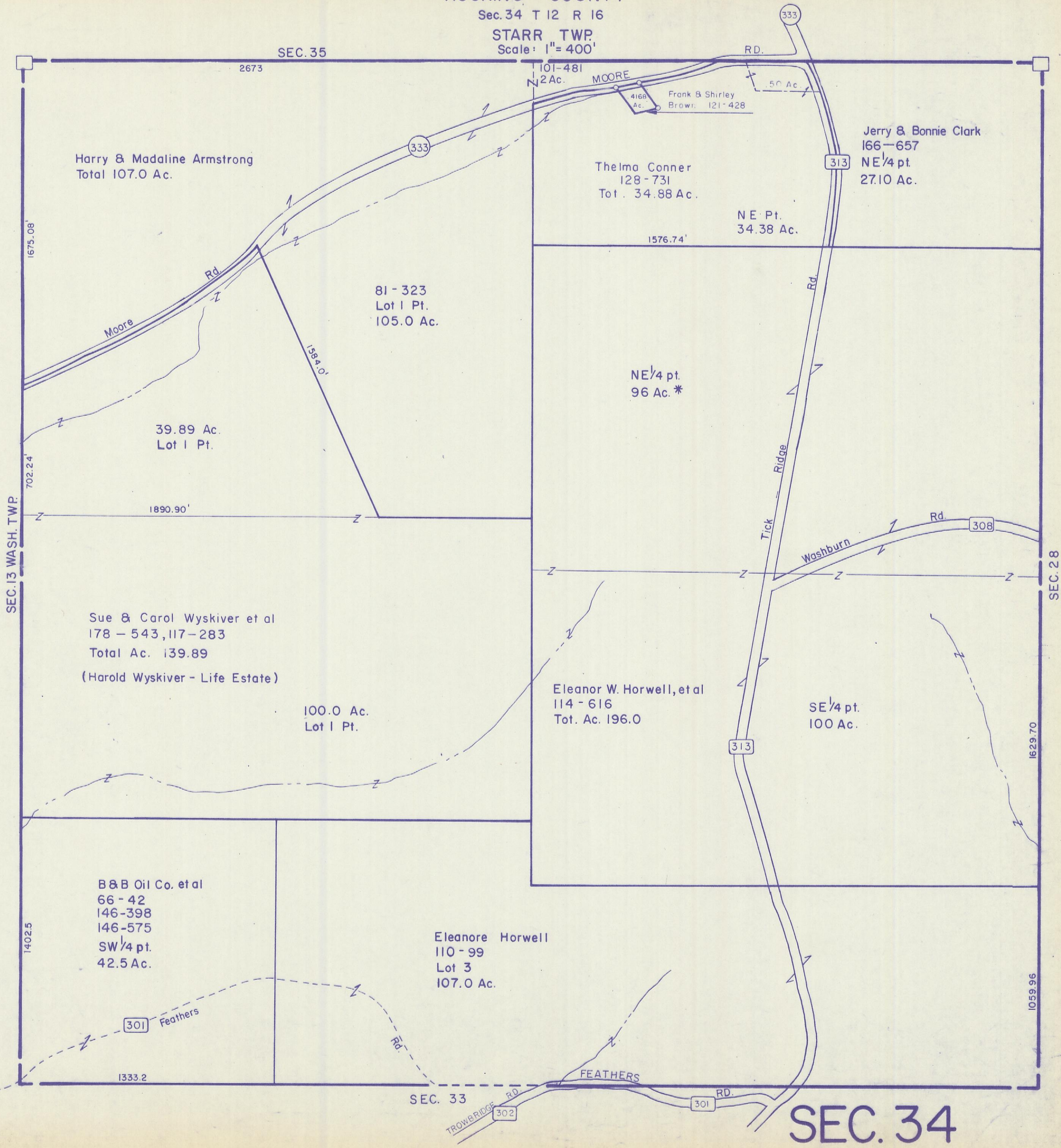


HOCKING COUNTY

Sec. 34 T 12 R 16

STARR TWP.

Scale: 1" = 400'



Harry & Madaline Armstrong
Total 107.0 Ac.

Thelma Conner
128 - 731
Tot. 34.88 Ac.

Jerry & Bonnie Clark
166 - 657
NE 1/4 pt.
27.10 Ac.

81 - 323
Lot 1 Pt.
105.0 Ac.

NE Pt.
34.38 Ac.

NE 1/4 pt.
96 Ac. *

39.89 Ac.
Lot 1 Pt.

Sue & Carol Wiskiver et al
178 - 543, 117 - 283
Total Ac. 139.89
(Harold Wiskiver - Life Estate)

100.0 Ac.
Lot 1 Pt.

Eleanor W. Horwell, et al
114 - 616
Tot. Ac. 196.0

SE 1/4 pt.
100 Ac.

B & B Oil Co. et al
66 - 42
146 - 398
146 - 575
SW 1/4 pt.
42.5 Ac.

Eleanore Horwell
110 - 99
Lot 3
107.0 Ac.

SEC. 34