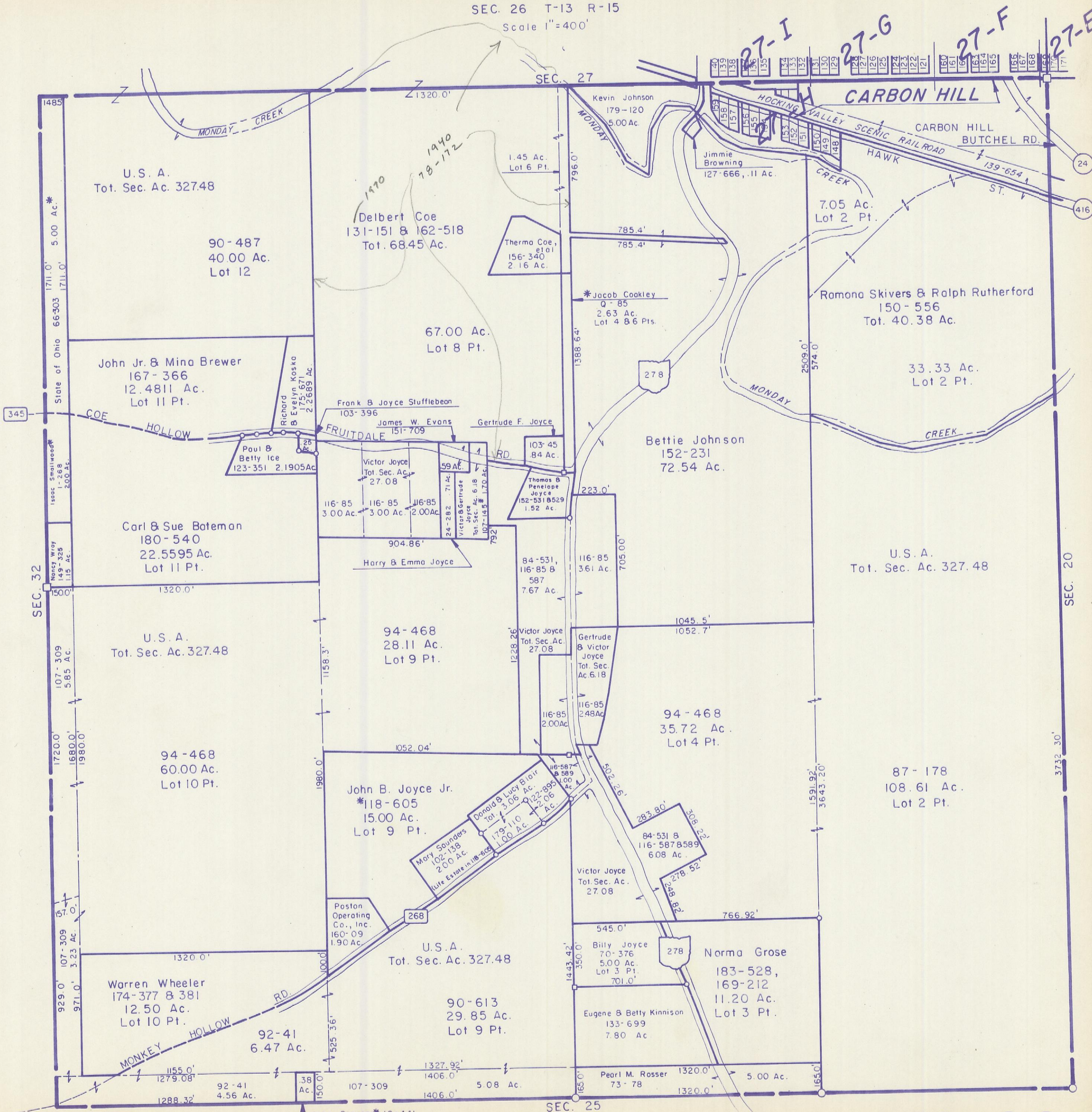


HOCKING COUNTY

WARD TWP.

SEC. 26 T-13 R-15

Scale 1"=400'



U.S. A.
Tot. Sec. Ac. 327.48

90-487
40.00 Ac.
Lot 12

Delbert Coe
131-151 & 162-518
Tot. 68.45 Ac.

67.00 Ac.
Lot 8 Pt.

John Jr. & Mina Brewer
167-366
12.4811 Ac.
Lot 11 Pt.

Carl & Sue Bateman
180-540
22.5595 Ac.
Lot 11 Pt.

U.S. A.
Tot. Sec. Ac. 327.48

94-468
60.00 Ac.
Lot 10 Pt.

Warren Wheeler
174-377 & 381
12.50 Ac.
Lot 10 Pt.

92-41
6.47 Ac.

92-41
4.56 Ac.

John B. Joyce Jr.
*118-605
15.00 Ac.
Lot 9 Pt.

U.S. A.
Tot. Sec. Ac. 327.48

90-613
29.85 Ac.
Lot 9 Pt.

John Blosser* 18-441
Lot 1 Pt.

Kevin Johnson
179-120
5.00 Ac.

1.45 Ac.
Lot 6 Pt.

Therma Coe,
et al
156-340
2.16 Ac.

*Jacob Cookley
Q-85
2.63 Ac.
Lot 4 & 6 Pts.

Bettie Johnson
152-231
72.54 Ac.

Victor Joyce
Tot. Sec. Ac.
27.08

Victor Joyce
Tot. Sec. Ac.
2.00

Victor Joyce
Tot. Sec. Ac.
2.00

Victor Joyce
Tot. Sec. Ac.
2.00

Victor Joyce
Tot. Sec. Ac.
2.00

Victor Joyce
Tot. Sec. Ac.
2.00

Victor Joyce
Tot. Sec. Ac.
2.00

Victor Joyce
Tot. Sec. Ac.
2.00

Victor Joyce
Tot. Sec. Ac.
2.00

Victor Joyce
Tot. Sec. Ac.
2.00

Victor Joyce
Tot. Sec. Ac.
2.00

Victor Joyce
Tot. Sec. Ac.
2.00

Victor Joyce
Tot. Sec. Ac.
2.00

Victor Joyce
Tot. Sec. Ac.
2.00

Victor Joyce
Tot. Sec. Ac.
2.00

Victor Joyce
Tot. Sec. Ac.
2.00

Victor Joyce
Tot. Sec. Ac.
2.00

Victor Joyce
Tot. Sec. Ac.
2.00

7.05 Ac.
Lot 2 Pt.

Ramona Skivers & Ralph Rutherford
150-556
Tot. 40.38 Ac.

33.33 Ac.
Lot 2 Pt.

U.S. A.
Tot. Sec. Ac. 327.48

94-468
35.72 Ac.
Lot 4 Pt.

87-178
108.61 Ac.
Lot 2 Pt.

Billy Joyce
70-376
5.00 Ac.
Lot 3 Pt.

Norma Grose
183-528,
169-212
11.20 Ac.
Lot 3 Pt.

Eugene & Betty Kinnison
133-699
7.80 Ac.

Pearl M. Rosser
73-78

SEC. 26