

HOCKING COUNTY

WARD TWP.

SEC. 27 T13 R15

CARBON HILL

27-A

NORTH
Scale 1"=50'

R. Skivers
& R. Rutherford
150-556

Finley's Add.
Original Town

SEE 27-K

T-582

MINERAL AVENUE

T-589

ST.

HIGH ST.

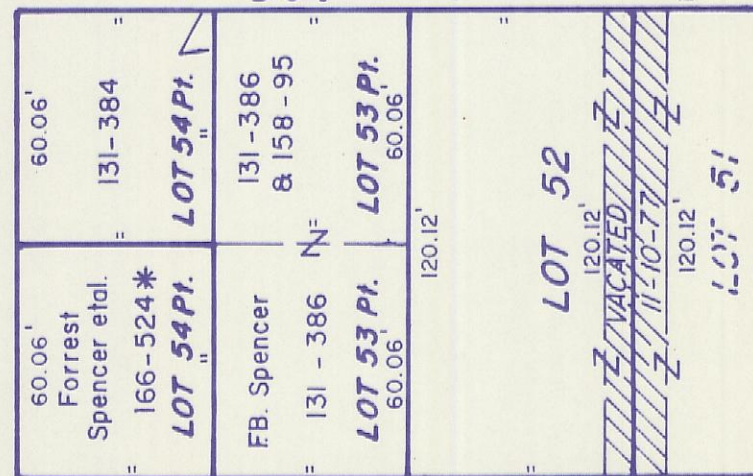
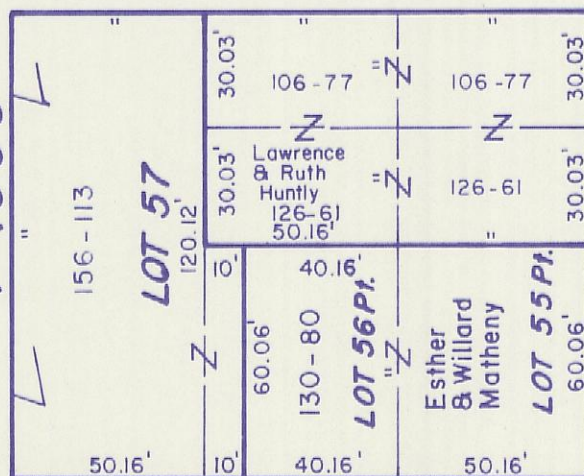
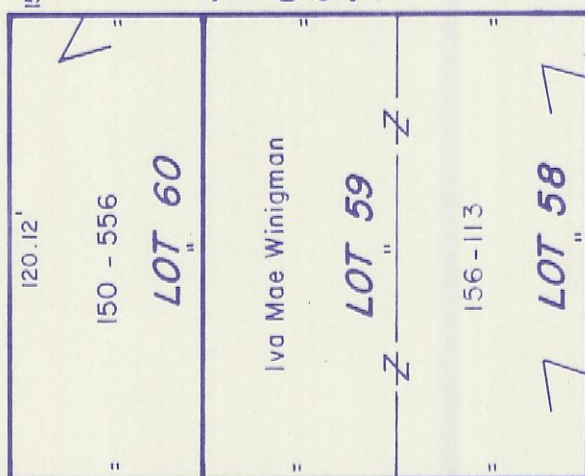
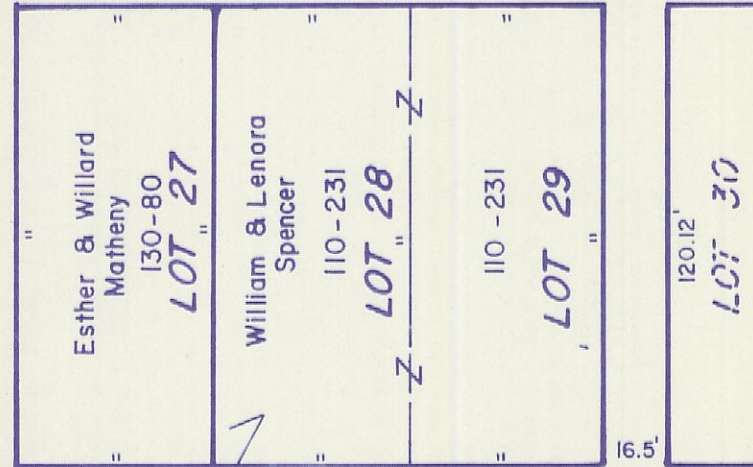
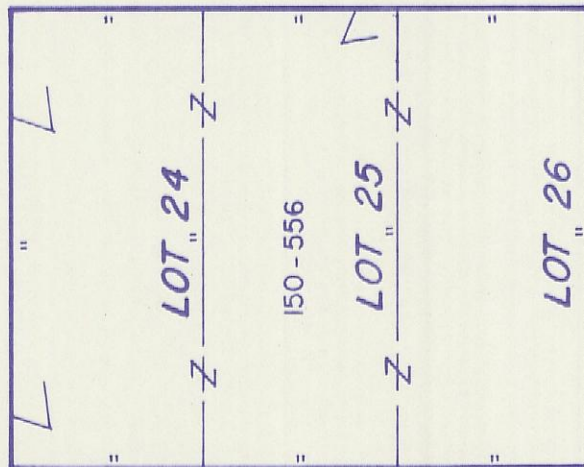
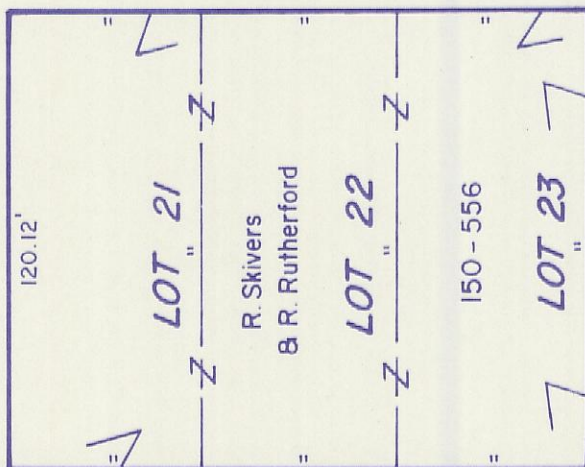
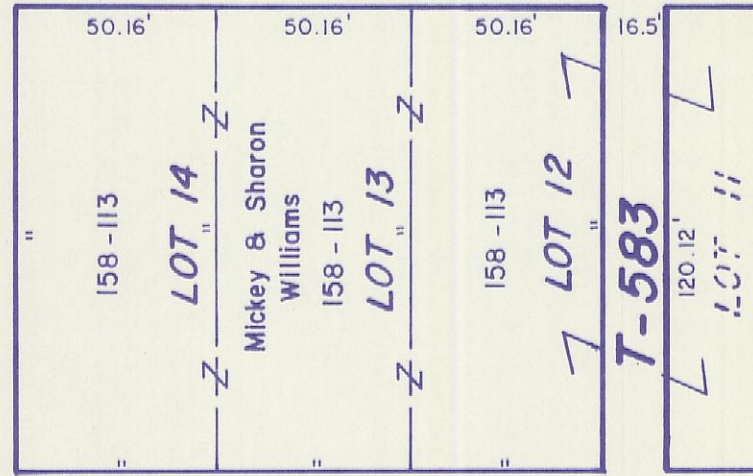
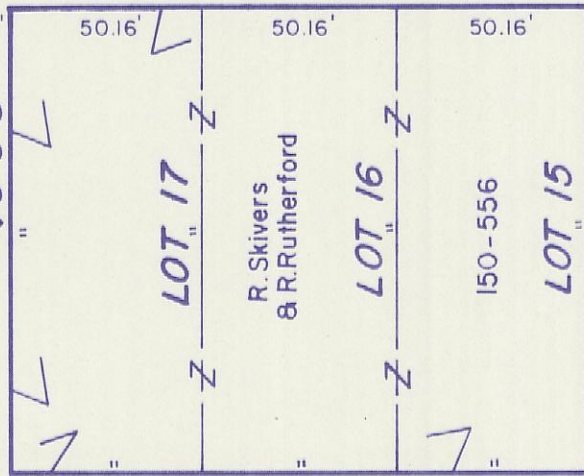
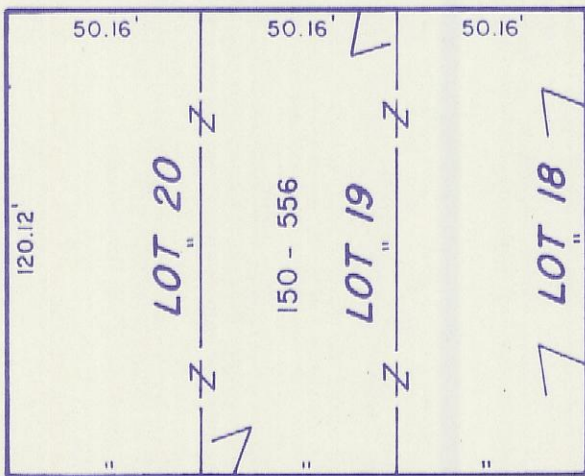
T-590

FIRST

T-1013

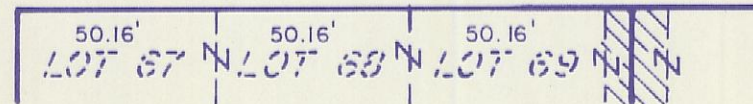
ST.

SECOND



PROSPECT ST.

T-1006



SEE 27-I

SEE 27-B

(Original Town)

CARBON HILL 27-A