

HOCKING COUNTY

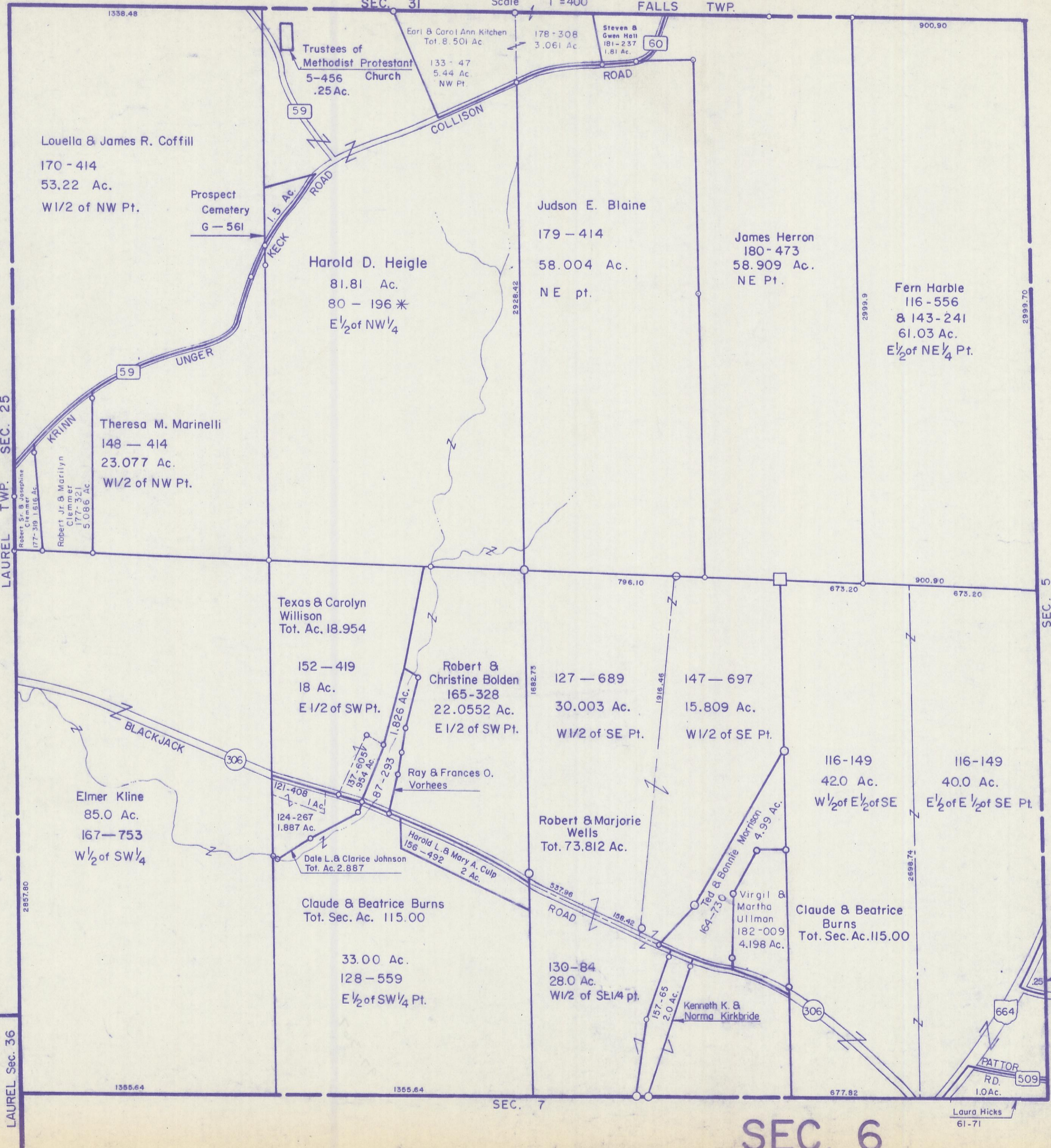
Sec. 6 T13 R17

WASHINGTON TWP.

Scale 1"=400'

FALLS TWP.

SEC. 31



Louella & James R. Coffill  
170 - 414  
53.22 Ac.  
W1/2 of NW Pt.

Harold D. Heigle  
81.81 Ac.  
80 - 196 \*  
E 1/2 of NW 1/4

Judson E. Blaine  
179 - 414  
58.004 Ac.  
NE pt.

James Herron  
180 - 473  
58.909 Ac.  
NE Pt.

Fern Harble  
116 - 556  
& 143 - 241  
61.03 Ac.  
E 1/2 of NE 1/4 Pt.

Theresa M. Marinelli  
148 - 414  
23.077 Ac.  
W1/2 of NW Pt.

Texas & Carolyn Willison  
Tot. Ac. 18.954

152 - 419  
18 Ac.  
E 1/2 of SW Pt.

Robert & Christine Bolden  
165 - 328  
22.0552 Ac.  
E 1/2 of SW Pt.

127 - 689  
30.003 Ac.  
W1/2 of SE Pt.

147 - 697  
15.809 Ac.  
W1/2 of SE Pt.

116 - 149  
42.0 Ac.  
W 1/2 of E 1/2 of SE

116 - 149  
40.0 Ac.  
E 1/2 of E 1/2 of SE Pt.

Elmer Kline  
85.0 Ac.  
167 - 753  
W 1/2 of SW 1/4

Claude & Beatrice Burns  
Tot. Sec. Ac. 115.00

33.00 Ac.  
128 - 559  
E 1/2 of SW 1/4 Pt.

Robert & Marjorie Wells  
Tot. 73.812 Ac.

130 - 84  
28.0 Ac.  
W1/2 of SE 1/4 pt.

Ted & Bonnie Morrison  
4.99 Ac.

Claude & Beatrice Burns  
Tot. Sec. Ac. 115.00

Virgil & Martha Ullman  
182 - 009  
4.198 Ac.

Kenneth K. & Norma Kirkbride

Laura Hicks  
61 - 71

SEC. 6