

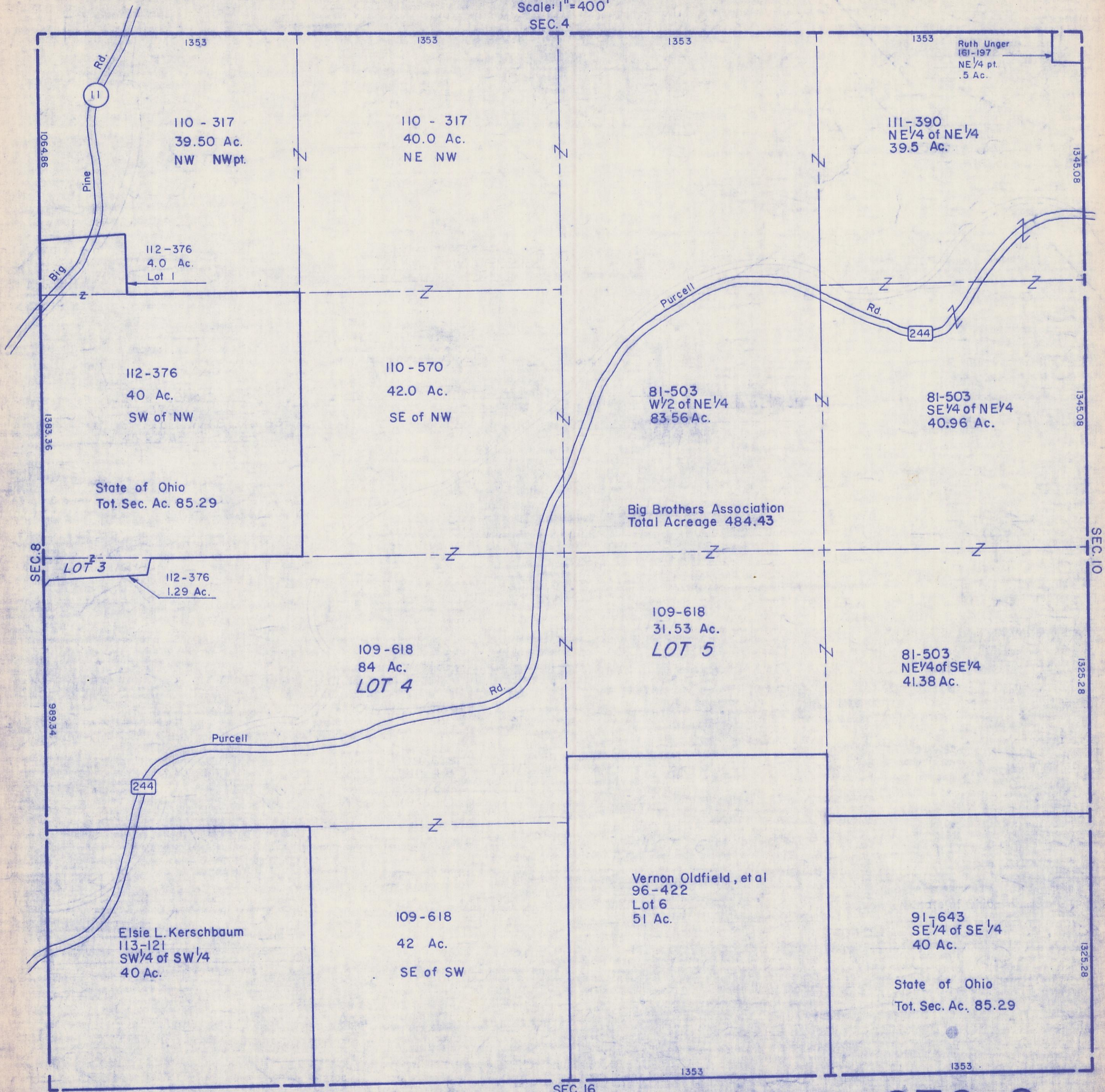
HOCKING COUNTY

Sec. 9 T11 R18

BENTON TWP.

Scale: 1" = 400'

SEC. 4



1353 1353 1353 1353

1064.86 1383.36 989.34

1345.08 1345.08 1325.28 1325.28

1353 1353

110 - 317
39.50 Ac.
NW NWpt.

110 - 317
40.0 Ac.
NE NW

111-390
NE 1/4 of NE 1/4
39.5 Ac.

112-376
4.0 Ac.
Lot 1

112-376
40 Ac.
SW of NW

110 - 570
42.0 Ac.
SE of NW

81-503
W 1/2 of NE 1/4
83.56 Ac.

81-503
SE 1/4 of NE 1/4
40.96 Ac.

State of Ohio
Tot. Sec. Ac. 85.29

Big Brothers Association
Total Acreage 484.43

112-376
1.29 Ac.
LOT 3

109-618
84 Ac.
LOT 4

109-618
31.53 Ac.
LOT 5

81-503
NE 1/4 of SE 1/4
41.38 Ac.

Elsie L. Kerschbaum
113-121
SW 1/4 of SW 1/4
40 Ac.

109-618
42 Ac.
SE of SW

Vernon Oldfield, et al
96-422
Lot 6
51 Ac.

91-643
SE 1/4 of SE 1/4
40 Ac.

State of Ohio
Tot. Sec. Ac. 85.29

Ruth Unger
161-197
NE 1/4 pt.
.5 Ac.

Pine Rd.

Big Rd.

Purcell Rd.

244

244

244

SEC. 8

SEC. 10

SEC. 16

SEC. 9