

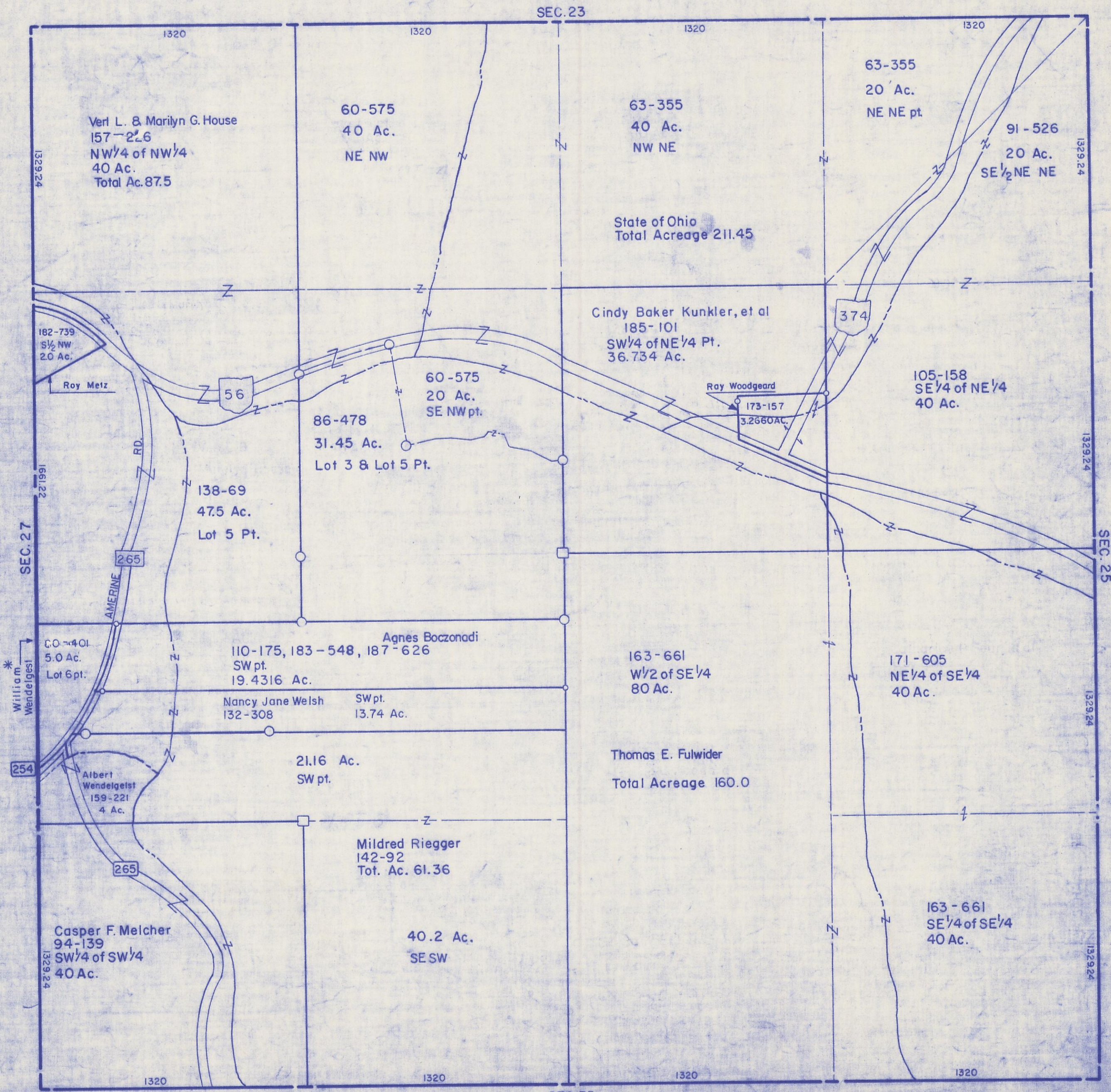
HOCKING COUNTY

Sec. 26 T11 R18

BENTON TWP.

Scale: 1"=400'

Page 28



Verl L. & Marilyn G. House
157-226
NW 1/4 of NW 1/4
40 Ac.
Total Ac. 87.5

60-575
40 Ac.
NE NW

63-355
40 Ac.
NW NE

63-355
20 Ac.
NE NE pt.

91-526
20 Ac.
SE 1/2 NE NE

State of Ohio
Total Acreage 211.45

Cindy Baker Kunkler, et al
185-101
SW 1/4 of NE 1/4 Pt.
36.734 Ac.

182-739
S 1/2 NW
20 Ac.

Roy Metz

60-575
20 Ac.
SE NW pt.

86-478
31.45 Ac.
Lot 3 & Lot 5 Pt.

Ray Woodgeard

173-157
3.2660 Ac.

105-158
SE 1/4 of NE 1/4
40 Ac.

138-69
47.5 Ac.
Lot 5 Pt.

60-401
5.0 Ac.
Lot 6 pt.

William Wendelgest

110-175, 183-548, 187-626
SW pt.
19.4316 Ac.

Agnes Boczonadi

Nancy Jane Welsh
132-308 SW pt.
13.74 Ac.

163-661
W 1/2 of SE 1/4
80 Ac.

171-605
NE 1/4 of SE 1/4
40 Ac.

Albert Wendelgest
159-221
4 Ac.

21.16 Ac.
SW pt.

Thomas E. Fulwider
Total Acreage 160.0

Mildred Riegger
142-92
Tot. Ac. 61.36

Casper F. Melcher
94-139
SW 1/4 of SW 1/4
40 Ac.

40.2 Ac.
SE SW

163-661
SE 1/4 of SE 1/4
40 Ac.

SEC. 26