

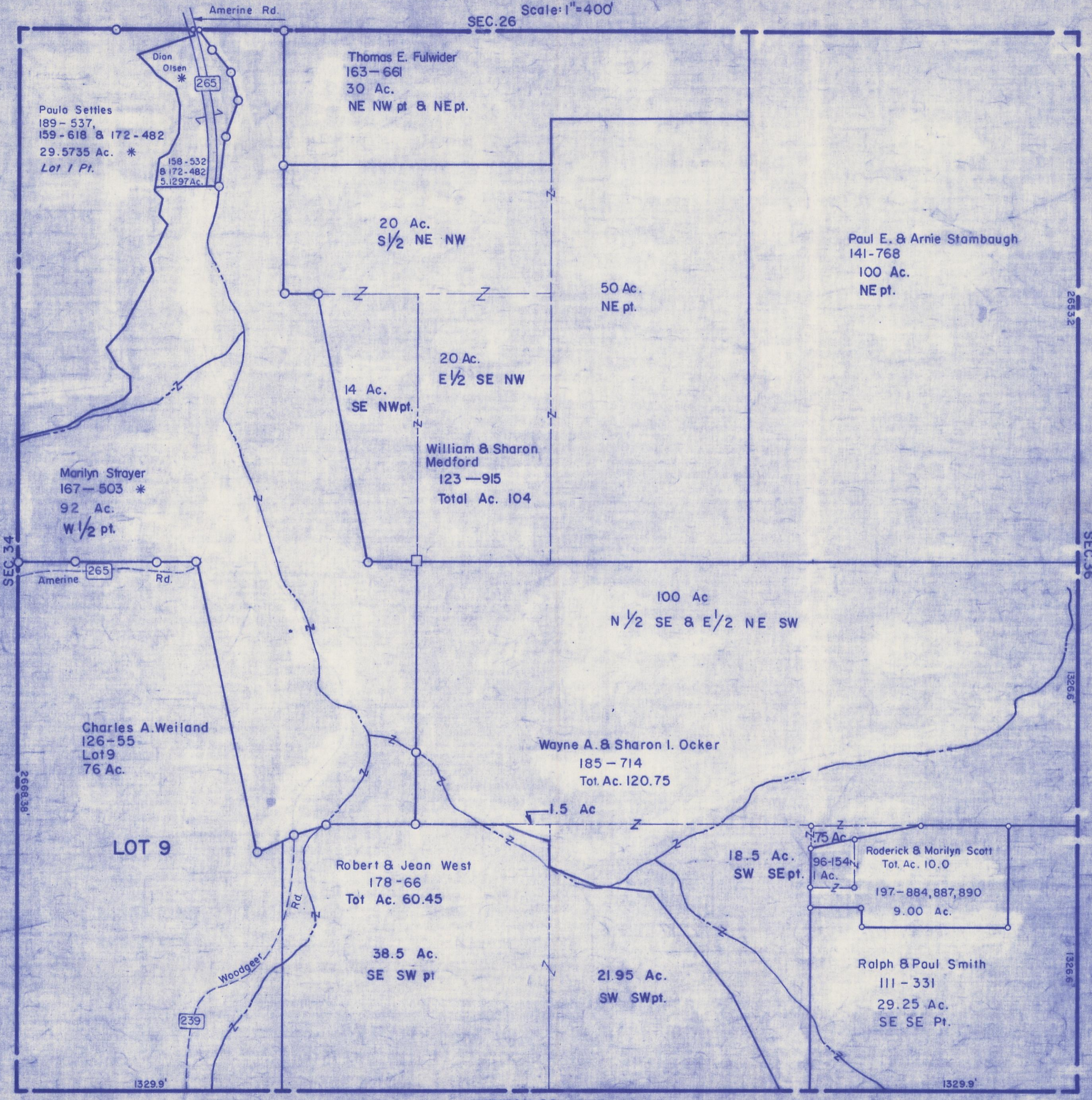
HOCKING COUNTY

Sec. 35 T11 R18

BENTON TWP.

Scale: 1"=400'

SEC. 26



Paulo Settles  
189-537,  
159-618 & 172-482  
29.5735 Ac. \*  
Lot 1 Pt.

158-532  
& 172-482  
5.1297 Ac.

Thomas E. Fulwider  
163-661  
30 Ac.  
NE NW pt & NE pt.

20 Ac.  
S 1/2 NE NW

50 Ac.  
NE pt.

Paul E. & Arnie Stambaugh  
141-768  
100 Ac.  
NE pt.

20 Ac.  
E 1/2 SE NW

14 Ac.  
SE NW pt.

William & Sharon  
Medford  
123-915  
Total Ac. 104

Marilyn Strayer  
167-503 \*  
92 Ac.  
W 1/2 pt.

100 Ac  
N 1/2 SE & E 1/2 NE SW

Charles A. Weiland  
126-55  
Lot 9  
76 Ac.

Wayne A. & Sharon I. Ocker  
185-714  
Tot. Ac. 120.75

LOT 9

Robert & Jean West  
178-66  
Tot. Ac. 60.45

18.5 Ac.  
SW SE pt.

Roderick & Marilyn Scott  
Tot. Ac. 10.0

197-884, 887, 890  
9.00 Ac.

38.5 Ac.  
SE SW pt

21.95 Ac.  
SW SW pt.

Rolph & Paul Smith  
111-331  
29.25 Ac.  
SE SE Pt.

VINTON CO.

SEC. 35